

Converting Colors

Hex(FF4D73)

Have a look what the booklet for
Hex(FF4D73) contains.

Hex(FF4D73)	3
<i>Conversions</i>	4
<i>Details</i>	6
<i>Harmonies</i>	11
<i>Previews</i>	23
<i>Color Blindness Simulation</i>	26
<i>CSS Examples</i>	29

Color

Hex(**FF4D73**)

Conversions

Conversions Part 1

Format	Color
Hex	FF4D73
RGB	255, 77, 115
RGB Percent	100%, 30%, 45%
CMY	0.0000, 0.6980, 0.5490
CMYK	0.00, 0.70, 0.55, 0.00
HSL	347°, 100%, 65%
HSV	347°, 70%, 100%
XYZ	46.9884, 27.8056, 19.1101
YIQ	134.5540, 93.8900, 49.5540

Conversions

Conversions Part 2

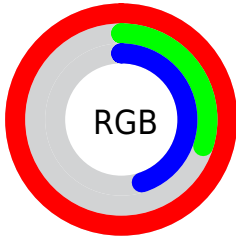
Format	Color
R_{YB}	255, 77, 115
Decimal	16731507
CIE _{Lab}	59.71, 69.01, 18.56
CIE _{LCh}	60, 71.460, 15.055
Yxy	27.8056, 0.5004, 0.2961
Android (android.graphics.Color)	4294921587 (0xFFFF4D73)
YUV	134.5540, -9.6401, 105.6311
Hunter-Lab	52.7310, 66.7815, 15.4245

Details

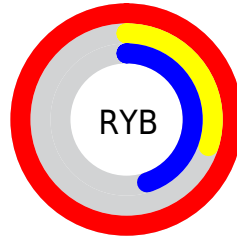
The Hex color **FF4D73** is a dark color, and the websafe version is hex **FF3366**. The color can be described as middle washed rose. A complement of this color would be **4DFFD9**, and the grayscale version is **878787**.

A 20% lighter version of the original color is **FF89A7**, and **C00043** is the 20% darker color. If you saturate the color by 10%, you get **FF345F**, and if you desaturate by 10%, it is **FF6787**.

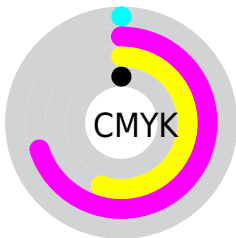
Distribution



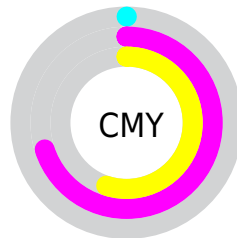
- Red (100%)
- Green (30%)
- Blue (45%)



- Red (100%)
- Yellow (30%)
- Blue (45%)



- Cyan (0%)
- Magenta (70%)
- Yellow (55%)
- Black (0%)



- Cyan (0%)
- Magenta (70%)
- Yellow (55%)

Brightness & Saturation Gradients

These gradients show how the Hex color FF4D73 changes by changing the brightness by 10 percent. The first figure shows a shift by +10% for each color and the second figure -10%.

Similar to the brightness gradients but the following saturation gradients show a change of the Hex color FF4D73 by changing the saturation by 10% instead.

 FF4D73

 FF4D73

FFFFFF

 DF2B5B

 FF89A7

 C00043

 FFA6C2

 A1002E

 FFC3DE

 82001A

 FFE1FA

 640001

 470004

 260001

 000000

 FF4D73

 FF4D73

■ FF345F

■ FF6787

■ FF1A4B

■ FF809B

■ FF0137

■ FF9AAF

■ FF0036

■ FFB3C3

■ FFCDD7

■ FFE6EB

FFFFFF

Harmonies

Analogous

The Analogous color harmony consists of three colors that are next to each other on the color wheel.



F052B2



FF4D73



EE6538

Triad

The Triadic color harmony groups three colors that are evenly spaced from another and form a triangle on the color wheel.



FF4D73



42A42D



00A0FF

Complementary

The Complementary color scheme is a pair of colors which are on the opposite of each other on the color wheel.



FF4D73



4DFFD9

Split Complementary

Split-complementary colors differ from the complementary color scheme. The scheme consists of three colors, the original color and two neighbors of the complement color.



00AAE8



FF4D73



00AA6D

Square

The Square scheme is like the rectangle color scheme, but the four colors are evenly spaced on the color wheel.



FF4D73



8F9700



00ACAF



3B8CFF

Rectangle

The Rectangle color scheme consists of four colors that form a rectangle on the color wheel.



FF4D73



D6780B



00ACAF



00A4FF

Sweetspot

The Sweet Spot groups the original color and five complimentary colors.



FF4D73



FFC9D5



D84DFF



806066



000000



808080

Same Dimension

The Same Dimension uses a secret algorithm to generate beautiful new colors.



FF4D73



FF2957



FF7F4D



807375



BF0029



40000E

Inverse Universe

The Inverse Universe completely reimagines the original color for something new.



FF4D73



FF2957



4DCDFF



807375



BF0029



40000E

Previews

White Background



This preview shows how the Hex color FF4D73 looks on a white background.

Color Contrast Check

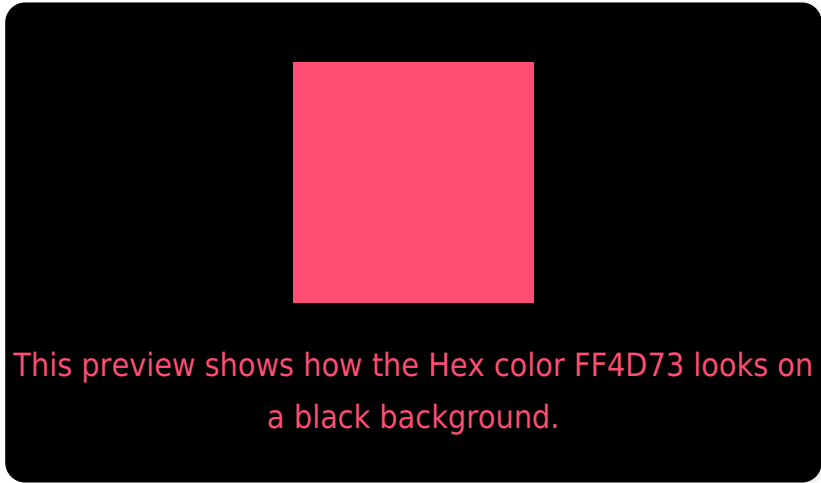
Large Text (above 18pt) WCAG AA ✓ Pass

Any Text WCAG AA × Fail

Large Text (above 18pt) WCAG AAA × Fail

Any Text WCAG AAA × Fail

Black Background



Color Contrast Check

Large Text (above 18pt) WCAG AA ✓ Pass

Any Text WCAG AA ✓ Pass

Large Text (above 18pt) WCAG AAA ✓ Pass

Any Text WCAG AAA × Fail

If you want to check with other color combinations, try the [Color Contrast Checker](#).

Hex FF4D73 Background



This preview shows how black text looks on a background with the Hex color FF4D73.

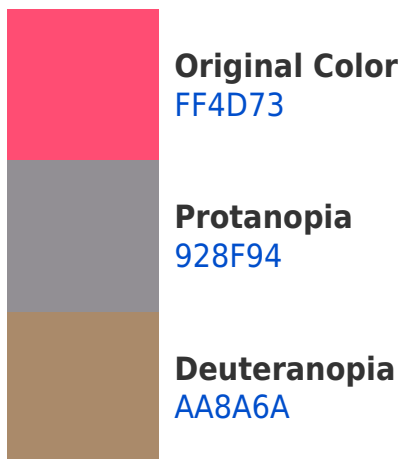


This preview shows how white text looks on a background with the Hex color FF4D73.

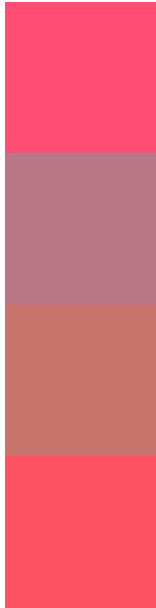
Color Blindness Simulation

Color vision deficiency is a very complex topic, and I could not describe the different causes any better than Wikipedia does, so if you want to learn more, you should check out their [article about color blindness](#).

Dichromacy



Trichromacy



Original Color
FF4D73

Protanomaly
BA7788

Deuteranomaly
C9746D

Tritanomaly
FE5161

Monochromacy



Original Color
FF4D73

Achromatopsia
878787

Achromatomaly
B37280

CSS Examples

Text

The CSS property to change the color of the text to Hex FF4D73 is called "color". The color property can be set on classes, ids or directly on the HTML element.

This example shows how text in the color #FF4D73 looks like.

```
.text, #text, p{  
  color:#FF4D73  
}
```

If you want to add a text shadow in that color use the text-shadow property, you can generate a text shadow directly with our [CSS Text Shadow Generator](#).

Here you see how black text with a 4 pixel #FF4D73 colored shadow looks like.

```
.shadow{ text-shadow: 4px 4px 2px #FF4D73
}
```

Border

The CSS property to change the border of an element to Hex FF4D73 is called "border". The border property can be set on classes, ids or directly on the HTML element.

This example shows the color as border, it can be applied via the CSS property "border" or "border-color".

```
.border, #border, table{ border:4px solid
#FF4D73 }
```

If only the border color should be changed use the property `border-color`.

```
.border{ border-color:#FF4D73 }
```

If you want to add a box shadow in that color use:

Here you see how a box with a 4 pixel #FF4D73 colored shadow looks like.

```
.boxshadow{ -moz-box-shadow:4px 4px 4px  
4px #FF4D73; -webkit-box-shadow:4px 4px  
4px 4px #FF4D73; box-shadow:4px 4px 4px  
4px #FF4D73 }
```

Background

The CSS property to change the background color of an element to Hex FF4D73 is called "background". The background property can be set on classes, ids or directly on the HTML element.

```
.background, #background, body{  
background:#FF4D73 }
```

If only the background color should be changed can be used:

```
.background{ background-color:#FF4D73 }
```

This example shows the color as background, it is applied via the CSS property "background".

To optimize and compress your CSS code, you can use our [online CSS compressor and optimizer](#) based on csstidy. If you want to create a linear or radial gradient as background or border, check our [CSS Gradient Generator](#).

Hey! You found this booklet interesting? Support Converting Colors with the new Membership Option!

The pro membership hides all ads, plus gives you double the colors in the color bucket, and more awesome pro features!

[Learn more, Memberships starting at \\$2.50/m!](#)

**Follow me
on Twitter!**

@ConvertingColor