

# Converting Colors

Hex(FF4D7E)

Have a look what the booklet for  
Hex(FF4D7E) contains.

<b>Hex(FF4D7E)</b> .....	3
<i><b>Conversions</b></i> .....	4
<i><b>Details</b></i> .....	6
<i><b>Harmonies</b></i> .....	11
<i><b>Previews</b></i> .....	23
<i><b>Color Blindness Simulation</b></i> .....	26
<i><b>CSS Examples</b></i> .....	29

**Color**

**Hex(F4D7E)**

# Conversions

## Conversions Part 1

Format	Color
Hex	FF4D7E
RGB	255, 77, 126
RGB Percent	100%, 30%, 49%
CMY	0.0000, 0.6980, 0.5059
CMYK	0.00, 0.70, 0.51, 0.00
HSL	343°, 100%, 65%
HSV	343°, 70%, 100%
XYZ	47.6598, 28.0741, 22.6456
YIQ	135.8080, 90.3590, 52.9750

# Conversions

## Conversions Part 2

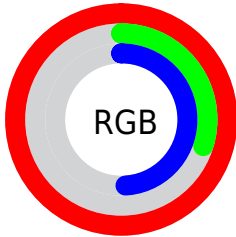
<b>Format</b>	<b>Color</b>
<b>RYB</b>	255, 77, 126
Decimal	16731518
CIELab	59.96, 69.83, 12.46
CIElCh	60, 70.937, 10.118
Yxy	28.0741, 0.4844, 0.2854
Android (android.graphics.Color)	4294921598 (0xFFFF4D7E)
YUV	135.8080, -4.8353, 104.5314
Hunter-Lab	52.9850, 67.8362, 11.7492

# Details

The Hex color **FF4D7E** is a dark color, and the websafe version is hex **FF3366**. The color can be described as middle washed rose. A complement of this color would be **4DFFCE**, and the grayscale version is **888888**.

A 20% lighter version of the original color is **FF89B2**, and **C0004D** is the 20% darker color. If you saturate the color by 10%, you get **FF346C**, and if you desaturate by 10%, it is **FF6790**.

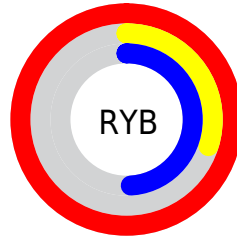
# Distribution



Red (100%)

Green (30%)

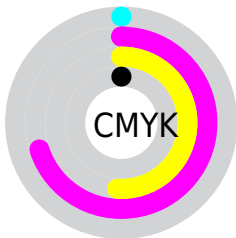
Blue (49%)



Red (100%)

Yellow (30%)

Blue (49%)

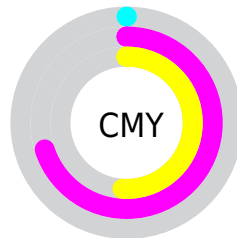


Cyan (0%)

Magenta (70%)

Yellow (51%)

Black (0%)



Cyan (0%)

Magenta (70%)

Yellow (51%)

# Brightness & Saturation Gradients

These gradients show how the Hex color FF4D7E changes by changing the brightness by 10 percent. The first figure shows a shift by +10% for each color and the second figure -10%.

Similar to the brightness gradients but the following saturation gradients show a change of the Hex color FF4D7E by changing the saturation by 10% instead.



 FF4D7E

 FF4D7E

FFFFFF

 DF2A65

 FF89B2

 C0004D

 FFA6CE

 A10037

 FFC4EA

 830022

 FFE1FF

 65000C

 480004

 280001

 000000

 FF4D7E

 FF4D7E

 FF346C

 FF6790

 FF1A59

 FF80A3

 FF0147

 FF9AB5

 FF0046

 FFB3C8

 FFCDDA

 FFE6ED

FFFFFF

# Harmonies

## Analogous

The Analogous color harmony consists of three colors that are next to each other on the color wheel.



EA58BC



FF4D7E



F36143

# Triad

The Triadic color harmony groups three colors that are evenly spaced from another and form a triangle on the color wheel.



FF4D7E



54A323



00A3FF

# Complementary

The Complementary color scheme is a pair of colors which are on the opposite of each other on the color wheel.



FF4D7E



4DFFCE

# Split Complementary

Split-complementary colors differ from the complementary color scheme. The scheme consists of three colors, the original color and two neighbors of the complement color.



00ABE0



FF4D7E



00AA63

# Square

The Square scheme is like the rectangle color scheme, but the four colors are evenly spaced on the color wheel.



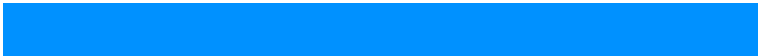
FF4D7E



9A9400



00ADA5



0091FF

# Rectangle

The Rectangle color scheme consists of four colors that form a rectangle on the color wheel.



FF4D7E



DD751B



00ADA5



00A6FD



# Sweetspot

The Sweet Spot groups the original color and five complimentary colors.



FF4D7E



FFC9D8



CD4DFF



806068



000000



808080



# Same Dimension

The Same Dimension uses a secret algorithm to generate beautiful new colors.



FF4D7E



FF2964



FF744D



807376



BF0035



400012



# Inverse Universe

The Inverse Universe completely reimagines the original color for something new.



FF4D7E



FF2964



4DD8FF



807376



BF0035



400012



# Previews

## White Background



This preview shows how the Hex color FF4D7E looks on a white background.

## Color Contrast Check

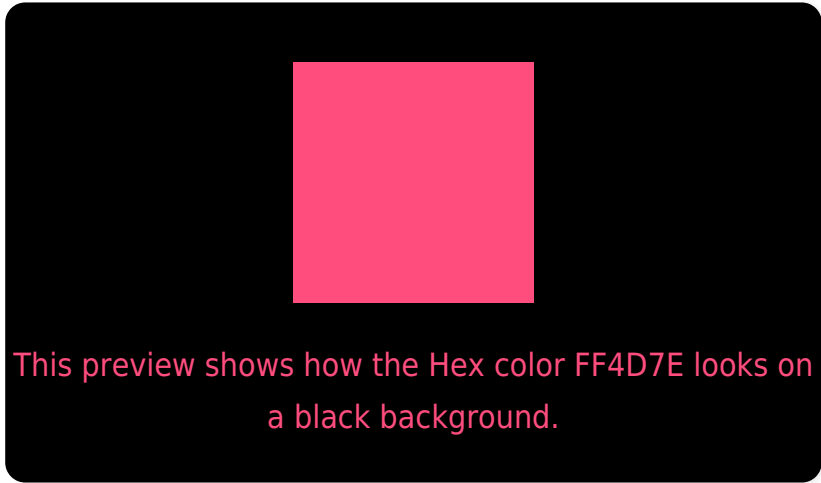
Large Text (above 18pt) WCAG AA ✓ Pass

Any Text WCAG AA ✗ Fail

Large Text (above 18pt) WCAG AAA ✗ Fail

Any Text WCAG AAA ✗ Fail

# Black Background



## Color Contrast Check

Large Text (above 18pt) WCAG AA ✓ Pass

Any Text WCAG AA ✓ Pass

Large Text (above 18pt) WCAG AAA ✓ Pass

Any Text WCAG AAA × Fail

If you want to check with other color combinations, try the [Color Contrast Checker](#).



## Hex FF4D7E Background



This preview shows how black text looks on a background with the Hex color FF4D7E.



This preview shows how white text looks on a background with the Hex color FF4D7E.

# Color Blindness Simulation

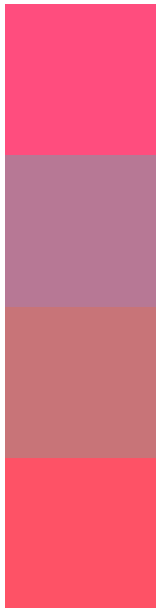
Color vision deficiency is a very complex topic, and I could not describe the different causes any better than Wikipedia does, so if you want to learn more, you should check out their [article about color blindness](#).

## Dichromacy





# Trichromacy



**Original Color**  
FF4D7E

**Protanomaly**  
B77895

**Deuteranomaly**  
C87478

**Tritanomaly**  
FE5266

# Monochromacy



**Original Color**  
FF4D7E

**Achromatopsia**  
888888

**Achromatomaly**  
B37384

# CSS Examples

## Text

The CSS property to change the color of the text to Hex FF4D7E is called "color". The color property can be set on classes, ids or directly on the HTML element.

This example shows how text in the color #FF4D7E looks like.

```
.text, #text, p{  
  color:#FF4D7E  
}
```

If you want to add a text shadow in that color use the text-shadow property, you can generate a text shadow directly with our [CSS Text Shadow Generator](#).

Here you see how black text with a 4 pixel #FF4D7E colored shadow looks like.

```
.shadow{ text-shadow: 4px 4px 2px #FF4D7E
}
```

## Border

The CSS property to change the border of an element to Hex FF4D7E is called "border". The border property can be set on classes, ids or directly on the HTML element.

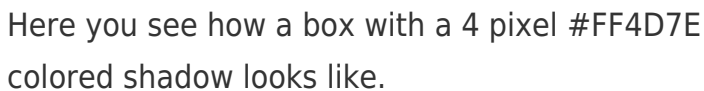
This example shows the color as border, it can be applied via the CSS property "border" or "border-color".

```
.border, #border, table{ border:4px solid
#FF4D7E }
```

If only the border color should be changed use the property `border-color`.

```
.border{ border-color:#FF4D7E }
```

If you want to add a box shadow in that color use:



Here you see how a box with a 4 pixel #FF4D7E colored shadow looks like.

```
.boxshadow{ -moz-box-shadow:4px 4px 4px  
4px #FF4D7E; -webkit-box-shadow:4px 4px  
4px 4px #FF4D7E; box-shadow:4px 4px 4px  
4px #FF4D7E }
```

# Background

The CSS property to change the background color of an element to Hex FF4D7E is called "background". The background property can be set on classes, ids or directly on the HTML element.

```
.background, #background, body{  
background:#FF4D7E }
```

If only the background color should be changed can be used:

```
.background{ background-color:#FF4D7E }
```

This example shows the color as background, it is applied via the CSS property "background".

To optimize and compress your CSS code, you can use our [online CSS compressor and optimizer](#) based on csstidy. If you want to create a linear or radial gradient as background or border, check our [CSS Gradient Generator](#).



Hey! You found this booklet interesting? Support Converting Colors with the new Membership Option!

The pro membership hides all ads, plus gives you double the colors in the color bucket, and more awesome pro features!

**[Learn more, Memberships starting at \\$2.50/m!](#)**

**Follow me  
on Twitter!**

@ConvertingColor