

Converting Colors

Hex(FF4E81)

Have a look what the booklet for
Hex(FF4E81) contains.

Hex(FF4E81)	3
<i>Conversions</i>	4
<i>Details</i>	6
<i>Harmonies</i>	11
<i>Previews</i>	23
<i>Color Blindness Simulation</i>	26
<i>CSS Examples</i>	29

Color

Hex(F4E81)

Conversions

Conversions Part 1

Format	Color
Hex	FF4E81
RGB	255, 78, 129
RGB Percent	100%, 31%, 51%
CMY	0.0000, 0.6941, 0.4941
CMYK	0.00, 0.69, 0.49, 0.00
HSL	343°, 100%, 65%
HSV	343°, 69%, 100%
XYZ	47.9268, 28.2938, 23.7041
YIQ	136.7370, 89.1210, 53.3850

Conversions

Conversions Part 2

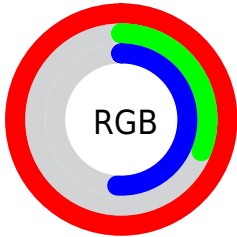
Format	Color
R _Y B	255, 78, 129
Decimal	16731777
CIE Lab	60.15, 69.72, 10.98
CIE LCh	60, 70.583, 8.953
Yxy	28.2938, 0.4796, 0.2832
Android (android.graphics.Color)	4294921857 (0xFFFF4E81)
YUV	136.7370, -3.8143, 103.7167
Hunter-Lab	53.1919, 67.7459, 10.8127

Details

The Hex color **FF4E81** is a light color, and the websafe version is hex **FF6699**. The color can be described as light washed rose. A complement of this color would be **4EFFCC**, and the grayscale version is **898989**.

A 20% lighter version of the original color is **FF8AB6**, and **C00050** is the 20% darker color. If you saturate the color by 10%, you get **FF356F**, and if you desaturate by 10%, it is **FF6893**.

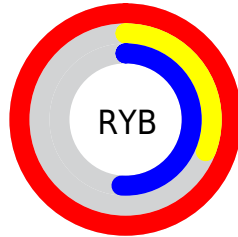
Distribution



Red (100%)

Green (31%)

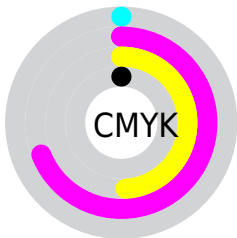
Blue (51%)



Red (100%)

Yellow (31%)

Blue (51%)

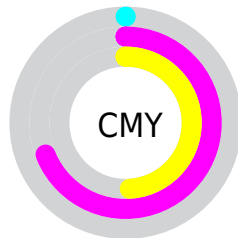


Cyan (0%)

Magenta (69%)

Yellow (49%)

Black (0%)



Cyan (0%)

Magenta (69%)

Yellow (49%)

Brightness & Saturation Gradients

These gradients show how the Hex color FF4E81 changes by changing the brightness by 10 percent. The first figure shows a shift by +10% for each color and the second figure -10%.

Similar to the brightness gradients but the following saturation gradients show a change of the Hex color FF4E81 by changing the saturation by 10% instead.

 FF4E81

 FF4E81

FFFFFF

 E02C68

 FF8AB6

 C00050

 FFA7D1

 A2003A

 FFC4ED

 830025

 FFE2FF

 650010

 490004

 280001

 000000

 FF4E81

 FF4E81

■ FF356F

■ FF6893

■ FF1B5D

■ FF81A5

■ FF024B

■ FF9BB7

■ FF0049

■ FFB4CA

■ FFCEDC

■ FFE7EE

FFFFFF

Harmonies

Analogous

The Analogous color harmony consists of three colors that are next to each other on the color wheel.



E95ABF



FF4E81



F46146

Triad

The Triadic color harmony groups three colors that are evenly spaced from another and form a triangle on the color wheel.



FF4E81



58A322



00A4FF

Complementary

The Complementary color scheme is a pair of colors which are on the opposite of each other on the color wheel.



FF4E81



4EFFCC

Split Complementary

Split-complementary colors differ from the complementary color scheme. The scheme consists of three colors, the original color and two neighbors of the complement color.



00ACDE



FF4E81



00AA62

Square

The Square scheme is like the rectangle color scheme, but the four colors are evenly spaced on the color wheel.



FF4E81



9D9400



00ADA3



0092FF

Rectangle

The Rectangle color scheme consists of four colors that form a rectangle on the color wheel.



FF4E81



DF741F



00ADA3



00A7FB

Sweetspot

The Sweet Spot groups the original color and five complimentary colors.



FF4E81



FFC9D9



CA4EFF



806069



000000



808080

Same Dimension

The Same Dimension uses a secret algorithm to generate beautiful new colors.



FF4E81



FF2B68



FF714E



807376



BF0037



400012

Inverse Universe

The Inverse Universe completely reimagines the original color for something new.



FF4E81



FF2B68



4EDCFF



807376



BF0037



400012

Previews

White Background



This preview shows how the Hex color FF4E81 looks on a white background.

Color Contrast Check

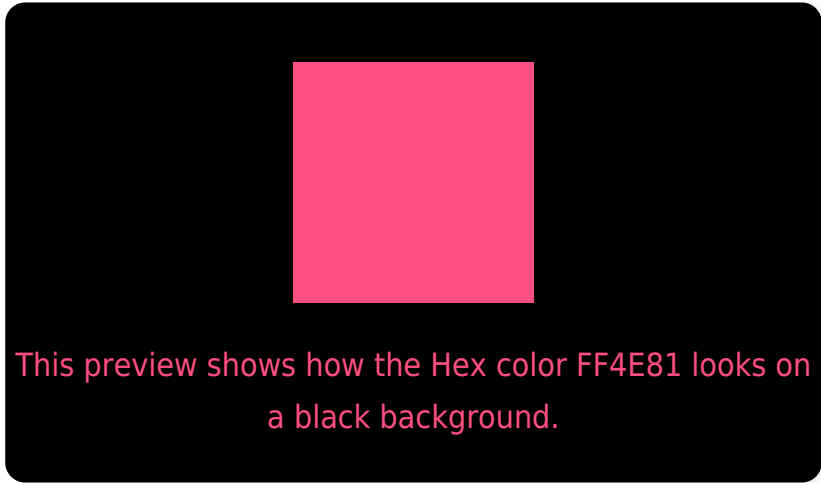
Large Text (above 18pt) WCAG AA ✓ Pass

Any Text WCAG AA × Fail

Large Text (above 18pt) WCAG AAA × Fail

Any Text WCAG AAA × Fail

Black Background



Color Contrast Check

Large Text (above 18pt) WCAG AA ✓ Pass

Any Text WCAG AA ✓ Pass

Large Text (above 18pt) WCAG AAA ✓ Pass

Any Text WCAG AAA × Fail

If you want to check with other color combinations, try the [Color Contrast Checker](#).

Hex FF4E81 Background



This preview shows how black text looks on a background with the Hex color FF4E81.

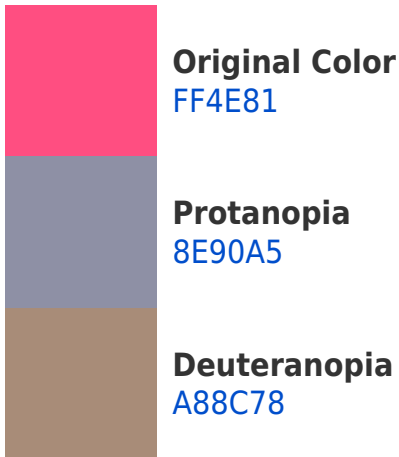


This preview shows how white text looks on a background with the Hex color FF4E81.

Color Blindness Simulation

Color vision deficiency is a very complex topic, and I could not describe the different causes any better than Wikipedia does, so if you want to learn more, you should check out their [article about color blindness](#).

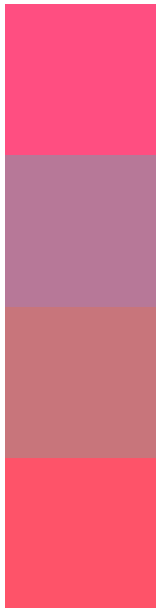
Dichromacy





Tritanopia
FD565B

Trichromacy



Original Color
FF4E81

Protanomaly
B77898

Deuteranomaly
C8757B

Tritanomaly
FE5369

Monochromacy



Original Color
FF4E81

Achromatopsia
898989

Achromatomaly
B47486

CSS Examples

Text

The CSS property to change the color of the text to Hex FF4E81 is called "color". The color property can be set on classes, ids or directly on the HTML element.

This example shows how text in the color #FF4E81 looks like.

```
.text, #text, p{  
    color:#FF4E81  
}
```

If you want to add a text shadow in that color use the text-shadow property, you can generate a text shadow directly with our [CSS Text Shadow Generator](#).

Here you see how black text with a 4 pixel #FF4E81 colored shadow looks like.

```
.shadow{ text-shadow: 4px 4px 2px #FF4E81
}
```

Border

The CSS property to change the border of an element to Hex FF4E81 is called "border". The border property can be set on classes, ids or directly on the HTML element.

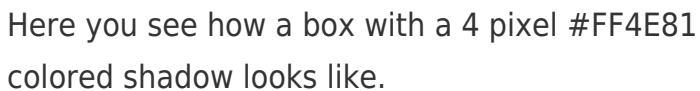
This example shows the color as border, it can be applied via the CSS property "border" or "border-color".

```
.border, #border, table{ border:4px solid
#FF4E81 }
```

If only the border color should be changed use the property `border-color`.

```
.border{ border-color:#FF4E81 }
```

If you want to add a box shadow in that color use:



Here you see how a box with a 4 pixel #FF4E81 colored shadow looks like.

```
.boxshadow{ -moz-box-shadow:4px 4px 4px  
4px #FF4E81; -webkit-box-shadow:4px 4px  
4px 4px #FF4E81; box-shadow:4px 4px 4px  
4px #FF4E81 }
```

Background

The CSS property to change the background color of an element to Hex FF4E81 is called "background". The background property can be set on classes, ids or directly on the HTML element.

```
.background, #background, body{  
background:#FF4E81 }
```

If only the background color should be changed can be used:

```
.background{ background-color:#FF4E81 }
```

This example shows the color as background, it is applied via the CSS property "background".

To optimize and compress your CSS code, you can use our [online CSS compressor and optimizer](#) based on csstidy. If you want to create a linear or radial gradient as background or border, check our [CSS Gradient Generator](#).

Hey! You found this booklet interesting? Support Converting Colors with the new Membership Option!

The pro membership hides all ads, plus gives you double the colors in the color bucket, and more awesome pro features!

[Learn more, Memberships starting at \\$2.50/m!](#)

**Follow me
on Twitter!**

@ConvertingColor