

# Converting Colors

Hex(FF4F7D)

Have a look what the booklet for  
Hex(FF4F7D) contains.

<b>Hex(FF4F7D)</b> .....	3
<i><b>Conversions</b></i> .....	4
<i><b>Details</b></i> .....	6
<i><b>Harmonies</b></i> .....	11
<i><b>Previews</b></i> .....	23
<i><b>Color Blindness Simulation</b></i> .....	26
<i><b>CSS Examples</b></i> .....	29

# Color

**Hex(F4F7D)**

# Conversions

## Conversions Part 1

<b>Format</b>	<b>Color</b>
Hex	FF4F7D
RGB	255, 79, 125
RGB Percent	100%, 31%, 49%
CMY	0.0000, 0.6902, 0.5098
CMYK	0.00, 0.69, 0.51, 0.00
HSL	344°, 100%, 65%
HSV	344°, 69%, 100%
XYZ	47.7377, 28.3326, 22.3547
YIQ	136.8680, 90.1300, 51.6180

# Conversions

## Conversions Part 2

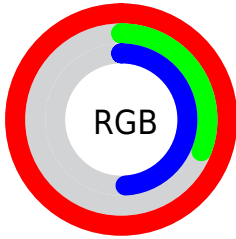
<b>Format</b>	<b>Color</b>
<b>R<sub>YB</sub></b>	255, 79, 125
Decimal	16732029
CIE Lab	60.19, 69.05, 13.37
CIE LCh	60, 70.332, 10.960
Yxy	28.3326, 0.4850, 0.2879
Android (android.graphics.Color)	4294922109 (0xFFFF4F7D)
YUV	136.8680, -5.8509, 103.6018
Hunter-Lab	53.2284, 66.9372, 12.3594

# Details

The Hex color **FF4F7D** is a dark color, and the websafe version is hex **FF3366**. The color can be described as middle washed rose. A complement of this color would be **4FFFD1**, and the grayscale version is **898989**.

A 20% lighter version of the original color is **FF8AB1**, and **C0004D** is the 20% darker color. If you saturate the color by 10%, you get **FF366A**, and if you desaturate by 10%, it is **FF6990**.

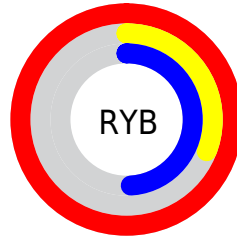
# Distribution



Red (100%)

Green (31%)

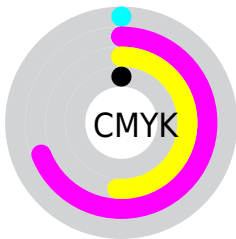
Blue (49%)



Red (100%)

Yellow (31%)

Blue (49%)

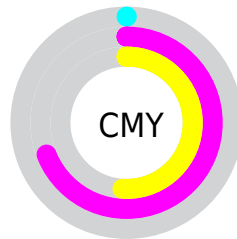


Cyan (0%)

Magenta (69%)

Yellow (51%)

Black (0%)



Cyan (0%)

Magenta (69%)

Yellow (51%)

# Brightness & Saturation Gradients

These gradients show how the Hex color FF4F7D changes by changing the brightness by 10 percent. The first figure shows a shift by +10% for each color and the second figure -10%.

Similar to the brightness gradients but the following saturation gradients show a change of the Hex color FF4F7D by changing the saturation by 10% instead.



 FF4F7D

 FF4F7D

FFFFFF

 DF2D64

 FF8AB1

 C0004D

 FFA8CD

 A10036

 FFC5E9

 830021

 FFE3FF

 65000B

 480004

 280001

 000000

 FF4F7D

 FF4F7D

 FF366A

 FF6990

 FF1C57

 FF82A3

 FF0344

 FF9CB6

 FF0043

 FFB5C8

 FFCFDB

 FFE8EE

FFFFFF

# Harmonies

## Analogous

The Analogous color harmony consists of three colors that are next to each other on the color wheel.



EB58BB



FF4F7D



F26342

# Triad

The Triadic color harmony groups three colors that are evenly spaced from another and form a triangle on the color wheel.



FF4F7D



53A327



00A3FF

# Complementary

The Complementary color scheme is a pair of colors which are on the opposite of each other on the color wheel.



FF4F7D



4FFFD1

# Split Complementary

Split-complementary colors differ from the complementary color scheme. The scheme consists of three colors, the original color and two neighbors of the complement color.



00ABE1



FF4F7D



00AB66

# Square

The Square scheme is like the rectangle color scheme, but the four colors are evenly spaced on the color wheel.



FF4F7D



999500



00ADA7



0691FF

# Rectangle

The Rectangle color scheme consists of four colors that form a rectangle on the color wheel.



FF4F7D



DC761C



00ADA7



00A7FD



# Sweetspot

The Sweet Spot groups the original color and five complimentary colors.



FF4F7D



FFC9D7



D04FFF



806068



000000



808080



# Same Dimension

The Same Dimension uses a secret algorithm to generate beautiful new colors.



FF4F7D



FF2B63



FF784F



807376



BF0032



400011



# Inverse Universe

The Inverse Universe completely reimagines the original color for something new.



FF4F7D



FF2B63



4FD6FF



807376



BF0032



400011



# Previews

## White Background



This preview shows how the Hex color FF4F7D looks on a white background.

## Color Contrast Check

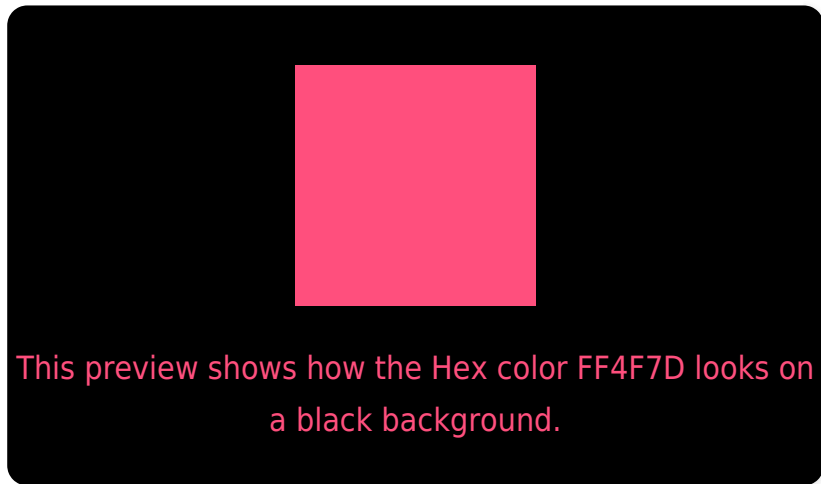
Large Text (above 18pt) WCAG AA ✓ Pass

Any Text WCAG AA × Fail

Large Text (above 18pt) WCAG AAA × Fail

Any Text WCAG AAA × Fail

# Black Background



## Color Contrast Check

Large Text (above 18pt) WCAG AA ✓ Pass

Any Text WCAG AA ✓ Pass

Large Text (above 18pt) WCAG AAA ✓ Pass

Any Text WCAG AAA × Fail

If you want to check with other color combinations, try the [Color Contrast Checker](#).



## Hex FF4F7D Background



This preview shows how black text looks on a background with the Hex color FF4F7D.



This preview shows how white text looks on a background with the Hex color FF4F7D.

# Color Blindness Simulation

Color vision deficiency is a very complex topic, and I could not describe the different causes any better than Wikipedia does, so if you want to learn more, you should check out their [article about color blindness](#).

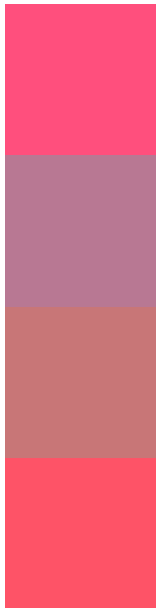
## Dichromacy





**Tritanopia**  
FD565B

# Trichromacy



**Original Color**  
FF4F7D

**Protanomaly**  
B87893

**Deuteranomaly**  
C87677

**Tritanomaly**  
FE5367

# Monochromacy



**Original Color**  
FF4F7D

**Achromatopsia**  
898989

**Achromatomaly**  
B47485

# CSS Examples

## Text

The CSS property to change the color of the text to Hex FF4F7D is called "color". The color property can be set on classes, ids or directly on the HTML element.

This example shows how text in the color #FF4F7D looks like.

```
.text, #text, p{  
    color:#FF4F7D  
}
```

If you want to add a text shadow in that color use the text-shadow property, you can generate a text shadow directly with our [CSS Text Shadow Generator](#).

Here you see how black text with a 4 pixel #FF4F7D colored shadow looks like.

```
.shadow{ text-shadow: 4px 4px 2px #FF4F7D
}
```

## Border

The CSS property to change the border of an element to Hex FF4F7D is called "border". The border property can be set on classes, ids or directly on the HTML element.

This example shows the color as border, it can be applied via the CSS property "border" or "border-color".

```
.border, #border, table{ border:4px solid
#FF4F7D }
```

If only the border color should be changed use the property `border-color`.

```
.border{ border-color:#FF4F7D }
```

If you want to add a box shadow in that color use:

Here you see how a box with a 4 pixel #FF4F7D colored shadow looks like.

```
.boxshadow{ -moz-box-shadow:4px 4px 4px  
4px #FF4F7D; -webkit-box-shadow:4px 4px  
4px 4px #FF4F7D; box-shadow:4px 4px 4px  
4px #FF4F7D }
```

# Background

The CSS property to change the background color of an element to Hex FF4F7D is called "background". The background property can be set on classes, ids or directly on the HTML element.

```
.background, #background, body{  
background:#FF4F7D }
```

If only the background color should be changed can be used:

```
.background{ background-color:#FF4F7D }
```

This example shows the color as background, it is applied via the CSS property "background".

To optimize and compress your CSS code, you can use our [online CSS compressor and optimizer](#) based on csstidy. If you want to create a linear or radial gradient as background or border, check our [CSS Gradient Generator](#).



Hey! You found this booklet interesting? Support Converting Colors with the new Membership Option!

The pro membership hides all ads, plus gives you double the colors in the color bucket, and more awesome pro features!

**[Learn more, Memberships starting at \\$2.50/m!](#)**

**Follow me  
on Twitter!**

@ConvertingColor