

# Converting Colors

Hex(FF5372)

Have a look what the booklet for  
Hex(FF5372) contains.

<b>Hex(FF5372)</b> .....	3
<b><i>Conversions</i></b> .....	4
<b><i>Details</i></b> .....	6
<b><i>Harmonies</i></b> .....	11
<b><i>Previews</i></b> .....	23
<b><i>Color Blindness Simulation</i></b> .....	26
<b><i>CSS Examples</i></b> .....	29

# **Color**

**Hex(F5372)**

# Conversions

## Conversions Part 1

Format	Color
Hex	FF5372
RGB	255, 83, 114
RGB Percent	100%, 33%, 45%
CMY	0.0000, 0.6745, 0.5529
CMYK	0.00, 0.67, 0.55, 0.00
HSL	349°, 100%, 66%
HSV	349°, 67%, 100%
XYZ	47.3705, 28.6614, 18.9551
YIQ	137.9620, 92.5610, 46.1050

# Conversions

## Conversions Part 2

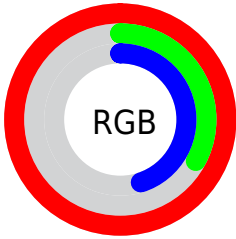
<b>Format</b>	<b>Color</b>
<a href="#">RYB</a>	255, 83, 114
Decimal	16733042
CIELab	60.48, 66.76, 20.19
CIElCh	60, 69.748, 16.827
Yxy	28.6614, 0.4987, 0.3017
Android (android.graphics.Color)	4294923122 (0xFFFF5372)
YUV	137.9620, -11.8133, 102.6423
Hunter-Lab	53.5364, 64.2533, 16.4832

# Details

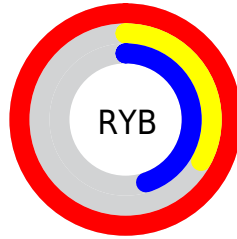
The Hex color **FF5372** is a light color, and the websafe version is hex **FF3366**. The color can be described as light muted rose. A complement of this color would be **53FFE0**, and the grayscale version is **8A8A8A**.

A 20% lighter version of the original color is **FF8EA6**, and **C00042** is the 20% darker color. If you saturate the color by 10%, you get **FF395D**, and if you desaturate by 10%, it is **FF6C87**.

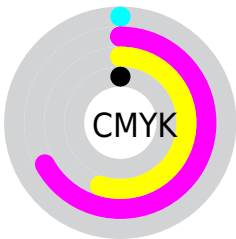
# Distribution



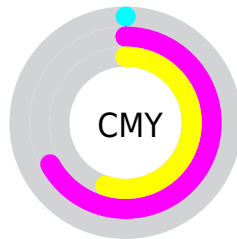
- Red (100%)
- Green (33%)
- Blue (45%)



- Red (100%)
- Yellow (33%)
- Blue (45%)



- Cyan (0%)
- Magenta (67%)
- Yellow (55%)
- Black (0%)



- Cyan (0%)
- Magenta (67%)
- Yellow (55%)

# Brightness & Saturation Gradients

These gradients show how the Hex color FF5372 changes by changing the brightness by 10 percent. The first figure shows a shift by +10% for each color and the second figure -10%.

Similar to the brightness gradients but the following saturation gradients show a change of the Hex color FF5372 by changing the saturation by 10% instead.



 FF5372

 FF5372

FFFFFF

 DF335A

 FF8EA6

 C00042

 FFABC1

 A1002D

 FFC8DD

 820019

 FFE5F9

 640000

 470003

 270001

 000000

 FF5372

 FF5372

 FF395D

 FF6C87

 FF2048

 FF869C

 FF0733

 FFA0B1

 FF002E

 FFB9C6

 FFD3DB

 FFECEF

FFFFFF

# Harmonies

## Analogous

The Analogous color harmony consists of three colors that are next to each other on the color wheel.



F256B0



FF5372



ED6A39

# Triad

The Triadic color harmony groups three colors that are evenly spaced from another and form a triangle on the color wheel.



FF5372



41A636



00A1FF

# Complementary

The Complementary color scheme is a pair of colors which are on the opposite of each other on the color wheel.



FF5372



53FFE0

# Split Complementary

Split-complementary colors differ from the complementary color scheme. The scheme consists of three colors, the original color and two neighbors of the complement color.



00ABEB



FF5372



00AC74

# Square

The Square scheme is like the rectangle color scheme, but the four colors are evenly spaced on the color wheel.



FF5372



8E9900



00AEB4



518DFF

# Rectangle

The Rectangle color scheme consists of four colors that form a rectangle on the color wheel.



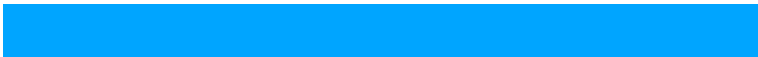
FF5372



D47D11



00AEB4



00A5FF



# Sweetspot

The Sweet Spot groups the original color and five complimentary colors.



FF5372



FFCCD5



DF53FF



806166



000000



808080



# Same Dimension

The Same Dimension uses a secret algorithm to generate beautiful new colors.



FF5372



FF3056



FF8953



807375



BF0022



40000B



# Inverse Universe

The Inverse Universe completely reimagines the original color for something new.



FF5372



FF3056



53C9FF



807375



BF0022



40000B



# Previews

## White Background



This preview shows how the Hex color FF5372 looks on a white background.

## Color Contrast Check

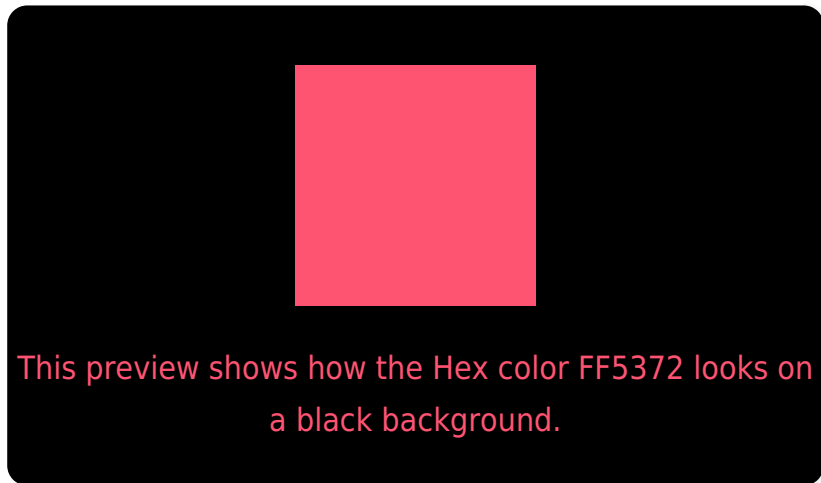
Large Text (above 18pt) WCAG AA ✓ Pass

Any Text WCAG AA ✗ Fail

Large Text (above 18pt) WCAG AAA ✗ Fail

Any Text WCAG AAA ✗ Fail

# Black Background



## Color Contrast Check

Large Text (above 18pt) WCAG AA ✓ Pass

Any Text WCAG AA ✓ Pass

Large Text (above 18pt) WCAG AAA ✓ Pass

Any Text WCAG AAA × Fail

If you want to check with other color combinations, try the [Color Contrast Checker](#).



## Hex FF5372 Background



This preview shows how black text looks on a background with the Hex color FF5372.

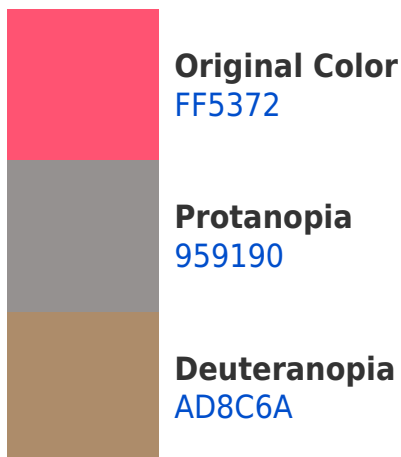


This preview shows how white text looks on a background with the Hex color FF5372.

# Color Blindness Simulation

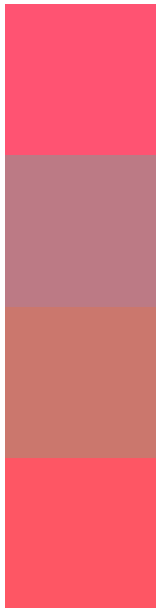
Color vision deficiency is a very complex topic, and I could not describe the different causes any better than Wikipedia does, so if you want to learn more, you should check out their [article about color blindness](#).

## Dichromacy





# Trichromacy



**Original Color**  
FF5372

**Protanomaly**  
BC7A85

**Deuteranomaly**  
CB776D

**Tritanomaly**  
FE5664

# Monochromacy



**Original Color**  
FF5372

**Achromatopsia**  
8A8A8A

**Achromatomaly**  
B57681

# CSS Examples

## Text

The CSS property to change the color of the text to Hex FF5372 is called "color". The color property can be set on classes, ids or directly on the HTML element.

This example shows how text in the color #FF5372 looks like.

```
.text, #text, p{  
    color:#FF5372  
}
```

If you want to add a text shadow in that color use the text-shadow property, you can generate a text shadow directly with our [CSS Text Shadow Generator](#).

Here you see how black text with a 4 pixel #FF5372 colored shadow looks like.

```
.shadow{ text-shadow: 4px 4px 2px #FF5372
}
```

## Border

The CSS property to change the border of an element to Hex FF5372 is called "border". The border property can be set on classes, ids or directly on the HTML element.

This example shows the color as border, it can be applied via the CSS property "border" or "border-color".

```
.border, #border, table{ border:4px solid
#FF5372 }
```

If only the border color should be changed use the property `border-color`.

```
.border{ border-color:#FF5372 }
```

If you want to add a box shadow in that color use:

Here you see how a box with a 4 pixel #FF5372 colored shadow looks like.

```
.boxshadow{ -moz-box-shadow:4px 4px 4px  
4px #FF5372; -webkit-box-shadow:4px 4px  
4px 4px #FF5372; box-shadow:4px 4px 4px  
4px #FF5372 }
```

# Background

The CSS property to change the background color of an element to Hex FF5372 is called "background". The background property can be set on classes, ids or directly on the HTML element.

```
.background, #background, body{  
background:#FF5372 }
```

If only the background color should be changed can be used:

```
.background{ background-color:#FF5372 }
```

This example shows the color as background, it is applied via the CSS property "background".

To optimize and compress your CSS code, you can use our [online CSS compressor and optimizer](#) based on csstidy. If you want to create a linear or radial gradient as background or border, check our [CSS Gradient Generator](#).



Hey! You found this booklet interesting? Support Converting Colors with the new Membership Option!

The pro membership hides all ads, plus gives you double the colors in the color bucket, and more awesome pro features!

**[Learn more, Memberships starting at \\$2.50/m!](#)**

**Follow me  
on Twitter!**

@ConvertingColor