

# Converting Colors

Hex(FF5474)

Have a look what the booklet for  
Hex(FF5474) contains.

<b>Hex(FF5474)</b> .....	3
<b><i>Conversions</i></b> .....	4
<b><i>Details</i></b> .....	6
<b><i>Harmonies</i></b> .....	11
<b><i>Previews</i></b> .....	23
<b><i>Color Blindness Simulation</i></b> .....	26
<b><i>CSS Examples</i></b> .....	29

# **Color**

**Hex(F5474)**

# Conversions

## Conversions Part 1

Format	Color
Hex	FF5474
RGB	255, 84, 116
RGB Percent	100%, 33%, 45%
CMY	0.0000, 0.6706, 0.5451
CMYK	0.00, 0.67, 0.55, 0.00
HSL	349°, 100%, 66%
HSV	349°, 67%, 100%
XYZ	47.5627, 28.8616, 19.5870
YIQ	138.7770, 91.6440, 46.2040

# Conversions

## Conversions Part 2

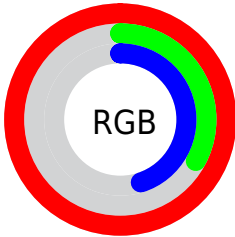
<b>Format</b>	<b>Color</b>
<b>R<sub>YB</sub></b>	255, 84, 116
Decimal	16733300
CIE <sub>Lab</sub>	60.66, 66.53, 19.27
CIE <sub>LCh</sub>	61, 69.266, 16.153
Yxy	28.8616, 0.4954, 0.3006
Android (android.graphics.Color)	4294923380 (0xFFFF5474)
YUV	138.7770, -11.2291, 101.9276
Hunter-Lab	53.7230, 64.0166, 15.9894

# Details

The Hex color **FF5474** is a light color, and the websafe version is hex **FF3366**. The color can be described as light muted rose. A complement of this color would be **54FFDF**, and the grayscale version is **8B8B8B**.

A 20% lighter version of the original color is **FF8EA8**, and **C00144** is the 20% darker color. If you saturate the color by 10%, you get **FF3A5F**, and if you desaturate by 10%, it is **FF6D89**.

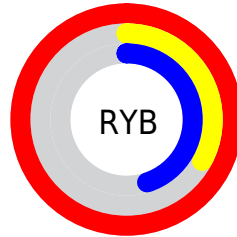
# Distribution



Red (100%)

Green (33%)

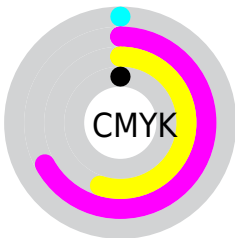
Blue (45%)



Red (100%)

Yellow (33%)

Blue (45%)

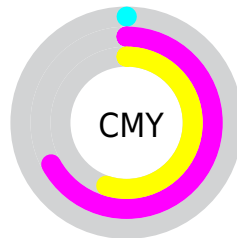


Cyan (0%)

Magenta (67%)

Yellow (55%)

Black (0%)



Cyan (0%)

Magenta (67%)

Yellow (55%)

# Brightness & Saturation Gradients

These gradients show how the Hex color FF5474 changes by changing the brightness by 10 percent. The first figure shows a shift by +10% for each color and the second figure -10%.

Similar to the brightness gradients but the following saturation gradients show a change of the Hex color FF5474 by changing the saturation by 10% instead.



 FF5474

 FF5474

FFFFFF

 DF345C

 FF8EA8

 C00144

 FFABC3

 A1002E

 FFC9DF

 82001A

 FFE6FB

 640000

 480003

 280001

 000000

 FF5474

 FF5474

 FF3A5F

 FF6D89

 FF214B

 FF879D

 FF0836

 FFA1B2

 FF0030

 FFBAC7

 FFD3DC

 FFEDF0

FFFFFF

# Harmonies

## Analogous

The Analogous color harmony consists of three colors that are next to each other on the color wheel.



F158B1



FF5474



EE6A3B

# Triad

The Triadic color harmony groups three colors that are evenly spaced from another and form a triangle on the color wheel.



FF5474



45A636



00A1FF

# Complementary

The Complementary color scheme is a pair of colors which are on the opposite of each other on the color wheel.



FF5474



54FFDF

# Split Complementary

Split-complementary colors differ from the complementary color scheme. The scheme consists of three colors, the original color and two neighbors of the complement color.



00ABEA



FF5474



00AD73

# Square

The Square scheme is like the rectangle color scheme, but the four colors are evenly spaced on the color wheel.



FF5474



909A00



00AEB3



4F8EFF

# Rectangle

The Rectangle color scheme consists of four colors that form a rectangle on the color wheel.



FF5474



D57D15



00AEB3



00A6FF



# Sweetspot

The Sweet Spot groups the original color and five complimentary colors.



FF5474



FFCCD6



DD54FF



806167



000000



808080



# Same Dimension

The Same Dimension uses a secret algorithm to generate beautiful new colors.



FF5474



FF3359



FF8754



807375



BF0024



40000C



# Inverse Universe

The Inverse Universe completely reimagines the original color for something new.



FF5474



FF3359



54CCFF



807375



BF0024



40000C



# Previews

## White Background



This preview shows how the Hex color FF5474 looks on a white background.

## Color Contrast Check

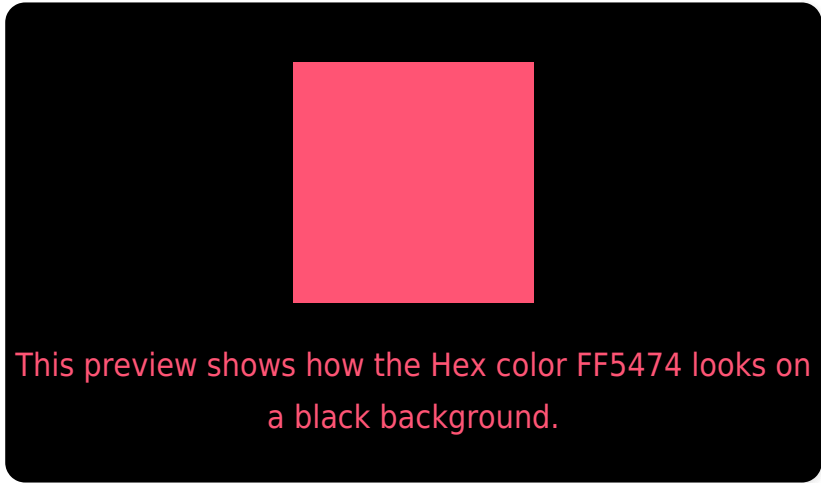
Large Text (above 18pt) WCAG AA ✓ Pass

Any Text WCAG AA × Fail

Large Text (above 18pt) WCAG AAA × Fail

Any Text WCAG AAA × Fail

# Black Background



## Color Contrast Check

Large Text (above 18pt) WCAG AA ✓ Pass

Any Text WCAG AA ✓ Pass

Large Text (above 18pt) WCAG AAA ✓ Pass

Any Text WCAG AAA × Fail

If you want to check with other color combinations, try the [Color Contrast Checker](#).



## Hex FF5474 Background



This preview shows how black text looks on a background with the Hex color FF5474.

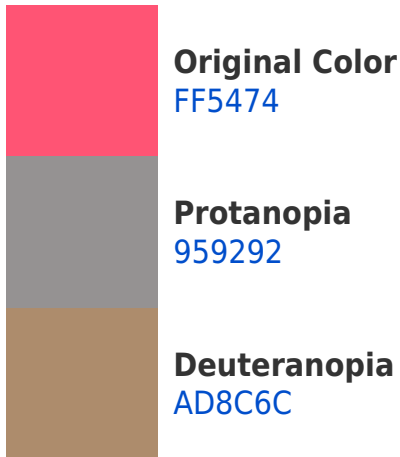


This preview shows how white text looks on a background with the Hex color FF5474.

# Color Blindness Simulation

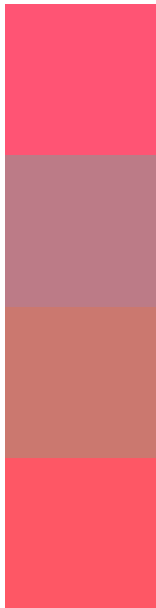
Color vision deficiency is a very complex topic, and I could not describe the different causes any better than Wikipedia does, so if you want to learn more, you should check out their [article about color blindness](#).

## Dichromacy





# Trichromacy



**Original Color**  
FF5474

**Protanomaly**  
BC7B87

**Deuteranomaly**  
CB786F

**Tritanomaly**  
FE5765

# Monochromacy



**Original Color**  
FF5474

**Achromatopsia**  
8B8B8B

**Achromatomaly**  
B57783

# CSS Examples

## Text

The CSS property to change the color of the text to Hex FF5474 is called "color". The color property can be set on classes, ids or directly on the HTML element.

This example shows how text in the color #FF5474 looks like.

```
.text, #text, p{  
    color:#FF5474  
}
```

If you want to add a text shadow in that color use the text-shadow property, you can generate a text shadow directly with our [CSS Text Shadow Generator](#).

Here you see how black text with a 4 pixel #FF5474 colored shadow looks like.

```
.shadow{ text-shadow: 4px 4px 2px #FF5474
}
```

## Border

The CSS property to change the border of an element to Hex FF5474 is called "border". The border property can be set on classes, ids or directly on the HTML element.

This example shows the color as border, it can be applied via the CSS property "border" or "border-color".

```
.border, #border, table{ border:4px solid
#FF5474 }
```

If only the border color should be changed use the property `border-color`.

```
.border{ border-color:#FF5474 }
```

If you want to add a box shadow in that color use:

Here you see how a box with a 4 pixel #FF5474 colored shadow looks like.

```
.boxshadow{ -moz-box-shadow:4px 4px 4px  
4px #FF5474; -webkit-box-shadow:4px 4px  
4px 4px #FF5474; box-shadow:4px 4px 4px  
4px #FF5474 }
```

# Background

The CSS property to change the background color of an element to Hex FF5474 is called "background". The background property can be set on classes, ids or directly on the HTML element.

```
.background, #background, body{  
background:#FF5474 }
```

If only the background color should be changed can be used:

```
.background{ background-color:#FF5474 }
```

This example shows the color as background, it is applied via the CSS property "background".

To optimize and compress your CSS code, you can use our [online CSS compressor and optimizer](#) based on csstidy. If you want to create a linear or radial gradient as background or border, check our [CSS Gradient Generator](#).



Hey! You found this booklet interesting? Support Converting Colors with the new Membership Option!

The pro membership hides all ads, plus gives you double the colors in the color bucket, and more awesome pro features!

**[Learn more, Memberships starting at \\$2.50/m!](#)**

**Follow me  
on Twitter!**

@ConvertingColor