

Converting Colors

Hex(FF5484)

Have a look what the booklet for
Hex(FF5484) contains.

Hex(FF5484)	3
<i>Conversions</i>	4
<i>Details</i>	6
<i>Harmonies</i>	11
<i>Previews</i>	23
<i>Color Blindness Simulation</i>	26
<i>CSS Examples</i>	29

Color

Hex(F5484)

Conversions

Conversions Part 1

Format	Color
Hex	FF5484
RGB	255, 84, 132
RGB Percent	100%, 33%, 52%
CMY	0.0000, 0.6706, 0.4824
CMYK	0.00, 0.67, 0.48, 0.00
HSL	343°, 100%, 66%
HSV	343°, 67%, 100%
XYZ	48.5752, 29.2666, 24.9186
YIQ	140.6010, 86.5080, 51.1800

Conversions

Conversions Part 2

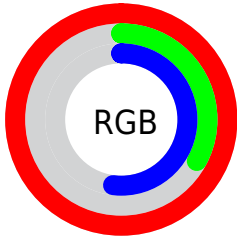
Format	Color
R_{YB}	255, 84, 132
Decimal	16733316
CIE _{Lab}	61.02, 67.79, 10.45
CIE _{LCh}	61, 68.591, 8.764
Yxy	29.2666, 0.4727, 0.2848
Android (android.graphics.Color)	4294923396 (0xFFFF5484)
YUV	140.6010, -4.2403, 100.3279
Hunter-Lab	54.0986, 65.6027, 10.5592

Details

The Hex color **FF5484** is a light color, and the websafe version is hex **FF6699**. The color can be described as light muted rose. A complement of this color would be **54FFCF**, and the grayscale version is **8D8D8D**.

A 20% lighter version of the original color is **FF8FB9**, and **C10053** is the 20% darker color. If you saturate the color by 10%, you get **FF3A72**, and if you desaturate by 10%, it is **FF6D96**.

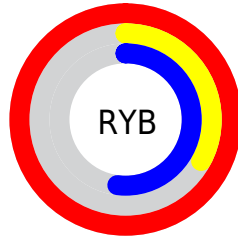
Distribution



Red (100%)

Green (33%)

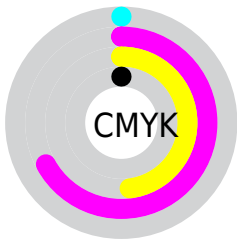
Blue (52%)



Red (100%)

Yellow (33%)

Blue (52%)

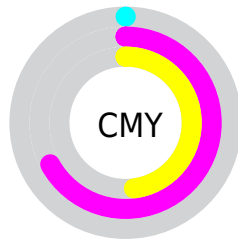


Cyan (0%)

Magenta (67%)

Yellow (48%)

Black (0%)



Cyan (0%)

Magenta (67%)

Yellow (48%)

Brightness & Saturation Gradients

These gradients show how the Hex color FF5484 changes by changing the brightness by 10 percent. The first figure shows a shift by +10% for each color and the second figure -10%.

Similar to the brightness gradients but the following saturation gradients show a change of the Hex color FF5484 by changing the saturation by 10% instead.

 FF5484

 FF5484

FFFFFF

 E0346B

 FF8FB9

 C10053

 FFACD4

 A2003C

 FFC9F1

 840027

 FFE7FF

 660013

 490003

 2A0001

 000000

 FF5484

 FF5484

 FF3A72

 FF6D96

 FF215F

 FF87A9

 FF084D

 FFA1BB

 FF0048

 FFBACD

 FFD3E0

 FFEDF2

FFFFFF

Harmonies

Analogous

The Analogous color harmony consists of three colors that are next to each other on the color wheel.



E95FC0



FF5484



F5654A

Triad

The Triadic color harmony groups three colors that are evenly spaced from another and form a triangle on the color wheel.



FF5484



5EA529



00A5FF

Complementary

The Complementary color scheme is a pair of colors which are on the opposite of each other on the color wheel.



FF5484



54FFCF

Split Complementary

Split-complementary colors differ from the complementary color scheme. The scheme consists of three colors, the original color and two neighbors of the complement color.



00ADDE



FF5484



00AC65

Square

The Square scheme is like the rectangle color scheme, but the four colors are evenly spaced on the color wheel.



FF5484



A09600



00AFA4



0095FF

Rectangle

The Rectangle color scheme consists of four colors that form a rectangle on the color wheel.



FF5484



E07727



00AFA4



00A9FB

Sweetspot

The Sweet Spot groups the original color and five complimentary colors.



FF5484



FFCCDA



CF54FF



806169



000000



808080

Same Dimension

The Same Dimension uses a secret algorithm to generate beautiful new colors.



FF5484



FF336C



FF7954



807376



BF0036



400012

Inverse Universe

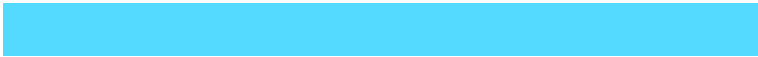
The Inverse Universe completely reimagines the original color for something new.



FF5484



FF336C



54DAFF



807376



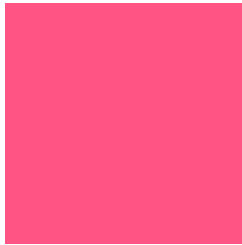
BF0036



400012

Previews

White Background



This preview shows how the Hex color FF5484 looks on a white background.

Color Contrast Check

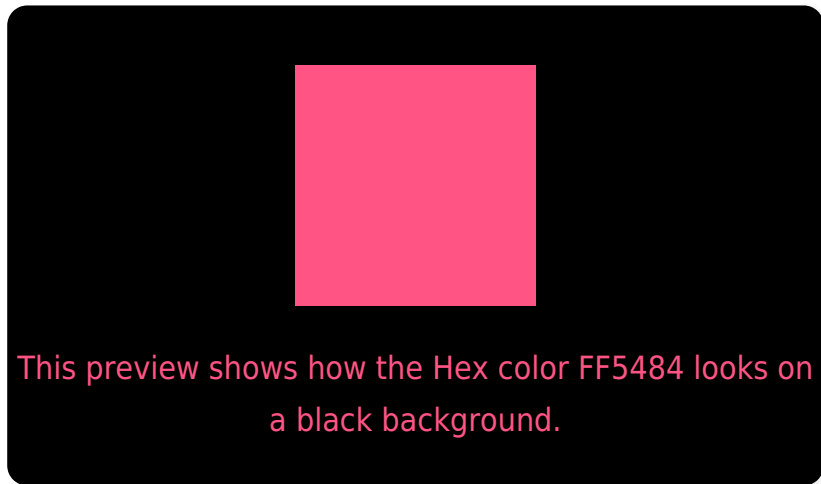
Large Text (above 18pt) WCAG AA ✓ Pass

Any Text WCAG AA × Fail

Large Text (above 18pt) WCAG AAA × Fail

Any Text WCAG AAA × Fail

Black Background



Color Contrast Check

Large Text (above 18pt) WCAG AA ✓ Pass

Any Text WCAG AA ✓ Pass

Large Text (above 18pt) WCAG AAA ✓ Pass

Any Text WCAG AAA × Fail

If you want to check with other color combinations, try the [Color Contrast Checker](#).

Hex FF5484 Background



This preview shows how black text looks on a background with the Hex color FF5484.

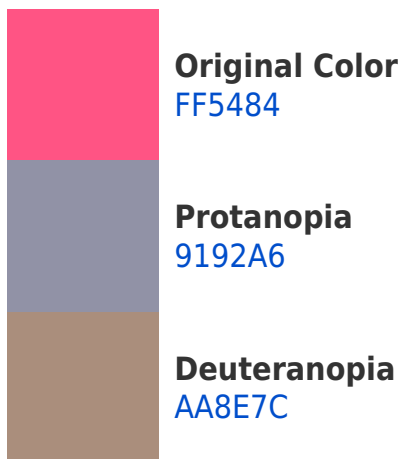


This preview shows how white text looks on a background with the Hex color FF5484.

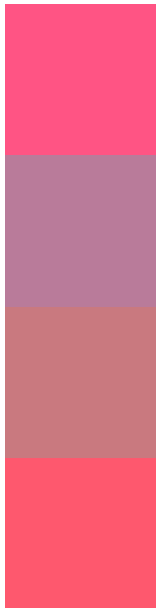
Color Blindness Simulation

Color vision deficiency is a very complex topic, and I could not describe the different causes any better than Wikipedia does, so if you want to learn more, you should check out their [article about color blindness](#).

Dichromacy



Trichromacy



Original Color
FF5484

Protanomaly
B97B9A

Deuteranomaly
C9797F

Tritanomaly
FE586E

Monochromacy



Original Color
FF5484

Achromatopsia
8D8D8D

Achromatomaly
B6788A

CSS Examples

Text

The CSS property to change the color of the text to Hex FF5484 is called "color". The color property can be set on classes, ids or directly on the HTML element.

This example shows how text in the color #FF5484 looks like.

```
.text, #text, p{  
    color:#FF5484  
}
```

If you want to add a text shadow in that color use the text-shadow property, you can generate a text shadow directly with our [CSS Text Shadow Generator](#).

Here you see how black text with a 4 pixel #FF5484 colored shadow looks like.

```
.shadow{ text-shadow: 4px 4px 2px #FF5484
}
```

Border

The CSS property to change the border of an element to Hex FF5484 is called "border". The border property can be set on classes, ids or directly on the HTML element.

This example shows the color as border, it can be applied via the CSS property "border" or "border-color".

```
.border, #border, table{ border:4px solid
#FF5484 }
```

If only the border color should be changed use the property `border-color`.

```
.border{ border-color:#FF5484 }
```

If you want to add a box shadow in that color use:

Here you see how a box with a 4 pixel #FF5484 colored shadow looks like.

```
.boxshadow{ -moz-box-shadow:4px 4px 4px  
4px #FF5484; -webkit-box-shadow:4px 4px  
4px 4px #FF5484; box-shadow:4px 4px 4px  
4px #FF5484 }
```

Background

The CSS property to change the background color of an element to Hex FF5484 is called "background". The background property can be set on classes, ids or directly on the HTML element.

```
.background, #background, body{  
background:#FF5484 }
```

If only the background color should be changed can be used:

```
.background{ background-color:#FF5484 }
```

This example shows the color as background, it is applied via the CSS property "background".

To optimize and compress your CSS code, you can use our [online CSS compressor and optimizer](#) based on csstidy. If you want to create a linear or radial gradient as background or border, check our [CSS Gradient Generator](#).

Hey! You found this booklet interesting? Support Converting Colors with the new Membership Option!

The pro membership hides all ads, plus gives you double the colors in the color bucket, and more awesome pro features!

[Learn more, Memberships starting at \\$2.50/m!](#)

**Follow me
on Twitter!**

@ConvertingColor