

Converting Colors

Hex(FF5674)

Have a look what the booklet for
Hex(FF5674) contains.

Hex(FF5674)	3
<i>Conversions</i>	4
<i>Details</i>	6
<i>Harmonies</i>	11
<i>Previews</i>	23
<i>Color Blindness Simulation</i>	26
<i>CSS Examples</i>	29

Color

Hex(F5674)

Conversions

Conversions Part 1

Format	Color
Hex	FF5674
RGB	255, 86, 116
RGB Percent	100%, 34%, 45%
CMY	0.0000, 0.6627, 0.5451
CMYK	0.00, 0.66, 0.55, 0.00
HSL	349°, 100%, 67%
HSV	349°, 66%, 100%
XYZ	47.7202, 29.1765, 19.6395
YIQ	139.9510, 91.0940, 45.1580

Conversions

Conversions Part 2

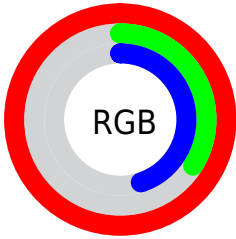
Format	Color
R _Y B	255, 86, 116
Decimal	16733812
CIE Lab	60.94, 65.77, 19.65
CIE LCh	61, 68.644, 16.633
Yxy	29.1765, 0.4943, 0.3022
Android (android.graphics.Color)	4294923892 (0xFFFF5674)
YUV	139.9510, -11.8078, 100.8980
Hunter-Lab	54.0153, 63.1702, 16.2534

Details

The Hex color **FF5674** is a light color, and the websafe version is hex **FF3366**. The color can be described as light muted rose. A complement of this color would be **56FFE1**, and the grayscale version is **8C8C8C**.

A 20% lighter version of the original color is **FF90A8**, and **C00844** is the 20% darker color. If you saturate the color by 10%, you get **FF3D5F**, and if you desaturate by 10%, it is **FF7089**.

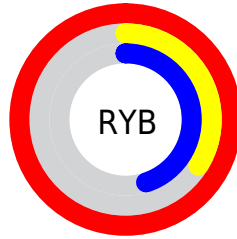
Distribution



Red (100%)

Green (34%)

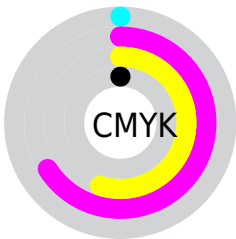
Blue (45%)



Red (100%)

Yellow (34%)

Blue (45%)

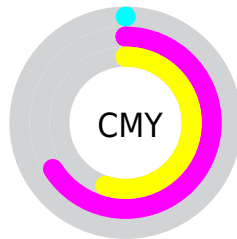


Cyan (0%)

Magenta (66%)

Yellow (55%)

Black (0%)



Cyan (0%)

Magenta (66%)

Yellow (55%)

Brightness & Saturation Gradients

These gradients show how the Hex color FF5674 changes by changing the brightness by 10 percent. The first figure shows a shift by +10% for each color and the second figure -10%.

Similar to the brightness gradients but the following saturation gradients show a change of the Hex color FF5674 by changing the saturation by 10% instead.

 FF5674

 FF5674

FFFFFF

 DF375C

 FF90A8

 C00844

 FFADC3

 A1002E

 FFCADF

 83001A

 FFE8FB

 650000

 480003

 280001

 000000

 FF5674

 FF5674

 FF3D5F

 FF7089

 FF234A

 FF899E

 FF0A35

 FFA3B3

 FF002D

 FFBCC8

 FFD6DD

 FFEFF2

FFFFFF

Harmonies

Analogous

The Analogous color harmony consists of three colors that are next to each other on the color wheel.



F259B1



FF5674



EE6C3C

Triad

The Triadic color harmony groups three colors that are evenly spaced from another and form a triangle on the color wheel.



FF5674



45A738



00A2FF

Complementary

The Complementary color scheme is a pair of colors which are on the opposite of each other on the color wheel.



FF5674



56FFE1

Split Complementary

Split-complementary colors differ from the complementary color scheme. The scheme consists of three colors, the original color and two neighbors of the complement color.



00ACEA



FF5674



00AD75

Square

The Square scheme is like the rectangle color scheme, but the four colors are evenly spaced on the color wheel.



FF5674



909A00



00AFB4



548EFF

Rectangle

The Rectangle color scheme consists of four colors that form a rectangle on the color wheel.



FF5674



D57E17



00AFB4



00A6FF

Sweetspot

The Sweet Spot groups the original color and five complimentary colors.



FF5674



FFCCD5



E056FF



806166



000000



808080

Same Dimension

The Same Dimension uses a secret algorithm to generate beautiful new colors.



FF5674



FF3357



FF8C56



807375



BF0022



40000B

Inverse Universe

The Inverse Universe completely reimagines the original color for something new.



FF5674



FF3357



56C9FF



807375



BF0022



40000B

Previews

White Background



This preview shows how the Hex color FF5674 looks on a white background.

Color Contrast Check

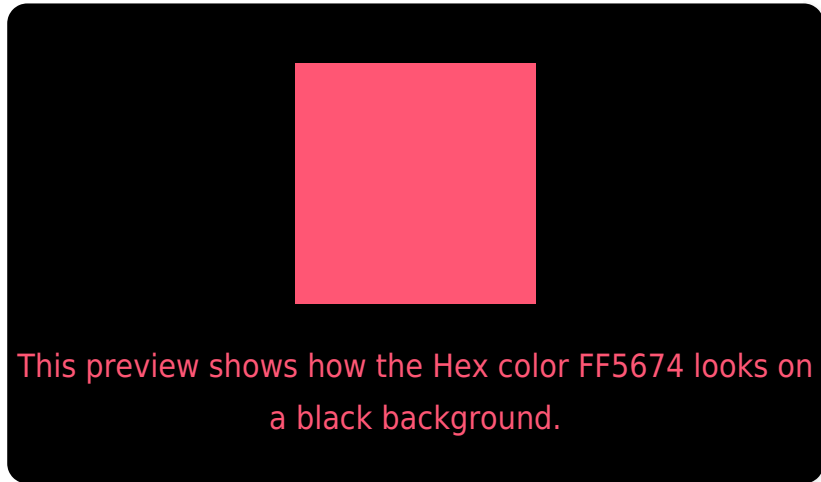
Large Text (above 18pt) WCAG AA ✓ Pass

Any Text WCAG AA × Fail

Large Text (above 18pt) WCAG AAA × Fail

Any Text WCAG AAA × Fail

Black Background



Color Contrast Check

Large Text (above 18pt) WCAG AA ✓ Pass

Any Text WCAG AA ✓ Pass

Large Text (above 18pt) WCAG AAA ✓ Pass

Any Text WCAG AAA × Fail

If you want to check with other color combinations, try the [Color Contrast Checker](#).

Hex FF5674 Background



This preview shows how black text looks on a background with the Hex color FF5674.

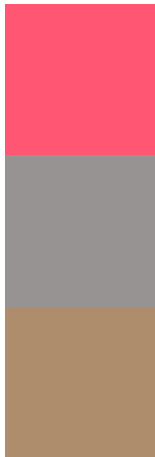


This preview shows how white text looks on a background with the Hex color FF5674.

Color Blindness Simulation

Color vision deficiency is a very complex topic, and I could not describe the different causes any better than Wikipedia does, so if you want to learn more, you should check out their [article about color blindness](#).

Dichromacy



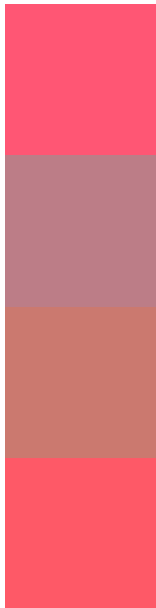
Original Color
FF5674

Protanopia
969392

Deuteranopia
AE8D6C



Trichromacy



Original Color
FF5674

Protanomaly
BC7D87

Deuteranomaly
CB796F

Tritanomaly
FE5967

Monochromacy



Original Color
FF5674

Achromatopsia
8C8C8C

Achromatomaly
B67883

CSS Examples

Text

The CSS property to change the color of the text to Hex FF5674 is called "color". The color property can be set on classes, ids or directly on the HTML element.

This example shows how text in the color #FF5674 looks like.

```
.text, #text, p{  
    color:#FF5674  
}
```

If you want to add a text shadow in that color use the text-shadow property, you can generate a text shadow directly with our [CSS Text Shadow Generator](#).

Here you see how black text with a 4 pixel #FF5674 colored shadow looks like.

```
.shadow{ text-shadow: 4px 4px 2px #FF5674
}
```

Border

The CSS property to change the border of an element to Hex FF5674 is called "border". The border property can be set on classes, ids or directly on the HTML element.

This example shows the color as border, it can be applied via the CSS property "border" or "border-color".

```
.border, #border, table{ border:4px solid
#FF5674 }
```

If only the border color should be changed use the property `border-color`.

```
.border{ border-color:#FF5674 }
```

If you want to add a box shadow in that color use:

Here you see how a box with a 4 pixel #FF5674 colored shadow looks like.

```
.boxshadow{ -moz-box-shadow:4px 4px 4px  
4px #FF5674; -webkit-box-shadow:4px 4px  
4px 4px #FF5674; box-shadow:4px 4px 4px  
4px #FF5674 }
```

Background

The CSS property to change the background color of an element to Hex FF5674 is called "background". The background property can be set on classes, ids or directly on the HTML element.

```
.background, #background, body{  
background:#FF5674 }
```

If only the background color should be changed can be used:

```
.background{ background-color:#FF5674 }
```

This example shows the color as background, it is applied via the CSS property "background".

To optimize and compress your CSS code, you can use our [online CSS compressor and optimizer](#) based on csstidy. If you want to create a linear or radial gradient as background or border, check our [CSS Gradient Generator](#).

Hey! You found this booklet interesting? Support Converting Colors with the new Membership Option!

The pro membership hides all ads, plus gives you double the colors in the color bucket, and more awesome pro features!

[Learn more, Memberships starting at \\$2.50/m!](#)

**Follow me
on Twitter!**

@ConvertingColor