

Converting Colors

Hex(FF5781)

Have a look what the booklet for
Hex(FF5781) contains.

Hex(FF5781)	3
<i>Conversions</i>	4
<i>Details</i>	6
<i>Harmonies</i>	11
<i>Previews</i>	23
<i>Color Blindness Simulation</i>	26
<i>CSS Examples</i>	29

Color

Hex(F5781)

Conversions

Conversions Part 1

Format	Color
Hex	FF5781
RGB	255, 87, 129
RGB Percent	100%, 34%, 51%
CMY	0.0000, 0.6588, 0.4941
CMYK	0.00, 0.66, 0.49, 0.00
HSL	345°, 100%, 67%
HSV	345°, 66%, 100%
XYZ	48.6106, 29.6614, 23.9320
YIQ	142.0200, 86.6460, 48.6780

Conversions

Conversions Part 2

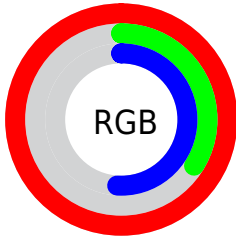
Format	Color
R _Y B	255, 87, 129
Decimal	16734081
CIE Lab	61.36, 66.40, 12.68
CIE LCh	61, 67.602, 10.813
Yxy	29.6614, 0.4756, 0.2902
Android (android.graphics.Color)	4294924161 (0xFFFF5781)
YUV	142.0200, -6.4189, 99.0835
Hunter-Lab	54.4623, 64.0124, 12.0701

Details

The Hex color **FF5781** is a light color, and the websafe version is hex **FF6699**. The color can be described as light muted rose. A complement of this color would be **57FFD5**, and the grayscale version is **8E8E8E**.

A 20% lighter version of the original color is **FF91B6**, and **C10A50** is the 20% darker color. If you saturate the color by 10%, you get **FF3E6E**, and if you desaturate by 10%, it is **FF7194**.

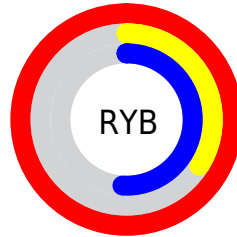
Distribution



Red (100%)

Green (34%)

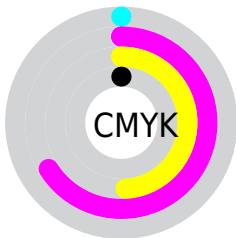
Blue (51%)



Red (100%)

Yellow (34%)

Blue (51%)

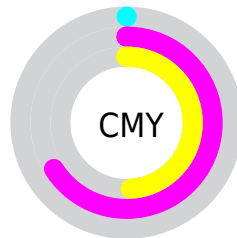


Cyan (0%)

Magenta (66%)

Yellow (49%)

Black (0%)



Cyan (0%)

Magenta (66%)

Yellow (49%)

Brightness & Saturation Gradients

These gradients show how the Hex color FF5781 changes by changing the brightness by 10 percent. The first figure shows a shift by +10% for each color and the second figure -10%.

Similar to the brightness gradients but the following saturation gradients show a change of the Hex color FF5781 by changing the saturation by 10% instead.

 FF5781

 FF5781

FFFFFF

 E03868

 FF91B6

 C10A50

 FFAED1

 A2003A

 FFCBED

 840025

 FFE9FF

 660010

 490003

 2A0001

 000000

 FF5781

 FF5781

 FF3E6E

 FF7194

 FF245B

 FF8AA7

 FF0B48

 FFA4BA

 FF0040

 FFBDC E

 FFD7E1

 FFF0F4

FFFFFF

Harmonies

Analogous

The Analogous color harmony consists of three colors that are next to each other on the color wheel.



EB5FBD



FF5781



F36948

Triad

The Triadic color harmony groups three colors that are evenly spaced from another and form a triangle on the color wheel.



FF5781



5AA630



00A5FF

Complementary

The Complementary color scheme is a pair of colors which are on the opposite of each other on the color wheel.



FF5781



57FFD5

Split Complementary

Split-complementary colors differ from the complementary color scheme. The scheme consists of three colors, the original color and two neighbors of the complement color.



00AEE1



FF5781



00AD6A

Square

The Square scheme is like the rectangle color scheme, but the four colors are evenly spaced on the color wheel.



FF5781



9D9800



00B0A9



2C94FF

Rectangle

The Rectangle color scheme consists of four colors that form a rectangle on the color wheel.



FF5781



DE7A26



00B0A9



00A9FC

Sweetspot

The Sweet Spot groups the original color and five complimentary colors.



FF5781



FFCCD9



D557FF



806169



000000



808080

Same Dimension

The Same Dimension uses a secret algorithm to generate beautiful new colors.



FF5781



FF3668



FF8157



807376



BF0030



400010

Inverse Universe

The Inverse Universe completely reimagines the original color for something new.



FF5781



FF3668



57D5FF



807376



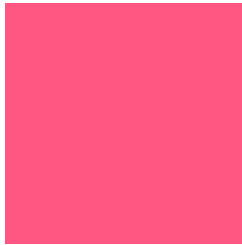
BF0030



400010

Previews

White Background



This preview shows how the Hex color FF5781 looks on a white background.

Color Contrast Check

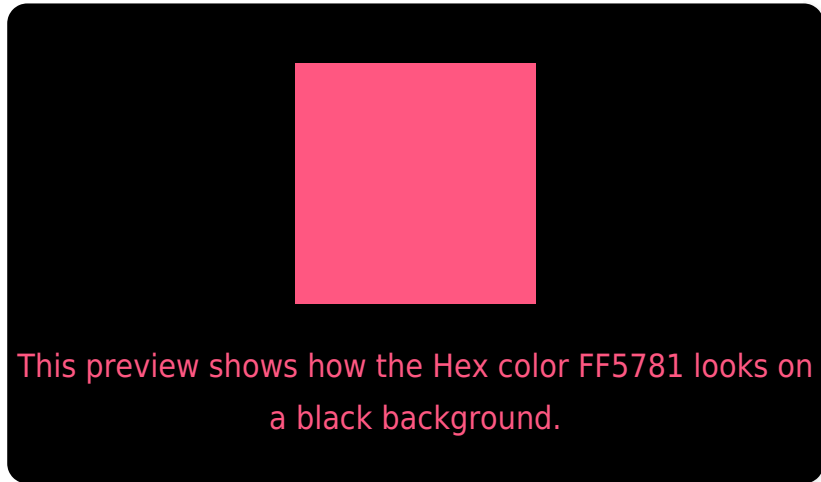
Large Text (above 18pt) WCAG AA ✓ Pass

Any Text WCAG AA × Fail

Large Text (above 18pt) WCAG AAA × Fail

Any Text WCAG AAA × Fail

Black Background



Color Contrast Check

Large Text (above 18pt) WCAG AA ✓ Pass

Any Text WCAG AA ✓ Pass

Large Text (above 18pt) WCAG AAA ✓ Pass

Any Text WCAG AAA × Fail

If you want to check with other color combinations, try the [Color Contrast Checker](#).

Hex FF5781 Background



This preview shows how black text looks on a background with the Hex color FF5781.



This preview shows how white text looks on a background with the Hex color FF5781.

Color Blindness Simulation

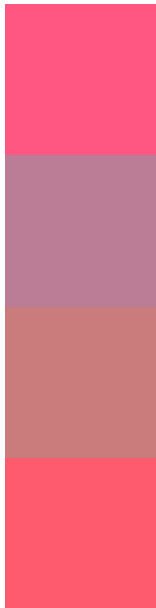
Color vision deficiency is a very complex topic, and I could not describe the different causes any better than Wikipedia does, so if you want to learn more, you should check out their [article about color blindness](#).

Dichromacy





Trichromacy



Original Color
FF5781

Protanomaly
BA7D95

Deuteranomaly
CA7B7C

Tritanomaly
FE5B6E

Monochromacy



Original Color
FF5781

Achromatopsia
8E8E8E

Achromatomaly
B77A89

CSS Examples

Text

The CSS property to change the color of the text to Hex FF5781 is called "color". The color property can be set on classes, ids or directly on the HTML element.

This example shows how text in the color #FF5781 looks like.

```
.text, #text, p{  
    color:#FF5781  
}
```

If you want to add a text shadow in that color use the text-shadow property, you can generate a text shadow directly with our [CSS Text Shadow Generator](#).

Here you see how black text with a 4 pixel #FF5781 colored shadow looks like.

```
.shadow{ text-shadow: 4px 4px 2px #FF5781
}
```

Border

The CSS property to change the border of an element to Hex FF5781 is called "border". The border property can be set on classes, ids or directly on the HTML element.

This example shows the color as border, it can be applied via the CSS property "border" or "border-color".

```
.border, #border, table{ border:4px solid
#FF5781 }
```

If only the border color should be changed use the property `border-color`.

```
.border{ border-color:#FF5781 }
```

If you want to add a box shadow in that color use:

Here you see how a box with a 4 pixel #FF5781 colored shadow looks like.

```
.boxshadow{ -moz-box-shadow:4px 4px 4px  
4px #FF5781; -webkit-box-shadow:4px 4px  
4px 4px #FF5781; box-shadow:4px 4px 4px  
4px #FF5781 }
```

Background

The CSS property to change the background color of an element to Hex FF5781 is called "background". The background property can be set on classes, ids or directly on the HTML element.

```
.background, #background, body{  
background:#FF5781 }
```

If only the background color should be changed can be used:

```
.background{ background-color:#FF5781 }
```

This example shows the color as background, it is applied via the CSS property "background".

To optimize and compress your CSS code, you can use our [online CSS compressor and optimizer](#) based on csstidy. If you want to create a linear or radial gradient as background or border, check our [CSS Gradient Generator](#).

Hey! You found this booklet interesting? Support Converting Colors with the new Membership Option!

The pro membership hides all ads, plus gives you double the colors in the color bucket, and more awesome pro features!

[Learn more, Memberships starting at \\$2.50/m!](#)

**Follow me
on Twitter!**

@ConvertingColor