

Converting Colors

Hex(FF587B)

Have a look what the booklet for
Hex(FF587B) contains.

Hex(FF587B)	3
<i>Conversions</i>	4
<i>Details</i>	6
<i>Harmonies</i>	11
<i>Previews</i>	23
<i>Color Blindness Simulation</i>	26
<i>CSS Examples</i>	29

Color

Hex(F587B)

Conversions

Conversions Part 1

Format	Color
Hex	FF587B
RGB	255, 88, 123
RGB Percent	100%, 35%, 48%
CMY	0.0000, 0.6549, 0.5176
CMYK	0.00, 0.65, 0.52, 0.00
HSL	347°, 100%, 67%
HSV	347°, 65%, 100%
XYZ	48.3049, 29.6695, 21.9197
YIQ	141.9230, 88.2970, 46.2890

Conversions

Conversions Part 2

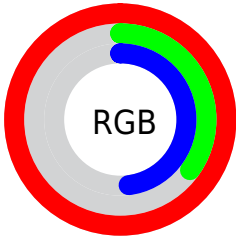
Format	Color
R _Y B	255, 88, 123
Decimal	16734331
CIE Lab	61.37, 65.53, 16.18
CIE LCh	61, 67.498, 13.867
Yxy	29.6695, 0.4836, 0.2970
Android (android.graphics.Color)	4294924411 (0xFFFF587B)
YUV	141.9230, -9.3290, 99.1685
Hunter-Lab	54.4697, 62.9755, 14.2693

Details

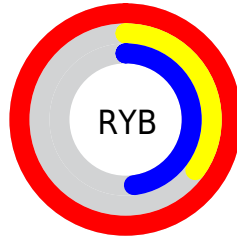
The Hex color **FF587B** is a light color, and the websafe version is hex **FF3366**. The color can be described as light muted rose. A complement of this color would be **58FFDC**, and the grayscale version is **8E8E8E**.

A 20% lighter version of the original color is **FF92AF**, and **C00F4B** is the 20% darker color. If you saturate the color by 10%, you get **FF3F67**, and if you desaturate by 10%, it is **FF728F**.

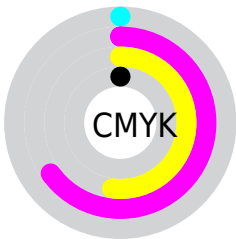
Distribution



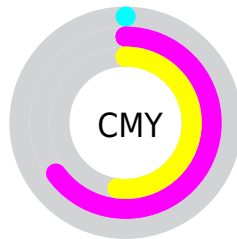
- Red (100%)
- Green (35%)
- Blue (48%)



- Red (100%)
- Yellow (35%)
- Blue (48%)



- Cyan (0%)
- Magenta (65%)
- Yellow (52%)
- Black (0%)



- Cyan (0%)
- Magenta (65%)
- Yellow (52%)

Brightness & Saturation Gradients

These gradients show how the Hex color FF587B changes by changing the brightness by 10 percent. The first figure shows a shift by +10% for each color and the second figure -10%.

Similar to the brightness gradients but the following saturation gradients show a change of the Hex color FF587B by changing the saturation by 10% instead.

 FF587B

 FF587B

FFFFFF

 E03962

 FF92AF

 C00F4B

 FFAFCB

 A20034

 FFCCE7

 830020

 FFEAFF

 650008

 490003

 290001

 000000

 FF587B

 FF587B

 FF3F67

 FF728F

 FF2553

 FF8BA3

 FF0C3F

 FFA5B7

 FF0035

 FFBECC

 FFD8E0

 FFF1F4

FFFFFF

Harmonies

Analogous

The Analogous color harmony consists of three colors that are next to each other on the color wheel.



EF5EB7



FF587B



F06C43

Triad

The Triadic color harmony groups three colors that are evenly spaced from another and form a triangle on the color wheel.



FF587B



52A736



00A4FF

Complementary

The Complementary color scheme is a pair of colors which are on the opposite of each other on the color wheel.



FF587B



58FFDC

Split Complementary

Split-complementary colors differ from the complementary color scheme. The scheme consists of three colors, the original color and two neighbors of the complement color.



00ADE6



FF587B



00AE71

Square

The Square scheme is like the rectangle color scheme, but the four colors are evenly spaced on the color wheel.



FF587B



979A00



00B0AF



4792FF

Rectangle

The Rectangle color scheme consists of four colors that form a rectangle on the color wheel.



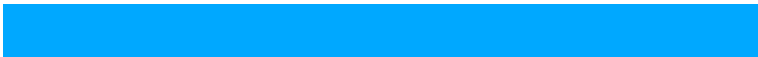
FF587B



DA7D21



00B0AF



00A8FF

Sweetspot

The Sweet Spot groups the original color and five complimentary colors.



FF587B



FFCCD7



DB58FF



806167



000000



808080

Same Dimension

The Same Dimension uses a secret algorithm to generate beautiful new colors.



FF587B



FF3660



FF8758



807375



BF0028



40000D

Inverse Universe

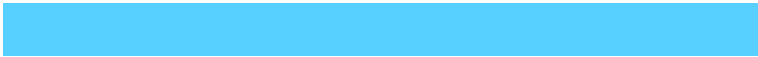
The Inverse Universe completely reimagines the original color for something new.



FF587B



FF3660



58D0FF



807375



BF0028



40000D

Previews

White Background



This preview shows how the Hex color FF587B looks on a white background.

Color Contrast Check

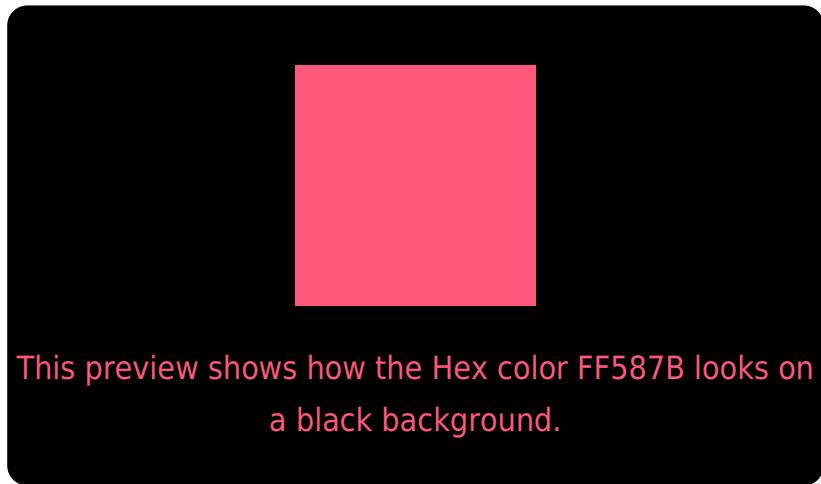
Large Text (above 18pt) WCAG AA ✓ Pass

Any Text WCAG AA × Fail

Large Text (above 18pt) WCAG AAA × Fail

Any Text WCAG AAA × Fail

Black Background



Color Contrast Check

Large Text (above 18pt) WCAG AA ✓ Pass

Any Text WCAG AA ✓ Pass

Large Text (above 18pt) WCAG AAA ✓ Pass

Any Text WCAG AAA × Fail

If you want to check with other color combinations, try the [Color Contrast Checker](#).

Hex FF587B Background



This preview shows how black text looks on a background with the Hex color FF587B.



This preview shows how white text looks on a background with the Hex color FF587B.

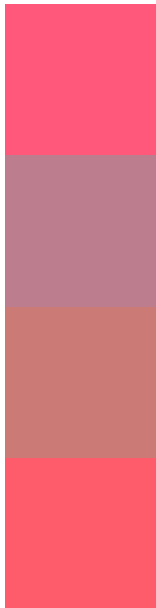
Color Blindness Simulation

Color vision deficiency is a very complex topic, and I could not describe the different causes any better than Wikipedia does, so if you want to learn more, you should check out their [article about color blindness](#).

Dichromacy



Trichromacy



Original Color
FF587B

Protanomaly
BC7E8F

Deuteranomaly
CB7A76

Tritanomaly
FE5B6B

Monochromacy



Original Color
FF587B

Achromatopsia
8E8E8E

Achromatomaly
B77A87

CSS Examples

Text

The CSS property to change the color of the text to Hex FF587B is called "color". The color property can be set on classes, ids or directly on the HTML element.

This example shows how text in the color #FF587B looks like.

```
.text, #text, p{  
    color:#FF587B  
}
```

If you want to add a text shadow in that color use the text-shadow property, you can generate a text shadow directly with our [CSS Text Shadow Generator](#).

Here you see how black text with a 4 pixel #FF587B colored shadow looks like.

```
.shadow{ text-shadow: 4px 4px 2px #FF587B
}
```

Border

The CSS property to change the border of an element to Hex FF587B is called "border". The border property can be set on classes, ids or directly on the HTML element.

This example shows the color as border, it can be applied via the CSS property "border" or "border-color".

```
.border, #border, table{ border:4px solid
#FF587B }
```

If only the border color should be changed use the property `border-color`.

```
.border{ border-color:#FF587B }
```

If you want to add a box shadow in that color use:

Here you see how a box with a 4 pixel #FF587B colored shadow looks like.

```
.boxshadow{ -moz-box-shadow:4px 4px 4px  
4px #FF587B; -webkit-box-shadow:4px 4px  
4px 4px #FF587B; box-shadow:4px 4px 4px  
4px #FF587B }
```

Background

The CSS property to change the background color of an element to Hex FF587B is called "background". The background property can be set on classes, ids or directly on the HTML element.

```
.background, #background, body{  
background:#FF587B }
```

If only the background color should be changed can be used:

```
.background{ background-color:#FF587B }
```

This example shows the color as background, it is applied via the CSS property "background".

To optimize and compress your CSS code, you can use our [online CSS compressor and optimizer](#) based on csstidy. If you want to create a linear or radial gradient as background or border, check our [CSS Gradient Generator](#).

Hey! You found this booklet interesting? Support Converting Colors with the new Membership Option!

The pro membership hides all ads, plus gives you double the colors in the color bucket, and more awesome pro features!

[Learn more, Memberships starting at \\$2.50/m!](#)

**Follow me
on Twitter!**

@ConvertingColor