

Converting Colors

Hex(FF5981)

Have a look what the booklet for
Hex(FF5981) contains.

Hex(FF5981)	3
<i>Conversions</i>	4
<i>Details</i>	6
<i>Harmonies</i>	11
<i>Previews</i>	23
<i>Color Blindness Simulation</i>	26
<i>CSS Examples</i>	29

Color

Hex(F5981)

Conversions

Conversions Part 1

Format	Color
Hex	FF5981
RGB	255, 89, 129
RGB Percent	100%, 35%, 51%
CMY	0.0000, 0.6510, 0.4941
CMYK	0.00, 0.65, 0.49, 0.00
HSL	346°, 100%, 67%
HSV	346°, 65%, 100%
XYZ	48.7748, 29.9897, 23.9868
YIQ	143.1940, 86.0960, 47.6320

Conversions

Conversions Part 2

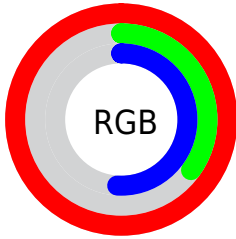
Format	Color
R _Y B	255, 89, 129
Decimal	16734593
CIE Lab	61.65, 65.62, 13.08
CIE LCh	62, 66.916, 11.273
Yxy	29.9897, 0.4747, 0.2919
Android (android.graphics.Color)	4294924673 (0xFFFF5981)
YUV	143.1940, -6.9976, 98.0539
Hunter-Lab	54.7629, 63.1468, 12.3643

Details

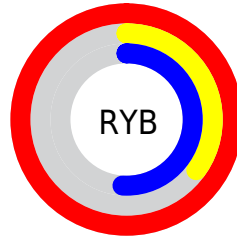
The Hex color **FF5981** is a light color, and the websafe version is hex **FF6699**. The color can be described as light muted rose. A complement of this color would be **59FFD7**, and the grayscale version is **8F8F8F**.

A 20% lighter version of the original color is **FF93B6**, and **C11150** is the 20% darker color. If you saturate the color by 10%, you get **FF406E**, and if you desaturate by 10%, it is **FF7394**.

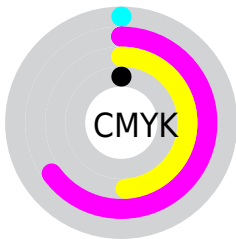
Distribution



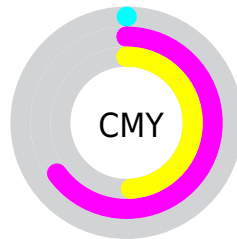
- Red (100%)
- Green (35%)
- Blue (51%)



- Red (100%)
- Yellow (35%)
- Blue (51%)



- Cyan (0%)
- Magenta (65%)
- Yellow (49%)
- Black (0%)



- Cyan (0%)
- Magenta (65%)
- Yellow (49%)

Brightness & Saturation Gradients

These gradients show how the Hex color FF5981 changes by changing the brightness by 10 percent. The first figure shows a shift by +10% for each color and the second figure -10%.

Similar to the brightness gradients but the following saturation gradients show a change of the Hex color FF5981 by changing the saturation by 10% instead.

 FF5981

 FF5981

FFFFFF

 E03A68

 FF93B6

 C11150

 FFB0D1

 A2003A

 FFCDED

 840024

 FFE8FF

 660010

 490003

 2A0001

 000000

 FF5981

 FF5981

 FF406E

 FF7394

 FF265A

 FF8CA8

 FF0D47

 FFA6BB

 FF003D

 FFBFCE

 FFD9E2

 FFF2F5

FFFFFF

Harmonies

Analogous

The Analogous color harmony consists of three colors that are next to each other on the color wheel.



EC61BC



FF5981



F36B49

Triad

The Triadic color harmony groups three colors that are evenly spaced from another and form a triangle on the color wheel.



FF5981



5BA733



00A6FF

Complementary

The Complementary color scheme is a pair of colors which are on the opposite of each other on the color wheel.



FF5981



59FFD7

Split Complementary

Split-complementary colors differ from the complementary color scheme. The scheme consists of three colors, the original color and two neighbors of the complement color.



00AEE2



FF5981



00AE6D

Square

The Square scheme is like the rectangle color scheme, but the four colors are evenly spaced on the color wheel.



FF5981



9D9900



00B1AA



3694FF

Rectangle

The Rectangle color scheme consists of four colors that form a rectangle on the color wheel.



FF5981



DD7C28



00B1AA



00A9FC

Sweetspot

The Sweet Spot groups the original color and five complimentary colors.



FF5981



FFCCD8



D659FF



806168



000000



808080

Same Dimension

The Same Dimension uses a secret algorithm to generate beautiful new colors.



FF5981



FF3868



FF8359



807376



BF002E



40000F

Inverse Universe

The Inverse Universe completely reimagines the original color for something new.



FF5981



FF3868



59D6FF



807376



BF002E



40000F

Previews

White Background



This preview shows how the Hex color FF5981 looks on a white background.

Color Contrast Check

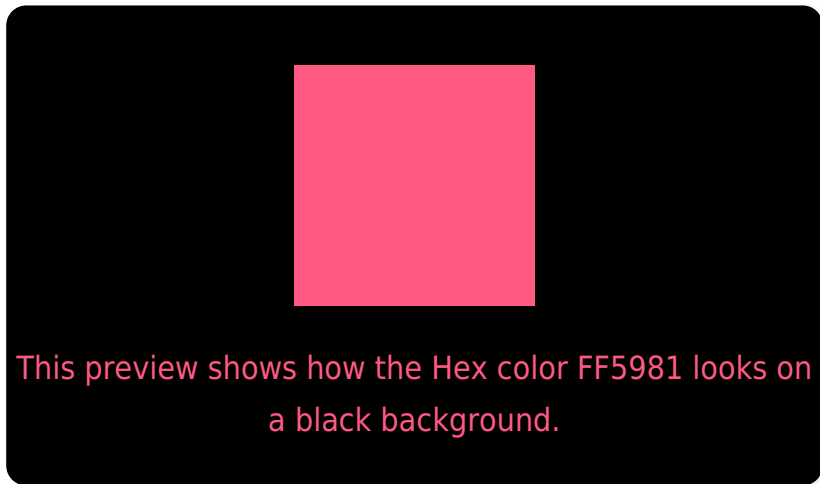
Large Text (above 18pt) WCAG AA ✓ Pass

Any Text WCAG AA × Fail

Large Text (above 18pt) WCAG AAA × Fail

Any Text WCAG AAA × Fail

Black Background



Color Contrast Check

Large Text (above 18pt) WCAG AA ✓ Pass

Any Text WCAG AA ✓ Pass

Large Text (above 18pt) WCAG AAA ✓ Pass

Any Text WCAG AAA ✓ Pass

If you want to check with other color combinations, try the [Color Contrast Checker](#).

Hex FF5981 Background



This preview shows how black text looks on a background with the Hex color FF5981.



This preview shows how white text looks on a background with the Hex color FF5981.

Color Blindness Simulation

Color vision deficiency is a very complex topic, and I could not describe the different causes any better than Wikipedia does, so if you want to learn more, you should check out their [article about color blindness](#).

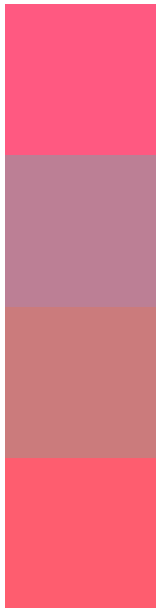
Dichromacy





Tritanopia
FD5F64

Trichromacy



Original Color
FF5981

Protanomaly
BC7F95

Deuteranomaly
CB7B7C

Tritanomaly
FE5D6F

Monochromacy



Original Color
FF5981

Achromatopsia
8F8F8F

Achromatomaly
B87B8A

CSS Examples

Text

The CSS property to change the color of the text to Hex FF5981 is called "color". The color property can be set on classes, ids or directly on the HTML element.

This example shows how text in the color #FF5981 looks like.

```
.text, #text, p{  
    color:#FF5981  
}
```

If you want to add a text shadow in that color use the text-shadow property, you can generate a text shadow directly with our [CSS Text Shadow Generator](#).

Here you see how black text with a 4 pixel #FF5981 colored shadow looks like.

```
.shadow{ text-shadow: 4px 4px 2px #FF5981
}
```

Border

The CSS property to change the border of an element to Hex FF5981 is called "border". The border property can be set on classes, ids or directly on the HTML element.

This example shows the color as border, it can be applied via the CSS property "border" or "border-color".

```
.border, #border, table{ border:4px solid
#FF5981 }
```

If only the border color should be changed use the property `border-color`.

```
.border{ border-color:#FF5981 }
```

If you want to add a box shadow in that color use:

Here you see how a box with a 4 pixel #FF5981 colored shadow looks like.

```
.boxshadow{ -moz-box-shadow:4px 4px 4px  
4px #FF5981; -webkit-box-shadow:4px 4px  
4px 4px #FF5981; box-shadow:4px 4px 4px  
4px #FF5981 }
```

Background

The CSS property to change the background color of an element to Hex FF5981 is called "background". The background property can be set on classes, ids or directly on the HTML element.

```
.background, #background, body{  
background:#FF5981 }
```

If only the background color should be changed can be used:

```
.background{ background-color:#FF5981 }
```

This example shows the color as background, it is applied via the CSS property "background".

To optimize and compress your CSS code, you can use our [online CSS compressor and optimizer](#) based on csstidy. If you want to create a linear or radial gradient as background or border, check our [CSS Gradient Generator](#).

Hey! You found this booklet interesting? Support Converting Colors with the new Membership Option!

The pro membership hides all ads, plus gives you double the colors in the color bucket, and more awesome pro features!

[Learn more, Memberships starting at \\$2.50/m!](#)

**Follow me
on Twitter!**

@ConvertingColor