

Converting Colors

Hex(FF5A8E)

Have a look what the booklet for
Hex(FF5A8E) contains.

Hex(FF5A8E)	3
<i>Conversions</i>	4
<i>Details</i>	6
<i>Harmonies</i>	11
<i>Previews</i>	23
<i>Color Blindness Simulation</i>	26
<i>CSS Examples</i>	29

Color

Hex(F5A8E)

Conversions

Conversions Part 1

Format	Color
Hex	FF5A8E
RGB	255, 90, 142
RGB Percent	100%, 35%, 56%
CMY	0.0000, 0.6471, 0.4431
CMYK	0.00, 0.65, 0.44, 0.00
HSL	341°, 100%, 68%
HSV	341°, 65%, 100%
XYZ	49.7786, 30.5253, 28.8595
YIQ	145.2630, 81.6480, 51.1520

Conversions

Conversions Part 2

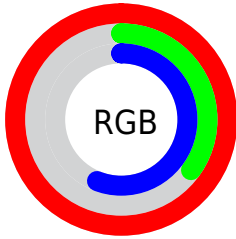
Format	Color
R _Y B	255, 90, 142
Decimal	16734862
CIE Lab	62.10, 66.37, 6.19
CIE LCh	62, 66.660, 5.330
Yxy	30.5253, 0.4560, 0.2796
Android (android.graphics.Color)	4294924942 (0xFFFF5A8E)
YUV	145.2630, -1.6087, 96.2393
Hunter-Lab	55.2497, 64.1371, 7.7048

Details

The Hex color **FF5A8E** is a light color, and the websafe version is hex **FF6699**. The color can be described as light muted rose. A complement of this color would be **5AFFCB**, and the grayscale version is **919191**.

A 20% lighter version of the original color is **FF94C3**, and **C1125C** is the 20% darker color. If you saturate the color by 10%, you get **FF417D**, and if you desaturate by 10%, it is **FF749F**.

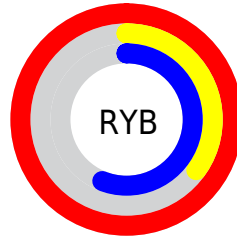
Distribution



Red (100%)

Green (35%)

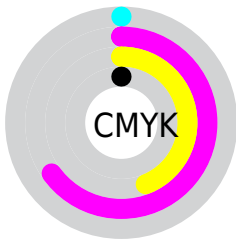
Blue (56%)



Red (100%)

Yellow (35%)

Blue (56%)

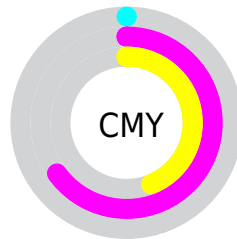


Cyan (0%)

Magenta (65%)

Yellow (44%)

Black (0%)



Cyan (0%)

Magenta (65%)

Yellow (44%)

Brightness & Saturation Gradients

These gradients show how the Hex color FF5A8E changes by changing the brightness by 10 percent. The first figure shows a shift by +10% for each color and the second figure -10%.

Similar to the brightness gradients but the following saturation gradients show a change of the Hex color FF5A8E by changing the saturation by 10% instead.

 FF5A8E

 FF5A8E

FFFFFF

 E03B75

 FF94C3

 C1125C

 FFB1DF

 A30045

 FFCEFC

 85002F

 FFECFF

 67001B

 4B0003

 2C0001

 000000

 FF5A8E

 FF5A8E

■ FF417D

■ FF749F

■ FF276B

■ FF8DB1

■ FF0E5A

■ FFA7C2

■ FF0050

■ FFC0D4

■ FFDAE5

■ FFF3F7

FFFFFF

Harmonies

Analogous

The Analogous color harmony consists of three colors that are next to each other on the color wheel.



E567C9



FF5A8E



F96855

Triad

The Triadic color harmony groups three colors that are evenly spaced from another and form a triangle on the color wheel.



FF5A8E



6BA62A



00A9FF

Complementary

The Complementary color scheme is a pair of colors which are on the opposite of each other on the color wheel.



FF5A8E



5AFFCB

Split Complementary

Split-complementary colors differ from the complementary color scheme. The scheme consists of three colors, the original color and two neighbors of the complement color.



00B0D9



FF5A8E



00AE62

Square

The Square scheme is like the rectangle color scheme, but the four colors are evenly spaced on the color wheel.



FF5A8E



A99700



00B29F



009AFF

Rectangle

The Rectangle color scheme consists of four colors that form a rectangle on the color wheel.



FF5A8E



E67833



00B29F



00ACF7

Sweetspot

The Sweet Spot groups the original color and five complimentary colors.



FF5A8E



FFCFDE



CB5AFF



80626B



000000



808080

Same Dimension

The Same Dimension uses a secret algorithm to generate beautiful new colors.



FF5A8E



FF3877



FF785A



807377



BF003C



400014

Inverse Universe

The Inverse Universe completely reimagines the original color for something new.



FF5A8E



FF3877



5AE1FF



807377



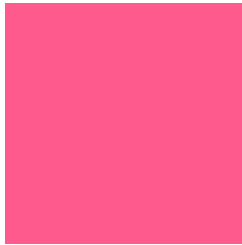
BF003C



400014

Previews

White Background



This preview shows how the Hex color FF5A8E looks on a white background.

Color Contrast Check

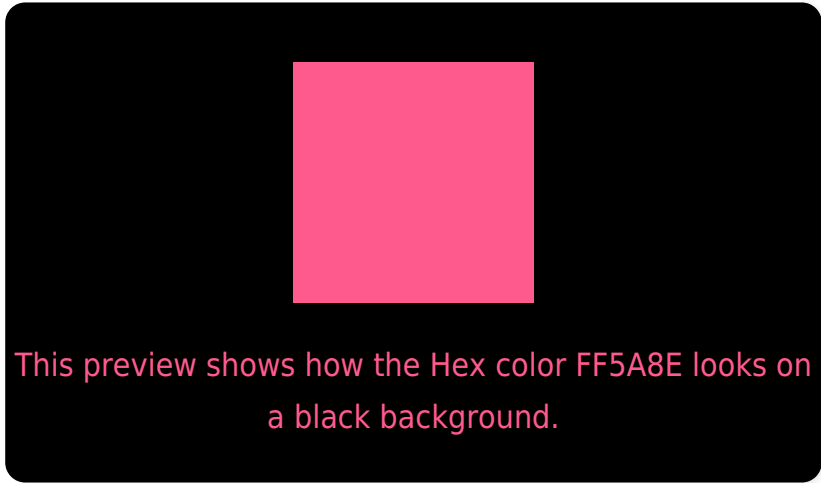
Large Text (above 18pt) WCAG AA × Fail

Any Text WCAG AA × Fail

Large Text (above 18pt) WCAG AAA × Fail

Any Text WCAG AAA × Fail

Black Background



Color Contrast Check

Large Text (above 18pt) WCAG AA ✓ Pass

Any Text WCAG AA ✓ Pass

Large Text (above 18pt) WCAG AAA ✓ Pass

Any Text WCAG AAA ✓ Pass

If you want to check with other color combinations, try the [Color Contrast Checker](#).

Hex FF5A8E Background



This preview shows how black text looks on a background with the Hex color FF5A8E.



This preview shows how white text looks on a background with the Hex color FF5A8E.

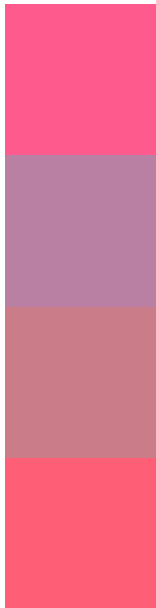
Color Blindness Simulation

Color vision deficiency is a very complex topic, and I could not describe the different causes any better than Wikipedia does, so if you want to learn more, you should check out their [article about color blindness](#).

Dichromacy



Trichromacy



Original Color
FF5A8E

Protanomaly
B980A4

Deuteranomaly
CA7D89

Tritanomaly
FE5F76

Monochromacy



Original Color
FF5A8E

Achromatopsia
919191

Achromatomaly
B97D90

CSS Examples

Text

The CSS property to change the color of the text to Hex FF5A8E is called "color". The color property can be set on classes, ids or directly on the HTML element.

This example shows how text in the color #FF5A8E looks like.

```
.text, #text, p{  
    color:#FF5A8E  
}
```

If you want to add a text shadow in that color use the text-shadow property, you can generate a text shadow directly with our [CSS Text Shadow Generator](#).

Here you see how black text with a 4 pixel #FF5A8E colored shadow looks like.

```
.shadow{ text-shadow: 4px 4px 2px #FF5A8E
}
```

Border

The CSS property to change the border of an element to Hex FF5A8E is called "border". The border property can be set on classes, ids or directly on the HTML element.

This example shows the color as border, it can be applied via the CSS property "border" or "border-color".

```
.border, #border, table{ border:4px solid
#FF5A8E }
```

If only the border color should be changed use the property `border-color`.

```
.border{ border-color:#FF5A8E }
```

If you want to add a box shadow in that color use:

Here you see how a box with a 4 pixel #FF5A8E colored shadow looks like.

```
.boxshadow{ -moz-box-shadow:4px 4px 4px  
4px #FF5A8E; -webkit-box-shadow:4px 4px  
4px 4px #FF5A8E; box-shadow:4px 4px 4px  
4px #FF5A8E }
```

Background

The CSS property to change the background color of an element to Hex FF5A8E is called "background". The background property can be set on classes, ids or directly on the HTML element.

```
.background, #background, body{  
background:#FF5A8E }
```

If only the background color should be changed can be used:

```
.background{ background-color:#FF5A8E }
```

This example shows the color as background, it is applied via the CSS property "background".

To optimize and compress your CSS code, you can use our [online CSS compressor and optimizer](#) based on csstidy. If you want to create a linear or radial gradient as background or border, check our [CSS Gradient Generator](#).

Hey! You found this booklet interesting? Support Converting Colors with the new Membership Option!

The pro membership hides all ads, plus gives you double the colors in the color bucket, and more awesome pro features!

[Learn more, Memberships starting at \\$2.50/m!](#)

**Follow me
on Twitter!**

@ConvertingColor