

# Converting Colors

Hex(FF5B81)

Have a look what the booklet for  
Hex(FF5B81) contains.

<b>Hex(FF5B81)</b> .....	3
<i><b>Conversions</b></i> .....	4
<i><b>Details</b></i> .....	6
<i><b>Harmonies</b></i> .....	11
<i><b>Previews</b></i> .....	23
<i><b>Color Blindness Simulation</b></i> .....	26
<i><b>CSS Examples</b></i> .....	29

# **Color**

**Hex(F5B81)**

# Conversions

## Conversions Part 1

Format	Color
Hex	FF5B81
RGB	255, 91, 129
RGB Percent	100%, 36%, 51%
CMY	0.0000, 0.6431, 0.4941
CMYK	0.00, 0.64, 0.49, 0.00
HSL	346°, 100%, 68%
HSV	346°, 64%, 100%
XYZ	48.9435, 30.3272, 24.0430
YIQ	144.3680, 85.5460, 46.5860

# Conversions

## Conversions Part 2

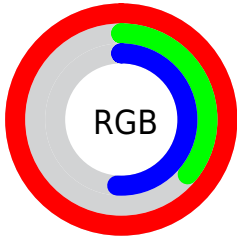
<b>Format</b>	<b>Color</b>
<b>R<sub>YB</sub></b>	255, 91, 129
Decimal	16735105
CIE <sub>Lab</sub>	61.94, 64.84, 13.49
CIE <sub>LCh</sub>	62, 66.223, 11.751
Yxy	30.3272, 0.4737, 0.2935
Android (android.graphics.Color)	4294925185 (0xFFFF5B81)
YUV	144.3680, -7.5764, 97.0243
Hunter-Lab	55.0701, 62.2692, 12.6637

# Details

The Hex color **FF5B81** is a light color, and the websafe version is hex **FF6699**. The color can be described as light muted rose. A complement of this color would be **5BFFD9**, and the grayscale version is **909090**.

A 20% lighter version of the original color is **FF95B6**, and **C11650** is the 20% darker color. If you saturate the color by 10%, you get **FF426D**, and if you desaturate by 10%, it is **FF7595**.

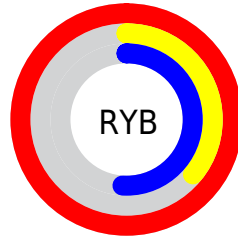
# Distribution



Red (100%)

Green (36%)

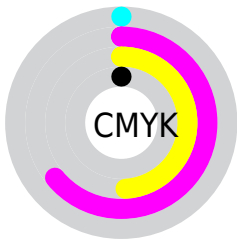
Blue (51%)



Red (100%)

Yellow (36%)

Blue (51%)

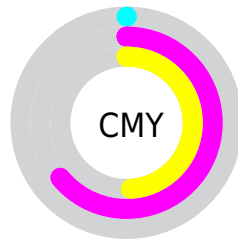


Cyan (0%)

Magenta (64%)

Yellow (49%)

Black (0%)



Cyan (0%)

Magenta (64%)

Yellow (49%)

# Brightness & Saturation Gradients

These gradients show how the Hex color FF5B81 changes by changing the brightness by 10 percent. The first figure shows a shift by +10% for each color and the second figure -10%.

Similar to the brightness gradients but the following saturation gradients show a change of the Hex color FF5B81 by changing the saturation by 10% instead.



 FF5B81

 FF5B81

FFFFFF

 E03D68

 FF95B6

 C11650

 FFB2D1

 A2003A

 FFCFED

 840024

 FFECCF

 660010

 490003

 2B0001

 000000

 FF5B81

 FF5B81

 FF426D

 FF7595

 FF285A

 FF8EA8

 FF0F46

 FFA8BC

 FF003B

 FFC1CF

 FFDBE3

 FFF4F7

FFFFFF

# Harmonies

## Analogous

The Analogous color harmony consists of three colors that are next to each other on the color wheel.



ED62BC



FF5B81



F36D4A

# Triad

The Triadic color harmony groups three colors that are evenly spaced from another and form a triangle on the color wheel.



FF5B81



5BA836



00A6FF

# Complementary

The Complementary color scheme is a pair of colors which are on the opposite of each other on the color wheel.



FF5B81



5BFFD9

# Split Complementary

Split-complementary colors differ from the complementary color scheme. The scheme consists of three colors, the original color and two neighbors of the complement color.



00AFE3



FF5B81



00AF6F

# Square

The Square scheme is like the rectangle color scheme, but the four colors are evenly spaced on the color wheel.



FF5B81



9D9A02



00B1AC



3E95FF

# Rectangle

The Rectangle color scheme consists of four colors that form a rectangle on the color wheel.



FF5B81



DD7D29



00B1AC



00AAFD



# Sweetspot

The Sweet Spot groups the original color and five complimentary colors.



FF5B81



FFCFDA



D95BFF



806269



000000



808080



# Same Dimension

The Same Dimension uses a secret algorithm to generate beautiful new colors.



FF5B81



FF3B68



FF875B



807376



BF002C



40000F



# Inverse Universe

The Inverse Universe completely reimagines the original color for something new.



FF5B81



FF3B68



5BD3FF



807376



BF002C



40000F



# Previews

## White Background



This preview shows how the Hex color FF5B81 looks on a white background.

## Color Contrast Check

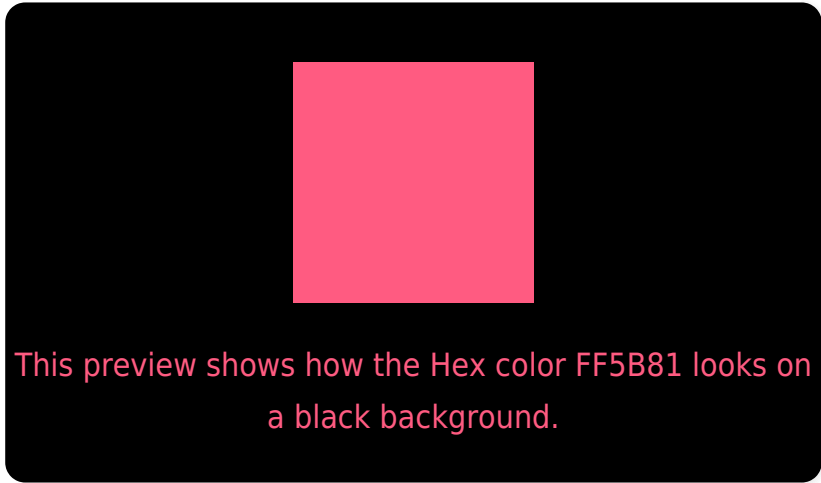
Large Text (above 18pt) WCAG AA × Fail

Any Text WCAG AA × Fail

Large Text (above 18pt) WCAG AAA × Fail

Any Text WCAG AAA × Fail

# Black Background



## Color Contrast Check

Large Text (above 18pt) WCAG AA ✓ Pass

Any Text WCAG AA ✓ Pass

Large Text (above 18pt) WCAG AAA ✓ Pass

Any Text WCAG AAA ✓ Pass

If you want to check with other color combinations, try the [Color Contrast Checker](#).



## Hex FF5B81 Background



This preview shows how black text looks on a background with the Hex color FF5B81.



This preview shows how white text looks on a background with the Hex color FF5B81.

# Color Blindness Simulation

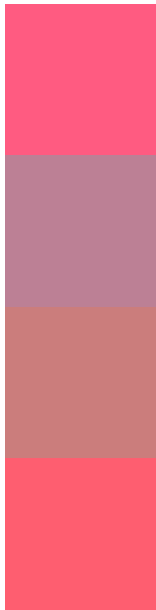
Color vision deficiency is a very complex topic, and I could not describe the different causes any better than Wikipedia does, so if you want to learn more, you should check out their [article about color blindness](#).

## Dichromacy





# Trichromacy



**Original Color**  
FF5B81

**Protanomaly**  
BC8095

**Deuteranomaly**  
CB7D7C

**Tritanomaly**  
FE5E70

# Monochromacy



**Original Color**  
FF5B81

**Achromatopsia**  
909090

**Achromatomaly**  
B87D8B

# CSS Examples

## Text

The CSS property to change the color of the text to Hex FF5B81 is called "color". The color property can be set on classes, ids or directly on the HTML element.

This example shows how text in the color #FF5B81 looks like.

```
.text, #text, p{  
    color:#FF5B81  
}
```

If you want to add a text shadow in that color use the text-shadow property, you can generate a text shadow directly with our [CSS Text Shadow Generator](#).

Here you see how black text with a 4 pixel #FF5B81 colored shadow looks like.

```
.shadow{ text-shadow: 4px 4px 2px #FF5B81
}
```

## Border

The CSS property to change the border of an element to Hex FF5B81 is called "border". The border property can be set on classes, ids or directly on the HTML element.

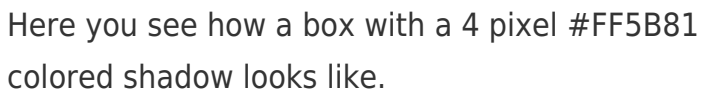
This example shows the color as border, it can be applied via the CSS property "border" or "border-color".

```
.border, #border, table{ border:4px solid
#FF5B81 }
```

If only the border color should be changed use the property `border-color`.

```
.border{ border-color:#FF5B81 }
```

If you want to add a box shadow in that color use:



Here you see how a box with a 4 pixel #FF5B81 colored shadow looks like.

```
.boxshadow{ -moz-box-shadow:4px 4px 4px  
4px #FF5B81; -webkit-box-shadow:4px 4px  
4px 4px #FF5B81; box-shadow:4px 4px 4px  
4px #FF5B81 }
```

# Background

The CSS property to change the background color of an element to Hex FF5B81 is called "background". The background property can be set on classes, ids or directly on the HTML element.

```
.background, #background, body{  
background:#FF5B81 }
```

If only the background color should be changed can be used:

```
.background{ background-color:#FF5B81 }
```

This example shows the color as background, it is applied via the CSS property "background".

To optimize and compress your CSS code, you can use our [online CSS compressor and optimizer](#) based on csstidy. If you want to create a linear or radial gradient as background or border, check our [CSS Gradient Generator](#).



Hey! You found this booklet interesting? Support Converting Colors with the new Membership Option!

The pro membership hides all ads, plus gives you double the colors in the color bucket, and more awesome pro features!

**[Learn more, Memberships starting at \\$2.50/m!](#)**

**Follow me  
on Twitter!**

@ConvertingColor