

Converting Colors

Hex(FF5C84)

Have a look what the booklet for
Hex(FF5C84) contains.

| | |
|--|----|
| Hex(FF5C84) | 3 |
| <i>Conversions</i> | 4 |
| <i>Details</i> | 6 |
| <i>Harmonies</i> | 11 |
| <i>Previews</i> | 23 |
| <i>Color Blindness Simulation</i> | 26 |
| <i>CSS Examples</i> | 29 |

Color

Hex(F5C84)

Conversions

Conversions Part 1

| Format | Color |
|-------------|----------------------------|
| Hex | FF5C84 |
| RGB | 255, 92, 132 |
| RGB Percent | 100%, 36%, 52% |
| CMY | 0.0000, 0.6392, 0.4824 |
| CMYK | 0.00, 0.64, 0.48, 0.00 |
| HSL | 345°, 100%, 68% |
| HSV | 345°, 64%, 100% |
| XYZ | 49.2320, 30.5802, 25.1376 |
| YIQ | 145.2970, 84.3080, 46.9960 |

Conversions

Conversions Part 2

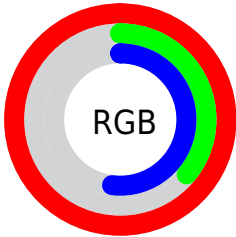
| Format | Color |
|-------------------------------------|-------------------------------|
| R_{YB} | 255, 92, 132 |
| Decimal | 16735364 |
| CIE Lab | 62.15, 64.69, 12.05 |
| CIE LCh | 62, 65.802, 10.553 |
| Yxy | 30.5802, 0.4691, 0.2914 |
| Android (android.graphics.Color) | 4294925444 (0xFFFF5C84) |
| YUV | 145.2970, -6.5554, 96.2095 |
| Hunter-Lab | 55.2994, 62.1412, 11.7580 |

Details

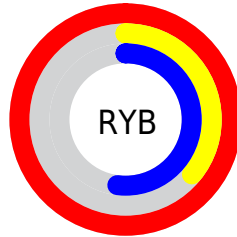
The Hex color **FF5C84** is a light color, and the websafe version is hex **FF6699**. The color can be described as light muted rose. A complement of this color would be **5CFFD7**, and the grayscale version is **919191**.

A 20% lighter version of the original color is **FF96B9**, and **C11853** is the 20% darker color. If you saturate the color by 10%, you get **FF4371**, and if you desaturate by 10%, it is **FF7697**.

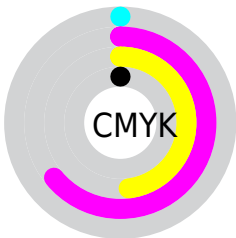
Distribution



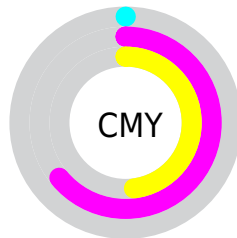
- Red (100%)
- Green (36%)
- Blue (52%)



- Red (100%)
- Yellow (36%)
- Blue (52%)



- Cyan (0%)
- Magenta (64%)
- Yellow (48%)
- Black (0%)



- Cyan (0%)
- Magenta (64%)
- Yellow (48%)

Brightness & Saturation Gradients

These gradients show how the Hex color FF5C84 changes by changing the brightness by 10 percent. The first figure shows a shift by +10% for each color and the second figure -10%.

Similar to the brightness gradients but the following saturation gradients show a change of the Hex color FF5C84 by changing the saturation by 10% instead.

 FF5C84

 FF5C84

FFFFFF

 E03E6B

 FF96B9

 C11853

 FFB3D4

 A2003C

 FFD0F1

 840027

 FFEDFF

 660013

 4A0002

 2B0001

 000000

 FF5C84

 FF5C84

■ FF4371

■ FF7697

■ FF295E

■ FF8FAA

■ FF104A

■ FFA9BE

■ FF003F

■ FFC2D1

■ FFDCE4

■ FFF5F7

FFFFFF

Harmonies

Analogous

The Analogous color harmony consists of three colors that are next to each other on the color wheel.



EB64BE



FF5C84



F46D4D

Triad

The Triadic color harmony groups three colors that are evenly spaced from another and form a triangle on the color wheel.



FF5C84



5FA835



00A7FF

Complementary

The Complementary color scheme is a pair of colors which are on the opposite of each other on the color wheel.



FF5C84



5CFFD7

Split Complementary

Split-complementary colors differ from the complementary color scheme. The scheme consists of three colors, the original color and two neighbors of the complement color.



00AFE1



FF5C84



00AF6D

Square

The Square scheme is like the rectangle color scheme, but the four colors are evenly spaced on the color wheel.



FF5C84



A09A05



00B2AA



3796FF

Rectangle

The Rectangle color scheme consists of four colors that form a rectangle on the color wheel.



FF5C84



DF7D2D



00B2AA



00ABFB

Sweetspot

The Sweet Spot groups the original color and five complimentary colors.



FF5C84



FFCFDA



D65CFF



806269



000000



808080

Same Dimension

The Same Dimension uses a secret algorithm to generate beautiful new colors.



FF5C84



FF3B6B



FF855C



807376



BF002F



400010

Inverse Universe

The Inverse Universe completely reimagines the original color for something new.



FF5C84



FF3B6B



5CD6FF



807376



BF002F



400010

Previews

White Background



This preview shows how the Hex color FF5C84 looks on a white background.

Color Contrast Check

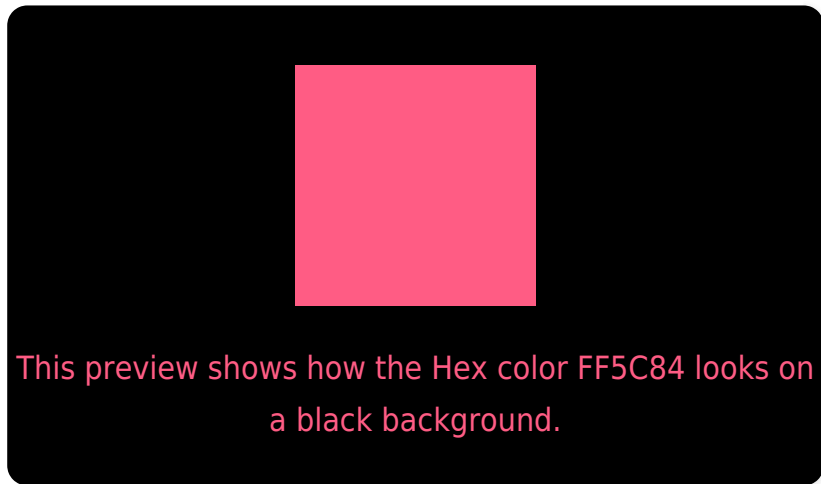
Large Text (above 18pt) WCAG AA × Fail

Any Text WCAG AA × Fail

Large Text (above 18pt) WCAG AAA × Fail

Any Text WCAG AAA × Fail

Black Background



Color Contrast Check

Large Text (above 18pt) WCAG AA ✓ Pass

Any Text WCAG AA ✓ Pass

Large Text (above 18pt) WCAG AAA ✓ Pass

Any Text WCAG AAA ✓ Pass

If you want to check with other color combinations, try the [Color Contrast Checker](#).

Hex FF5C84 Background



This preview shows how black text looks on a background with the Hex color FF5C84.



This preview shows how white text looks on a background with the Hex color FF5C84.

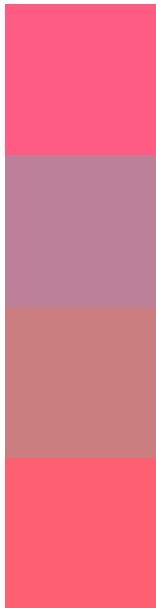
Color Blindness Simulation

Color vision deficiency is a very complex topic, and I could not describe the different causes any better than Wikipedia does, so if you want to learn more, you should check out their [article about color blindness](#).

Dichromacy



Trichromacy



Original Color
FF5C84

Protanomaly
BC8198

Deuteranomaly
CB7E7F

Tritanomaly
FE6072

Monochromacy



Original Color
FF5C84

Achromatopsia
919191

Achromatomaly
B97E8C

CSS Examples

Text

The CSS property to change the color of the text to Hex FF5C84 is called "color". The color property can be set on classes, ids or directly on the HTML element.

This example shows how text in the color #FF5C84 looks like.

```
.text, #text, p{  
    color:#FF5C84  
}
```

If you want to add a text shadow in that color use the text-shadow property, you can generate a text shadow directly with our [CSS Text Shadow Generator](#).

Here you see how black text with a 4 pixel #FF5C84 colored shadow looks like.

```
.shadow{ text-shadow: 4px 4px 2px #FF5C84
}
```

Border

The CSS property to change the border of an element to Hex FF5C84 is called "border". The border property can be set on classes, ids or directly on the HTML element.

This example shows the color as border, it can be applied via the CSS property "border" or "border-color".

```
.border, #border, table{ border:4px solid
#FF5C84 }
```

If only the border color should be changed use the property `border-color`.

```
.border{ border-color:#FF5C84 }
```

If you want to add a box shadow in that color use:

Here you see how a box with a 4 pixel #FF5C84 colored shadow looks like.

```
.boxshadow{ -moz-box-shadow:4px 4px 4px  
4px #FF5C84; -webkit-box-shadow:4px 4px  
4px 4px #FF5C84; box-shadow:4px 4px 4px  
4px #FF5C84 }
```

Background

The CSS property to change the background color of an element to Hex FF5C84 is called "background". The background property can be set on classes, ids or directly on the HTML element.

```
.background, #background, body{  
background:#FF5C84 }
```

If only the background color should be changed can be used:

```
.background{ background-color:#FF5C84 }
```

This example shows the color as background, it is applied via the CSS property "background".

To optimize and compress your CSS code, you can use our [online CSS compressor and optimizer](#) based on csstidy. If you want to create a linear or radial gradient as background or border, check our [CSS Gradient Generator](#).

Hey! You found this booklet interesting? Support Converting Colors with the new Membership Option!

The pro membership hides all ads, plus gives you double the colors in the color bucket, and more awesome pro features!

[Learn more, Memberships starting at \\$2.50/m!](#)

**Follow me
on Twitter!**

@ConvertingColor