

Converting Colors

Hex(FF5D92)

Have a look what the booklet for
Hex(FF5D92) contains.

Hex(FF5D92)	3
<i>Conversions</i>	4
<i>Details</i>	6
<i>Harmonies</i>	11
<i>Previews</i>	23
<i>Color Blindness Simulation</i>	26
<i>CSS Examples</i>	29

Color

Hex(F5D92)

Conversions

Conversions Part 1

Format	Color
Hex	FF5D92
RGB	255, 93, 146
RGB Percent	100%, 36%, 57%
CMY	0.0000, 0.6353, 0.4275
CMYK	0.00, 0.64, 0.43, 0.00
HSL	340°, 100%, 68%
HSV	340°, 64%, 100%
XYZ	50.3427, 31.1640, 30.5560
YIQ	147.4800, 79.5390, 50.8270

Conversions

Conversions Part 2

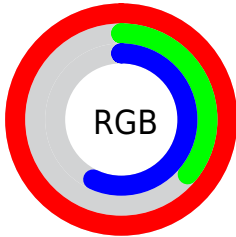
Format	Color
R _Y B	255, 93, 146
Decimal	16735634
CIE Lab	62.65, 65.56, 4.66
CIE LCh	63, 65.722, 4.062
Yxy	31.1640, 0.4492, 0.2781
Android (android.graphics.Color)	4294925714 (0xFFFF5D92)
YUV	147.4800, -0.7296, 94.2950
Hunter-Lab	55.8247, 63.2777, 6.6246

Details

The Hex color **FF5D92** is a light color, and the websafe version is hex **FF6699**. The color can be described as light muted rose. A complement of this color would be **5DFFCA**, and the grayscale version is **939393**.

A 20% lighter version of the original color is **FF97C8**, and **C11960** is the 20% darker color. If you saturate the color by 10%, you get **FF4381**, and if you desaturate by 10%, it is **FF77A3**.

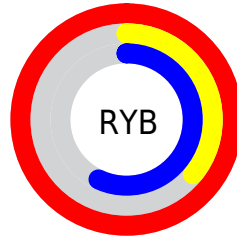
Distribution



Red (100%)

Green (36%)

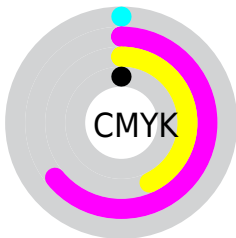
Blue (57%)



Red (100%)

Yellow (36%)

Blue (57%)

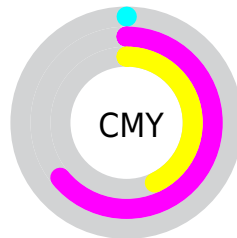


Cyan (0%)

Magenta (64%)

Yellow (43%)

Black (0%)



Cyan (0%)

Magenta (64%)

Yellow (43%)

Brightness & Saturation Gradients

These gradients show how the Hex color FF5D92 changes by changing the brightness by 10 percent. The first figure shows a shift by +10% for each color and the second figure -10%.

Similar to the brightness gradients but the following saturation gradients show a change of the Hex color FF5D92 by changing the saturation by 10% instead.

 FF5D92

 FF5D92

FFFFFF

 E03F78

 FF97C8

 C11960

 FFB4E4

 A30048

 FFD1FF

 850032

 FFEFFF

 68001E

 4C0002

 2E0002

 000000

 FF5D92

 FF5D92

 FF4381

 FF77A3

 FF2A70

 FF90B4

 FF105F

 FFAAC5

 FF0053

 FFC3D7

 FFDDE8

 FFF6F9

FFFFFF

Harmonies

Analogous

The Analogous color harmony consists of three colors that are next to each other on the color wheel.



E46ACC



FF5D92



FA6959

Triad

The Triadic color harmony groups three colors that are evenly spaced from another and form a triangle on the color wheel.



FF5D92



71A72C



00ABFF

Complementary

The Complementary color scheme is a pair of colors which are on the opposite of each other on the color wheel.



FF5D92



5DFFCA

Split Complementary

Split-complementary colors differ from the complementary color scheme. The scheme consists of three colors, the original color and two neighbors of the complement color.



00B2D8



FF5D92



00AF62

Square

The Square scheme is like the rectangle color scheme, but the four colors are evenly spaced on the color wheel.



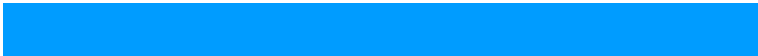
FF5D92



AD9706



00B39E



009CFF

Rectangle

The Rectangle color scheme consists of four colors that form a rectangle on the color wheel.



FF5D92



E87938



00B39E



00AEF5

Sweetspot

The Sweet Spot groups the original color and five complimentary colors.



FF5D92



FFCFDE



C95DFF



80626C



000000



808080

Same Dimension

The Same Dimension uses a secret algorithm to generate beautiful new colors.



FF5D92



FF3D7D



FF785D



807377



BF003F



400015

Inverse Universe

The Inverse Universe completely reimagines the original color for something new.



FF5D92



FF3D7D



5DE4FF



807377



BF003F



400015

Previews

White Background



This preview shows how the Hex color FF5D92 looks on a white background.

Color Contrast Check

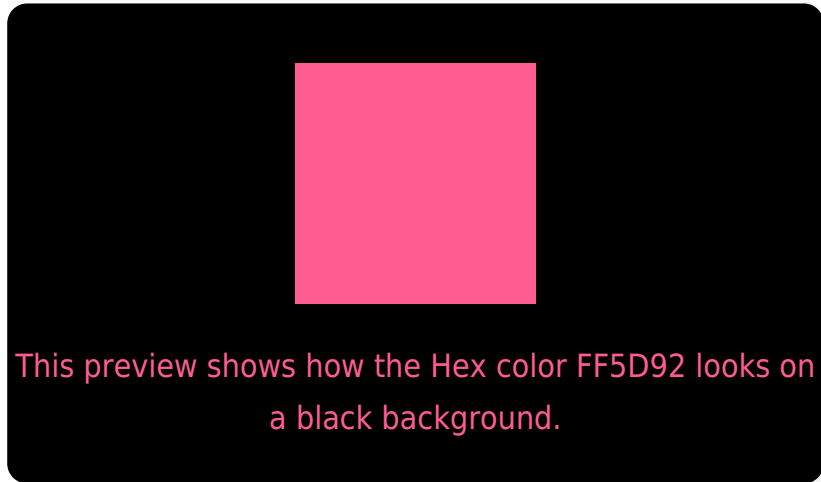
Large Text (above 18pt) WCAG AA × Fail

Any Text WCAG AA × Fail

Large Text (above 18pt) WCAG AAA × Fail

Any Text WCAG AAA × Fail

Black Background



Color Contrast Check

Large Text (above 18pt) WCAG AA ✓ Pass

Any Text WCAG AA ✓ Pass

Large Text (above 18pt) WCAG AAA ✓ Pass

Any Text WCAG AAA ✓ Pass

If you want to check with other color combinations, try the [Color Contrast Checker](#).

Hex FF5D92 Background



This preview shows how black text looks on a background with the Hex color FF5D92.



This preview shows how white text looks on a background with the Hex color FF5D92.

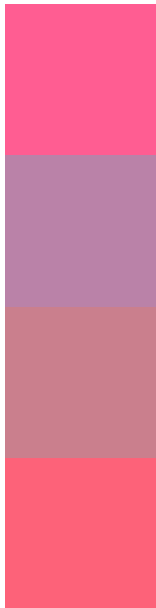
Color Blindness Simulation

Color vision deficiency is a very complex topic, and I could not describe the different causes any better than Wikipedia does, so if you want to learn more, you should check out their [article about color blindness](#).

Dichromacy



Trichromacy



Original Color
FF5D92

Protanomaly
BA82A8

Deuteranomaly
CA7F8D

Tritanomaly
FD6279

Monochromacy



Original Color
FF5D92

Achromatopsia
939393

Achromatomaly
BA7F93

CSS Examples

Text

The CSS property to change the color of the text to Hex FF5D92 is called "color". The color property can be set on classes, ids or directly on the HTML element.

This example shows how text in the color #FF5D92 looks like.

```
.text, #text, p{  
    color:#FF5D92  
}
```

If you want to add a text shadow in that color use the text-shadow property, you can generate a text shadow directly with our [CSS Text Shadow Generator](#).

Here you see how black text with a 4 pixel #FF5D92 colored shadow looks like.

```
.shadow{ text-shadow: 4px 4px 2px #FF5D92
}
```

Border

The CSS property to change the border of an element to Hex FF5D92 is called "border". The border property can be set on classes, ids or directly on the HTML element.

This example shows the color as border, it can be applied via the CSS property "border" or "border-color".

```
.border, #border, table{ border:4px solid
#FF5D92 }
```

If only the border color should be changed use the property `border-color`.

```
.border{ border-color:#FF5D92 }
```

If you want to add a box shadow in that color use:

Here you see how a box with a 4 pixel #FF5D92 colored shadow looks like.

```
.boxshadow{ -moz-box-shadow:4px 4px 4px  
4px #FF5D92; -webkit-box-shadow:4px 4px  
4px 4px #FF5D92; box-shadow:4px 4px 4px  
4px #FF5D92 }
```

Background

The CSS property to change the background color of an element to Hex FF5D92 is called "background". The background property can be set on classes, ids or directly on the HTML element.

```
.background, #background, body{  
background:#FF5D92 }
```

If only the background color should be changed can be used:

```
.background{ background-color:#FF5D92 }
```

This example shows the color as background, it is applied via the CSS property "background".

To optimize and compress your CSS code, you can use our [online CSS compressor and optimizer](#) based on csstidy. If you want to create a linear or radial gradient as background or border, check our [CSS Gradient Generator](#).

Hey! You found this booklet interesting? Support Converting Colors with the new Membership Option!

The pro membership hides all ads, plus gives you double the colors in the color bucket, and more awesome pro features!

[Learn more, Memberships starting at \\$2.50/m!](#)

**Follow me
on Twitter!**

@ConvertingColor