

Converting Colors

Hex(FF5E82)

Have a look what the booklet for
Hex(FF5E82) contains.

Hex(FF5E82)	3
<i>Conversions</i>	4
<i>Details</i>	6
<i>Harmonies</i>	11
<i>Previews</i>	23
<i>Color Blindness Simulation</i>	26
<i>CSS Examples</i>	29

Color

Hex(F5E82)

Conversions

Conversions Part 1

Format	Color
Hex	FF5E82
RGB	255, 94, 130
RGB Percent	100%, 37%, 51%
CMY	0.0000, 0.6314, 0.4902
CMYK	0.00, 0.63, 0.49, 0.00
HSL	347°, 100%, 68%
HSV	347°, 63%, 100%
XYZ	49.2720, 30.8771, 24.4821
YIQ	146.2430, 84.4000, 45.3280

Conversions

Conversions Part 2

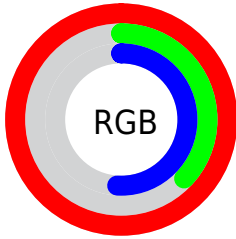
Format	Color
R _Y B	255, 94, 130
Decimal	16735874
CIE Lab	62.40, 63.71, 13.56
CIE LCh	62, 65.139, 12.017
Yxy	30.8771, 0.4709, 0.2951
Android (android.graphics.Color)	4294925954 (0xFFFF5E82)
YUV	146.2430, -8.0078, 95.3799
Hunter-Lab	55.5672, 61.0352, 12.7748

Details

The Hex color **FF5E82** is a light color, and the websafe version is hex **FF6699**. The color can be described as light muted rose. A complement of this color would be **5EFFDB**, and the grayscale version is **929292**.

A 20% lighter version of the original color is **FF97B7**, and **C11C51** is the 20% darker color. If you saturate the color by 10%, you get **FF456E**, and if you desaturate by 10%, it is **FF7896**.

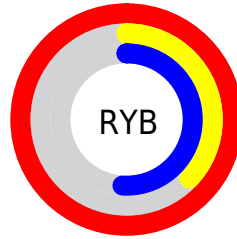
Distribution



Red (100%)

Green (37%)

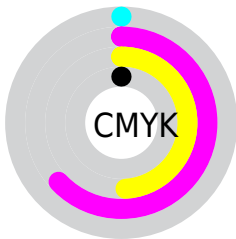
Blue (51%)



Red (100%)

Yellow (37%)

Blue (51%)

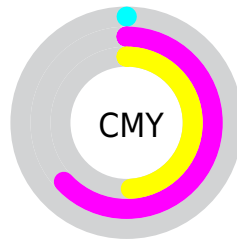


Cyan (0%)

Magenta (63%)

Yellow (49%)

Black (0%)



Cyan (0%)

Magenta (63%)

Yellow (49%)

Brightness & Saturation Gradients

These gradients show how the Hex color FF5E82 changes by changing the brightness by 10 percent. The first figure shows a shift by +10% for each color and the second figure -10%.

Similar to the brightness gradients but the following saturation gradients show a change of the Hex color FF5E82 by changing the saturation by 10% instead.

 FF5E82

 FF5E82

FFFFFF

 E04069

 FF97B7

 C11C51

 FFB4D2

 A2003A

 FFD1EE

 840025

 FFEFFF

 660011

 4A0002

 2B0001

 000000

 FF5E82

 FF5E82

 FF456E

 FF7896

 FF2B5A

 FF91AA

 FF1247

 FFABBD

 FF0039

 FFC4D1

 FFDEE5

 FFF7F9

FFFFFF

Harmonies

Analogous

The Analogous color harmony consists of three colors that are next to each other on the color wheel.



ED65BC



FF5E82



F36F4C

Triad

The Triadic color harmony groups three colors that are evenly spaced from another and form a triangle on the color wheel.



FF5E82



5DA93A



00A7FF

Complementary

The Complementary color scheme is a pair of colors which are on the opposite of each other on the color wheel.



FF5E82



5EFFDB

Split Complementary

Split-complementary colors differ from the complementary color scheme. The scheme consists of three colors, the original color and two neighbors of the complement color.



00B0E3



FF5E82



00B071

Square

The Square scheme is like the rectangle color scheme, but the four colors are evenly spaced on the color wheel.



FF5E82



9E9B0D



00B2AD



4696FF

Rectangle

The Rectangle color scheme consists of four colors that form a rectangle on the color wheel.



FF5E82



DD7F2C



00B2AD



00ABFD

Sweetspot

The Sweet Spot groups the original color and five complimentary colors.



FF5E82



FFCFD9



D95EFF



806269



000000



808080

Same Dimension

The Same Dimension uses a secret algorithm to generate beautiful new colors.



FF5E82



FF3D69



FF895E



807376



BF002B



40000E

Inverse Universe

The Inverse Universe completely reimagines the original color for something new.



FF5E82



FF3D69



5ED4FF



807376



BF002B



40000E

Previews

White Background



This preview shows how the Hex color FF5E82 looks on a white background.

Color Contrast Check

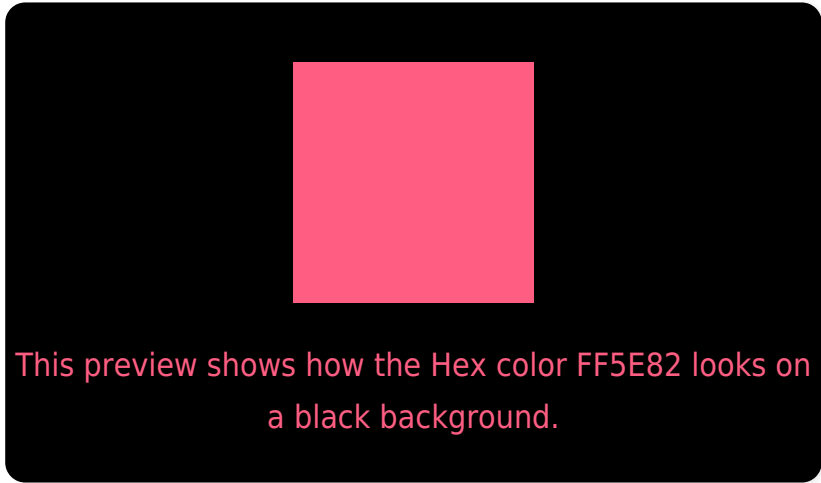
Large Text (above 18pt) WCAG AA × Fail

Any Text WCAG AA × Fail

Large Text (above 18pt) WCAG AAA × Fail

Any Text WCAG AAA × Fail

Black Background



Color Contrast Check

Large Text (above 18pt) WCAG AA ✓ Pass

Any Text WCAG AA ✓ Pass

Large Text (above 18pt) WCAG AAA ✓ Pass

Any Text WCAG AAA ✓ Pass

If you want to check with other color combinations, try the [Color Contrast Checker](#).

Hex FF5E82 Background



This preview shows how black text looks on a background with the Hex color FF5E82.

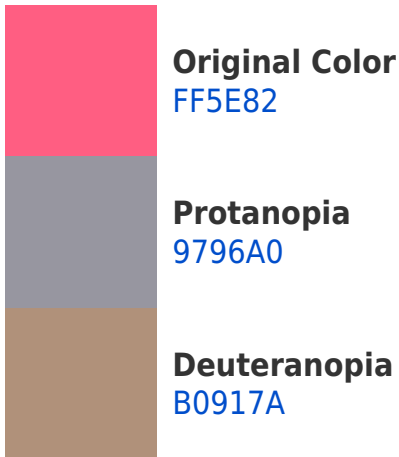


This preview shows how white text looks on a background with the Hex color FF5E82.

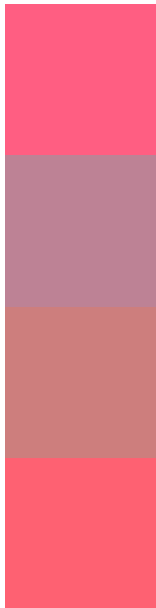
Color Blindness Simulation

Color vision deficiency is a very complex topic, and I could not describe the different causes any better than Wikipedia does, so if you want to learn more, you should check out their [article about color blindness](#).

Dichromacy



Trichromacy



Original Color
FF5E82

Protanomaly
BD8295

Deuteranomaly
CD7E7D

Tritanomaly
FE6172

Monochromacy



Original Color
FF5E82

Achromatopsia
929292

Achromatomaly
BA7F8C

CSS Examples

Text

The CSS property to change the color of the text to Hex FF5E82 is called "color". The color property can be set on classes, ids or directly on the HTML element.

This example shows how text in the color #FF5E82 looks like.

```
.text, #text, p{  
    color:#FF5E82  
}
```

If you want to add a text shadow in that color use the text-shadow property, you can generate a text shadow directly with our [CSS Text Shadow Generator](#).

Here you see how black text with a 4 pixel #FF5E82 colored shadow looks like.

```
.shadow{ text-shadow: 4px 4px 2px #FF5E82
}
```

Border

The CSS property to change the border of an element to Hex FF5E82 is called "border". The border property can be set on classes, ids or directly on the HTML element.

This example shows the color as border, it can be applied via the CSS property "border" or "border-color".

```
.border, #border, table{ border:4px solid
#FF5E82 }
```

If only the border color should be changed use the property `border-color`.

```
.border{ border-color:#FF5E82 }
```

If you want to add a box shadow in that color use:

Here you see how a box with a 4 pixel #FF5E82 colored shadow looks like.

```
.boxshadow{ -moz-box-shadow:4px 4px 4px  
4px #FF5E82; -webkit-box-shadow:4px 4px  
4px 4px #FF5E82; box-shadow:4px 4px 4px  
4px #FF5E82 }
```

Background

The CSS property to change the background color of an element to Hex FF5E82 is called "background". The background property can be set on classes, ids or directly on the HTML element.

```
.background, #background, body{  
background:#FF5E82 }
```

If only the background color should be changed can be used:

```
.background{ background-color:#FF5E82 }
```

This example shows the color as background, it is applied via the CSS property "background".

To optimize and compress your CSS code, you can use our [online CSS compressor and optimizer](#) based on csstidy. If you want to create a linear or radial gradient as background or border, check our [CSS Gradient Generator](#).

Hey! You found this booklet interesting? Support Converting Colors with the new Membership Option!

The pro membership hides all ads, plus gives you double the colors in the color bucket, and more awesome pro features!

[Learn more, Memberships starting at \\$2.50/m!](#)

**Follow me
on Twitter!**

@ConvertingColor