

# Converting Colors

Hex(FF5F79)

Have a look what the booklet for  
Hex(FF5F79) contains.

<b>Hex(FF5F79)</b> .....	3
<b><i>Conversions</i></b> .....	4
<b><i>Details</i></b> .....	6
<b><i>Harmonies</i></b> .....	11
<b><i>Previews</i></b> .....	23
<b><i>Color Blindness Simulation</i></b> .....	26
<b><i>CSS Examples</i></b> .....	29

# **Color**

**Hex(F5F79)**

# Conversions

## Conversions Part 1

Format	Color
Hex	FF5F79
RGB	255, 95, 121
RGB Percent	100%, 37%, 47%
CMY	0.0000, 0.6275, 0.5255
CMYK	0.00, 0.63, 0.53, 0.00
HSL	350°, 100%, 69%
HSV	350°, 63%, 100%
XYZ	48.7834, 30.8249, 21.4678
YIQ	145.8040, 87.0140, 42.0060

# Conversions

## Conversions Part 2

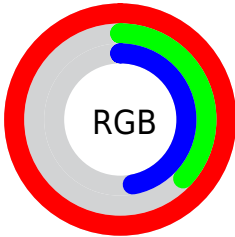
Format	Color
R <sub>Y</sub> B	255, 95, 121
Decimal	16736121
CIE Lab	62.36, 62.57, 18.70
CIE LCh	62, 65.304, 16.637
Yxy	30.8249, 0.4826, 0.3050
Android (android.graphics.Color)	4294926201 (0xFFFF5F79)
YUV	145.8040, -12.2284, 95.7649
Hunter-Lab	55.5202, 59.6807, 15.9387

# Details

The Hex color **FF5F79** is a light color, and the websafe version is hex **FF6666**. The color can be described as light muted rose. A complement of this color would be **5FFFE5**, and the grayscale version is **929292**.

A 20% lighter version of the original color is **FF98AD**, and **C11F49** is the 20% darker color. If you saturate the color by 10%, you get **FF4564**, and if you desaturate by 10%, it is **FF798E**.

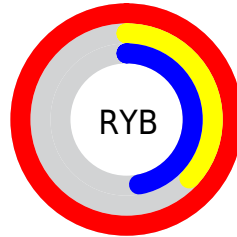
# Distribution



Red (100%)

Green (37%)

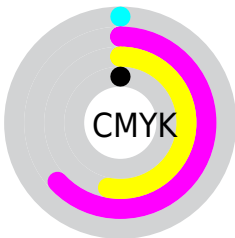
Blue (47%)



Red (100%)

Yellow (37%)

Blue (47%)

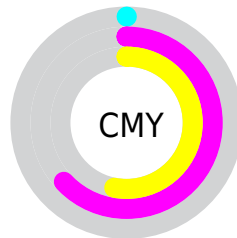


Cyan (0%)

Magenta (63%)

Yellow (53%)

Black (0%)



Cyan (0%)

Magenta (63%)

Yellow (53%)

# Brightness & Saturation Gradients

These gradients show how the Hex color FF5F79 changes by changing the brightness by 10 percent. The first figure shows a shift by +10% for each color and the second figure -10%.

Similar to the brightness gradients but the following saturation gradients show a change of the Hex color FF5F79 by changing the saturation by 10% instead.



 FF5F79

 FF5F79

FFFFFF

 E04160

 FF98AD

 C11F49

 FFB5C8

 A20033

 FFD2E4

 84001E

 FFF0FF

 660005

 490002

 2A0001

 000000

 FF5F79

 FF5F79

 FF4564

 FF798E

 FF2C4E

 FF92A4

 FF1239

 FFACB9

 FF0029

 FFC5CE

 FFDFE4

 FFF8F9

FFFFFF

# Harmonies

## Analogous

The Analogous color harmony consists of three colors that are next to each other on the color wheel.



F262B3



FF5F79



EF7244

# Triad

The Triadic color harmony groups three colors that are evenly spaced from another and form a triangle on the color wheel.



FF5F79



4FAA41



00A5FF

# Complementary

The Complementary color scheme is a pair of colors which are on the opposite of each other on the color wheel.



FF5F79



5FFFE5

# Split Complementary

Split-complementary colors differ from the complementary color scheme. The scheme consists of three colors, the original color and two neighbors of the complement color.



00AFE4



FF5F79



00B07A

# Square

The Square scheme is like the rectangle color scheme, but the four colors are evenly spaced on the color wheel.



FF5F79



959E11



00B2B6



6092FF

# Rectangle

The Rectangle color scheme consists of four colors that form a rectangle on the color wheel.



FF5F79



D78325



00B2B6



00A9FF



# Sweetspot

The Sweet Spot groups the original color and five complimentary colors.



FF5F79



FFCFD6



E45FFF



806267



000000



808080



# Same Dimension

The Same Dimension uses a secret algorithm to generate beautiful new colors.



FF5F79



FF405F



FF945F



807375



BF001F



40000A



# Inverse Universe

The Inverse Universe completely reimagines the original color for something new.



FF5F79



FF405F



5FCAFF



807375



BF001F



40000A



# Previews

## White Background



This preview shows how the Hex color FF5F79 looks on a white background.

## Color Contrast Check

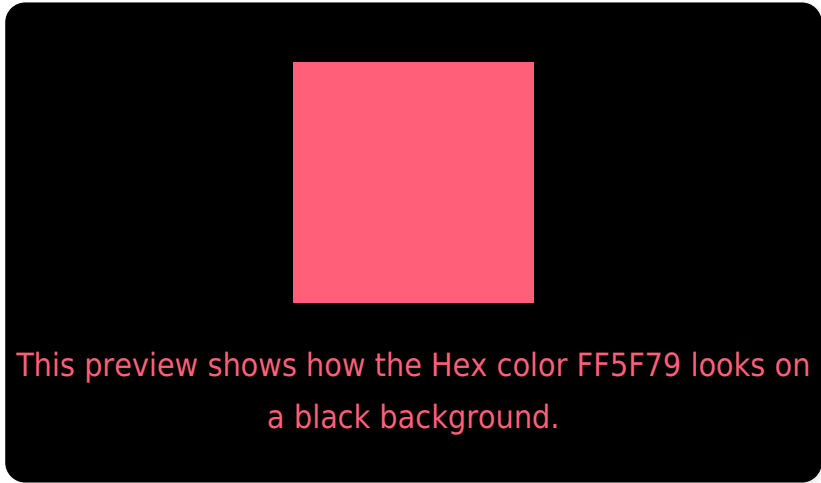
Large Text (above 18pt) WCAG AA × Fail

Any Text WCAG AA × Fail

Large Text (above 18pt) WCAG AAA × Fail

Any Text WCAG AAA × Fail

# Black Background



## Color Contrast Check

Large Text (above 18pt) WCAG AA ✓ Pass

Any Text WCAG AA ✓ Pass

Large Text (above 18pt) WCAG AAA ✓ Pass

Any Text WCAG AAA ✓ Pass

If you want to check with other color combinations, try the [Color Contrast Checker](#).



## Hex FF5F79 Background



This preview shows how black text looks on a background with the Hex color FF5F79.

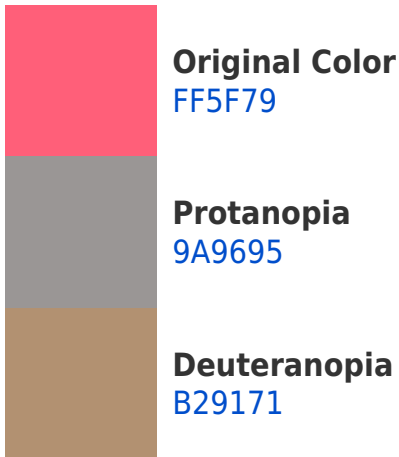


This preview shows how white text looks on a background with the Hex color FF5F79.

# Color Blindness Simulation

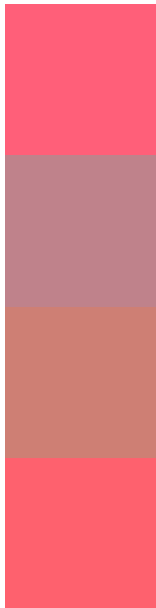
Color vision deficiency is a very complex topic, and I could not describe the different causes any better than Wikipedia does, so if you want to learn more, you should check out their [article about color blindness](#).

## Dichromacy





# Trichromacy



**Original Color**  
FF5F79

**Protanomaly**  
BF828B

**Deuteranomaly**  
CE7F74

**Tritanomaly**  
FE616E

# Monochromacy



**Original Color**  
FF5F79

**Achromatopsia**  
929292

**Achromatomaly**  
BA7F89

# CSS Examples

## Text

The CSS property to change the color of the text to Hex FF5F79 is called "color". The color property can be set on classes, ids or directly on the HTML element.

This example shows how text in the color #FF5F79 looks like.

```
.text, #text, p{  
    color:#FF5F79  
}
```

If you want to add a text shadow in that color use the text-shadow property, you can generate a text shadow directly with our [CSS Text Shadow Generator](#).

Here you see how black text with a 4 pixel #FF5F79 colored shadow looks like.

```
.shadow{ text-shadow: 4px 4px 2px #FF5F79
}
```

## Border

The CSS property to change the border of an element to Hex FF5F79 is called "border". The border property can be set on classes, ids or directly on the HTML element.

This example shows the color as border, it can be applied via the CSS property "border" or "border-color".

```
.border, #border, table{ border:4px solid
#FF5F79 }
```

If only the border color should be changed use the property `border-color`.

```
.border{ border-color:#FF5F79 }
```

If you want to add a box shadow in that color use:

Here you see how a box with a 4 pixel #FF5F79 colored shadow looks like.

```
.boxshadow{ -moz-box-shadow:4px 4px 4px  
4px #FF5F79; -webkit-box-shadow:4px 4px  
4px 4px #FF5F79; box-shadow:4px 4px 4px  
4px #FF5F79 }
```

# Background

The CSS property to change the background color of an element to Hex FF5F79 is called "background". The background property can be set on classes, ids or directly on the HTML element.

```
.background, #background, body{  
background:#FF5F79 }
```

If only the background color should be changed can be used:

```
.background{ background-color:#FF5F79 }
```

This example shows the color as background, it is applied via the CSS property "background".

To optimize and compress your CSS code, you can use our [online CSS compressor and optimizer](#) based on csstidy. If you want to create a linear or radial gradient as background or border, check our [CSS Gradient Generator](#).



Hey! You found this booklet interesting? Support Converting Colors with the new Membership Option!

The pro membership hides all ads, plus gives you double the colors in the color bucket, and more awesome pro features!

**[Learn more, Memberships starting at \\$2.50/m!](#)**

**Follow me  
on Twitter!**

@ConvertingColor