

Converting Colors

Hex(FF5F8A)

Have a look what the booklet for
Hex(FF5F8A) contains.

Hex(FF5F8A)	3
<i>Conversions</i>	4
<i>Details</i>	6
<i>Harmonies</i>	11
<i>Previews</i>	23
<i>Color Blindness Simulation</i>	26
<i>CSS Examples</i>	29

Color

Hex(F5F8A)

Conversions

Conversions Part 1

Format	Color
Hex	FF5F8A
RGB	255, 95, 138
RGB Percent	100%, 37%, 54%
CMY	0.0000, 0.6275, 0.4588
CMYK	0.00, 0.63, 0.46, 0.00
HSL	344°, 100%, 69%
HSV	344°, 63%, 100%
XYZ	49.9197, 31.2794, 27.4512
YIQ	147.7420, 81.5570, 47.2930

Conversions

Conversions Part 2

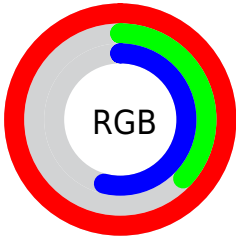
Format	Color
R_{YB}	255, 95, 138
Decimal	16736138
CIE _{Lab}	62.74, 64.00, 9.42
CIE _{LCh}	63, 64.691, 8.370
Yxy	31.2794, 0.4595, 0.2879
Android (android.graphics.Color)	4294926218 (0xFFFF5F8A)
YUV	147.7420, -4.8028, 94.0653
Hunter-Lab	55.9280, 61.4498, 10.0482

Details

The Hex color **FF5F8A** is a light color, and the websafe version is hex **FF6699**. The color can be described as light muted rose. A complement of this color would be **5FFFD4**, and the grayscale version is **949494**.

A 20% lighter version of the original color is **FF98BF**, and **C11E58** is the 20% darker color. If you saturate the color by 10%, you get **FF4577**, and if you desaturate by 10%, it is **FF799D**.

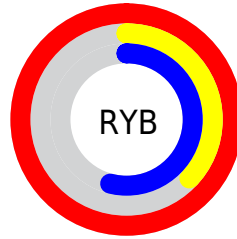
Distribution



Red (100%)

Green (37%)

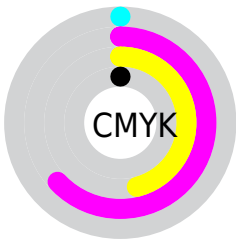
Blue (54%)



Red (100%)

Yellow (37%)

Blue (54%)

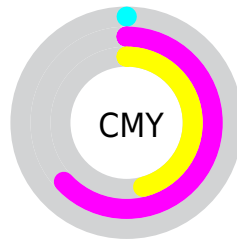


Cyan (0%)

Magenta (63%)

Yellow (46%)

Black (0%)



Cyan (0%)

Magenta (63%)

Yellow (46%)

Brightness & Saturation Gradients

These gradients show how the Hex color FF5F8A changes by changing the brightness by 10 percent. The first figure shows a shift by +10% for each color and the second figure -10%.

Similar to the brightness gradients but the following saturation gradients show a change of the Hex color FF5F8A by changing the saturation by 10% instead.

 FF5F8A

 FF5F8A

FFFFFF

 E04171

 FF98BF

 C11E58

 FFB5DB

 A30041

 FFD2F7

 85002C

 FFF0FF

 670018

 4B0002

 2D0001

 000000

 FF5F8A

 FF5F8A

 FF4577

 FF799D

 FF2C65

 FF92AF

 FF1252

 FFACC2

 FF0045

 FFC5D5

 FFDFE7

 FFF8FA

FFFFFF

Harmonies

Analogous

The Analogous color harmony consists of three colors that are next to each other on the color wheel.



E968C3



FF5F8A



F66D53

Triad

The Triadic color harmony groups three colors that are evenly spaced from another and form a triangle on the color wheel.



FF5F8A



68A835



00A9FF

Complementary

The Complementary color scheme is a pair of colors which are on the opposite of each other on the color wheel.



FF5F8A



5FFFD4

Split Complementary

Split-complementary colors differ from the complementary color scheme. The scheme consists of three colors, the original color and two neighbors of the complement color.



00B1DE



FF5F8A



00B06B

Square

The Square scheme is like the rectangle color scheme, but the four colors are evenly spaced on the color wheel.



FF5F8A



A69A0E



00B3A7



2B99FF

Rectangle

The Rectangle color scheme consists of four colors that form a rectangle on the color wheel.



FF5F8A



E37D34



00B3A7



00ADF9

Sweetspot

The Sweet Spot groups the original color and five complimentary colors.



FF5F8A



FFCFDC



D25FFF



80626A



000000



808080

Same Dimension

The Same Dimension uses a secret algorithm to generate beautiful new colors.



FF5F8A



FF4073



FF825F



807376



BF0033



400011

Inverse Universe

The Inverse Universe completely reimagines the original color for something new.



FF5F8A



FF4073



5FDCFF



807376



BF0033



400011

Previews

White Background



This preview shows how the Hex color FF5F8A looks on a white background.

Color Contrast Check

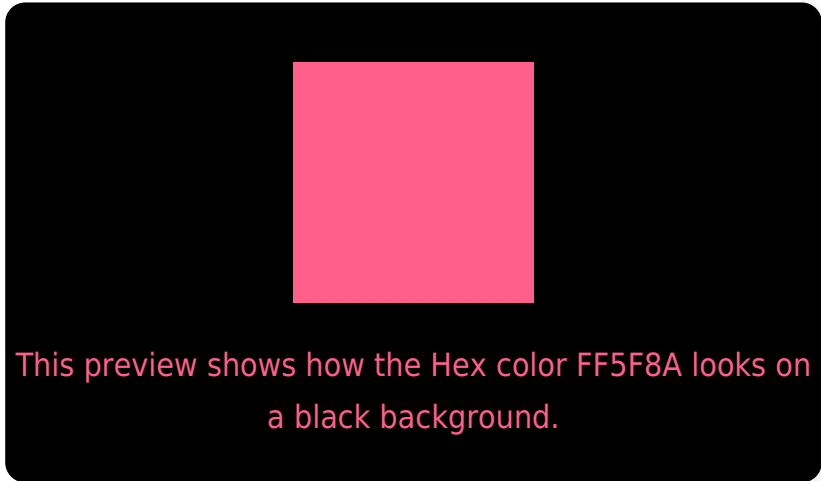
Large Text (above 18pt) WCAG AA × Fail

Any Text WCAG AA × Fail

Large Text (above 18pt) WCAG AAA × Fail

Any Text WCAG AAA × Fail

Black Background



Color Contrast Check

Large Text (above 18pt) WCAG AA ✓ Pass

Any Text WCAG AA ✓ Pass

Large Text (above 18pt) WCAG AAA ✓ Pass

Any Text WCAG AAA ✓ Pass

If you want to check with other color combinations, try the [Color Contrast Checker](#).

Hex FF5F8A Background



This preview shows how black text looks on a background with the Hex color FF5F8A.



This preview shows how white text looks on a background with the Hex color FF5F8A.

Color Blindness Simulation

Color vision deficiency is a very complex topic, and I could not describe the different causes any better than Wikipedia does, so if you want to learn more, you should check out their [article about color blindness](#).

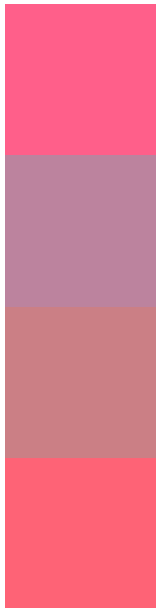
Dichromacy





Tritanopia
FD656B

Trichromacy



Original Color
FF5F8A

Protanomaly
BC839E

Deuteranomaly
CB7F85

Tritanomaly
FE6376

Monochromacy



Original Color
FF5F8A

Achromatopsia
949494

Achromatomaly
BB8190

CSS Examples

Text

The CSS property to change the color of the text to Hex FF5F8A is called "color". The color property can be set on classes, ids or directly on the HTML element.

This example shows how text in the color #FF5F8A looks like.

```
.text, #text, p{  
    color:#FF5F8A  
}
```

If you want to add a text shadow in that color use the text-shadow property, you can generate a text shadow directly with our [CSS Text Shadow Generator](#).

Here you see how black text with a 4 pixel #FF5F8A colored shadow looks like.

```
.shadow{ text-shadow: 4px 4px 2px #FF5F8A
}
```

Border

The CSS property to change the border of an element to Hex FF5F8A is called "border". The border property can be set on classes, ids or directly on the HTML element.

This example shows the color as border, it can be applied via the CSS property "border" or "border-color".

```
.border, #border, table{ border:4px solid
#FF5F8A }
```

If only the border color should be changed use the property `border-color`.

```
.border{ border-color:#FF5F8A }
```

If you want to add a box shadow in that color use:

Here you see how a box with a 4 pixel #FF5F8A colored shadow looks like.

```
.boxshadow{ -moz-box-shadow:4px 4px 4px  
4px #FF5F8A; -webkit-box-shadow:4px 4px  
4px 4px #FF5F8A; box-shadow:4px 4px 4px  
4px #FF5F8A }
```

Background

The CSS property to change the background color of an element to Hex FF5F8A is called "background". The background property can be set on classes, ids or directly on the HTML element.

```
.background, #background, body{  
background:#FF5F8A }
```

If only the background color should be changed can be used:

```
.background{ background-color:#FF5F8A }
```

This example shows the color as background, it is applied via the CSS property "background".

To optimize and compress your CSS code, you can use our [online CSS compressor and optimizer](#) based on csstidy. If you want to create a linear or radial gradient as background or border, check our [CSS Gradient Generator](#).

Hey! You found this booklet interesting? Support Converting Colors with the new Membership Option!

The pro membership hides all ads, plus gives you double the colors in the color bucket, and more awesome pro features!

[Learn more, Memberships starting at \\$2.50/m!](#)

**Follow me
on Twitter!**

@ConvertingColor