

Converting Colors

Hex(FF6681)

Have a look what the booklet for
Hex(FF6681) contains.

Hex(FF6681)	3
<i>Conversions</i>	4
<i>Details</i>	6
<i>Harmonies</i>	11
<i>Previews</i>	23
<i>Color Blindness Simulation</i>	26
<i>CSS Examples</i>	29

Color

Hex(F6681)

Conversions

Conversions Part 1

Format	Color
Hex	FF6681
RGB	255, 102, 129
RGB Percent	100%, 40%, 51%
CMY	0.0000, 0.6000, 0.4941
CMYK	0.00, 0.60, 0.49, 0.00
HSL	349°, 100%, 70%
HSV	349°, 60%, 100%
XYZ	49.9538, 32.3477, 24.3798
YIQ	150.8250, 82.5210, 40.8330

Conversions

Conversions Part 2

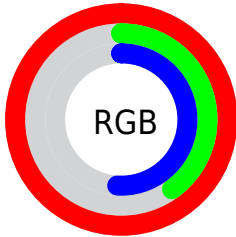
Format	Color
R _Y B	255, 102, 129
Decimal	16737921
CIE Lab	63.63, 60.27, 15.84
CIE LCh	64, 62.321, 14.729
Yxy	32.3477, 0.4683, 0.3032
Android (android.graphics.Color)	4294928001 (0xFFFF6681)
YUV	150.8250, -10.7597, 91.3615
Hunter-Lab	56.8751, 57.2466, 14.3976

Details

The Hex color **FF6681** is a light color, and the websafe version is hex **FF6699**. A complement of this color would be **66FFE4**, and the grayscale version is **979797**.

A 20% lighter version of the original color is **FF9FB6**, and **C12A50** is the 20% darker color. If you saturate the color by 10%, you get **FF4D6C**, and if you desaturate by 10%, it is **FF8096**.

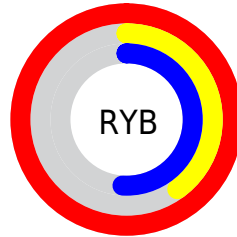
Distribution



Red (100%)

Green (40%)

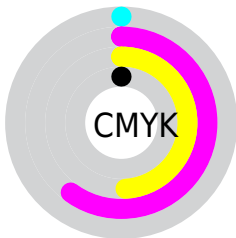
Blue (51%)



Red (100%)

Yellow (40%)

Blue (51%)

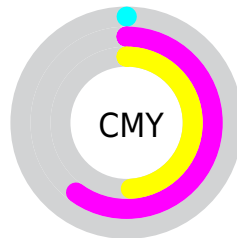


Cyan (0%)

Magenta (60%)

Yellow (49%)

Black (0%)



Cyan (0%)

Magenta (60%)

Yellow (49%)

Brightness & Saturation Gradients

These gradients show how the Hex color FF6681 changes by changing the brightness by 10 percent. The first figure shows a shift by +10% for each color and the second figure -10%.

Similar to the brightness gradients but the following saturation gradients show a change of the Hex color FF6681 by changing the saturation by 10% instead.

 FF6681

 FF6681

FFFFFF

 E04968

 FF9FB6

 C12A50

 FFBBD1

 A30039

 FFD8ED

 850024

 FFF6FF

 670010

 4A0002

 2D0001

 000000

 FF6681

 FF6681

 FF4D6C

 FF8096

 FF3357

 FF99AB

 FF1942

 FFB3C0

 FF002D

 FFCCD5

 FFE6EA

FFFFFF

Harmonies

Analogous

The Analogous color harmony consists of three colors that are next to each other on the color wheel.



F06AB9



FF6681



F1764E

Triad

The Triadic color harmony groups three colors that are evenly spaced from another and form a triangle on the color wheel.



FF6681



5DAC46



00A8FF

Complementary

The Complementary color scheme is a pair of colors which are on the opposite of each other on the color wheel.



FF6681



66FFE4

Split Complementary

Split-complementary colors differ from the complementary color scheme. The scheme consists of three colors, the original color and two neighbors of the complement color.



00B2E7



FF6681



00B37B

Square

The Square scheme is like the rectangle color scheme, but the four colors are evenly spaced on the color wheel.



FF6681



9DA020



00B5B5



6197FF

Rectangle

The Rectangle color scheme consists of four colors that form a rectangle on the color wheel.



FF6681



DC8632



00B5B5



00ACFE

Sweetspot

The Sweet Spot groups the original color and five complimentary colors.



FF6681



FFD1D9



E366FF



806368



000000



808080

Same Dimension

The Same Dimension uses a secret algorithm to generate beautiful new colors.



FF6681



FF4768



FF9666



807375



BF0022



40000B

Inverse Universe

The Inverse Universe completely reimagines the original color for something new.



FF6681



FF4768



66CFFF



807375



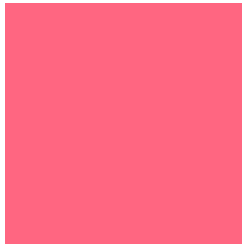
BF0022



40000B

Previews

White Background



This preview shows how the Hex color FF6681 looks on a white background.

Color Contrast Check

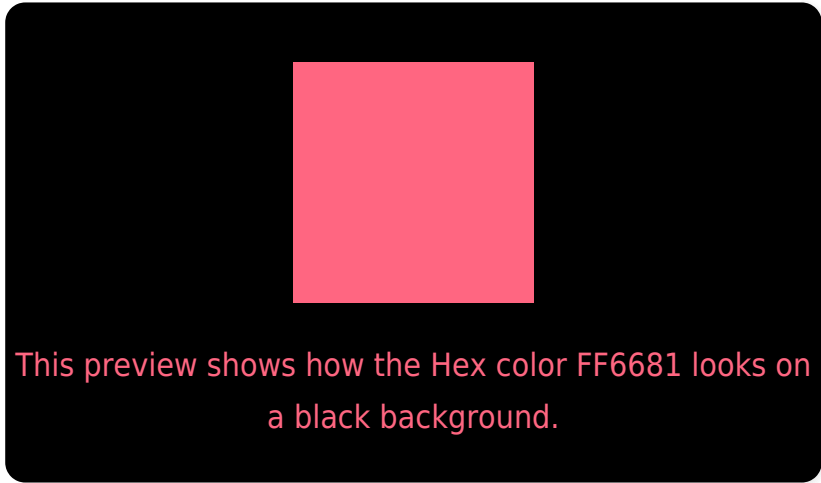
Large Text (above 18pt) WCAG AA × Fail

Any Text WCAG AA × Fail

Large Text (above 18pt) WCAG AAA × Fail

Any Text WCAG AAA × Fail

Black Background



Color Contrast Check

Large Text (above 18pt) WCAG AA ✓ Pass

Any Text WCAG AA ✓ Pass

Large Text (above 18pt) WCAG AAA ✓ Pass

Any Text WCAG AAA ✓ Pass

If you want to check with other color combinations, try the [Color Contrast Checker](#).

Hex FF6681 Background



This preview shows how black text looks on a background with the Hex color FF6681.

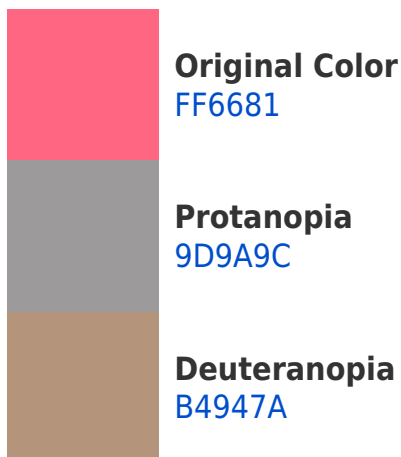


This preview shows how white text looks on a background with the Hex color FF6681.

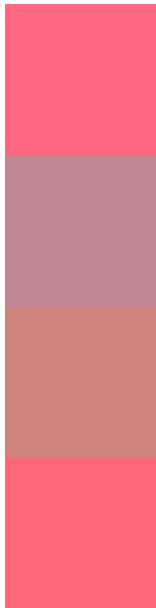
Color Blindness Simulation

Color vision deficiency is a very complex topic, and I could not describe the different causes any better than Wikipedia does, so if you want to learn more, you should check out their [article about color blindness](#).

Dichromacy



Trichromacy



Original Color
FF6681

Protanomaly
C18792

Deuteranomaly
CF837D

Tritanomaly
FE6876

Monochromacy



Original Color
FF6681

Achromatopsia
979797

Achromatomaly
BD858F

CSS Examples

Text

The CSS property to change the color of the text to Hex FF6681 is called "color". The color property can be set on classes, ids or directly on the HTML element.

This example shows how text in the color #FF6681 looks like.

```
.text, #text, p{  
    color:#FF6681  
}
```

If you want to add a text shadow in that color use the text-shadow property, you can generate a text shadow directly with our [CSS Text Shadow Generator](#).

Here you see how black text with a 4 pixel #FF6681 colored shadow looks like.

```
.shadow{ text-shadow: 4px 4px 2px #FF6681
}
```

Border

The CSS property to change the border of an element to Hex FF6681 is called "border". The border property can be set on classes, ids or directly on the HTML element.

This example shows the color as border, it can be applied via the CSS property "border" or "border-color".

```
.border, #border, table{ border:4px solid
#FF6681 }
```

If only the border color should be changed use the property `border-color`.

```
.border{ border-color:#FF6681 }
```

If you want to add a box shadow in that color use:

Here you see how a box with a 4 pixel #FF6681 colored shadow looks like.

```
.boxshadow{ -moz-box-shadow:4px 4px 4px  
4px #FF6681; -webkit-box-shadow:4px 4px  
4px 4px #FF6681; box-shadow:4px 4px 4px  
4px #FF6681 }
```

Background

The CSS property to change the background color of an element to Hex FF6681 is called "background". The background property can be set on classes, ids or directly on the HTML element.

```
.background, #background, body{  
background:#FF6681 }
```

If only the background color should be changed can be used:

```
.background{ background-color:#FF6681 }
```

This example shows the color as background, it is applied via the CSS property "background".

To optimize and compress your CSS code, you can use our [online CSS compressor and optimizer](#) based on csstidy. If you want to create a linear or radial gradient as background or border, check our [CSS Gradient Generator](#).

Hey! You found this booklet interesting? Support Converting Colors with the new Membership Option!

The pro membership hides all ads, plus gives you double the colors in the color bucket, and more awesome pro features!

[Learn more, Memberships starting at \\$2.50/m!](#)

**Follow me
on Twitter!**

@ConvertingColor