

Converting Colors

Hex(FF6C83)

Have a look what the booklet for
Hex(FF6C83) contains.

Hex(FF6C83)	3
<i>Conversions</i>	4
<i>Details</i>	6
<i>Harmonies</i>	11
<i>Previews</i>	23
<i>Color Blindness Simulation</i>	26
<i>CSS Examples</i>	29

Color

Hex(F66C83)

Conversions

Conversions Part 1

Format	Color
Hex	FF6C83
RGB	255, 108, 131
RGB Percent	100%, 42%, 51%
CMY	0.0000, 0.5765, 0.4863
CMYK	0.00, 0.58, 0.49, 0.00
HSL	351°, 100%, 71%
HSV	351°, 58%, 100%
XYZ	50.6993, 33.6238, 25.2906
YIQ	154.5750, 80.2290, 38.3170

Conversions

Conversions Part 2

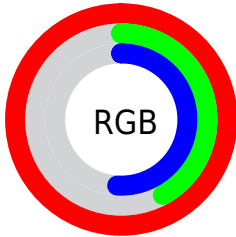
Format	Color
R _Y B	255, 108, 131
Decimal	16739459
CIE Lab	64.66, 57.82, 16.13
CIE LCh	65, 60.024, 15.591
Yxy	33.6238, 0.4625, 0.3067
Android (android.graphics.Color)	4294929539 (0xFFFF6C83)
YUV	154.5750, -11.6225, 88.0727
Hunter-Lab	57.9860, 54.5934, 14.7309

Details

The Hex color **FF6C83** is a light color, and the websafe version is hex **FF6699**. A complement of this color would be **6CFFE8**, and the grayscale version is **9B9B9B**.

A 20% lighter version of the original color is **FFA4B8**, and **C13252** is the 20% darker color. If you saturate the color by 10%, you get **FF536D**, and if you desaturate by 10%, it is **FF8699**.

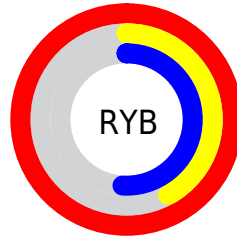
Distribution



Red (100%)

Green (42%)

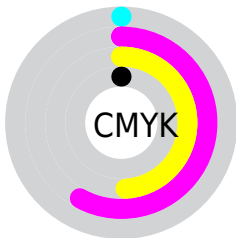
Blue (51%)



Red (100%)

Yellow (42%)

Blue (51%)

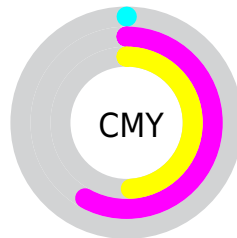


Cyan (0%)

Magenta (58%)

Yellow (49%)

Black (0%)



Cyan (0%)

Magenta (58%)

Yellow (49%)

Brightness & Saturation Gradients

These gradients show how the Hex color FF6C83 changes by changing the brightness by 10 percent. The first figure shows a shift by +10% for each color and the second figure -10%.

Similar to the brightness gradients but the following saturation gradients show a change of the Hex color FF6C83 by changing the saturation by 10% instead.

 FF6C83

 FF6C83

FFFFFF

 E0506A

 FFA4B8

 C13252

 FFC1D3

 A30A3B

 FFDEF0

 850026

 FFFBFF

 680012

 4B0001

 2E0002

 000000

 FF6C83

 FF6C83

■ FF536D

■ FF8699

■ FF3958

■ FF9FAE

■ FF2042

■ FFB9C4

■ FF062D

■ FFD2D9

■ FF0028

■ FFECEF

FFFFFF

Harmonies

Analogous

The Analogous color harmony consists of three colors that are next to each other on the color wheel.



F16FB9



FF6C83



F17B52

Triad

The Triadic color harmony groups three colors that are evenly spaced from another and form a triangle on the color wheel.



FF6C83



61AF4D



00AFFF

Complementary

The Complementary color scheme is a pair of colors which are on the opposite of each other on the color wheel.



FF6C83



6CFFE8

Split Complementary

Split-complementary colors differ from the complementary color scheme. The scheme consists of three colors, the original color and two neighbors of the complement color.



00B4E8



FF6C83



00B580

Square

The Square scheme is like the rectangle color scheme, but the four colors are evenly spaced on the color wheel.



FF6C83



9FA32B



00B7B8



6D99FF

Rectangle

The Rectangle color scheme consists of four colors that form a rectangle on the color wheel.



FF6C83



DC8A38



00B7B8



00AEFE

Sweetspot

The Sweet Spot groups the original color and five complimentary colors.



FF6C83



FFD4DA



E76CFF



80666A



000000



808080

Same Dimension

The Same Dimension uses a secret algorithm to generate beautiful new colors.



FF6C83



FF4F6B



FF9D6C



807375



BF001E



40000A

Inverse Universe

The Inverse Universe completely reimagines the original color for something new.



FF6C83



FF4F6B



6CCEFF



807375



BF001E



40000A

Previews

White Background



This preview shows how the Hex color FF6C83 looks on a white background.

Color Contrast Check

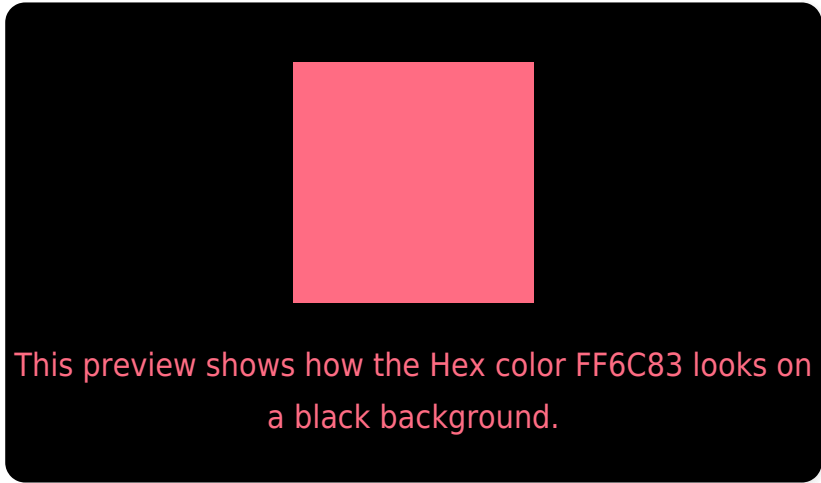
Large Text (above 18pt) WCAG AA × Fail

Any Text WCAG AA × Fail

Large Text (above 18pt) WCAG AAA × Fail

Any Text WCAG AAA × Fail

Black Background



Color Contrast Check

Large Text (above 18pt) WCAG AA ✓ Pass

Any Text WCAG AA ✓ Pass

Large Text (above 18pt) WCAG AAA ✓ Pass

Any Text WCAG AAA ✓ Pass

If you want to check with other color combinations, try the [Color Contrast Checker](#).

Hex FF6C83 Background



This preview shows how black text looks on a background with the Hex color FF6C83.



This preview shows how white text looks on a background with the Hex color FF6C83.

Color Blindness Simulation

Color vision deficiency is a very complex topic, and I could not describe the different causes any better than Wikipedia does, so if you want to learn more, you should check out their [article about color blindness](#).

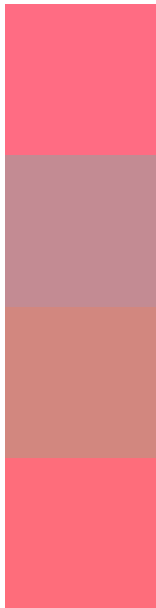
Dichromacy





Tritanopia
FE6E76

Trichromacy



Original Color
FF6C83

Protanomaly
C38B93

Deuteranomaly
D2877F

Tritanomaly
FE6D7B

Monochromacy



Original Color
FF6C83

Achromatopsia
9B9B9B

Achromatomaly
BF8A92

CSS Examples

Text

The CSS property to change the color of the text to Hex FF6C83 is called "color". The color property can be set on classes, ids or directly on the HTML element.

This example shows how text in the color #FF6C83 looks like.

```
.text, #text, p{  
    color:#FF6C83  
}
```

If you want to add a text shadow in that color use the text-shadow property, you can generate a text shadow directly with our [CSS Text Shadow Generator](#).

Here you see how black text with a 4 pixel #FF6C83 colored shadow looks like.

```
.shadow{ text-shadow: 4px 4px 2px #FF6C83
}
```

Border

The CSS property to change the border of an element to Hex FF6C83 is called "border". The border property can be set on classes, ids or directly on the HTML element.

This example shows the color as border, it can be applied via the CSS property "border" or "border-color".

```
.border, #border, table{ border:4px solid
#FF6C83 }
```

If only the border color should be changed use the property `border-color`.

```
.border{ border-color:#FF6C83 }
```

If you want to add a box shadow in that color use:

Here you see how a box with a 4 pixel #FF6C83 colored shadow looks like.

```
.boxshadow{ -moz-box-shadow:4px 4px 4px  
4px #FF6C83; -webkit-box-shadow:4px 4px  
4px 4px #FF6C83; box-shadow:4px 4px 4px  
4px #FF6C83 }
```

Background

The CSS property to change the background color of an element to Hex FF6C83 is called "background". The background property can be set on classes, ids or directly on the HTML element.

```
.background, #background, body{  
background:#FF6C83 }
```

If only the background color should be changed can be used:

```
.background{ background-color:#FF6C83 }
```

This example shows the color as background, it is applied via the CSS property "background".

To optimize and compress your CSS code, you can use our [online CSS compressor and optimizer](#) based on csstidy. If you want to create a linear or radial gradient as background or border, check our [CSS Gradient Generator](#).

Hey! You found this booklet interesting? Support Converting Colors with the new Membership Option!

The pro membership hides all ads, plus gives you double the colors in the color bucket, and more awesome pro features!

[Learn more, Memberships starting at \\$2.50/m!](#)

**Follow me
on Twitter!**

@ConvertingColor