

Converting Colors

Hex(FF6E84)

Have a look what the booklet for
Hex(FF6E84) contains.

Hex(FF6E84)	3
<i>Conversions</i>	4
<i>Details</i>	6
<i>Harmonies</i>	11
<i>Previews</i>	23
<i>Color Blindness Simulation</i>	26
<i>CSS Examples</i>	29

Color

Hex(F6E84)

Conversions

Conversions Part 1

Format	Color
Hex	FF6E84
RGB	255, 110, 132
RGB Percent	100%, 43%, 52%
CMY	0.0000, 0.5686, 0.4824
CMYK	0.00, 0.57, 0.48, 0.00
HSL	351°, 100%, 72%
HSV	351°, 57%, 100%
XYZ	50.9808, 34.0778, 25.7205
YIQ	155.8630, 79.3580, 37.5820

Conversions

Conversions Part 2

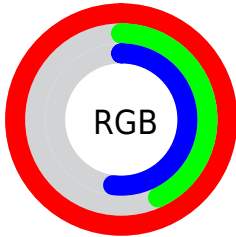
Format	Color
R_{YB}	255, 110, 132
Decimal	16739972
CIE Lab	65.02, 57.01, 16.06
CIE LCh	65, 59.227, 15.737
Yxy	34.0778, 0.4602, 0.3076
Android (android.graphics.Color)	4294930052 (0xFFFF6E84)
YUV	155.8630, -11.7645, 86.9431
Hunter-Lab	58.3762, 53.7283, 14.7402

Details

The Hex color **FF6E84** is a light color, and the websafe version is hex **FF6699**. A complement of this color would be **6EFFE9**, and the grayscale version is **9C9C9C**.

A 20% lighter version of the original color is **FFA6B9**, and **C13553** is the 20% darker color. If you saturate the color by 10%, you get **FF556E**, and if you desaturate by 10%, it is **FF889A**.

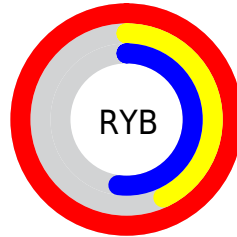
Distribution



Red (100%)

Green (43%)

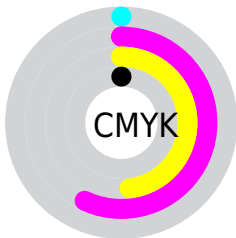
Blue (52%)



Red (100%)

Yellow (43%)

Blue (52%)

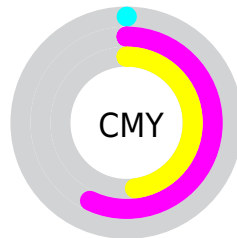


Cyan (0%)

Magenta (57%)

Yellow (48%)

Black (0%)



Cyan (0%)

Magenta (57%)

Yellow (48%)

Brightness & Saturation Gradients

These gradients show how the Hex color FF6E84 changes by changing the brightness by 10 percent. The first figure shows a shift by +10% for each color and the second figure -10%.

Similar to the brightness gradients but the following saturation gradients show a change of the Hex color FF6E84 by changing the saturation by 10% instead.

 FF6E84

 FF6E84

FFFFFF

 E0526B

 FFA6B9

 C13553

 FFC3D5

 A3103C

 FFE0F1

 850027

 FFFDFF

 680013

 4B0001

 2F0002

 000000

 FF6E84

 FF6E84

 FF556E

 FF889A

 FF3B59

 FFA1AF

 FF2143

 FFBBC5

 FF082D

 FFD4DB

 FF0027

 FFEEF0

FFFFFF

Harmonies

Analogous

The Analogous color harmony consists of three colors that are next to each other on the color wheel.



F271B9



FF6E84



F17D54

Triad

The Triadic color harmony groups three colors that are evenly spaced from another and form a triangle on the color wheel.



FF6E84



62B050



00ABFF

Complementary

The Complementary color scheme is a pair of colors which are on the opposite of each other on the color wheel.



FF6E84



6EFFE9

Split Complementary

Split-complementary colors differ from the complementary color scheme. The scheme consists of three colors, the original color and two neighbors of the complement color.



00B4E9



FF6E84



00B682

Square

The Square scheme is like the rectangle color scheme, but the four colors are evenly spaced on the color wheel.



FF6E84



A0A2E



00B8B9



709AFF

Rectangle

The Rectangle color scheme consists of four colors that form a rectangle on the color wheel.



FF6E84



DC8B3B



00B8B9



00AFFE

Sweetspot

The Sweet Spot groups the original color and five complimentary colors.



FF6E84



FFD4DA



E76EFF



80666A



000000



808080

Same Dimension

The Same Dimension uses a secret algorithm to generate beautiful new colors.



FF6E84



FF526C



FF9E6E



807375



BF001D



40000A

Inverse Universe

The Inverse Universe completely reimagines the original color for something new.



FF6E84



FF526C



6ECFFF



807375



BF001D



40000A

Previews

White Background



This preview shows how the Hex color FF6E84 looks on a white background.

Color Contrast Check

Large Text (above 18pt) WCAG AA × Fail

Any Text WCAG AA × Fail

Large Text (above 18pt) WCAG AAA × Fail

Any Text WCAG AAA × Fail

Black Background



Color Contrast Check

Large Text (above 18pt) WCAG AA ✓ Pass

Any Text WCAG AA ✓ Pass

Large Text (above 18pt) WCAG AAA ✓ Pass

Any Text WCAG AAA ✓ Pass

If you want to check with other color combinations, try the [Color Contrast Checker](#).

Hex FF6E84 Background



This preview shows how black text looks on a background with the Hex color FF6E84.

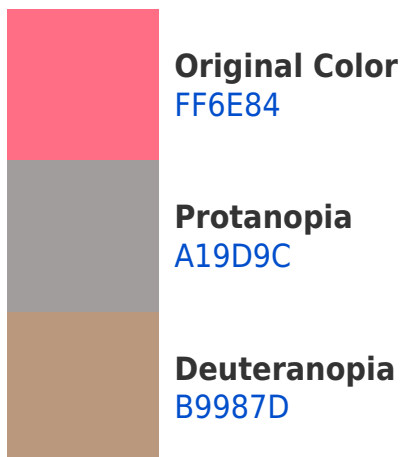


This preview shows how white text looks on a background with the Hex color FF6E84.

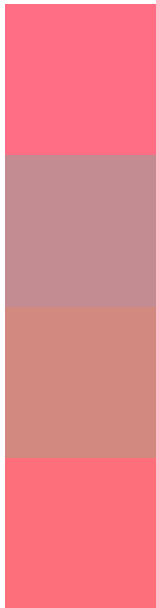
Color Blindness Simulation

Color vision deficiency is a very complex topic, and I could not describe the different causes any better than Wikipedia does, so if you want to learn more, you should check out their [article about color blindness](#).

Dichromacy



Trichromacy



Original Color
FF6E84

Protanomaly
C38C93

Deuteranomaly
D28980

Tritanomaly
FE6F7C

Monochromacy



Original Color
FF6E84

Achromatopsia
9C9C9C

Achromatomaly
C08B93

CSS Examples

Text

The CSS property to change the color of the text to Hex FF6E84 is called "color". The color property can be set on classes, ids or directly on the HTML element.

This example shows how text in the color #FF6E84 looks like.

```
.text, #text, p{  
    color:#FF6E84  
}
```

If you want to add a text shadow in that color use the text-shadow property, you can generate a text shadow directly with our [CSS Text Shadow Generator](#).

Here you see how black text with a 4 pixel #FF6E84 colored shadow looks like.

```
.shadow{ text-shadow: 4px 4px 2px #FF6E84
}
```

Border

The CSS property to change the border of an element to Hex FF6E84 is called "border". The border property can be set on classes, ids or directly on the HTML element.

This example shows the color as border, it can be applied via the CSS property "border" or "border-color".

```
.border, #border, table{ border:4px solid
#FF6E84 }
```

If only the border color should be changed use the property `border-color`.

```
.border{ border-color:#FF6E84 }
```

If you want to add a box shadow in that color use:

Here you see how a box with a 4 pixel #FF6E84 colored shadow looks like.

```
.boxshadow{ -moz-box-shadow:4px 4px 4px  
4px #FF6E84; -webkit-box-shadow:4px 4px  
4px 4px #FF6E84; box-shadow:4px 4px 4px  
4px #FF6E84 }
```

Background

The CSS property to change the background color of an element to Hex FF6E84 is called "background". The background property can be set on classes, ids or directly on the HTML element.

```
.background, #background, body{  
background:#FF6E84 }
```

If only the background color should be changed can be used:

```
.background{ background-color:#FF6E84 }
```

This example shows the color as background, it is applied via the CSS property "background".

To optimize and compress your CSS code, you can use our [online CSS compressor and optimizer](#) based on csstidy. If you want to create a linear or radial gradient as background or border, check our [CSS Gradient Generator](#).

Hey! You found this booklet interesting? Support Converting Colors with the new Membership Option!

The pro membership hides all ads, plus gives you double the colors in the color bucket, and more awesome pro features!

[Learn more, Memberships starting at \\$2.50/m!](#)

**Follow me
on Twitter!**

@ConvertingColor