

Converting Colors

Hex(FF6F92)

Have a look what the booklet for
Hex(FF6F92) contains.

Hex(FF6F92)	3
<i>Conversions</i>	4
<i>Details</i>	6
<i>Harmonies</i>	11
<i>Previews</i>	23
<i>Color Blindness Simulation</i>	26
<i>CSS Examples</i>	29

Color

Hex(F66F92)

Conversions

Conversions Part 1

Format	Color
Hex	FF6F92
RGB	255, 111, 146
RGB Percent	100%, 44%, 57%
CMY	0.0000, 0.5647, 0.4275
CMYK	0.00, 0.56, 0.43, 0.00
HSL	345°, 100%, 72%
HSV	345°, 56%, 100%
XYZ	52.1127, 34.7042, 31.1461
YIQ	158.0460, 74.5890, 41.4130

Conversions

Conversions Part 2

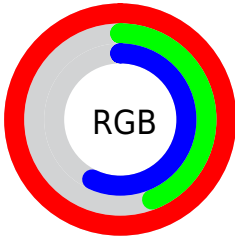
Format	Color
R_{YB}	255, 111, 146
Decimal	16740242
CIE Lab	65.52, 57.86, 8.77
CIE LCh	66, 58.525, 8.618
Yxy	34.7042, 0.4418, 0.2942
Android (android.graphics.Color)	4294930322 (0xFFFF6F92)
YUV	158.0460, -5.9387, 85.0287
Hunter-Lab	58.9103, 54.8103, 9.8904

Details

The Hex color **FF6F92** is a light color, and the websafe version is hex **FF6699**. A complement of this color would be **6FFFDC**, and the grayscale version is **9E9E9E**.

A 20% lighter version of the original color is **FFA7C8**, and **C23660** is the 20% darker color. If you saturate the color by 10%, you get **FF567F**, and if you desaturate by 10%, it is **FF89A5**.

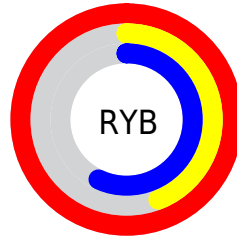
Distribution



Red (100%)

Green (44%)

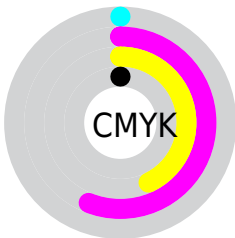
Blue (57%)



Red (100%)

Yellow (44%)

Blue (57%)

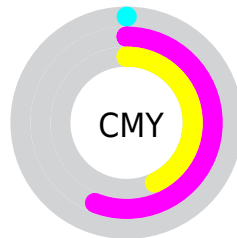


Cyan (0%)

Magenta (56%)

Yellow (43%)

Black (0%)



Cyan (0%)

Magenta (56%)

Yellow (43%)

Brightness & Saturation Gradients

These gradients show how the Hex color FF6F92 changes by changing the brightness by 10 percent. The first figure shows a shift by +10% for each color and the second figure -10%.

Similar to the brightness gradients but the following saturation gradients show a change of the Hex color FF6F92 by changing the saturation by 10% instead.

 FF6F92

 FF6F92

FFFFFF

 E05378

 FFA7C8

 C23660

 FFC4E4

 A41148

 FFE1FF

 860032

 69001D

 4D0002

 310002

 000000

 FF6F92

 FF6F92

 FF567F

 FF89A5

 FF3C6B

 FFA2B9

 FF2258

 FFBCCC

 FF0945

 FFD5DF

 FF003E

 FFEFF3

FFFFFF

Harmonies

Analogous

The Analogous color harmony consists of three colors that are next to each other on the color wheel.



EA76C6



FF6F92



F77A60

Triad

The Triadic color harmony groups three colors that are evenly spaced from another and form a triangle on the color wheel.



FF6F92



75AE48



00AFFF

Complementary

The Complementary color scheme is a pair of colors which are on the opposite of each other on the color wheel.



FF6F92



6FFFD9

Split Complementary

Split-complementary colors differ from the complementary color scheme. The scheme consists of three colors, the original color and two neighbors of the complement color.



00B7DF



FF6F92



00B677

Square

The Square scheme is like the rectangle color scheme, but the four colors are evenly spaced on the color wheel.



FF6F92



ADA12E



00B9AD



53A0FF

Rectangle

The Rectangle color scheme consists of four colors that form a rectangle on the color wheel.



FF6F92



E68845



00B9AD



00B2F8

Sweetspot

The Sweet Spot groups the original color and five complimentary colors.



FF6F92



FFD4DE



DB6FFF



80666C



000000



808080

Same Dimension

The Same Dimension uses a secret algorithm to generate beautiful new colors.



FF6F92



FF527C



FF936F



807376



BF002E



40000F

Inverse Universe

The Inverse Universe completely reimagines the original color for something new.



FF6F92



FF527C



6FDBFF



807376



BF002E



40000F

Previews

White Background



This preview shows how the Hex color FF6F92 looks on a white background.

Color Contrast Check

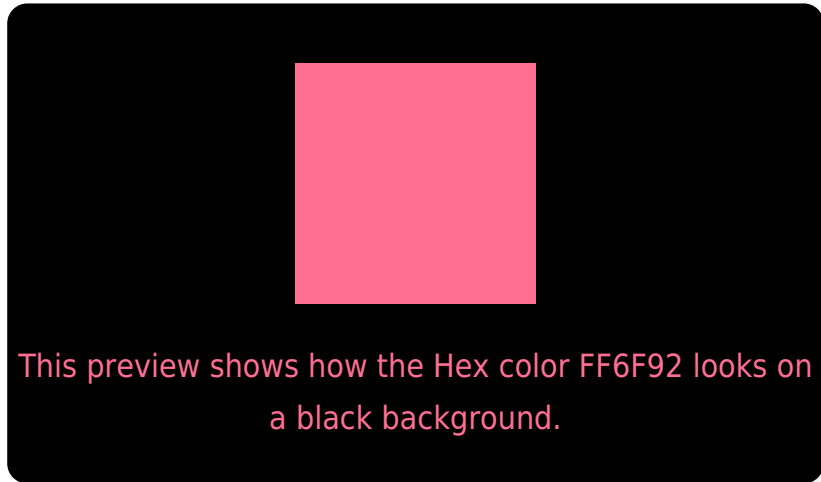
Large Text (above 18pt) WCAG AA × Fail

Any Text WCAG AA × Fail

Large Text (above 18pt) WCAG AAA × Fail

Any Text WCAG AAA × Fail

Black Background



Color Contrast Check

Large Text (above 18pt) WCAG AA ✓ Pass

Any Text WCAG AA ✓ Pass

Large Text (above 18pt) WCAG AAA ✓ Pass

Any Text WCAG AAA ✓ Pass

If you want to check with other color combinations, try the [Color Contrast Checker](#).

Hex FF6F92 Background



This preview shows how black text looks on a background with the Hex color FF6F92.



This preview shows how white text looks on a background with the Hex color FF6F92.

Color Blindness Simulation

Color vision deficiency is a very complex topic, and I could not describe the different causes any better than Wikipedia does, so if you want to learn more, you should check out their [article about color blindness](#).

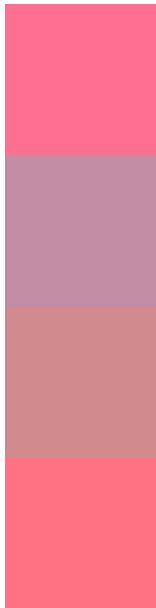
Dichromacy





Tritanopia
FD737B

Trichromacy



Original Color
FF6F92

Protanomaly
C28DA3

Deuteranomaly
D18A8E

Tritanomaly
FE7283

Monochromacy



Original Color
FF6F92

Achromatopsia
9E9E9E

Achromatomaly
C18D9A

CSS Examples

Text

The CSS property to change the color of the text to Hex FF6F92 is called "color". The color property can be set on classes, ids or directly on the HTML element.

This example shows how text in the color #FF6F92 looks like.

```
.text, #text, p{  
    color:#FF6F92  
}
```

If you want to add a text shadow in that color use the text-shadow property, you can generate a text shadow directly with our [CSS Text Shadow Generator](#).

Here you see how black text with a 4 pixel #FF6F92 colored shadow looks like.

```
.shadow{ text-shadow: 4px 4px 2px #FF6F92
}
```

Border

The CSS property to change the border of an element to Hex FF6F92 is called "border". The border property can be set on classes, ids or directly on the HTML element.

This example shows the color as border, it can be applied via the CSS property "border" or "border-color".

```
.border, #border, table{ border:4px solid
#FF6F92 }
```

If only the border color should be changed use the property `border-color`.

```
.border{ border-color:#FF6F92 }
```

If you want to add a box shadow in that color use:

Here you see how a box with a 4 pixel #FF6F92 colored shadow looks like.

```
.boxshadow{ -moz-box-shadow:4px 4px 4px  
4px #FF6F92; -webkit-box-shadow:4px 4px  
4px 4px #FF6F92; box-shadow:4px 4px 4px  
4px #FF6F92 }
```

Background

The CSS property to change the background color of an element to Hex FF6F92 is called "background". The background property can be set on classes, ids or directly on the HTML element.

```
.background, #background, body{  
background:#FF6F92 }
```

If only the background color should be changed can be used:

```
.background{ background-color:#FF6F92 }
```

This example shows the color as background, it is applied via the CSS property "background".

To optimize and compress your CSS code, you can use our [online CSS compressor and optimizer](#) based on csstidy. If you want to create a linear or radial gradient as background or border, check our [CSS Gradient Generator](#).

Hey! You found this booklet interesting? Support Converting Colors with the new Membership Option!

The pro membership hides all ads, plus gives you double the colors in the color bucket, and more awesome pro features!

[Learn more, Memberships starting at \\$2.50/m!](#)

**Follow me
on Twitter!**

@ConvertingColor