

Converting Colors

Hex(FF726A)

Have a look what the booklet for
Hex(FF726A) contains.

Hex(FF726A)	3
<i>Conversions</i>	4
<i>Details</i>	6
<i>Harmonies</i>	11
<i>Previews</i>	23
<i>Color Blindness Simulation</i>	26
<i>CSS Examples</i>	29

Color

Hex(F7726A)

Conversions

Conversions Part 1

Format	Color
Hex	FF726A
RGB	255, 114, 106
RGB Percent	100%, 45%, 42%
CMY	0.0000, 0.5529, 0.5843
CMYK	0.00, 0.55, 0.58, 0.00
HSL	3°, 100%, 71%
HSV	3°, 58%, 100%
XYZ	49.8588, 34.3352, 17.6352
YIQ	155.2470, 86.6040, 27.4040

Conversions

Conversions Part 2

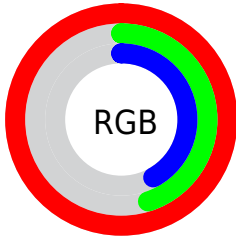
Format	Color
R _Y B	255, 114, 106
Decimal	16740970
CIE Lab	65.23, 53.13, 31.03
CIE LCh	65, 61.525, 30.287
Yxy	34.3352, 0.4896, 0.3372
Android (android.graphics.Color)	4294931050 (0xFFFF726A)
YUV	155.2470, -24.2788, 87.4834
Hunter-Lab	58.5963, 49.3399, 23.1734

Details

The Hex color **FF726A** is a light color, and the websafe version is hex **FF6666**. A complement of this color would be **6AF7FF**, and the grayscale version is **9B9B9B**.

A 20% lighter version of the original color is **FFAA9D**, and **C13B3B** is the 20% darker color. If you saturate the color by 10%, you get **FF5A51**, and if you desaturate by 10%, it is **FF8A84**.

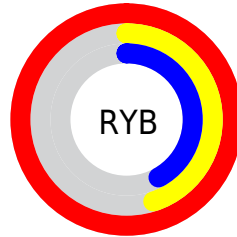
Distribution



Red (100%)

Green (45%)

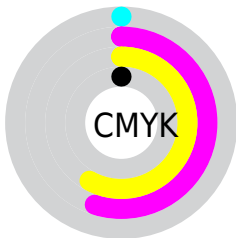
Blue (42%)



Red (100%)

Yellow (45%)

Blue (42%)

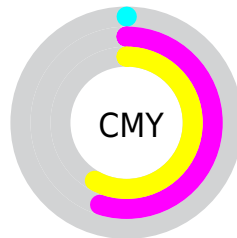


Cyan (0%)

Magenta (55%)

Yellow (58%)

Black (0%)



Cyan (0%)

Magenta (55%)

Yellow (58%)

Brightness & Saturation Gradients

These gradients show how the Hex color FF726A changes by changing the brightness by 10 percent. The first figure shows a shift by +10% for each color and the second figure -10%.

Similar to the brightness gradients but the following saturation gradients show a change of the Hex color FF726A by changing the saturation by 10% instead.

 FF726A

 FF726A

FFFFFF

 E05752

 FFAA9D

 C13B3B

 FFC6B8

 A21B25

 FFE3D4


 840010

 FFFFF0

 660000

 480000

 2D0001

 000000

 FF726A

 FF726A

 FF5A51

 FF8A84

 FF4237

 FFA29D

 FF2A1E

 FFBAB7

 FF1104

 FFD3D0

 FF0E00

 FFEBEA

FFFFFF

Harmonies

Analogous

The Analogous color harmony consists of three colors that are next to each other on the color wheel.



FF6BA0



FF726A



E5873D

Triad

The Triadic color harmony groups three colors that are evenly spaced from another and form a triangle on the color wheel.



FF726A



2DB465



00A4FF

Complementary

The Complementary color scheme is a pair of colors which are on the opposite of each other on the color wheel.



FF726A



6AF7FF

Split Complementary

Split-complementary colors differ from the complementary color scheme. The scheme consists of three colors, the original color and two neighbors of the complement color.



00B2FD



FF726A



00B99D

Square

The Square scheme is like the rectangle color scheme, but the four colors are evenly spaced on the color wheel.



FF726A



83AB37



00B8D4



9F90FE

Rectangle

The Rectangle color scheme consists of four colors that form a rectangle on the color wheel.



FF726A



CA9529



00B8D4



00AAFF

Sweetspot

The Sweet Spot groups the original color and five complimentary colors.



FF726A



FFD4D1



FF6AF8



806563



000000



808080

Same Dimension

The Same Dimension uses a secret algorithm to generate beautiful new colors.



FF726A



FF564D



FFBC6A



807373



BF0A00



400300

Inverse Universe

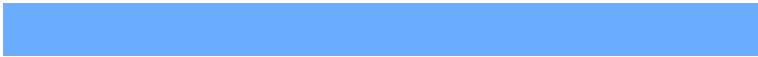
The Inverse Universe completely reimagines the original color for something new.



6AF7FF



4DF5FF



6AADFF



737F80



00B5BF



003C40

Previews

White Background



This preview shows how the Hex color FF726A looks on a white background.

Color Contrast Check

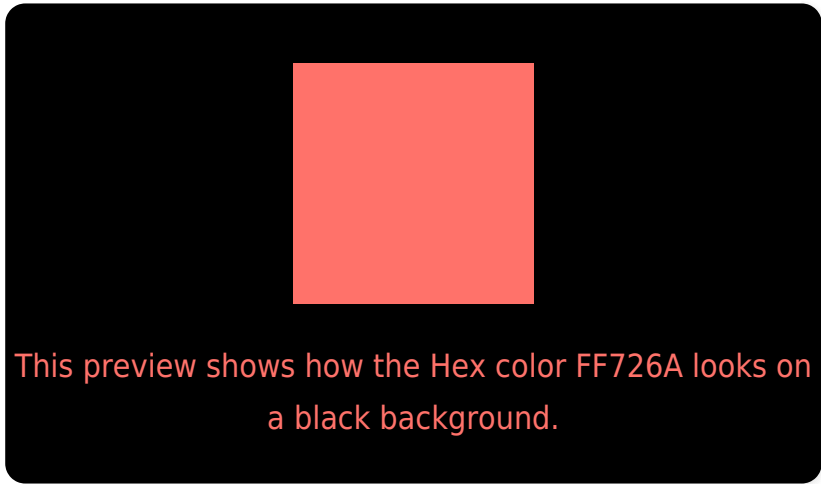
Large Text (above 18pt) WCAG AA × Fail

Any Text WCAG AA × Fail

Large Text (above 18pt) WCAG AAA × Fail

Any Text WCAG AAA × Fail

Black Background



Color Contrast Check

Large Text (above 18pt) WCAG AA ✓ Pass

Any Text WCAG AA ✓ Pass

Large Text (above 18pt) WCAG AAA ✓ Pass

Any Text WCAG AAA ✓ Pass

If you want to check with other color combinations, try the [Color Contrast Checker](#).

Hex FF726A Background



This preview shows how black text looks on a background with the Hex color FF726A.



This preview shows how white text looks on a background with the Hex color FF726A.

Color Blindness Simulation

Color vision deficiency is a very complex topic, and I could not describe the different causes any better than Wikipedia does, so if you want to learn more, you should check out their [article about color blindness](#).

Dichromacy



Original Color
FF726A

Protanopia
A99E7D

Deuteranopia
C09863

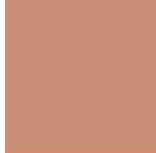


Tritanopia
FF7178

Trichromacy



Original Color
FF726A



Protanomaly
C88E76



Deuteranomaly
D78A66

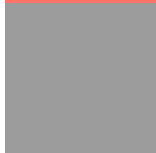


Tritanomaly
FF7173

Monochromacy



Original Color
FF726A



Achromatopsia
9B9B9B



Achromatomaly
BF8C89

CSS Examples

Text

The CSS property to change the color of the text to Hex FF726A is called "color". The color property can be set on classes, ids or directly on the HTML element.

This example shows how text in the color #FF726A looks like.

```
.text, #text, p{  
    color:#FF726A  
}
```

If you want to add a text shadow in that color use the text-shadow property, you can generate a text shadow directly with our [CSS Text Shadow Generator](#).

Here you see how black text with a 4 pixel #FF726A colored shadow looks like.

```
.shadow{ text-shadow: 4px 4px 2px #FF726A
}
```

Border

The CSS property to change the border of an element to Hex FF726A is called "border". The border property can be set on classes, ids or directly on the HTML element.

This example shows the color as border, it can be applied via the CSS property "border" or "border-color".

```
.border, #border, table{ border:4px solid
#FF726A }
```

If only the border color should be changed use the property `border-color`.

```
.border{ border-color:#FF726A }
```

If you want to add a box shadow in that color use:

Here you see how a box with a 4 pixel #FF726A colored shadow looks like.

```
.boxshadow{ -moz-box-shadow:4px 4px 4px  
4px #FF726A; -webkit-box-shadow:4px 4px  
4px 4px #FF726A; box-shadow:4px 4px 4px  
4px #FF726A }
```

Background

The CSS property to change the background color of an element to Hex FF726A is called "background". The background property can be set on classes, ids or directly on the HTML element.

```
.background, #background, body{  
background:#FF726A }
```

If only the background color should be changed can be used:

```
.background{ background-color:#FF726A }
```

This example shows the color as background, it is applied via the CSS property "background".

To optimize and compress your CSS code, you can use our [online CSS compressor and optimizer](#) based on csstidy. If you want to create a linear or radial gradient as background or border, check our [CSS Gradient Generator](#).

Hey! You found this booklet interesting? Support Converting Colors with the new Membership Option!

The pro membership hides all ads, plus gives you double the colors in the color bucket, and more awesome pro features!

[Learn more, Memberships starting at \\$2.50/m!](#)

**Follow me
on Twitter!**

@ConvertingColor