

Converting Colors

Hex(FF726D)

Have a look what the booklet for
Hex(FF726D) contains.

Hex(FF726D)	3
<i>Conversions</i>	4
<i>Details</i>	6
<i>Harmonies</i>	11
<i>Previews</i>	23
<i>Color Blindness Simulation</i>	26
<i>CSS Examples</i>	29

Color

Hex(F7726D)

Conversions

Conversions Part 1

Format	Color
Hex	FF726D
RGB	255, 114, 109
RGB Percent	100%, 45%, 43%
CMY	0.0000, 0.5529, 0.5725
CMYK	0.00, 0.55, 0.57, 0.00
HSL	2°, 100%, 71%
HSV	2°, 57%, 100%
XYZ	50.0176, 34.3988, 18.4714
YIQ	155.5890, 85.6410, 28.3370

Conversions

Conversions Part 2

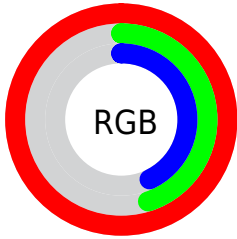
Format	Color
R _Y B	255, 114, 109
Decimal	16740973
CIE Lab	65.28, 53.34, 29.42
CIE LCh	65, 60.914, 28.878
Yxy	34.3988, 0.4861, 0.3343
Android (android.graphics.Color)	4294931053 (0xFFFF726D)
YUV	155.5890, -22.9684, 87.1834
Hunter-Lab	58.6505, 49.5881, 22.3825

Details

The Hex color **FF726D** is a light color, and the websafe version is hex **FF6666**. A complement of this color would be **6DFAFF**, and the grayscale version is **9C9C9C**.

A 20% lighter version of the original color is **FFAAA1**, and **C13B3D** is the 20% darker color. If you saturate the color by 10%, you get **FF5954**, and if you desaturate by 10%, it is **FF8B87**.

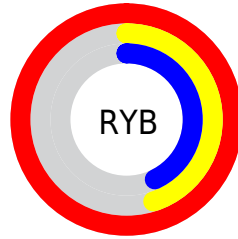
Distribution



Red (100%)

Green (45%)

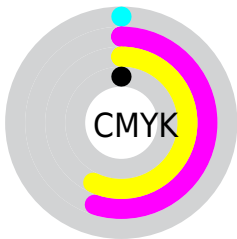
Blue (43%)



Red (100%)

Yellow (45%)

Blue (43%)

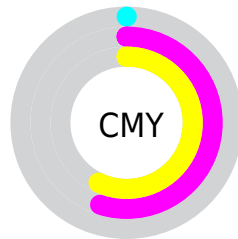


Cyan (0%)

Magenta (55%)

Yellow (57%)

Black (0%)



Cyan (0%)

Magenta (55%)

Yellow (57%)

Brightness & Saturation Gradients

These gradients show how the Hex color FF726D changes by changing the brightness by 10 percent. The first figure shows a shift by +10% for each color and the second figure -10%.

Similar to the brightness gradients but the following saturation gradients show a change of the Hex color FF726D by changing the saturation by 10% instead.

 FF726D

 FF726D

FFFFFF

 E05755

 FFAAA1

 C13B3D

 FFC6BC

 A21B27

 FFE3D7

 840013

 FFFFF4

 660000

 490000

 2D0001

 000000

 FF726D

 FF726D

■ FF5954

■ FF8B87

■ FF413A

■ FFA3A0

■ FF2821

■ FFBCBA

■ FF0F07

■ FFD5D3

■ FF0900

■ FFEDED

FFFFFF

Harmonies

Analogous

The Analogous color harmony consists of three colors that are next to each other on the color wheel.



FE6CA3



FF726D



E78640

Triad

The Triadic color harmony groups three colors that are evenly spaced from another and form a triangle on the color wheel.



FF726D



36B463



00A5FF

Complementary

The Complementary color scheme is a pair of colors which are on the opposite of each other on the color wheel.



FF726D



6DFAFF

Split Complementary

Split-complementary colors differ from the complementary color scheme. The scheme consists of three colors, the original color and two neighbors of the complement color.



00B2FB



FF726D



00B89B

Square

The Square scheme is like the rectangle color scheme, but the four colors are evenly spaced on the color wheel.



FF726D



87AB37



00B8D2



9B91FE

Rectangle

The Rectangle color scheme consists of four colors that form a rectangle on the color wheel.



FF726D



CC952B



00B8D2



00AAFF

Sweetspot

The Sweet Spot groups the original color and five complimentary colors.



FF726D



FFD5D4



FF6DFA



806766



000000



808080

Same Dimension

The Same Dimension uses a secret algorithm to generate beautiful new colors.



FF726D



FF554F



FFBB6D



807373



BF0700



400200

Inverse Universe

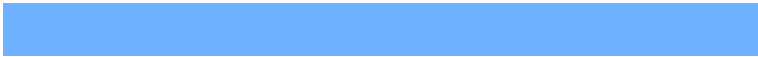
The Inverse Universe completely reimagines the original color for something new.



6DFAFF



4FF9FF



6DB1FF



737F80



00B9BF



003E40

Previews

White Background



This preview shows how the Hex color FF726D looks on a white background.

Color Contrast Check

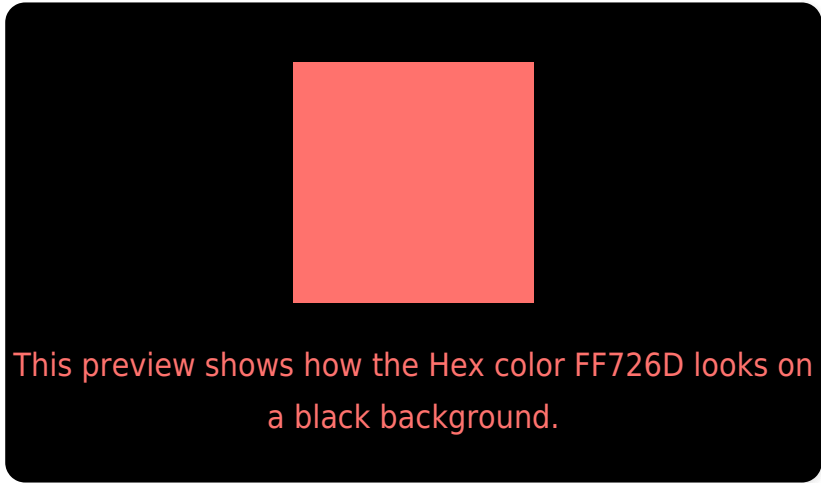
Large Text (above 18pt) WCAG AA × Fail

Any Text WCAG AA × Fail

Large Text (above 18pt) WCAG AAA × Fail

Any Text WCAG AAA × Fail

Black Background



Color Contrast Check

Large Text (above 18pt) WCAG AA ✓ Pass

Any Text WCAG AA ✓ Pass

Large Text (above 18pt) WCAG AAA ✓ Pass

Any Text WCAG AAA ✓ Pass

If you want to check with other color combinations, try the [Color Contrast Checker](#).

Hex FF726D Background



This preview shows how black text looks on a background with the Hex color FF726D.



This preview shows how white text looks on a background with the Hex color FF726D.

Color Blindness Simulation

Color vision deficiency is a very complex topic, and I could not describe the different causes any better than Wikipedia does, so if you want to learn more, you should check out their [article about color blindness](#).

Dichromacy



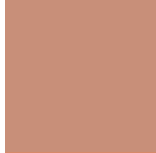


Tritanopia
FF7178

Trichromacy



Original Color
FF726D



Protanomaly
C88F79



Deuteranomaly
D68A69



Tritanomaly
FF7174

Monochromacy



Original Color
FF726D



Achromatopsia
9C9C9C



Achromatomaly
C08D8B

CSS Examples

Text

The CSS property to change the color of the text to Hex FF726D is called "color". The color property can be set on classes, ids or directly on the HTML element.

This example shows how text in the color #FF726D looks like.

```
.text, #text, p{  
    color:#FF726D  
}
```

If you want to add a text shadow in that color use the text-shadow property, you can generate a text shadow directly with our [CSS Text Shadow Generator](#).

Here you see how black text with a 4 pixel #FF726D colored shadow looks like.

```
.shadow{ text-shadow: 4px 4px 2px #FF726D
}
```

Border

The CSS property to change the border of an element to Hex FF726D is called "border". The border property can be set on classes, ids or directly on the HTML element.

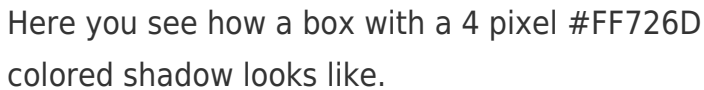
This example shows the color as border, it can be applied via the CSS property "border" or "border-color".

```
.border, #border, table{ border:4px solid
#FF726D }
```

If only the border color should be changed use the property `border-color`.

```
.border{ border-color:#FF726D }
```

If you want to add a box shadow in that color use:



Here you see how a box with a 4 pixel `#FF726D` colored shadow looks like.

```
.boxshadow{ -moz-box-shadow:4px 4px 4px  
4px #FF726D; -webkit-box-shadow:4px 4px  
4px 4px #FF726D; box-shadow:4px 4px 4px  
4px #FF726D }
```

Background

The CSS property to change the background color of an element to Hex FF726D is called "background". The background property can be set on classes, ids or directly on the HTML element.

```
.background, #background, body{  
background:#FF726D }
```

If only the background color should be changed can be used:

```
.background{ background-color:#FF726D }
```

This example shows the color as background, it is applied via the CSS property "background".

To optimize and compress your CSS code, you can use our [online CSS compressor and optimizer](#) based on csstidy. If you want to create a linear or radial gradient as background or border, check our [CSS Gradient Generator](#).

Hey! You found this booklet interesting? Support Converting Colors with the new Membership Option!

The pro membership hides all ads, plus gives you double the colors in the color bucket, and more awesome pro features!

[Learn more, Memberships starting at \\$2.50/m!](#)

**Follow me
on Twitter!**

@ConvertingColor