

# Converting Colors

Hex(FF7343)

Have a look what the booklet for  
Hex(FF7343) contains.

<b>Hex(FF7343)</b> .....	3
<i><b>Conversions</b></i> .....	4
<i><b>Details</b></i> .....	6
<i><b>Harmonies</b></i> .....	11
<i><b>Previews</b></i> .....	23
<i><b>Color Blindness Simulation</b></i> .....	26
<i><b>CSS Examples</b></i> .....	29

**Color**

**Hex(F77343)**

# Conversions

## Conversions Part 1

Format	Color
Hex	FF7343
RGB	255, 115, 67
RGB Percent	100%, 45%, 26%
CMY	0.0000, 0.5490, 0.7373
CMYK	0.00, 0.55, 0.74, 0.00
HSL	15°, 100%, 63%
HSV	15°, 74%, 100%
XYZ	48.3839, 33.9267, 9.3086
YIQ	151.3880, 98.8480, 14.7520

# Conversions

## Conversions Part 2

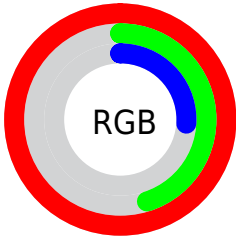
Format	Color
<a href="#">RYB</a>	<a href="#">255, 131, 67</a>
Decimal	<a href="#">16741187</a>
CIELab	<a href="#">64.90, 50.51, 51.38</a>
CIELCh	<a href="#">65, 72.049, 45.494</a>
Yxy	<a href="#">33.9267, 0.5281, 0.3703</a>
Android (android.graphics.Color)	<a href="#">4294931267 (0xFFFF7343)</a>
YUV	<a href="#">151.3880, -41.6033, 90.8677</a>
Hunter-Lab	<a href="#">58.2466, 46.3433, 31.2973</a>

# Details

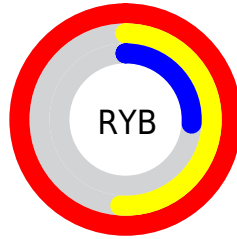
The Hex color **FF7343** is a dark color, and the websafe version is hex **FF6633**. The color can be described as middle washed orange. A complement of this color would be **43CFFF**, and the grayscale version is **989898**.

A 20% lighter version of the original color is **FFAA75**, and **BF3D11** is the 20% darker color. If you saturate the color by 10%, you get **FF6029**, and if you desaturate by 10%, it is **FF865C**.

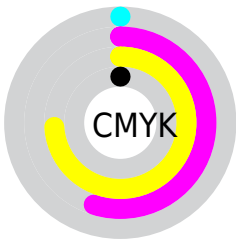
# Distribution



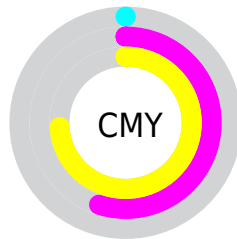
- Red (100%)
- Green (45%)
- Blue (26%)



- Red (100%)
- Yellow (51%)
- Blue (26%)



- Cyan (0%)
- Magenta (55%)
- Yellow (74%)
- Black (0%)



- Cyan (0%)
- Magenta (55%)
- Yellow (74%)

# Brightness & Saturation Gradients

These gradients show how the Hex color FF7343 changes by changing the brightness by 10 percent. The first figure shows a shift by +10% for each color and the second figure -10%.

Similar to the brightness gradients but the following saturation gradients show a change of the Hex color FF7343 by changing the saturation by 10% instead.



 FF7343

 FF7343

FFFFFF

 DF582B

 FFAA75

 BF3D11

 FFC690

 A01F00

 FFE3AB

 810000

 FFFFC6

 630000

 FFFF E3

 450000

 290001

 000000

 FF7343

 FF7343

 FF6029

 FF865C

 FF4D10

 FF9976

 FF4100

 FFAC90

 FFBFA9

 FFD2C3

 FFE5DC

 FFF8F5

FFFFFF

# Harmonies

## Analogous

The Analogous color harmony consists of three colors that are next to each other on the color wheel.



FF5C7F



FF7343



D68F02

# Triad

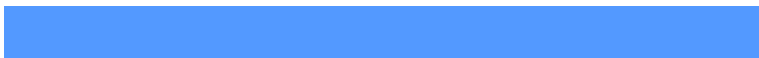
The Triadic color harmony groups three colors that are evenly spaced from another and form a triangle on the color wheel.



FF7343



00B97B



5399FF

# Complementary

The Complementary color scheme is a pair of colors which are on the opposite of each other on the color wheel.



FF7343



43CFFF

# Split Complementary

Split-complementary colors differ from the complementary color scheme. The scheme consists of three colors, the original color and two neighbors of the complement color.



00AEFF



FF7343



00BBBE

# Square

The Square scheme is like the rectangle color scheme, but the four colors are evenly spaced on the color wheel.



FF7343



4FB23B



00B8F8



CA7CF9

# Rectangle

The Rectangle color scheme consists of four colors that form a rectangle on the color wheel.



FF7343



B19E00



00B8F8



00A1FF



# Sweetspot

The Sweet Spot groups the original color and five complimentary colors.



FF7343



FFD5C7



FF43D0



80675E



000000



808080



# Same Dimension

The Same Dimension uses a secret algorithm to generate beautiful new colors.



FF7343



FF581F



FFD043



807673



BF3100

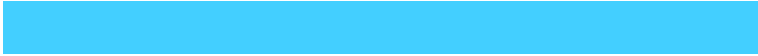


401000



# Inverse Universe

The Inverse Universe completely reimagines the original color for something new.



43CFFF



1FC6FF



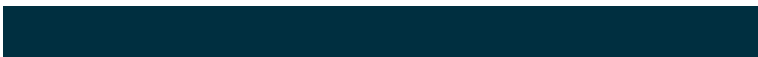
4372FF



737C80



008EBF



002F40



# Previews

## White Background



This preview shows how the Hex color FF7343 looks on a white background.

## Color Contrast Check

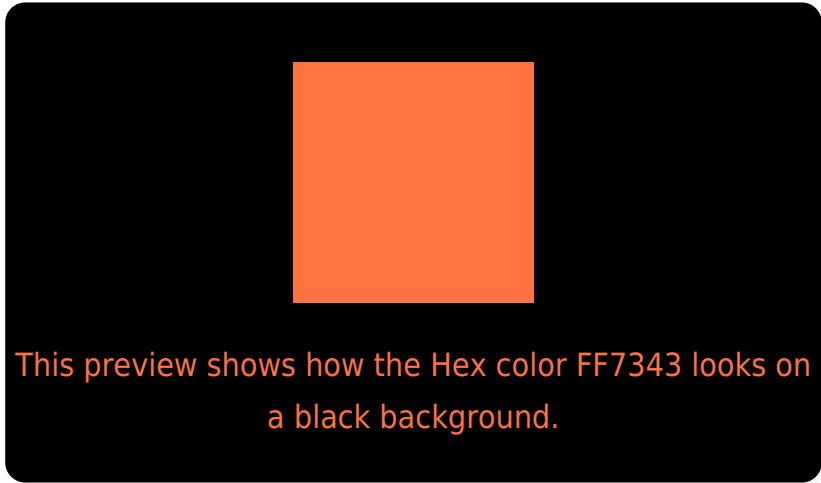
Large Text (above 18pt) WCAG AA × Fail

Any Text WCAG AA × Fail

Large Text (above 18pt) WCAG AAA × Fail

Any Text WCAG AAA × Fail

# Black Background



## Color Contrast Check

Large Text (above 18pt) WCAG AA ✓ Pass

Any Text WCAG AA ✓ Pass

Large Text (above 18pt) WCAG AAA ✓ Pass

Any Text WCAG AAA ✓ Pass

If you want to check with other color combinations, try the [Color Contrast Checker](#).



## Hex FF7343 Background



This preview shows how black text looks on a background with the Hex color FF7343.



This preview shows how white text looks on a background with the Hex color FF7343.

# Color Blindness Simulation

Color vision deficiency is a very complex topic, and I could not describe the different causes any better than Wikipedia does, so if you want to learn more, you should check out their [article about color blindness](#).

## Dichromacy



**Original Color**  
FF7343

**Protanopia**  
AE9E50

**Deuteranopia**  
C5963A



**Tritanopia**  
FF6F76

# Trichromacy



**Original Color**  
FF7343



**Protanomaly**  
CB8E4B



**Deuteranomaly**  
DA893D



**Tritanomaly**  
FF7063

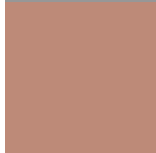
# Monochromacy



**Original Color**  
FF7343



**Achromatopsia**  
979797



**Achromatomaly**  
BD8A78

# CSS Examples

## Text

The CSS property to change the color of the text to Hex FF7343 is called "color". The color property can be set on classes, ids or directly on the HTML element.

This example shows how text in the color #FF7343 looks like.

```
.text, #text, p{  
    color:#FF7343  
}
```

If you want to add a text shadow in that color use the text-shadow property, you can generate a text shadow directly with our [CSS Text Shadow Generator](#).

Here you see how black text with a 4 pixel #FF7343 colored shadow looks like.

```
.shadow{ text-shadow: 4px 4px 2px #FF7343
}
```

## Border

The CSS property to change the border of an element to Hex FF7343 is called "border". The border property can be set on classes, ids or directly on the HTML element.

This example shows the color as border, it can be applied via the CSS property "border" or "border-color".

```
.border, #border, table{ border:4px solid
#FF7343 }
```

If only the border color should be changed use the property `border-color`.

```
.border{ border-color:#FF7343 }
```

If you want to add a box shadow in that color use:

Here you see how a box with a 4 pixel #FF7343 colored shadow looks like.

```
.boxshadow{ -moz-box-shadow:4px 4px 4px  
4px #FF7343; -webkit-box-shadow:4px 4px  
4px 4px #FF7343; box-shadow:4px 4px 4px  
4px #FF7343 }
```

# Background

The CSS property to change the background color of an element to Hex FF7343 is called "background". The background property can be set on classes, ids or directly on the HTML element.

```
.background, #background, body{  
background:#FF7343 }
```

If only the background color should be changed can be used:

```
.background{ background-color:#FF7343 }
```

This example shows the color as background, it is applied via the CSS property "background".

To optimize and compress your CSS code, you can use our [online CSS compressor and optimizer](#) based on csstidy. If you want to create a linear or radial gradient as background or border, check our [CSS Gradient Generator](#).



Hey! You found this booklet interesting? Support Converting Colors with the new Membership Option!

The pro membership hides all ads, plus gives you double the colors in the color bucket, and more awesome pro features!

**[Learn more, Memberships starting at \\$2.50/m!](#)**

**Follow me  
on Twitter!**

@ConvertingColor