

Converting Colors

Hex(FF736E)

Have a look what the booklet for
Hex(FF736E) contains.

Hex(FF736E)	3
<i>Conversions</i>	4
<i>Details</i>	6
<i>Harmonies</i>	11
<i>Previews</i>	23
<i>Color Blindness Simulation</i>	26
<i>CSS Examples</i>	29

Color

Hex(F736E)

Conversions

Conversions Part 1

Format	Color
Hex	FF736E
RGB	255, 115, 110
RGB Percent	100%, 45%, 43%
CMY	0.0000, 0.5490, 0.5686
CMYK	0.00, 0.55, 0.57, 0.00
HSL	2°, 100%, 72%
HSV	2°, 57%, 100%
XYZ	50.1852, 34.6473, 18.7944
YIQ	156.2900, 85.0450, 28.1250

Conversions

Conversions Part 2

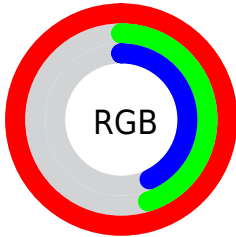
Format	Color
RYB	255, 115, 110
Decimal	16741230
CIELab	65.47, 52.95, 29.11
CIELCh	65, 60.424, 28.804
Yxy	34.6473, 0.4843, 0.3343
Android (android.graphics.Color)	4294931310 (0xFFFF736E)
YUV	156.2900, -22.8210, 86.5687
Hunter-Lab	58.8619, 49.1793, 22.2723

Details

The Hex color **FF736E** is a light color, and the websafe version is hex **FF6666**. A complement of this color would be **6EFAFF**, and the grayscale version is **9C9C9C**.

A 20% lighter version of the original color is **FFABA2**, and **C13C3E** is the 20% darker color. If you saturate the color by 10%, you get **FF5A55**, and if you desaturate by 10%, it is **FF8C88**.

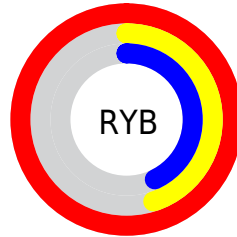
Distribution



Red (100%)

Green (45%)

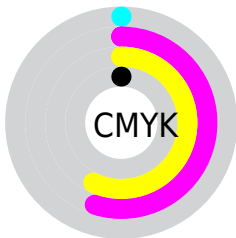
Blue (43%)



Red (100%)

Yellow (45%)

Blue (43%)

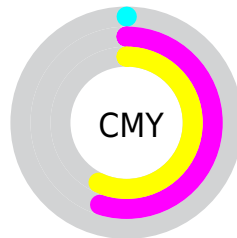


Cyan (0%)

Magenta (55%)

Yellow (57%)

Black (0%)



Cyan (0%)

Magenta (55%)

Yellow (57%)

Brightness & Saturation Gradients

These gradients show how the Hex color FF736E changes by changing the brightness by 10 percent. The first figure shows a shift by +10% for each color and the second figure -10%.

Similar to the brightness gradients but the following saturation gradients show a change of the Hex color FF736E by changing the saturation by 10% instead.

 FF736E

 FF736E

FFFFFF

 E05856

 FFABA2

 C13C3E

 FFC7BD

 A21D28

 FFE4D9

 840014

 FFFFF5

 670000

 490000

 2D0001

 000000

 FF736E

 FF736E

 FF5A55

 FF8C88

 FF423B

 FFA4A1

 FF2921

 FFBDBB

 FF1108

 FFD5D4

 FF0900

 FFE0E0

FFFFFF

Harmonies

Analogous

The Analogous color harmony consists of three colors that are next to each other on the color wheel.



FE6DA3



FF736E



E78742

Triad

The Triadic color harmony groups three colors that are evenly spaced from another and form a triangle on the color wheel.



FF736E



39B564



00A6FF

Complementary

The Complementary color scheme is a pair of colors which are on the opposite of each other on the color wheel.



FF736E



6EFAFF

Split Complementary

Split-complementary colors differ from the complementary color scheme. The scheme consists of three colors, the original color and two neighbors of the complement color.



00B3FB



FF736E



00B99B

Square

The Square scheme is like the rectangle color scheme, but the four colors are evenly spaced on the color wheel.



FF736E



88AB38



00B8D2



9C92FE

Rectangle

The Rectangle color scheme consists of four colors that form a rectangle on the color wheel.



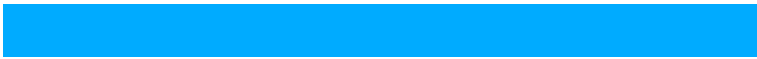
FF736E



CD952D



00B8D2



00ABFF

Sweetspot

The Sweet Spot groups the original color and five complimentary colors.



FF736E



FFD5D4



FF6EFA



806766



000000



808080

Same Dimension

The Same Dimension uses a secret algorithm to generate beautiful new colors.



FF736E



FF5852



FFBB6E



807373



BF0700



400200

Inverse Universe

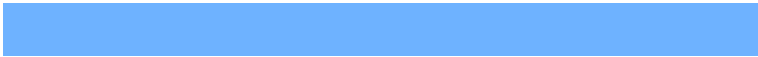
The Inverse Universe completely reimagines the original color for something new.



6EFAFF



52F9FF



6EB2FF



737F80



00B9BF



003E40

Previews

White Background



This preview shows how the Hex color FF736E looks on a white background.

Color Contrast Check

Large Text (above 18pt) WCAG AA × Fail

Any Text WCAG AA × Fail

Large Text (above 18pt) WCAG AAA × Fail

Any Text WCAG AAA × Fail

Black Background



Color Contrast Check

Large Text (above 18pt) WCAG AA ✓ Pass

Any Text WCAG AA ✓ Pass

Large Text (above 18pt) WCAG AAA ✓ Pass

Any Text WCAG AAA ✓ Pass

If you want to check with other color combinations, try the [Color Contrast Checker](#).

Hex FF736E Background



This preview shows how black text looks on a background with the Hex color FF736E.



This preview shows how white text looks on a background with the Hex color FF736E.

Color Blindness Simulation

Color vision deficiency is a very complex topic, and I could not describe the different causes any better than Wikipedia does, so if you want to learn more, you should check out their [article about color blindness](#).

Dichromacy



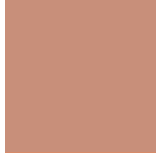


Tritanopia
FF7279

Trichromacy



Original Color
FF736E



Protanomaly
C88F7A



Deuteranomaly
D78B6A



Tritanomaly
FF7275

Monochromacy



Original Color
FF736E



Achromatopsia
9C9C9C



Achromatomaly
C08D8B

CSS Examples

Text

The CSS property to change the color of the text to Hex FF736E is called "color". The color property can be set on classes, ids or directly on the HTML element.

This example shows how text in the color #FF736E looks like.

```
.text, #text, p{  
    color:#FF736E  
}
```

If you want to add a text shadow in that color use the text-shadow property, you can generate a text shadow directly with our [CSS Text Shadow Generator](#).

Here you see how black text with a 4 pixel #FF736E colored shadow looks like.

```
.shadow{ text-shadow: 4px 4px 2px #FF736E
}
```

Border

The CSS property to change the border of an element to Hex FF736E is called "border". The border property can be set on classes, ids or directly on the HTML element.

This example shows the color as border, it can be applied via the CSS property "border" or "border-color".

```
.border, #border, table{ border:4px solid
#FF736E }
```

If only the border color should be changed use the property `border-color`.

```
.border{ border-color:#FF736E }
```

If you want to add a box shadow in that color use:

Here you see how a box with a 4 pixel #FF736E colored shadow looks like.

```
.boxshadow{ -moz-box-shadow:4px 4px 4px  
4px #FF736E; -webkit-box-shadow:4px 4px  
4px 4px #FF736E; box-shadow:4px 4px 4px  
4px #FF736E }
```

Background

The CSS property to change the background color of an element to Hex FF736E is called "background". The background property can be set on classes, ids or directly on the HTML element.

```
.background, #background, body{  
background:#FF736E }
```

If only the background color should be changed can be used:

```
.background{ background-color:#FF736E }
```

This example shows the color as background, it is applied via the CSS property "background".

To optimize and compress your CSS code, you can use our [online CSS compressor and optimizer](#) based on csstidy. If you want to create a linear or radial gradient as background or border, check our [CSS Gradient Generator](#).

Hey! You found this booklet interesting? Support Converting Colors with the new Membership Option!

The pro membership hides all ads, plus gives you double the colors in the color bucket, and more awesome pro features!

[Learn more, Memberships starting at \\$2.50/m!](#)

**Follow me
on Twitter!**

@ConvertingColor