

Converting Colors

Hex(FF7390)

Have a look what the booklet for
Hex(FF7390) contains.

Hex(FF7390)	3
<i>Conversions</i>	4
<i>Details</i>	6
<i>Harmonies</i>	11
<i>Previews</i>	23
<i>Color Blindness Simulation</i>	26
<i>CSS Examples</i>	29

Color

Hex(F77390)

Conversions

Conversions Part 1

Format	Color
Hex	FF7390
RGB	255, 115, 144
RGB Percent	100%, 45%, 56%
CMY	0.0000, 0.5490, 0.4353
CMYK	0.00, 0.55, 0.44, 0.00
HSL	348°, 100%, 73%
HSV	348°, 55%, 100%
XYZ	52.4048, 35.5351, 30.4825
YIQ	160.1660, 74.1310, 38.6990

Conversions

Conversions Part 2

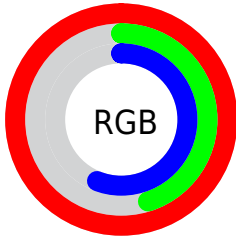
Format	Color
R _Y B	255, 115, 144
Decimal	16741264
CIE Lab	66.16, 55.85, 10.82
CIE LCh	66, 56.885, 10.970
Yxy	35.5351, 0.4425, 0.3001
Android (android.graphics.Color)	4294931344 (0xFFFF7390)
YUV	160.1660, -7.9698, 83.1694
Hunter-Lab	59.6113, 52.6010, 11.4097

Details

The Hex color **FF7390** is a light color, and the websafe version is hex **FF6699**. A complement of this color would be **73FFE2**, and the grayscale version is **A0A0A0**.

A 20% lighter version of the original color is **FFABC6**, and **C23B5E** is the 20% darker color. If you saturate the color by 10%, you get **FF5A7C**, and if you desaturate by 10%, it is **FF8DA4**.

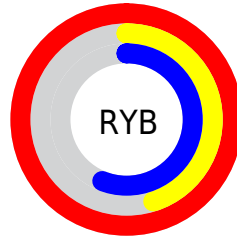
Distribution



Red (100%)

Green (45%)

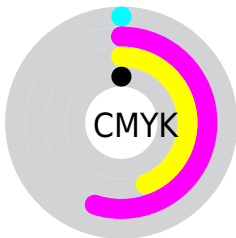
Blue (56%)



Red (100%)

Yellow (45%)

Blue (56%)

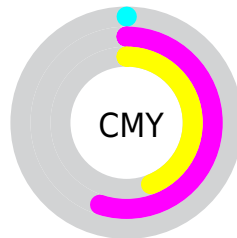


Cyan (0%)

Magenta (55%)

Yellow (44%)

Black (0%)



Cyan (0%)

Magenta (55%)

Yellow (44%)

Brightness & Saturation Gradients

These gradients show how the Hex color FF7390 changes by changing the brightness by 10 percent. The first figure shows a shift by +10% for each color and the second figure -10%.

Similar to the brightness gradients but the following saturation gradients show a change of the Hex color FF7390 by changing the saturation by 10% instead.

 FF7390

 FF7390

FFFFFF

 E05776

 FFABC6

 C23B5E

 FFC8E2

 A41A46

 FFE5FE

 870030

 69001C

 4D0000

 310002

 000000

 FF7390

 FF7390

 FF5A7C

 FF8DA4

 FF4068

 FFA6B8

 FF2653

 FFC0CD

 FF0D3F

 FFD9E1

 FF0035

 FFF3F5

FFFFFF

Harmonies

Analogous

The Analogous color harmony consists of three colors that are next to each other on the color wheel.



ED79C3



FF7390



F67F60

Triad

The Triadic color harmony groups three colors that are evenly spaced from another and form a triangle on the color wheel.



FF7390



73B150



00AFFF

Complementary

The Complementary color scheme is a pair of colors which are on the opposite of each other on the color wheel.



FF7390



73FFE2

Split Complementary

Split-complementary colors differ from the complementary color scheme. The scheme consists of three colors, the original color and two neighbors of the complement color.



00B8E3



FF7390



00B87E

Square

The Square scheme is like the rectangle color scheme, but the four colors are evenly spaced on the color wheel.



FF7390



ABA435



00BAB3



65A0FF

Rectangle

The Rectangle color scheme consists of four colors that form a rectangle on the color wheel.



FF7390



E38C47



00BAB3



00B3F9

Sweetspot

The Sweet Spot groups the original color and five complimentary colors.



FF7390



FFD6DF



E173FF



80676C



000000



808080

Same Dimension

The Same Dimension uses a secret algorithm to generate beautiful new colors.



FF7390



FF577A



FF9B73



807375



BF0028



40000D

Inverse Universe

The Inverse Universe completely reimagines the original color for something new.



FF7390



FF577A



73D7FF



807375



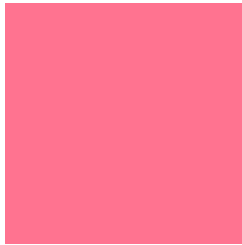
BF0028



40000D

Previews

White Background



This preview shows how the Hex color FF7390 looks on a white background.

Color Contrast Check

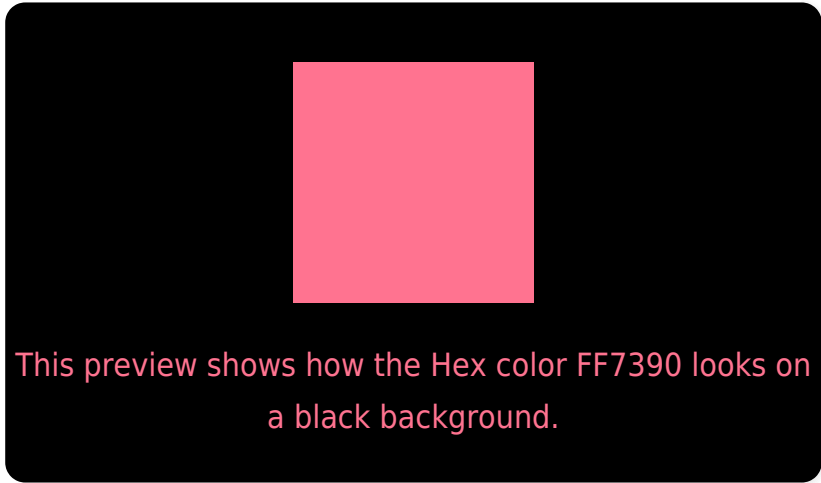
Large Text (above 18pt) WCAG AA × Fail

Any Text WCAG AA × Fail

Large Text (above 18pt) WCAG AAA × Fail

Any Text WCAG AAA × Fail

Black Background



Color Contrast Check

Large Text (above 18pt) WCAG AA ✓ Pass

Any Text WCAG AA ✓ Pass

Large Text (above 18pt) WCAG AAA ✓ Pass

Any Text WCAG AAA ✓ Pass

If you want to check with other color combinations, try the [Color Contrast Checker](#).

Hex FF7390 Background



This preview shows how black text looks on a background with the Hex color FF7390.

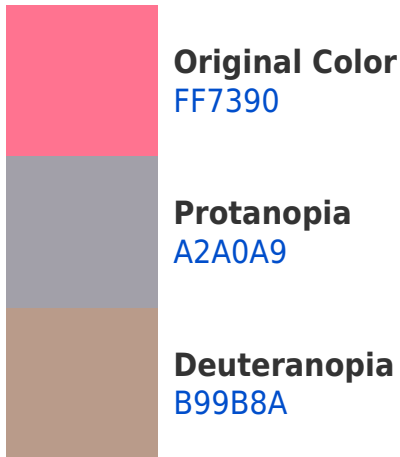


This preview shows how white text looks on a background with the Hex color FF7390.

Color Blindness Simulation

Color vision deficiency is a very complex topic, and I could not describe the different causes any better than Wikipedia does, so if you want to learn more, you should check out their [article about color blindness](#).

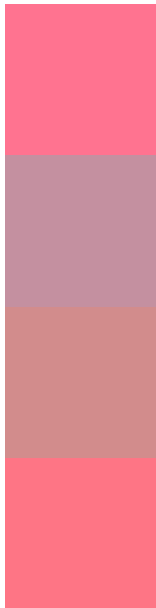
Dichromacy





Tritanopia
FE767E

Trichromacy



Original Color
FF7390

Protanomaly
C490A0

Deuteranomaly
D28C8C

Tritanomaly
FE7585

Monochromacy



Original Color
FF7390

Achromatopsia
A0A0A0

Achromatomaly
C3909A

CSS Examples

Text

The CSS property to change the color of the text to Hex FF7390 is called "color". The color property can be set on classes, ids or directly on the HTML element.

This example shows how text in the color #FF7390 looks like.

```
.text, #text, p{  
    color:#FF7390  
}
```

If you want to add a text shadow in that color use the text-shadow property, you can generate a text shadow directly with our [CSS Text Shadow Generator](#).

Here you see how black text with a 4 pixel #FF7390 colored shadow looks like.

```
.shadow{ text-shadow: 4px 4px 2px #FF7390  
}
```

Border

The CSS property to change the border of an element to Hex FF7390 is called "border". The border property can be set on classes, ids or directly on the HTML element.

This example shows the color as border, it can be applied via the CSS property "border" or "border-color".

```
.border, #border, table{ border:4px solid  
#FF7390 }
```

If only the border color should be changed use the property `border-color`.

```
.border{ border-color:#FF7390 }
```

If you want to add a box shadow in that color use:

Here you see how a box with a 4 pixel #FF7390 colored shadow looks like.

```
.boxshadow{ -moz-box-shadow:4px 4px 4px  
4px #FF7390; -webkit-box-shadow:4px 4px  
4px 4px #FF7390; box-shadow:4px 4px 4px  
4px #FF7390 }
```

Background

The CSS property to change the background color of an element to Hex FF7390 is called "background". The background property can be set on classes, ids or directly on the HTML element.

```
.background, #background, body{  
background:#FF7390 }
```

If only the background color should be changed can be used:

```
.background{ background-color:#FF7390 }
```

This example shows the color as background, it is applied via the CSS property "background".

To optimize and compress your CSS code, you can use our [online CSS compressor and optimizer](#) based on csstidy. If you want to create a linear or radial gradient as background or border, check our [CSS Gradient Generator](#).

Hey! You found this booklet interesting? Support Converting Colors with the new Membership Option!

The pro membership hides all ads, plus gives you double the colors in the color bucket, and more awesome pro features!

[Learn more, Memberships starting at \\$2.50/m!](#)

**Follow me
on Twitter!**

@ConvertingColor