

Converting Colors

Hex(FF7744)

Have a look what the booklet for
Hex(FF7744) contains.

Hex(FF7744)	3
<i>Conversions</i>	4
<i>Details</i>	6
<i>Harmonies</i>	11
<i>Previews</i>	23
<i>Color Blindness Simulation</i>	26
<i>CSS Examples</i>	29

Color

Hex(F77744)

Conversions

Conversions Part 1

Format	Color
Hex	FF7744
RGB	255, 119, 68
RGB Percent	100%, 47%, 27%
CMY	0.0000, 0.5333, 0.7333
CMYK	0.00, 0.53, 0.73, 0.00
HSL	16°, 100%, 63%
HSV	16°, 73%, 100%
XYZ	48.8802, 34.8710, 9.6233
YIQ	153.8500, 97.4270, 12.9710

Conversions

Conversions Part 2

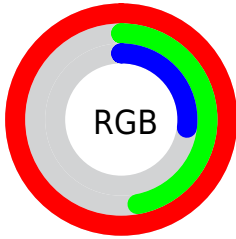
Format	Color
RYB	255, 138, 68
Decimal	16742212
CIELab	65.65, 48.66, 51.68
CIElCh	66, 70.987, 46.727
Yxy	34.8710, 0.5235, 0.3735
Android (android.graphics.Color)	4294932292 (0xFFFF7744)
YUV	153.8500, -42.3240, 88.7086
Hunter-Lab	59.0517, 44.4135, 31.6740

Details

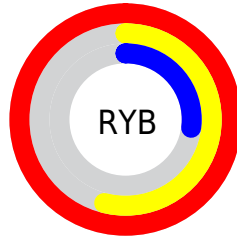
The Hex color **FF7744** is a dark color, and the websafe version is hex **FF6633**. The color can be described as middle washed orange. A complement of this color would be **44CCFF**, and the grayscale version is **9A9A9A**.

A 20% lighter version of the original color is **FFAE77**, and **BF4112** is the 20% darker color. If you saturate the color by 10%, you get **FF642A**, and if you desaturate by 10%, it is **FF8A5D**.

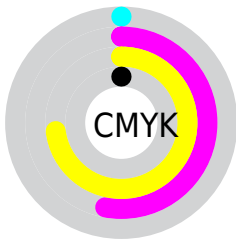
Distribution



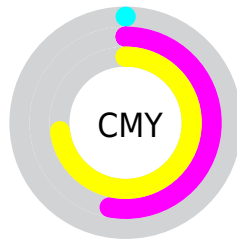
- Red (100%)
- Green (47%)
- Blue (27%)



- Red (100%)
- Yellow (54%)
- Blue (27%)



- Cyan (0%)
- Magenta (53%)
- Yellow (73%)
- Black (0%)



- Cyan (0%)
- Magenta (53%)
- Yellow (73%)

Brightness & Saturation Gradients

These gradients show how the Hex color FF7744 changes by changing the brightness by 10 percent. The first figure shows a shift by +10% for each color and the second figure -10%.

Similar to the brightness gradients but the following saturation gradients show a change of the Hex color FF7744 by changing the saturation by 10% instead.

 FF7744

 FF7744

FFFFFF

 DF5C2B

 FFAE77

 BF4112

 FFCA91

 A02500

 FFE7AC

 820000

 FFFFC8

 630000

 FFFFE4

 460000

 2B0001

 000000

 FF7744

 FF7744

■ FF642A

■ FF8A5D

■ FF5211

■ FF9C77

■ FF4600

■ FFAF91

■ FFC1AA

■ FFD4C3

■ FFE6DD

■ FFF9F6

FFFFFF

Harmonies

Analogous

The Analogous color harmony consists of three colors that are next to each other on the color wheel.



FF617F



FF7744



D6920A

Triad

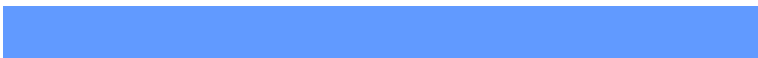
The Triadic color harmony groups three colors that are evenly spaced from another and form a triangle on the color wheel.



FF7744



00BB80



619AFF

Complementary

The Complementary color scheme is a pair of colors which are on the opposite of each other on the color wheel.



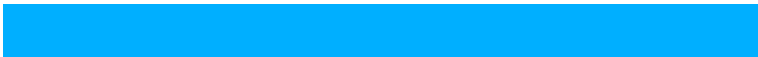
FF7744



44CCFF

Split Complementary

Split-complementary colors differ from the complementary color scheme. The scheme consists of three colors, the original color and two neighbors of the complement color.



00AFFF



FF7744



00BDC2

Square

The Square scheme is like the rectangle color scheme, but the four colors are evenly spaced on the color wheel.



FF7744



4FB441



00BAFB



CF7EF8

Rectangle

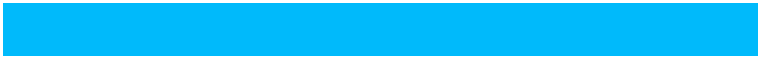
The Rectangle color scheme consists of four colors that form a rectangle on the color wheel.



FF7744



B1A100



00BAFB



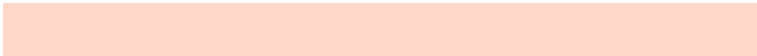
00A2FF

Sweetspot

The Sweet Spot groups the original color and five complimentary colors.



FF7744



FFD6C7



FF44CD



80675E



000000



808080

Same Dimension

The Same Dimension uses a secret algorithm to generate beautiful new colors.



FF7744



FF5C1F



FFD344



807673



BF3400



401100

Inverse Universe

The Inverse Universe completely reimagines the original color for something new.



44CCFF



1FC2FF



4470FF



737C80



008BBF



002E40

Previews

White Background



This preview shows how the Hex color FF7744 looks on a white background.

Color Contrast Check

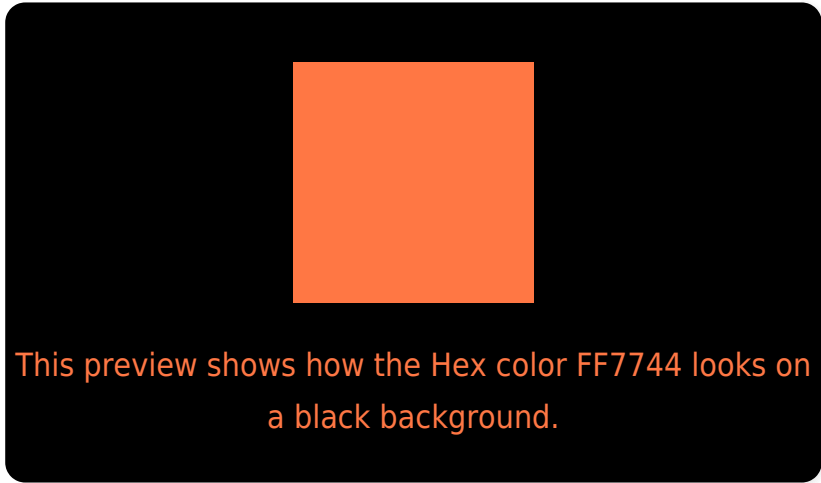
Large Text (above 18pt) WCAG AA × Fail

Any Text WCAG AA × Fail

Large Text (above 18pt) WCAG AAA × Fail

Any Text WCAG AAA × Fail

Black Background



Color Contrast Check

Large Text (above 18pt) WCAG AA ✓ Pass

Any Text WCAG AA ✓ Pass

Large Text (above 18pt) WCAG AAA ✓ Pass

Any Text WCAG AAA ✓ Pass

If you want to check with other color combinations, try the [Color Contrast Checker](#).

Hex FF7744 Background



This preview shows how black text looks on a background with the Hex color FF7744.



This preview shows how white text looks on a background with the Hex color FF7744.

Color Blindness Simulation

Color vision deficiency is a very complex topic, and I could not describe the different causes any better than Wikipedia does, so if you want to learn more, you should check out their [article about color blindness](#).

Dichromacy



Original Color
FF7744

Protanopia
B1A051

Deuteranopia
C7983C



Tritanopia
FF737A

Trichromacy



Original Color
FF7744



Protanomaly
CD914C



Deuteranomaly
DB8C3F



Tritanomaly
FF7466

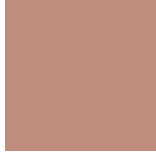
Monochromacy



Original Color
FF7744



Achromatopsia
9A9A9A



Achromatomaly
BF8D7B

CSS Examples

Text

The CSS property to change the color of the text to Hex FF7744 is called "color". The color property can be set on classes, ids or directly on the HTML element.

This example shows how text in the color #FF7744 looks like.

```
.text, #text, p{  
    color:#FF7744  
}
```

If you want to add a text shadow in that color use the text-shadow property, you can generate a text shadow directly with our [CSS Text Shadow Generator](#).

Here you see how black text with a 4 pixel #FF7744 colored shadow looks like.

```
.shadow{ text-shadow: 4px 4px 2px #FF7744
}
```

Border

The CSS property to change the border of an element to Hex FF7744 is called "border". The border property can be set on classes, ids or directly on the HTML element.

This example shows the color as border, it can be applied via the CSS property "border" or "border-color".

```
.border, #border, table{ border:4px solid
#FF7744 }
```

If only the border color should be changed use the property `border-color`.

```
.border{ border-color:#FF7744 }
```

If you want to add a box shadow in that color use:

Here you see how a box with a 4 pixel #FF7744 colored shadow looks like.

```
.boxshadow{ -moz-box-shadow:4px 4px 4px  
4px #FF7744; -webkit-box-shadow:4px 4px  
4px 4px #FF7744; box-shadow:4px 4px 4px  
4px #FF7744 }
```

Background

The CSS property to change the background color of an element to Hex FF7744 is called "background". The background property can be set on classes, ids or directly on the HTML element.

```
.background, #background, body{  
background:#FF7744 }
```

If only the background color should be changed can be used:

```
.background{ background-color:#FF7744 }
```

This example shows the color as background, it is applied via the CSS property "background".

To optimize and compress your CSS code, you can use our [online CSS compressor and optimizer](#) based on csstidy. If you want to create a linear or radial gradient as background or border, check our [CSS Gradient Generator](#).

Hey! You found this booklet interesting? Support Converting Colors with the new Membership Option!

The pro membership hides all ads, plus gives you double the colors in the color bucket, and more awesome pro features!

[Learn more, Memberships starting at \\$2.50/m!](#)

**Follow me
on Twitter!**

@ConvertingColor