

Converting Colors

Hex(FF776E)

Have a look what the booklet for
Hex(FF776E) contains.

Hex(FF776E)	3
<i>Conversions</i>	4
<i>Details</i>	6
<i>Harmonies</i>	11
<i>Previews</i>	23
<i>Color Blindness Simulation</i>	26
<i>CSS Examples</i>	29

Color

Hex(F7776E)

Conversions

Conversions Part 1

Format	Color
Hex	FF776E
RGB	255, 119, 110
RGB Percent	100%, 47%, 43%
CMY	0.0000, 0.5333, 0.5686
CMYK	0.00, 0.53, 0.57, 0.00
HSL	4°, 100%, 72%
HSV	4°, 57%, 100%
XYZ	50.6513, 35.5794, 18.9498
YIQ	158.6380, 83.9450, 26.0330

Conversions

Conversions Part 2

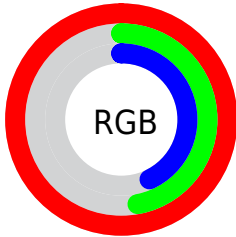
Format	Color
R_{YB}	255, 120, 110
Decimal	16742254
CIE _{Lab}	66.20, 51.07, 30.06
CIE _{LCh}	66, 59.261, 30.476
Yxy	35.5794, 0.4816, 0.3383
Android (android.graphics.Color)	4294932334 (0xFFFF776E)
YUV	158.6380, -23.9785, 84.5095
Hunter-Lab	59.6485, 47.1907, 22.9181

Details

The Hex color **FF776E** is a light color, and the websafe version is hex **FF6666**. A complement of this color would be **6EF6FF**, and the grayscale version is **9F9F9F**.

A 20% lighter version of the original color is **FFAEA2**, and **C1413E** is the 20% darker color. If you saturate the color by 10%, you get **FF5F55**, and if you desaturate by 10%, it is **FF8F88**.

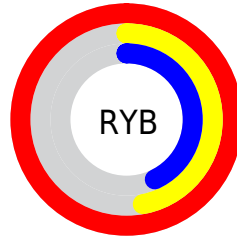
Distribution



Red (100%)

Green (47%)

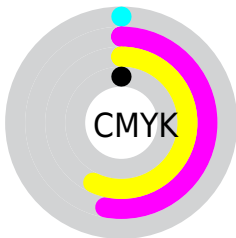
Blue (43%)



Red (100%)

Yellow (47%)

Blue (43%)

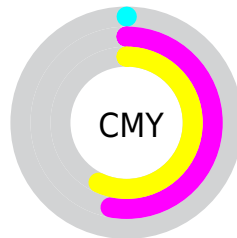


Cyan (0%)

Magenta (53%)

Yellow (57%)

Black (0%)



Cyan (0%)

Magenta (53%)

Yellow (57%)

Brightness & Saturation Gradients

These gradients show how the Hex color FF776E changes by changing the brightness by 10 percent. The first figure shows a shift by +10% for each color and the second figure -10%.

Similar to the brightness gradients but the following saturation gradients show a change of the Hex color FF776E by changing the saturation by 10% instead.

 FF776E

 FF776E

FFFFFF

 E05C56

 FFAEA2

 C1413E

 FFCBBD

 A22328

 FFE8D9

 840013

 FFFFF5

 670000

 490000

 2E0002

 000000

 FF776E

 FF776E

■ FF5F55

■ FF8F88

■ FF473B

■ FFA7A1

■ FF2F21

■ FFBFB8

■ FF1708

■ FFD7D4

■ FF1000

■ FFEFEE

FFFFFF

Harmonies

Analogous

The Analogous color harmony consists of three colors that are next to each other on the color wheel.



FF70A2



FF776E



E68A43

Triad

The Triadic color harmony groups three colors that are evenly spaced from another and form a triangle on the color wheel.



FF776E



38B76A



09A7FF

Complementary

The Complementary color scheme is a pair of colors which are on the opposite of each other on the color wheel.



FF776E



6EF6FF

Split Complementary

Split-complementary colors differ from the complementary color scheme. The scheme consists of three colors, the original color and two neighbors of the complement color.



00B4FD



FF776E



00BBA0

Square

The Square scheme is like the rectangle color scheme, but the four colors are evenly spaced on the color wheel.



FF776E



87AD3F



00BAD5



A392FD

Rectangle

The Rectangle color scheme consists of four colors that form a rectangle on the color wheel.



FF776E



CC9831



00BAD5



00ACFF

Sweetspot

The Sweet Spot groups the original color and five complimentary colors.



FF776E



FFD6D4



FF6EF8



806866



000000



808080

Same Dimension

The Same Dimension uses a secret algorithm to generate beautiful new colors.



FF776E



FF5C52



FFBE6E



807473



BF0C00



400400

Inverse Universe

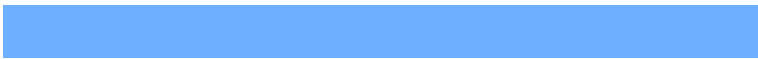
The Inverse Universe completely reimagines the original color for something new.



6EF6FF



52F4FF



6EAFFF



737F80



00B3BF



003C40

Previews

White Background



This preview shows how the Hex color FF776E looks on a white background.

Color Contrast Check

Large Text (above 18pt) WCAG AA × Fail

Any Text WCAG AA × Fail

Large Text (above 18pt) WCAG AAA × Fail

Any Text WCAG AAA × Fail

Black Background



Color Contrast Check

Large Text (above 18pt) WCAG AA ✓ Pass

Any Text WCAG AA ✓ Pass

Large Text (above 18pt) WCAG AAA ✓ Pass

Any Text WCAG AAA ✓ Pass

If you want to check with other color combinations, try the [Color Contrast Checker](#).

Hex FF776E Background



This preview shows how black text looks on a background with the Hex color FF776E.

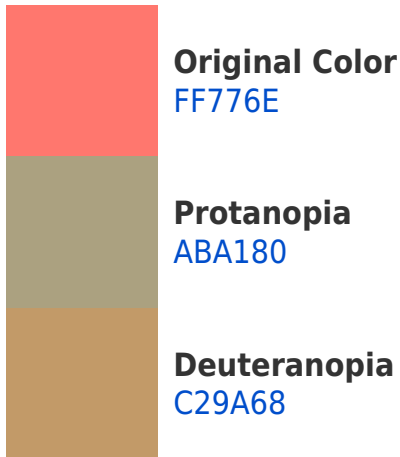


This preview shows how white text looks on a background with the Hex color FF776E.

Color Blindness Simulation

Color vision deficiency is a very complex topic, and I could not describe the different causes any better than Wikipedia does, so if you want to learn more, you should check out their [article about color blindness](#).

Dichromacy



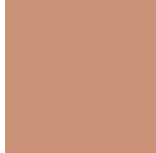


Tritanopia
FF757D

Trichromacy



Original Color
FF776E



Protanomaly
CA9279



Deuteranomaly
D88D6A



Tritanomaly
FF7678

Monochromacy



Original Color
FF776E



Achromatopsia
9F9F9F



Achromatomaly
C2908D

CSS Examples

Text

The CSS property to change the color of the text to Hex FF776E is called "color". The color property can be set on classes, ids or directly on the HTML element.

This example shows how text in the color #FF776E looks like.

```
.text, #text, p{  
    color:#FF776E  
}
```

If you want to add a text shadow in that color use the text-shadow property, you can generate a text shadow directly with our [CSS Text Shadow Generator](#).

Here you see how black text with a 4 pixel #FF776E colored shadow looks like.

```
.shadow{ text-shadow: 4px 4px 2px #FF776E
}
```

Border

The CSS property to change the border of an element to Hex FF776E is called "border". The border property can be set on classes, ids or directly on the HTML element.

This example shows the color as border, it can be applied via the CSS property "border" or "border-color".

```
.border, #border, table{ border:4px solid
#FF776E }
```

If only the border color should be changed use the property `border-color`.

```
.border{ border-color:#FF776E }
```

If you want to add a box shadow in that color use:

Here you see how a box with a 4 pixel #FF776E colored shadow looks like.

```
.boxshadow{ -moz-box-shadow:4px 4px 4px  
4px #FF776E; -webkit-box-shadow:4px 4px  
4px 4px #FF776E; box-shadow:4px 4px 4px  
4px #FF776E }
```

Background

The CSS property to change the background color of an element to Hex FF776E is called "background". The background property can be set on classes, ids or directly on the HTML element.

```
.background, #background, body{  
background:#FF776E }
```

If only the background color should be changed can be used:

```
.background{ background-color:#FF776E }
```

This example shows the color as background, it is applied via the CSS property "background".

To optimize and compress your CSS code, you can use our [online CSS compressor and optimizer](#) based on csstidy. If you want to create a linear or radial gradient as background or border, check our [CSS Gradient Generator](#).

Hey! You found this booklet interesting? Support Converting Colors with the new Membership Option!

The pro membership hides all ads, plus gives you double the colors in the color bucket, and more awesome pro features!

[Learn more, Memberships starting at \\$2.50/m!](#)

**Follow me
on Twitter!**

@ConvertingColor