

Converting Colors

Hex(FF7969)

Have a look what the booklet for
Hex(FF7969) contains.

| | |
|--|----|
| Hex(FF7969) | 3 |
| <i>Conversions</i> | 4 |
| <i>Details</i> | 6 |
| <i>Harmonies</i> | 11 |
| <i>Previews</i> | 23 |
| <i>Color Blindness Simulation</i> | 26 |
| <i>CSS Examples</i> | 29 |

Color

Hex(F77969)

Conversions

Conversions Part 1

| Format | Color |
|-------------|----------------------------|
| Hex | FF7969 |
| RGB | 255, 121, 105 |
| RGB Percent | 100%, 47%, 41% |
| CMY | 0.0000, 0.5255, 0.5882 |
| CMYK | 0.00, 0.53, 0.59, 0.00 |
| HSL | 6°, 100%, 71% |
| HSV | 6°, 59%, 100% |
| XYZ | 50.6272, 35.9547, 17.6362 |
| YIQ | 159.2420, 85.0000, 23.4320 |

Conversions

Conversions Part 2

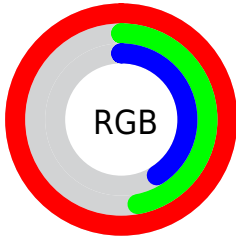
| Format | Color |
|-------------------------------------|--------------------------------|
| R _Y B | 255, 123, 105 |
| Decimal | 16742761 |
| CIE Lab | 66.49, 49.77, 33.19 |
| CIE LCh | 66, 59.823, 33.703 |
| Yxy | 35.9547, 0.4858, 0.3450 |
| Android (android.graphics.Color) | 4294932841 (0xFFFF7969) |
| YUV | 159.2420, -26.7413, 83.9798 |
| Hunter-Lab | 59.9622, 45.7769, 24.5351 |

Details

The Hex color **FF7969** is a light color, and the websafe version is hex **FF6666**. A complement of this color would be **69EFFF**, and the grayscale version is **9F9F9F**.

A 20% lighter version of the original color is **FFB09C**, and **C14339** is the 20% darker color. If you saturate the color by 10%, you get **FF6250**, and if you desaturate by 10%, it is **FF9083**.

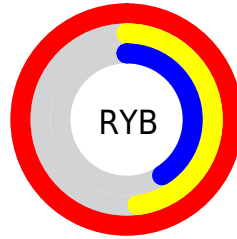
Distribution



Red (100%)

Green (47%)

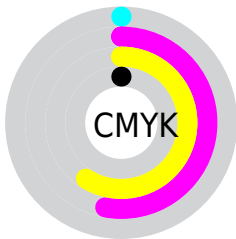
Blue (41%)



Red (100%)

Yellow (48%)

Blue (41%)

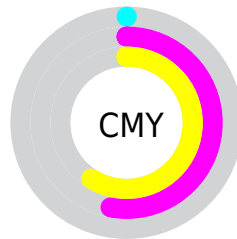


Cyan (0%)

Magenta (53%)

Yellow (59%)

Black (0%)



Cyan (0%)

Magenta (53%)

Yellow (59%)

Brightness & Saturation Gradients

These gradients show how the Hex color FF7969 changes by changing the brightness by 10 percent. The first figure shows a shift by +10% for each color and the second figure -10%.

Similar to the brightness gradients but the following saturation gradients show a change of the Hex color FF7969 by changing the saturation by 10% instead.

 FF7969

 FF7969

FFFFFF

 E05E51

 FFB09C

 C14339

 FFCDB7

 A22723

 FFEAD3

 84000E

 FFFFF0

 670000

 490000

 2E0002

 000000

 FF7969

 FF7969

■ FF6250

■ FF9083

■ FF4B36

■ FFA79C

■ FF351C

■ FFBDB5

■ FF1E03

■ FFD4CF

■ FF1B00

■ FFEBE9

FFFFFF

Harmonies

Analogous

The Analogous color harmony consists of three colors that are next to each other on the color wheel.



FF709D



FF7969



E48D3F

Triad

The Triadic color harmony groups three colors that are evenly spaced from another and form a triangle on the color wheel.



FF7969



27B870



33A6FF

Complementary

The Complementary color scheme is a pair of colors which are on the opposite of each other on the color wheel.



FF7969



69EFFF

Split Complementary

Split-complementary colors differ from the complementary color scheme. The scheme consists of three colors, the original color and two neighbors of the complement color.



00B4FF



FF7969



00BCA7

Square

The Square scheme is like the rectangle color scheme, but the four colors are evenly spaced on the color wheel.



FF7969



81B042



00BBDC



AC91FC

Rectangle

The Rectangle color scheme consists of four colors that form a rectangle on the color wheel.



FF7969



C89B2F



00BBDC



00ABFF

Sweetspot

The Sweet Spot groups the original color and five complimentary colors.



FF7969



FFD6D1



FF69F0



806663



000000



808080

Same Dimension

The Same Dimension uses a secret algorithm to generate beautiful new colors.



FF7969



FF5D4A



FFC369



807473



BF1400



400700

Inverse Universe

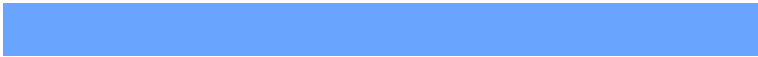
The Inverse Universe completely reimagines the original color for something new.



69EFFF



4AECFF



69A5FF



737E80



00ABBF



003940

Previews

White Background



This preview shows how the Hex color FF7969 looks on a white background.

Color Contrast Check

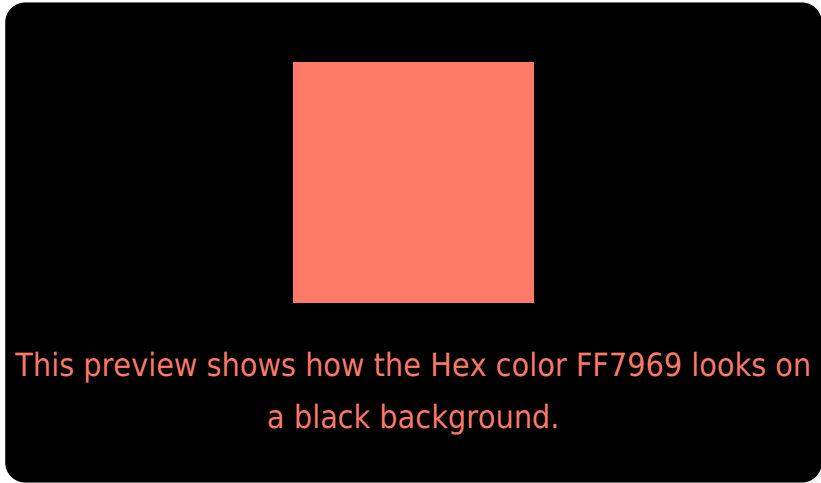
Large Text (above 18pt) WCAG AA × Fail

Any Text WCAG AA × Fail

Large Text (above 18pt) WCAG AAA × Fail

Any Text WCAG AAA × Fail

Black Background



Color Contrast Check

Large Text (above 18pt) WCAG AA ✓ Pass

Any Text WCAG AA ✓ Pass

Large Text (above 18pt) WCAG AAA ✓ Pass

Any Text WCAG AAA ✓ Pass

If you want to check with other color combinations, try the [Color Contrast Checker](#).

Hex FF7969 Background



This preview shows how black text looks on a background with the Hex color FF7969.



This preview shows how white text looks on a background with the Hex color FF7969.

Color Blindness Simulation

Color vision deficiency is a very complex topic, and I could not describe the different causes any better than Wikipedia does, so if you want to learn more, you should check out their [article about color blindness](#).

Dichromacy



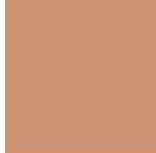


Tritanopia
FF777F

Trichromacy



Original Color
FF7969



Protanomaly
CB9374



Deuteranomaly
D98F65

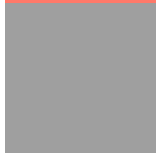


Tritanomaly
FF7877

Monochromacy



Original Color
FF7969



Achromatopsia
9F9F9F



Achromatomaly
C2918B

CSS Examples

Text

The CSS property to change the color of the text to Hex FF7969 is called "color". The color property can be set on classes, ids or directly on the HTML element.

This example shows how text in the color #FF7969 looks like.

```
.text, #text, p{  
    color:#FF7969  
}
```

If you want to add a text shadow in that color use the text-shadow property, you can generate a text shadow directly with our [CSS Text Shadow Generator](#).

Here you see how black text with a 4 pixel #FF7969 colored shadow looks like.

```
.shadow{ text-shadow: 4px 4px 2px #FF7969
}
```

Border

The CSS property to change the border of an element to Hex FF7969 is called "border". The border property can be set on classes, ids or directly on the HTML element.

This example shows the color as border, it can be applied via the CSS property "border" or "border-color".

```
.border, #border, table{ border:4px solid
#FF7969 }
```

If only the border color should be changed use the property `border-color`.

```
.border{ border-color:#FF7969 }
```

If you want to add a box shadow in that color use:

Here you see how a box with a 4 pixel #FF7969 colored shadow looks like.

```
.boxshadow{ -moz-box-shadow:4px 4px 4px  
4px #FF7969; -webkit-box-shadow:4px 4px  
4px 4px #FF7969; box-shadow:4px 4px 4px  
4px #FF7969 }
```

Background

The CSS property to change the background color of an element to Hex FF7969 is called "background". The background property can be set on classes, ids or directly on the HTML element.

```
.background, #background, body{  
background:#FF7969 }
```

If only the background color should be changed can be used:

```
.background{ background-color:#FF7969 }
```

This example shows the color as background, it is applied via the CSS property "background".

To optimize and compress your CSS code, you can use our [online CSS compressor and optimizer](#) based on csstidy. If you want to create a linear or radial gradient as background or border, check our [CSS Gradient Generator](#).

Hey! You found this booklet interesting? Support Converting Colors with the new Membership Option!

The pro membership hides all ads, plus gives you double the colors in the color bucket, and more awesome pro features!

[Learn more, Memberships starting at \\$2.50/m!](#)

**Follow me
on Twitter!**

@ConvertingColor