

# Converting Colors

Hex(FF7B74)

Have a look what the booklet for  
Hex(FF7B74) contains.

|  |    |
|--|----|
| <b>Hex(FF7B74)</b> .....                       | 3  |
| <b><i>Conversions</i></b> .....                | 4  |
| <b><i>Details</i></b> .....                    | 6  |
| <b><i>Harmonies</i></b> .....                  | 11 |
| <b><i>Previews</i></b> .....                   | 23 |
| <b><i>Color Blindness Simulation</i></b> ..... | 26 |
| <b><i>CSS Examples</i></b> .....               | 29 |

# **Color**

**Hex(F77B74)**

# Conversions

## Conversions Part 1

| Format      | Color                      |
|-------------|----------------------------|
| Hex         | FF7B74                     |
| RGB         | 255, 123, 116              |
| RGB Percent | 100%, 48%, 45%             |
| CMY         | 0.0000, 0.5176, 0.5451     |
| CMYK        | 0.00, 0.52, 0.55, 0.00     |
| HSL         | 3°, 100%, 73%              |
| HSV         | 3°, 55%, 100%              |
| XYZ         | 51.4753, 36.6869, 20.8912  |
| YIQ         | 161.6700, 80.9190, 25.8070 |

# Conversions

## Conversions Part 2

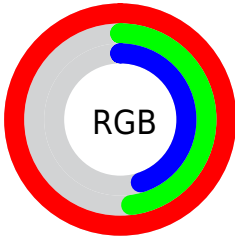
| <b>Format</b>                       | <b>Color</b>                   |
|-------------------------------------|--------------------------------|
| <b>R<sub>YB</sub></b>               | 255, 123, 116                  |
| Decimal                             | 16743284                       |
| CIE <sub>Lab</sub>                  | 67.04, 49.62, 27.82            |
| CIE <sub>LCh</sub>                  | 67, 56.889, 29.278             |
| Yxy                                 | 36.6869, 0.4720,<br>0.3364     |
| Android<br>(android.graphics.Color) | 4294933364<br>(0xFFFF7B74)     |
| YUV                                 | 161.6700, -22.5153,<br>81.8504 |
| Hunter-Lab                          | 60.5697, 45.7018,<br>21.9489   |

# Details

The Hex color **FF7B74** is a light color, and the websafe version is hex **FF6666**. A complement of this color would be **74F8FF**, and the grayscale version is **A2A2A2**.

A 20% lighter version of the original color is **FFB2A8**, and **C14544** is the 20% darker color. If you saturate the color by 10%, you get **FF635A**, and if you desaturate by 10%, it is **FF938E**.

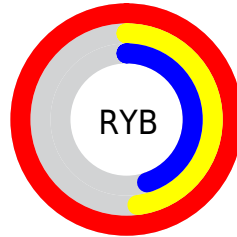
# Distribution



Red (100%)

Green (48%)

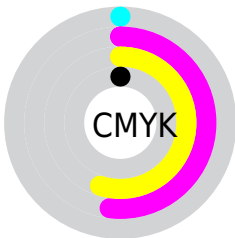
Blue (45%)



Red (100%)

Yellow (48%)

Blue (45%)

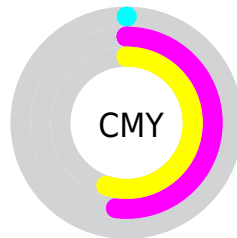


Cyan (0%)

Magenta (52%)

Yellow (55%)

Black (0%)



Cyan (0%)

Magenta (52%)

Yellow (55%)

# Brightness & Saturation Gradients

These gradients show how the Hex color FF7B74 changes by changing the brightness by 10 percent. The first figure shows a shift by +10% for each color and the second figure -10%.

Similar to the brightness gradients but the following saturation gradients show a change of the Hex color FF7B74 by changing the saturation by 10% instead.



 FF7B74

 FF7B74

FFFFFF

 E0605B

 FFB2A8

 C14544

 FFCFC3

 A3292D

 FFECDF

 850219

FFFFFFC

 680000

 4B0000

 300002

 000000

 FF7B74

 FF7B74

■ FF635A

■ FF938E

■ FF4B41

■ FFABA7

■ FF3227

■ FFC4C1

■ FF1A0E

■ FFDCDA

■ FF0D00

■ FFF4F3

FFFFFF

# Harmonies

## Analogous

The Analogous color harmony consists of three colors that are next to each other on the color wheel.



FE75A7



FF7B74



E88D4B

# Triad

The Triadic color harmony groups three colors that are evenly spaced from another and form a triangle on the color wheel.



FF7B74



47B86C



22A9FF

# Complementary

The Complementary color scheme is a pair of colors which are on the opposite of each other on the color wheel.



FF7B74



74F8FF

# Split Complementary

Split-complementary colors differ from the complementary color scheme. The scheme consists of three colors, the original color and two neighbors of the complement color.



00B6FA



FF7B74



00BCA0

# Square

The Square scheme is like the rectangle color scheme, but the four colors are evenly spaced on the color wheel.



FF7B74



8DAF44



00BCD4



A396FD

# Rectangle

The Rectangle color scheme consists of four colors that form a rectangle on the color wheel.



FF7B74



CF9A3A



00BCD4



00AEFF



# Sweetspot

The Sweet Spot groups the original color and five complimentary colors.



FF7B74



FFD8D6



FF74F8



806867



000000



808080



# Same Dimension

The Same Dimension uses a secret algorithm to generate beautiful new colors.



FF7B74



FF6259



FFC074



807373



BF0A00



400300



# Inverse Universe

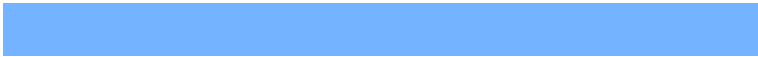
The Inverse Universe completely reimagines the original color for something new.



74F8FF



59F7FF



74B3FF



737F80



00B6BF



003D40



# Previews

## White Background



This preview shows how the Hex color FF7B74 looks on a white background.

## Color Contrast Check

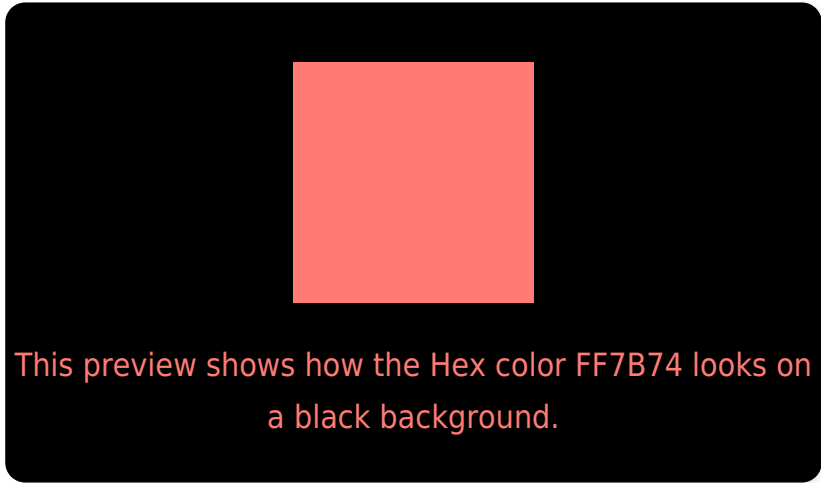
Large Text (above 18pt) WCAG AA × Fail

Any Text WCAG AA × Fail

Large Text (above 18pt) WCAG AAA × Fail

Any Text WCAG AAA × Fail

# Black Background



## Color Contrast Check

Large Text (above 18pt) WCAG AA ✓ Pass

Any Text WCAG AA ✓ Pass

Large Text (above 18pt) WCAG AAA ✓ Pass

Any Text WCAG AAA ✓ Pass

If you want to check with other color combinations, try the [Color Contrast Checker](#).



## Hex FF7B74 Background



This preview shows how black text looks on a background with the Hex color FF7B74.

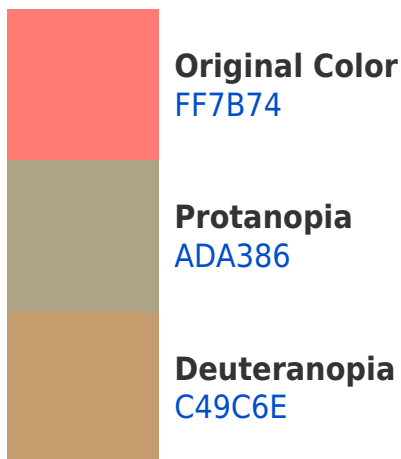


This preview shows how white text looks on a background with the Hex color FF7B74.

# Color Blindness Simulation

Color vision deficiency is a very complex topic, and I could not describe the different causes any better than Wikipedia does, so if you want to learn more, you should check out their [article about color blindness](#).

## Dichromacy



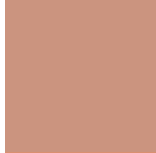


**Tritanopia**  
FF7A82

# Trichromacy



**Original Color**  
FF7B74



**Protanomaly**  
CB947F



**Deuteranomaly**  
D99070



**Tritanomaly**  
FF7A7D

# Monochromacy



**Original Color**  
FF7B74



**Achromatopsia**  
A2A2A2



**Achromatomaly**  
C49491

# CSS Examples

## Text

The CSS property to change the color of the text to Hex FF7B74 is called "color". The color property can be set on classes, ids or directly on the HTML element.

This example shows how text in the color #FF7B74 looks like.

```
.text, #text, p{  
    color:#FF7B74  
}
```

If you want to add a text shadow in that color use the text-shadow property, you can generate a text shadow directly with our [CSS Text Shadow Generator](#).

Here you see how black text with a 4 pixel #FF7B74 colored shadow looks like.

```
.shadow{ text-shadow: 4px 4px 2px #FF7B74
}
```

## Border

The CSS property to change the border of an element to Hex FF7B74 is called "border". The border property can be set on classes, ids or directly on the HTML element.

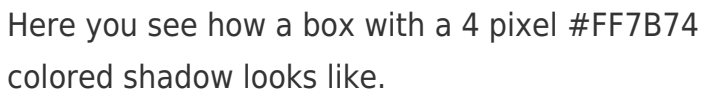
This example shows the color as border, it can be applied via the CSS property "border" or "border-color".

```
.border, #border, table{ border:4px solid
#FF7B74 }
```

If only the border color should be changed use the property `border-color`.

```
.border{ border-color:#FF7B74 }
```

If you want to add a box shadow in that color use:



Here you see how a box with a 4 pixel `#FF7B74` colored shadow looks like.

```
.boxshadow{ -moz-box-shadow:4px 4px 4px  
4px #FF7B74; -webkit-box-shadow:4px 4px  
4px 4px #FF7B74; box-shadow:4px 4px 4px  
4px #FF7B74 }
```

# Background

The CSS property to change the background color of an element to Hex FF7B74 is called "background". The background property can be set on classes, ids or directly on the HTML element.

```
.background, #background, body{  
background:#FF7B74 }
```

If only the background color should be changed can be used:

```
.background{ background-color:#FF7B74 }
```

This example shows the color as background, it is applied via the CSS property "background".

To optimize and compress your CSS code, you can use our [online CSS compressor and optimizer](#) based on csstidy. If you want to create a linear or radial gradient as background or border, check our [CSS Gradient Generator](#).



Hey! You found this booklet interesting? Support Converting Colors with the new Membership Option!

The pro membership hides all ads, plus gives you double the colors in the color bucket, and more awesome pro features!

**[Learn more, Memberships starting at \\$2.50/m!](#)**

**Follow me  
on Twitter!**

@ConvertingColor