

Converting Colors

Hex(FF7F2D)

Have a look what the booklet for
Hex(FF7F2D) contains.

Hex(FF7F2D)	3
<i>Conversions</i>	4
<i>Details</i>	6
<i>Harmonies</i>	11
<i>Previews</i>	23
<i>Color Blindness Simulation</i>	26
<i>CSS Examples</i>	29

Color

Hex(F7F2D)

Conversions

Conversions Part 1

Format	Color
Hex	FF7F2D
RGB	255, 127, 45
RGB Percent	100%, 50%, 18%
CMY	0.0000, 0.5020, 0.8235
CMYK	0.00, 0.50, 0.82, 0.00
HSL	23°, 100%, 59%
HSV	23°, 82%, 100%
XYZ	49.3030, 36.6282, 6.9540
YIQ	155.9240, 102.6100, 1.6340

Conversions

Conversions Part 2

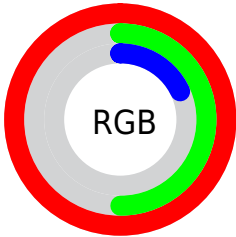
Format	Color
R_{YB}	255, 180, 45
Decimal	16744237
CIE _{Lab}	67.00, 44.00, 63.15
CIE _{LCh}	67, 76.968, 55.137
Yxy	36.6282, 0.5308, 0.3943
Android (android.graphics.Color)	4294934317 (0xFFFF7F2D)
YUV	155.9240, -54.6855, 86.8897
Hunter-Lab	60.5212, 39.5011, 35.5523

Details

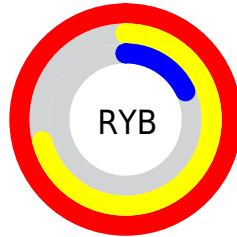
The Hex color **FF7F2D** is a dark color, and the websafe version is hex **FF6633**. The color can be described as middle washed orange. A complement of this color would be **2DADFF**, and the grayscale version is **9C9C9C**.

A 20% lighter version of the original color is **FFB662**, and **BF4B00** is the 20% darker color. If you saturate the color by 10%, you get **FF6F14**, and if you desaturate by 10%, it is **FF8F47**.

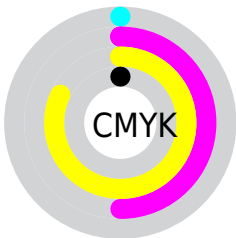
Distribution



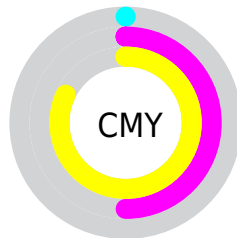
- Red (100%)
- Green (50%)
- Blue (18%)



- Red (100%)
- Yellow (71%)
- Blue (18%)



- Cyan (0%)
- Magenta (50%)
- Yellow (82%)
- Black (0%)



- Cyan (0%)
- Magenta (50%)
- Yellow (82%)

Brightness & Saturation Gradients

These gradients show how the Hex color FF7F2D changes by changing the brightness by 10 percent. The first figure shows a shift by +10% for each color and the second figure -10%.

Similar to the brightness gradients but the following saturation gradients show a change of the Hex color FF7F2D by changing the saturation by 10% instead.

 FF7F2D

 FF7F2D

FFFFFF

 DF650D

 FFB662

 BF4B00

 FFD27C

 A03000

 FFEF98

 811300

 FFFFB3

 630000

 FFFFCE

 450000

 FFFFEC

 2B0001

 000000

 FF7F2D

 FF7F2D

 FF6F14

 FF8F47

 FF6400

 FF9E60

 FFAE7A

 FFBD93

 FFCDAD

 FFDCC6

 FFECE0

 FFFBF9

FFFFFF

Harmonies

Analogous

The Analogous color harmony consists of three colors that are next to each other on the color wheel.



FF616D



FF7F2D



CD9C00

Triad

The Triadic color harmony groups three colors that are evenly spaced from another and form a triangle on the color wheel.



FF7F2D



00C295



8996FF

Complementary

The Complementary color scheme is a pair of colors which are on the opposite of each other on the color wheel.



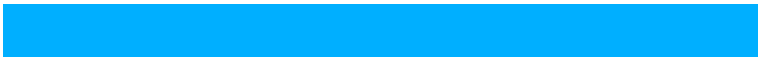
FF7F2D



2DADFF

Split Complementary

Split-complementary colors differ from the complementary color scheme. The scheme consists of three colors, the original color and two neighbors of the complement color.



00AFFF



FF7F2D



00C2DC

Square

The Square scheme is like the rectangle color scheme, but the four colors are evenly spaced on the color wheel.



FF7F2D



03BC4E



00BDFE



EB74F3

Rectangle

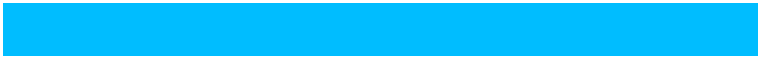
The Rectangle color scheme consists of four colors that form a rectangle on the color wheel.



FF7F2D



A2AB00



00BDFF



4A9FFF

Sweetspot

The Sweet Spot groups the original color and five complimentary colors.



FF7F2D



FFD8BF



FF2DAE



806859



000000



808080

Same Dimension

The Same Dimension uses a secret algorithm to generate beautiful new colors.



FF7F2D



FF6503



FFE72D



807873



BF4B00



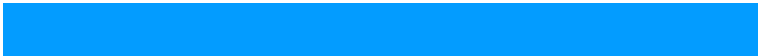
401900

Inverse Universe

The Inverse Universe completely reimagines the original color for something new.



2DADFF



039CFF



2D45FF



737B80



0075BF



002740

Previews

White Background



This preview shows how the Hex color FF7F2D looks on a white background.

Color Contrast Check

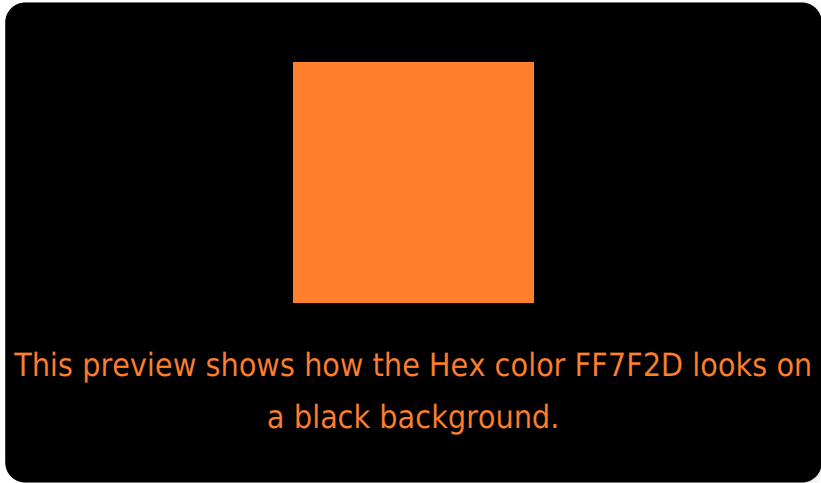
Large Text (above 18pt) WCAG AA × Fail

Any Text WCAG AA × Fail

Large Text (above 18pt) WCAG AAA × Fail

Any Text WCAG AAA × Fail

Black Background



Color Contrast Check

Large Text (above 18pt) WCAG AA ✓ Pass

Any Text WCAG AA ✓ Pass

Large Text (above 18pt) WCAG AAA ✓ Pass

Any Text WCAG AAA ✓ Pass

If you want to check with other color combinations, try the [Color Contrast Checker](#).

Hex FF7F2D Background



This preview shows how black text looks on a background with the Hex color FF7F2D.



This preview shows how white text looks on a background with the Hex color FF7F2D.

Color Blindness Simulation

Color vision deficiency is a very complex topic, and I could not describe the different causes any better than Wikipedia does, so if you want to learn more, you should check out their [article about color blindness](#).

Dichromacy



Original Color
FF7F2D

Protanopia
B7A437

Deuteranopia
CE9B21



Tritanopia
FF7981

Trichromacy



Original Color
FF7F2D



Protanomaly
D19733



Deuteranomaly
E09125



Tritanomaly
FF7B62

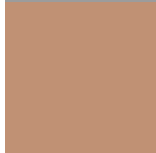
Monochromacy



Original Color
FF7F2D



Achromatopsia
9C9C9C



Achromatomaly
C09174

CSS Examples

Text

The CSS property to change the color of the text to Hex FF7F2D is called "color". The color property can be set on classes, ids or directly on the HTML element.

This example shows how text in the color #FF7F2D looks like.

```
.text, #text, p{  
    color:#FF7F2D  
}
```

If you want to add a text shadow in that color use the text-shadow property, you can generate a text shadow directly with our [CSS Text Shadow Generator](#).

Here you see how black text with a 4 pixel #FF7F2D colored shadow looks like.

```
.shadow{ text-shadow: 4px 4px 2px #FF7F2D
}
```

Border

The CSS property to change the border of an element to Hex FF7F2D is called "border". The border property can be set on classes, ids or directly on the HTML element.

This example shows the color as border, it can be applied via the CSS property "border" or "border-color".

```
.border, #border, table{ border:4px solid
#FF7F2D }
```

If only the border color should be changed use the property `border-color`.

```
.border{ border-color:#FF7F2D }
```

If you want to add a box shadow in that color use:

Here you see how a box with a 4 pixel #FF7F2D colored shadow looks like.

```
.boxshadow{ -moz-box-shadow:4px 4px 4px  
4px #FF7F2D; -webkit-box-shadow:4px 4px  
4px 4px #FF7F2D; box-shadow:4px 4px 4px  
4px #FF7F2D }
```

Background

The CSS property to change the background color of an element to Hex FF7F2D is called "background". The background property can be set on classes, ids or directly on the HTML element.

```
.background, #background, body{  
background:#FF7F2D }
```

If only the background color should be changed can be used:

```
.background{ background-color:#FF7F2D }
```

This example shows the color as background, it is applied via the CSS property "background".

To optimize and compress your CSS code, you can use our [online CSS compressor and optimizer](#) based on csstidy. If you want to create a linear or radial gradient as background or border, check our [CSS Gradient Generator](#).

Hey! You found this booklet interesting? Support Converting Colors with the new Membership Option!

The pro membership hides all ads, plus gives you double the colors in the color bucket, and more awesome pro features!

[Learn more, Memberships starting at \\$2.50/m!](#)

**Follow me
on Twitter!**

@ConvertingColor