

Converting Colors

Hex(FF8279)

Have a look what the booklet for
Hex(FF8279) contains.

Hex(FF8279)	3
<i>Conversions</i>	4
<i>Details</i>	6
<i>Harmonies</i>	11
<i>Previews</i>	23
<i>Color Blindness Simulation</i>	26
<i>CSS Examples</i>	29

Color

Hex(F8279)

Conversions

Conversions Part 1

Format	Color
Hex	FF8279
RGB	255, 130, 121
RGB Percent	100%, 51%, 47%
CMY	0.0000, 0.4902, 0.5255
CMYK	0.00, 0.49, 0.53, 0.00
HSL	4°, 100%, 74%
HSV	4°, 53%, 100%
XYZ	52.6738, 38.6057, 22.7646
YIQ	166.3490, 77.3890, 23.7010

Conversions

Conversions Part 2

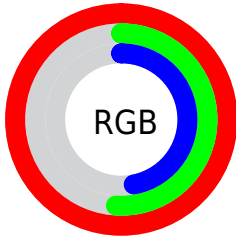
Format	Color
RYB	255, 131, 121
Decimal	16745081
CIELab	68.46, 46.63, 26.93
CIElCh	68, 53.842, 30.006
Yxy	38.6057, 0.4619, 0.3385
Android (android.graphics.Color)	4294935161 (0xFFFF8279)
YUV	166.3490, -22.3571, 77.7469
Hunter-Lab	62.1335, 42.5901, 21.7707

Details

The Hex color **FF8279** is a light color, and the websafe version is hex **FF6666**. A complement of this color would be **79F6FF**, and the grayscale version is **A7A7A7**.

A 20% lighter version of the original color is **FFB9AD**, and **C24D48** is the 20% darker color. If you saturate the color by 10%, you get **FF6A60**, and if you desaturate by 10%, it is **FF9A93**.

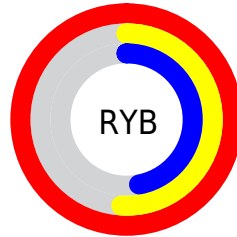
Distribution



Red (100%)

Green (51%)

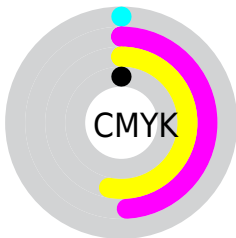
Blue (47%)



Red (100%)

Yellow (51%)

Blue (47%)

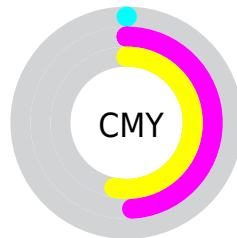


Cyan (0%)

Magenta (49%)

Yellow (53%)

Black (0%)



Cyan (0%)

Magenta (49%)

Yellow (53%)

Brightness & Saturation Gradients

These gradients show how the Hex color FF8279 changes by changing the brightness by 10 percent. The first figure shows a shift by +10% for each color and the second figure -10%.

Similar to the brightness gradients but the following saturation gradients show a change of the Hex color FF8279 by changing the saturation by 10% instead.

 FF8279

 FF8279

FFFFFF

 E06760

 FFB9AD

 C24D48

 FFD6C9

 A43232

 FFF3E5

 86131C

 690005

 4C0000

 320002

 000000

 FF8279

 FF8279

■ FF6A60

■ FF9A93

■ FF5246

■ FFB2AC

■ FF3B2C

■ FFC9C5

■ FF2313

■ FFE1DF

■ FF1100

■ FFF9F9

FFFFFF

Harmonies

Analogous

The Analogous color harmony consists of three colors that are next to each other on the color wheel.



FE7DA9



FF8279



E99253

Triad

The Triadic color harmony groups three colors that are evenly spaced from another and form a triangle on the color wheel.



FF8279



50BB74



44ACFF

Complementary

The Complementary color scheme is a pair of colors which are on the opposite of each other on the color wheel.



FF8279



79F6FF

Split Complementary

Split-complementary colors differ from the complementary color scheme. The scheme consists of three colors, the original color and two neighbors of the complement color.



00B8FA



FF8279



00BFA5

Square

The Square scheme is like the rectangle color scheme, but the four colors are evenly spaced on the color wheel.



FF8279



91B24E



00BED6



A99AFB

Rectangle

The Rectangle color scheme consists of four colors that form a rectangle on the color wheel.



FF8279



D19F44



00BED6



00B1FF

Sweetspot

The Sweet Spot groups the original color and five complimentary colors.



FF8279



FFD9D6



FF79F6



806967



000000



808080

Same Dimension

The Same Dimension uses a secret algorithm to generate beautiful new colors.



FF8279



FF695E



FFC579



807473



BF0D00



400400

Inverse Universe

The Inverse Universe completely reimagines the original color for something new.



79F6FF



5EF4FF



79B3FF



737F80



00B2BF



003B40

Previews

White Background



This preview shows how the Hex color FF8279 looks on a white background.

Color Contrast Check

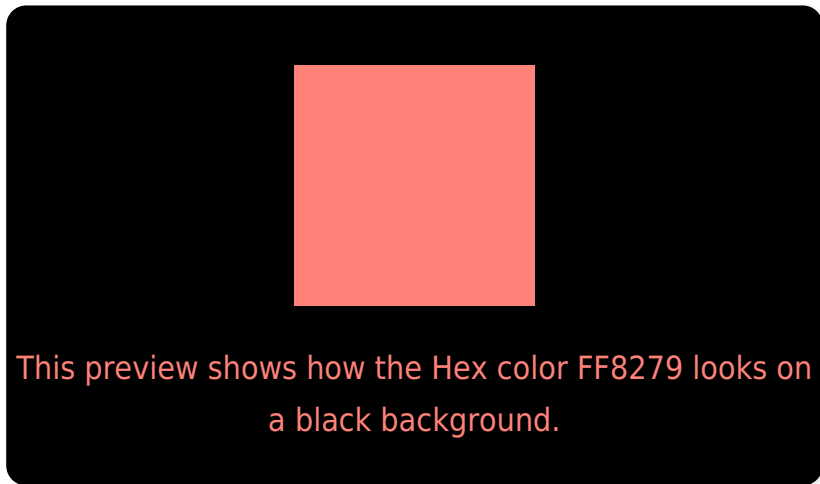
Large Text (above 18pt) WCAG AA × Fail

Any Text WCAG AA × Fail

Large Text (above 18pt) WCAG AAA × Fail

Any Text WCAG AAA × Fail

Black Background



Color Contrast Check

Large Text (above 18pt) WCAG AA ✓ Pass

Any Text WCAG AA ✓ Pass

Large Text (above 18pt) WCAG AAA ✓ Pass

Any Text WCAG AAA ✓ Pass

If you want to check with other color combinations, try the [Color Contrast Checker](#).

Hex FF8279 Background



This preview shows how black text looks on a background with the Hex color FF8279.

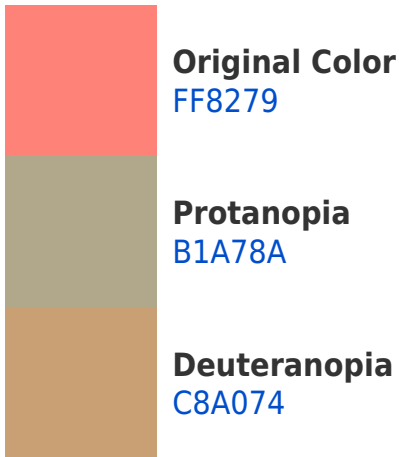


This preview shows how white text looks on a background with the Hex color FF8279.

Color Blindness Simulation

Color vision deficiency is a very complex topic, and I could not describe the different causes any better than Wikipedia does, so if you want to learn more, you should check out their [article about color blindness](#).

Dichromacy



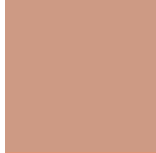


Tritanopia
FF8089

Trichromacy



Original Color
FF8279



Protanomaly
CD9A84



Deuteranomaly
DC9576

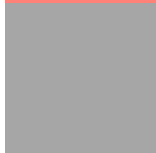


Tritanomaly
FF8183

Monochromacy



Original Color
FF8279



Achromatopsia
A6A6A6



Achromatomaly
C69996

CSS Examples

Text

The CSS property to change the color of the text to Hex FF8279 is called "color". The color property can be set on classes, ids or directly on the HTML element.

This example shows how text in the color #FF8279 looks like.

```
.text, #text, p{  
    color:#FF8279  
}
```

If you want to add a text shadow in that color use the text-shadow property, you can generate a text shadow directly with our [CSS Text Shadow Generator](#).

Here you see how black text with a 4 pixel #FF8279 colored shadow looks like.

```
.shadow{ text-shadow: 4px 4px 2px #FF8279
}
```

Border

The CSS property to change the border of an element to Hex FF8279 is called "border". The border property can be set on classes, ids or directly on the HTML element.

This example shows the color as border, it can be applied via the CSS property "border" or "border-color".

```
.border, #border, table{ border:4px solid
#FF8279 }
```

If only the border color should be changed use the property `border-color`.

```
.border{ border-color:#FF8279 }
```

If you want to add a box shadow in that color use:

Here you see how a box with a 4 pixel #FF8279 colored shadow looks like.

```
.boxshadow{ -moz-box-shadow:4px 4px 4px  
4px #FF8279; -webkit-box-shadow:4px 4px  
4px 4px #FF8279; box-shadow:4px 4px 4px  
4px #FF8279 }
```

Background

The CSS property to change the background color of an element to Hex FF8279 is called "background". The background property can be set on classes, ids or directly on the HTML element.

```
.background, #background, body{  
background:#FF8279 }
```

If only the background color should be changed can be used:

```
.background{ background-color:#FF8279 }
```

This example shows the color as background, it is applied via the CSS property "background".

To optimize and compress your CSS code, you can use our [online CSS compressor and optimizer](#) based on csstidy. If you want to create a linear or radial gradient as background or border, check our [CSS Gradient Generator](#).

Hey! You found this booklet interesting? Support Converting Colors with the new Membership Option!

The pro membership hides all ads, plus gives you double the colors in the color bucket, and more awesome pro features!

[Learn more, Memberships starting at \\$2.50/m!](#)

**Follow me
on Twitter!**

@ConvertingColor