

Converting Colors

Hex(FF844C)

Have a look what the booklet for
Hex(FF844C) contains.

Hex(FF844C)	3
<i>Conversions</i>	4
<i>Details</i>	6
<i>Harmonies</i>	11
<i>Previews</i>	23
<i>Color Blindness Simulation</i>	26
<i>CSS Examples</i>	29

Color

Hex(F844C)

Conversions

Conversions Part 1

Format	Color
Hex	FF844C
RGB	255, 132, 76
RGB Percent	100%, 52%, 30%
CMY	0.0000, 0.4824, 0.7020
CMYK	0.00, 0.48, 0.70, 0.00
HSL	19°, 100%, 65%
HSV	19°, 70%, 100%
XYZ	50.7958, 38.2843, 11.5499
YIQ	162.3930, 91.2840, 8.6600

Conversions

Conversions Part 2

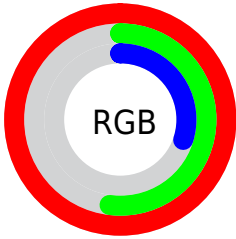
Format	Color
RYB	255, 157, 76
Decimal	16745548
CIELab	68.23, 42.70, 50.55
CIELCh	68, 66.169, 49.812
Yxy	38.2843, 0.5048, 0.3804
Android (android.graphics.Color)	4294935628 (0xFFFF844C)
YUV	162.3930, -42.5917, 81.2163
Hunter-Lab	61.8743, 38.2596, 32.2446

Details

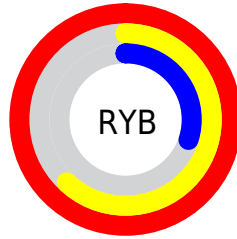
The Hex color **FF844C** is a light color, and the websafe version is hex **FF9966**. The color can be described as light washed orange. A complement of this color would be **4CC7FF**, and the grayscale version is **A3A3A3**.

A 20% lighter version of the original color is **FFBB7F**, and **C0501A** is the 20% darker color. If you saturate the color by 10%, you get **FF7233**, and if you desaturate by 10%, it is **FF9666**.

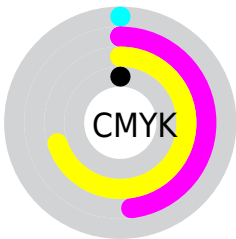
Distribution



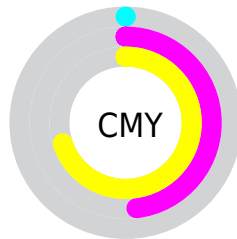
- Red (100%)
- Green (52%)
- Blue (30%)



- Red (100%)
- Yellow (62%)
- Blue (30%)



- Cyan (0%)
- Magenta (48%)
- Yellow (70%)
- Black (0%)



- Cyan (0%)
- Magenta (48%)
- Yellow (70%)

Brightness & Saturation Gradients

These gradients show how the Hex color FF844C changes by changing the brightness by 10 percent. The first figure shows a shift by +10% for each color and the second figure -10%.

Similar to the brightness gradients but the following saturation gradients show a change of the Hex color FF844C by changing the saturation by 10% instead.

 FF844C

 FF844C

FFFFFF

 DF6A33

 FFBB7F

 C0501A

 FFD79A

 A13600

 FFF4B5

 831A00

 FFFFD1

 650000

 FFFFED

 480000

 2E0002

 000000

 FF844C

 FF844C

■ FF7233

■ FF9666

■ FF6119

■ FFA77F

■ FF5000

■ FFB999

■ FFCAB2

■ FFDCCC

■ FFEDE5

FFFFFF

Harmonies

Analogous

The Analogous color harmony consists of three colors that are next to each other on the color wheel.



FF7081



FF844C



D69C25

Triad

The Triadic color harmony groups three colors that are evenly spaced from another and form a triangle on the color wheel.



FF844C



00C28F



809FFF

Complementary

The Complementary color scheme is a pair of colors which are on the opposite of each other on the color wheel.



FF844C



4CC7FF

Split Complementary

Split-complementary colors differ from the complementary color scheme. The scheme consists of three colors, the original color and two neighbors of the complement color.



00B3FF



FF844C



00C3CD

Square

The Square scheme is like the rectangle color scheme, but the four colors are evenly spaced on the color wheel.



FF844C



55BB55



00BFFF



DA85F4

Rectangle

The Rectangle color scheme consists of four colors that form a rectangle on the color wheel.



FF844C



B3AA1F



00BFFF



4CA7FF

Sweetspot

The Sweet Spot groups the original color and five complimentary colors.



FF844C



FFDAC9



FF4CC9



806A60



000000



808080

Same Dimension

The Same Dimension uses a secret algorithm to generate beautiful new colors.



FF844C



FF6C29



FFDB4C



807773



BF3C00



401400

Inverse Universe

The Inverse Universe completely reimagines the original color for something new.



4CC7FF



29BCFF



4C70FF



737C80



0083BF



002C40

Previews

White Background



This preview shows how the Hex color FF844C looks on a white background.

Color Contrast Check

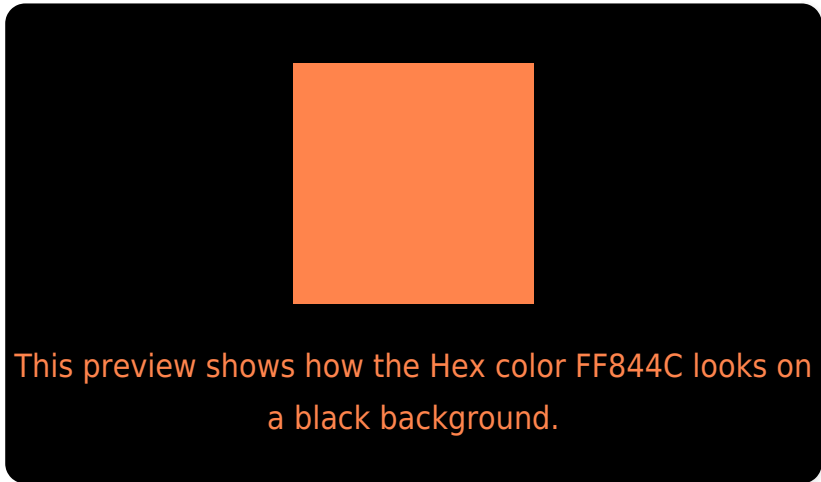
Large Text (above 18pt) WCAG AA × Fail

Any Text WCAG AA × Fail

Large Text (above 18pt) WCAG AAA × Fail

Any Text WCAG AAA × Fail

Black Background



Color Contrast Check

Large Text (above 18pt) WCAG AA ✓ Pass

Any Text WCAG AA ✓ Pass

Large Text (above 18pt) WCAG AAA ✓ Pass

Any Text WCAG AAA ✓ Pass

If you want to check with other color combinations, try the [Color Contrast Checker](#).

Hex FF844C Background



This preview shows how black text looks on a background with the Hex color FF844C.

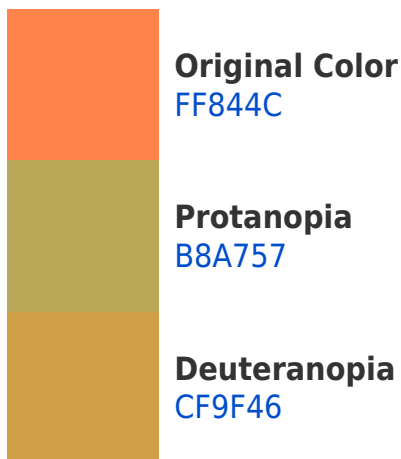


This preview shows how white text looks on a background with the Hex color FF844C.

Color Blindness Simulation

Color vision deficiency is a very complex topic, and I could not describe the different causes any better than Wikipedia does, so if you want to learn more, you should check out their [article about color blindness](#).

Dichromacy





Tritanopia
FF7F88

Trichromacy



Original Color
FF844C



Protanomaly
D29A53



Deuteranomaly
E09548



Tritanomaly
FF8172

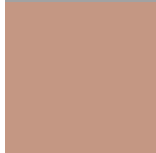
Monochromacy



Original Color
FF844C



Achromatopsia
A2A2A2



Achromatomaly
C49783

CSS Examples

Text

The CSS property to change the color of the text to Hex FF844C is called "color". The color property can be set on classes, ids or directly on the HTML element.

This example shows how text in the color #FF844C looks like.

```
.text, #text, p{  
    color:#FF844C  
}
```

If you want to add a text shadow in that color use the text-shadow property, you can generate a text shadow directly with our [CSS Text Shadow Generator](#).

Here you see how black text with a 4 pixel #FF844C colored shadow looks like.

```
.shadow{ text-shadow: 4px 4px 2px #FF844C
}
```

Border

The CSS property to change the border of an element to Hex FF844C is called "border". The border property can be set on classes, ids or directly on the HTML element.

This example shows the color as border, it can be applied via the CSS property "border" or "border-color".

```
.border, #border, table{ border:4px solid
#FF844C }
```

If only the border color should be changed use the property `border-color`.

```
.border{ border-color:#FF844C }
```

If you want to add a box shadow in that color use:

Here you see how a box with a 4 pixel #FF844C colored shadow looks like.

```
.boxshadow{ -moz-box-shadow:4px 4px 4px  
4px #FF844C; -webkit-box-shadow:4px 4px  
4px 4px #FF844C; box-shadow:4px 4px 4px  
4px #FF844C }
```

Background

The CSS property to change the background color of an element to Hex FF844C is called "background". The background property can be set on classes, ids or directly on the HTML element.

```
.background, #background, body{  
background:#FF844C }
```

If only the background color should be changed can be used:

```
.background{ background-color:#FF844C }
```

This example shows the color as background, it is applied via the CSS property "background".

To optimize and compress your CSS code, you can use our [online CSS compressor and optimizer](#) based on csstidy. If you want to create a linear or radial gradient as background or border, check our [CSS Gradient Generator](#).

Hey! You found this booklet interesting? Support Converting Colors with the new Membership Option!

The pro membership hides all ads, plus gives you double the colors in the color bucket, and more awesome pro features!

[Learn more, Memberships starting at \\$2.50/m!](#)

**Follow me
on Twitter!**

@ConvertingColor