

Converting Colors

Hex(FF8470)

Have a look what the booklet for
Hex(FF8470) contains.

Hex(FF8470)	3
<i>Conversions</i>	4
<i>Details</i>	6
<i>Harmonies</i>	11
<i>Previews</i>	23
<i>Color Blindness Simulation</i>	26
<i>CSS Examples</i>	29

Color

Hex(F8470)

Conversions

Conversions Part 1

Format	Color
Hex	FF8470
RGB	255, 132, 112
RGB Percent	100%, 52%, 44%
CMY	0.0000, 0.4824, 0.5608
CMYK	0.00, 0.48, 0.56, 0.00
HSL	8°, 100%, 72%
HSV	8°, 56%, 100%
XYZ	52.4159, 38.9324, 20.0813
YIQ	166.4970, 79.7280, 19.8560

Conversions

Conversions Part 2

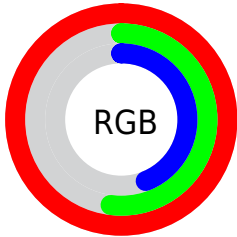
Format	Color
R _Y B	255, 135, 112
Decimal	16745584
CIE Lab	68.70, 44.93, 32.20
CIE LCh	69, 55.274, 35.624
Yxy	38.9324, 0.4704, 0.3494
Android (android.graphics.Color)	4294935664 (0xFFFF8470)
YUV	166.4970, -26.8670, 77.6171
Hunter-Lab	62.3958, 40.7571, 24.5953

Details

The Hex color **FF8470** is a light color, and the websafe version is hex **FF6666**. A complement of this color would be **70EBFF**, and the grayscale version is **A7A7A7**.

A 20% lighter version of the original color is **FFBBA4**, and **C14F40** is the 20% darker color. If you saturate the color by 10%, you get **FF6E57**, and if you desaturate by 10%, it is **FF9A8A**.

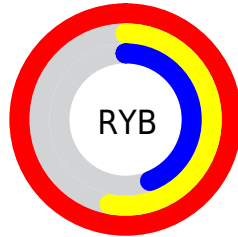
Distribution



Red (100%)

Green (52%)

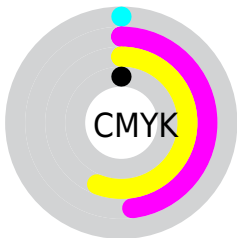
Blue (44%)



Red (100%)

Yellow (53%)

Blue (44%)

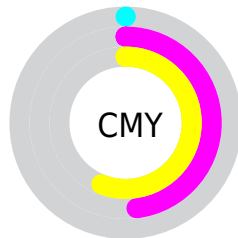


Cyan (0%)

Magenta (48%)

Yellow (56%)

Black (0%)



Cyan (0%)

Magenta (48%)

Yellow (56%)

Brightness & Saturation Gradients

These gradients show how the Hex color FF8470 changes by changing the brightness by 10 percent. The first figure shows a shift by +10% for each color and the second figure -10%.

Similar to the brightness gradients but the following saturation gradients show a change of the Hex color FF8470 by changing the saturation by 10% instead.

 FF8470

 FF8470

FFFFFF

 E06957

 FFBBA4

 C14F40

 FFD8BF

 A33529

 FFF5DB

 851814

 FFFFF8

 690000

 4B0000

 310002

 000000

 FF8470

 FF8470

 FF6E57

 FF9A8A

 FF583D

 FFB0A3

 FF4223

 FFC6BD

 FF2C0A

 FFDCD6

 FF2400

 FFF2F0

FFFFFF

Harmonies

Analogous

The Analogous color harmony consists of three colors that are next to each other on the color wheel.



FF7BA0



FF8470



E5964C

Triad

The Triadic color harmony groups three colors that are evenly spaced from another and form a triangle on the color wheel.



FF8470



3ABD7C



5AAAFF

Complementary

The Complementary color scheme is a pair of colors which are on the opposite of each other on the color wheel.



FF8470



70EBFF

Split Complementary

Split-complementary colors differ from the complementary color scheme. The scheme consists of three colors, the original color and two neighbors of the complement color.



00B8FF



FF8470



00C1B0

Square

The Square scheme is like the rectangle color scheme, but the four colors are evenly spaced on the color wheel.



FF8470



87B552



00BFE0



B797F9

Rectangle

The Rectangle color scheme consists of four colors that form a rectangle on the color wheel.



FF8470



CAA23F



00BFEO



15AFFF

Sweetspot

The Sweet Spot groups the original color and five complimentary colors.



FF8470



FFDAD4



FF70EC



806A66



000000



808080

Same Dimension

The Same Dimension uses a secret algorithm to generate beautiful new colors.



FF8470



FF6C54



FFCB70



807573



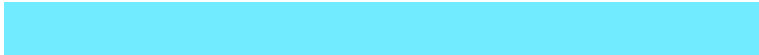
BF1B00



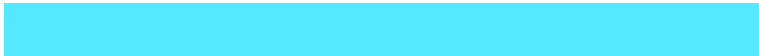
400900

Inverse Universe

The Inverse Universe completely reimagines the original color for something new.



70EBFF



54E7FF



70A4FF



737E80



00A5BF



003740

Previews

White Background



This preview shows how the Hex color FF8470 looks on a white background.

Color Contrast Check

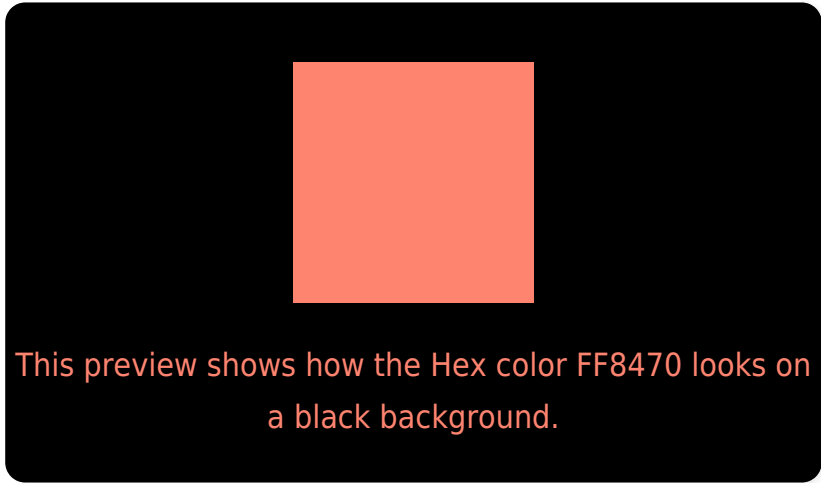
Large Text (above 18pt) WCAG AA × Fail

Any Text WCAG AA × Fail

Large Text (above 18pt) WCAG AAA × Fail

Any Text WCAG AAA × Fail

Black Background



Color Contrast Check

Large Text (above 18pt) WCAG AA ✓ Pass

Any Text WCAG AA ✓ Pass

Large Text (above 18pt) WCAG AAA ✓ Pass

Any Text WCAG AAA ✓ Pass

If you want to check with other color combinations, try the [Color Contrast Checker](#).

Hex FF8470 Background



This preview shows how black text looks on a background with the Hex color FF8470.

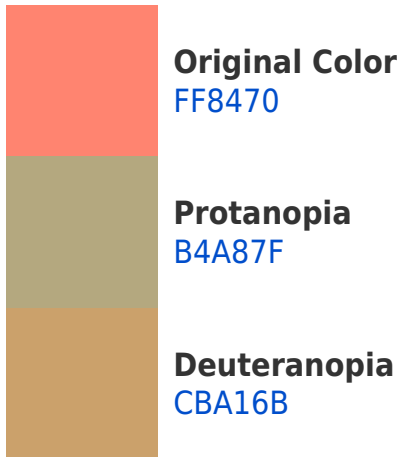


This preview shows how white text looks on a background with the Hex color FF8470.

Color Blindness Simulation

Color vision deficiency is a very complex topic, and I could not describe the different causes any better than Wikipedia does, so if you want to learn more, you should check out their [article about color blindness](#).

Dichromacy



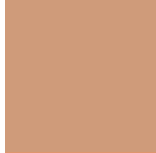


Tritanopia
FF818A

Trichromacy



Original Color
FF8470



Protanomaly
CF9B7A



Deuteranomaly
DE966D

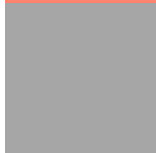


Tritanomaly
FF8281

Monochromacy



Original Color
FF8470



Achromatopsia
A6A6A6



Achromatomaly
C69A92

CSS Examples

Text

The CSS property to change the color of the text to Hex FF8470 is called "color". The color property can be set on classes, ids or directly on the HTML element.

This example shows how text in the color #FF8470 looks like.

```
.text, #text, p{  
    color:#FF8470  
}
```

If you want to add a text shadow in that color use the text-shadow property, you can generate a text shadow directly with our [CSS Text Shadow Generator](#).

Here you see how black text with a 4 pixel #FF8470 colored shadow looks like.

```
.shadow{ text-shadow: 4px 4px 2px #FF8470
}
```

Border

The CSS property to change the border of an element to Hex FF8470 is called "border". The border property can be set on classes, ids or directly on the HTML element.

This example shows the color as border, it can be applied via the CSS property "border" or "border-color".

```
.border, #border, table{ border:4px solid
#FF8470 }
```

If only the border color should be changed use the property `border-color`.

```
.border{ border-color:#FF8470 }
```

If you want to add a box shadow in that color use:

Here you see how a box with a 4 pixel #FF8470 colored shadow looks like.

```
.boxshadow{ -moz-box-shadow:4px 4px 4px  
4px #FF8470; -webkit-box-shadow:4px 4px  
4px 4px #FF8470; box-shadow:4px 4px 4px  
4px #FF8470 }
```

Background

The CSS property to change the background color of an element to Hex FF8470 is called "background". The background property can be set on classes, ids or directly on the HTML element.

```
.background, #background, body{  
background:#FF8470 }
```

If only the background color should be changed can be used:

```
.background{ background-color:#FF8470 }
```

This example shows the color as background, it is applied via the CSS property "background".

To optimize and compress your CSS code, you can use our [online CSS compressor and optimizer](#) based on csstidy. If you want to create a linear or radial gradient as background or border, check our [CSS Gradient Generator](#).

Hey! You found this booklet interesting? Support Converting Colors with the new Membership Option!

The pro membership hides all ads, plus gives you double the colors in the color bucket, and more awesome pro features!

[Learn more, Memberships starting at \\$2.50/m!](#)

**Follow me
on Twitter!**

@ConvertingColor