

# Converting Colors

Hex(FF857D)

Have a look what the booklet for  
Hex(FF857D) contains.

<b>Hex(FF857D)</b> .....	3
<b><i>Conversions</i></b> .....	4
<b><i>Details</i></b> .....	6
<b><i>Harmonies</i></b> .....	11
<b><i>Previews</i></b> .....	23
<b><i>Color Blindness Simulation</i></b> .....	26
<b><i>CSS Examples</i></b> .....	29

# **Color**

**Hex(F857D)**

# Conversions

## Conversions Part 1

Format	Color
Hex	FF857D
RGB	255, 133, 125
RGB Percent	100%, 52%, 49%
CMY	0.0000, 0.4784, 0.5098
CMYK	0.00, 0.48, 0.51, 0.00
HSL	4°, 100%, 75%
HSV	4°, 51%, 100%
XYZ	53.3292, 39.5157, 24.2186
YIQ	168.5660, 75.2800, 23.3760

# Conversions

## Conversions Part 2

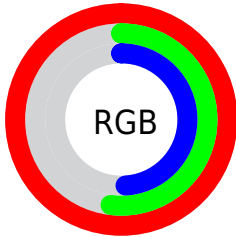
Format	Color
R <sub>Y</sub> B	255, 134, 125
Decimal	16745853
CIE Lab	69.12, 45.48, 25.59
CIE LCh	69, 52.186, 29.359
Yxy	39.5157, 0.4556, 0.3376
Android (android.graphics.Color)	4294935933 (0xFFFF857D)
YUV	168.5660, -21.4780, 75.8026
Hunter-Lab	62.8615, 41.4245, 21.1605

# Details

The Hex color **FF857D** is a light color, and the websafe version is hex **FF9999**. A complement of this color would be **7DF7FF**, and the grayscale version is **A9A9A9**.

A 20% lighter version of the original color is **FFBCB2**, and **C2504C** is the 20% darker color. If you saturate the color by 10%, you get **FF6D64**, and if you desaturate by 10%, it is **FF9D97**.

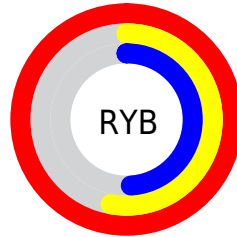
# Distribution



Red (100%)

Green (52%)

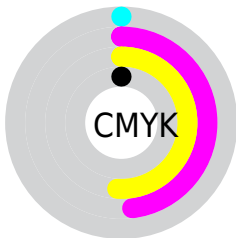
Blue (49%)



Red (100%)

Yellow (53%)

Blue (49%)

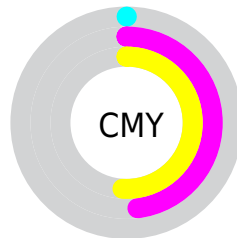


Cyan (0%)

Magenta (48%)

Yellow (51%)

Black (0%)



Cyan (0%)

Magenta (48%)

Yellow (51%)

# Brightness & Saturation Gradients

These gradients show how the Hex color FF857D changes by changing the brightness by 10 percent. The first figure shows a shift by +10% for each color and the second figure -10%.

Similar to the brightness gradients but the following saturation gradients show a change of the Hex color FF857D by changing the saturation by 10% instead.



 FF857D

 FF857D

FFFFFF

 E06A64

 FFBCB2

 C2504C

 FFD9CD

 A43535

 FFF6E9

 871820

 6A000A

 4D0000

 330002

 000000

 FF857D

 FF857D

 FF6D64

 FF9D97

 FF554A

 FFB5B0

 FF3D31

 FFCDCA

 FF2517

 FFE5E3

 FF1000

 FFFDFD

FFFFFF

# Harmonies

## Analogous

The Analogous color harmony consists of three colors that are next to each other on the color wheel.



FE80AC



FF857D



EA9458

# Triad

The Triadic color harmony groups three colors that are evenly spaced from another and form a triangle on the color wheel.



FF857D



58BC77



4BAEFF

# Complementary

The Complementary color scheme is a pair of colors which are on the opposite of each other on the color wheel.



FF857D



7DF7FF

# Split Complementary

Split-complementary colors differ from the complementary color scheme. The scheme consists of three colors, the original color and two neighbors of the complement color.



00BAF9



FF857D



00C0A6

# Square

The Square scheme is like the rectangle color scheme, but the four colors are evenly spaced on the color wheel.



FF857D



95B453



00C0D6



AA9DFB

# Rectangle

The Rectangle color scheme consists of four colors that form a rectangle on the color wheel.



FF857D



D3A049



00C0D6



00B3FF



# Sweetspot

The Sweet Spot groups the original color and five complimentary colors.



FF857D



FFDBD9



FF7DF9



806A69



000000



808080



# Same Dimension

The Same Dimension uses a secret algorithm to generate beautiful new colors.



FF857D



FF6D63



FFC47D



807473



BF0C00



400400



# Inverse Universe

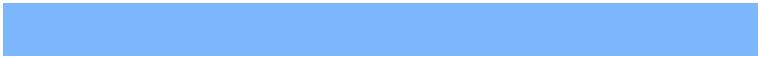
The Inverse Universe completely reimagines the original color for something new.



7DF7FF



63F5FF



7DB8FF



737F80



00B3BF



003C40



# Previews

## White Background



This preview shows how the Hex color FF857D looks on a white background.

## Color Contrast Check

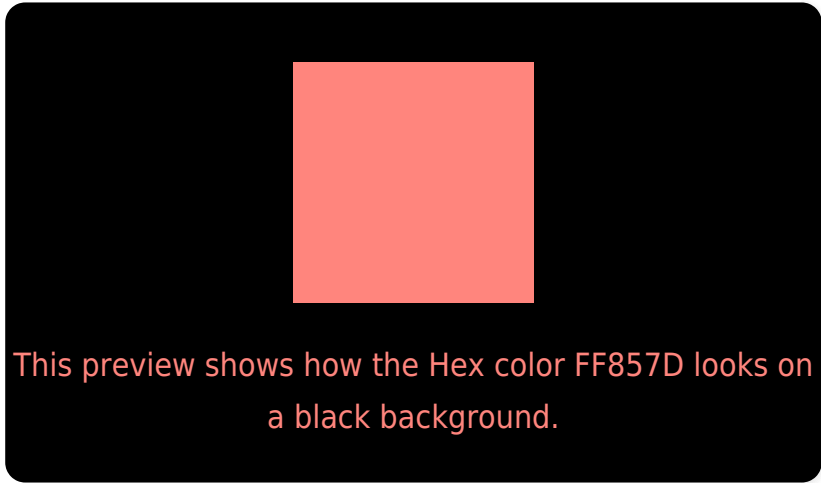
Large Text (above 18pt) WCAG AA × Fail

Any Text WCAG AA × Fail

Large Text (above 18pt) WCAG AAA × Fail

Any Text WCAG AAA × Fail

# Black Background



## Color Contrast Check

Large Text (above 18pt) WCAG AA ✓ Pass

Any Text WCAG AA ✓ Pass

Large Text (above 18pt) WCAG AAA ✓ Pass

Any Text WCAG AAA ✓ Pass

If you want to check with other color combinations, try the [Color Contrast Checker](#).



## Hex FF857D Background



This preview shows how black text looks on a background with the Hex color FF857D.

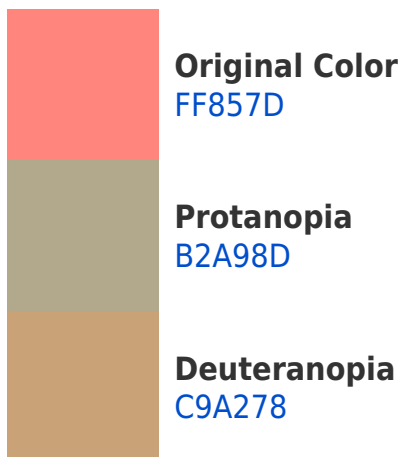


This preview shows how white text looks on a background with the Hex color FF857D.

# Color Blindness Simulation

Color vision deficiency is a very complex topic, and I could not describe the different causes any better than Wikipedia does, so if you want to learn more, you should check out their [article about color blindness](#).

## Dichromacy



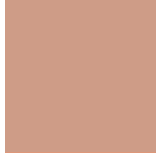


**Tritanopia**  
FF838D

# Trichromacy



**Original Color**  
FF857D



**Protanomaly**  
CE9C87



**Deuteranomaly**  
DD977A



**Tritanomaly**  
FF8487

# Monochromacy



**Original Color**  
FF857D



**Achromatopsia**  
A9A9A9



**Achromatomaly**  
C89C99

# CSS Examples

## Text

The CSS property to change the color of the text to Hex FF857D is called "color". The color property can be set on classes, ids or directly on the HTML element.

This example shows how text in the color #FF857D looks like.

```
.text, #text, p{  
    color:#FF857D  
}
```

If you want to add a text shadow in that color use the text-shadow property, you can generate a text shadow directly with our [CSS Text Shadow Generator](#).

Here you see how black text with a 4 pixel #FF857D colored shadow looks like.

```
.shadow{ text-shadow: 4px 4px 2px #FF857D
}
```

## Border

The CSS property to change the border of an element to Hex FF857D is called "border". The border property can be set on classes, ids or directly on the HTML element.

This example shows the color as border, it can be applied via the CSS property "border" or "border-color".

```
.border, #border, table{ border:4px solid
#FF857D }
```

If only the border color should be changed use the property `border-color`.

```
.border{ border-color:#FF857D }
```

If you want to add a box shadow in that color use:

Here you see how a box with a 4 pixel #FF857D colored shadow looks like.

```
.boxshadow{ -moz-box-shadow:4px 4px 4px  
4px #FF857D; -webkit-box-shadow:4px 4px  
4px 4px #FF857D; box-shadow:4px 4px 4px  
4px #FF857D }
```

# Background

The CSS property to change the background color of an element to Hex FF857D is called "background". The background property can be set on classes, ids or directly on the HTML element.

```
.background, #background, body{  
background:#FF857D }
```

If only the background color should be changed can be used:

```
.background{ background-color:#FF857D }
```

This example shows the color as background, it is applied via the CSS property "background".

To optimize and compress your CSS code, you can use our [online CSS compressor and optimizer](#) based on csstidy. If you want to create a linear or radial gradient as background or border, check our [CSS Gradient Generator](#).



Hey! You found this booklet interesting? Support Converting Colors with the new Membership Option!

The pro membership hides all ads, plus gives you double the colors in the color bucket, and more awesome pro features!

**[Learn more, Memberships starting at \\$2.50/m!](#)**

**Follow me  
on Twitter!**

@ConvertingColor