

# Converting Colors

Hex(FF867B)

Have a look what the booklet for  
Hex(FF867B) contains.

<b>Hex(FF867B)</b> .....	3
<b><i>Conversions</i></b> .....	4
<b><i>Details</i></b> .....	6
<b><i>Harmonies</i></b> .....	11
<b><i>Previews</i></b> .....	23
<b><i>Color Blindness Simulation</i></b> .....	26
<b><i>CSS Examples</i></b> .....	29

# **Color**

**Hex(F F 8 6 7 B)**

# Conversions

## Conversions Part 1

Format	Color
Hex	FF867B
RGB	255, 134, 123
RGB Percent	100%, 53%, 48%
CMY	0.0000, 0.4745, 0.5176
CMYK	0.00, 0.47, 0.52, 0.00
HSL	5°, 100%, 74%
HSV	5°, 52%, 100%
XYZ	53.3402, 39.7403, 23.5982
YIQ	168.9250, 75.6470, 22.2310

# Conversions

## Conversions Part 2

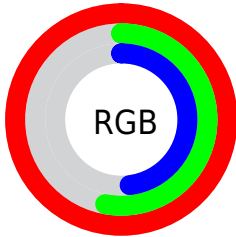
Format	Color
R <sub>Y</sub> B	255, 135, 123
Decimal	16746107
CIE Lab	69.28, 44.82, 26.91
CIE LCh	69, 52.275, 30.978
Yxy	39.7403, 0.4572, 0.3406
Android (android.graphics.Color)	4294936187 (0xFFFF867B)
YUV	168.9250, -22.6410, 75.4878
Hunter-Lab	63.0399, 40.7153, 21.9334

# Details

The Hex color **FF867B** is a light color, and the websafe version is hex **FF9999**. A complement of this color would be **7BF4FF**, and the grayscale version is **A9A9A9**.

A 20% lighter version of the original color is **FFBDB0**, and **C2514A** is the 20% darker color. If you saturate the color by 10%, you get **FF6F62**, and if you desaturate by 10%, it is **FF9D95**.

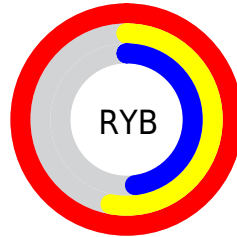
# Distribution



Red (100%)

Green (53%)

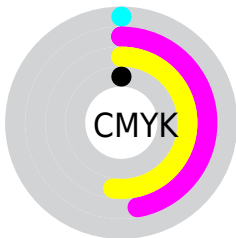
Blue (48%)



Red (100%)

Yellow (53%)

Blue (48%)

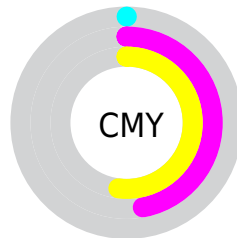


Cyan (0%)

Magenta (47%)

Yellow (52%)

Black (0%)



Cyan (0%)

Magenta (47%)

Yellow (52%)

# Brightness & Saturation Gradients

These gradients show how the Hex color FF867B changes by changing the brightness by 10 percent. The first figure shows a shift by +10% for each color and the second figure -10%.

Similar to the brightness gradients but the following saturation gradients show a change of the Hex color FF867B by changing the saturation by 10% instead.



 FF867B

 FF867B

FFFFFF

 E06B62

 FFBDB0

 C2514A

 FFDACB

 A43733

 FFF7E7

 861A1E

 690007

 4D0000

 330002

 000000

 FF867B

 FF867B

 FF6F62

 FF9D95

 FF5748

 FFB5AE

 FF402F

 FFCCC8

 FF2915

 FFE4E1

 FF1500

 FFFBFB

FFFFFF

# Harmonies

## Analogous

The Analogous color harmony consists of three colors that are next to each other on the color wheel.



FF81AA



FF867B



E99657

# Triad

The Triadic color harmony groups three colors that are evenly spaced from another and form a triangle on the color wheel.



FF867B



54BD79



52AEFF

# Complementary

The Complementary color scheme is a pair of colors which are on the opposite of each other on the color wheel.



FF867B



7BF4FF

# Split Complementary

Split-complementary colors differ from the complementary color scheme. The scheme consists of three colors, the original color and two neighbors of the complement color.



00BAFB



FF867B



00C1A9

# Square

The Square scheme is like the rectangle color scheme, but the four colors are evenly spaced on the color wheel.



FF867B



93B554



00C0D9



AE9CFB

# Rectangle

The Rectangle color scheme consists of four colors that form a rectangle on the color wheel.



FF867B



D1A249



00C0D9



03B2FF

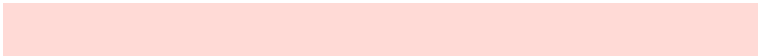


# Sweetspot

The Sweet Spot groups the original color and five complimentary colors.



FF867B



FFDAD6



FF7BF4



806967



000000



808080



# Same Dimension

The Same Dimension uses a secret algorithm to generate beautiful new colors.



FF867B



FF6E61



FFC87B



807473



BF1000



400500



# Inverse Universe

The Inverse Universe completely reimagines the original color for something new.



7BF4FF



61F2FF



7BB2FF



737E80



00AFBF



003A40



# Previews

## White Background



This preview shows how the Hex color FF867B looks on a white background.

## Color Contrast Check

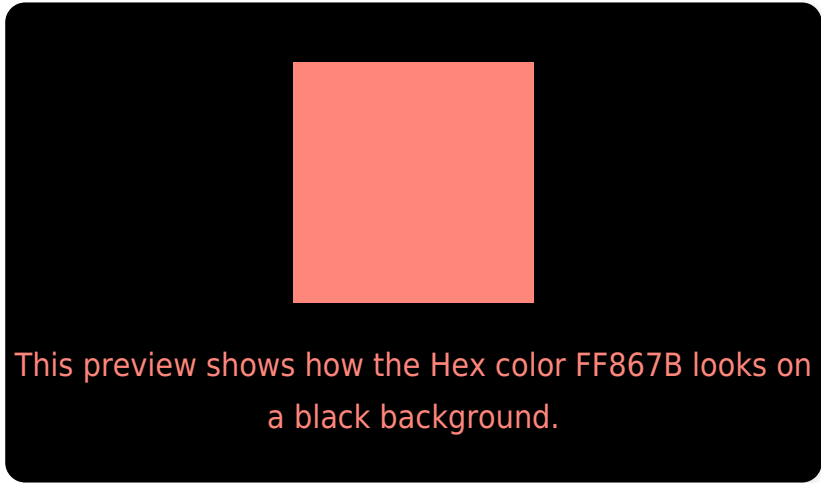
Large Text (above 18pt) WCAG AA × Fail

Any Text WCAG AA × Fail

Large Text (above 18pt) WCAG AAA × Fail

Any Text WCAG AAA × Fail

# Black Background



## Color Contrast Check

Large Text (above 18pt) WCAG AA ✓ Pass

Any Text WCAG AA ✓ Pass

Large Text (above 18pt) WCAG AAA ✓ Pass

Any Text WCAG AAA ✓ Pass

If you want to check with other color combinations, try the [Color Contrast Checker](#).



## Hex FF867B Background



This preview shows how black text looks on a background with the Hex color FF867B.

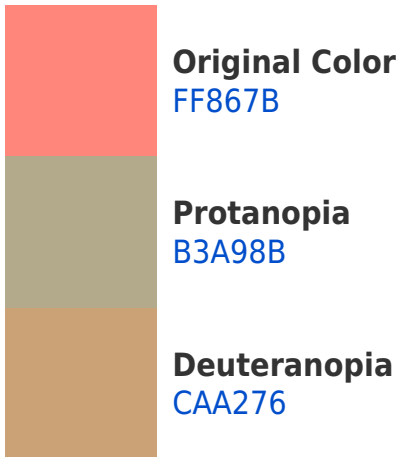


This preview shows how white text looks on a background with the Hex color FF867B.

# Color Blindness Simulation

Color vision deficiency is a very complex topic, and I could not describe the different causes any better than Wikipedia does, so if you want to learn more, you should check out their [article about color blindness](#).

## Dichromacy



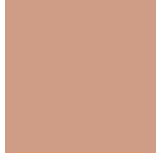


**Tritanopia**  
FF848D

# Trichromacy



**Original Color**  
FF867B



**Protanomaly**  
CF9C85



**Deuteranomaly**  
DD9878

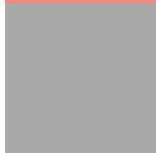


**Tritanomaly**  
FF8586

# Monochromacy



**Original Color**  
FF867B



**Achromatopsia**  
A9A9A9



**Achromatomaly**  
C89C98

# CSS Examples

## Text

The CSS property to change the color of the text to Hex FF867B is called "color". The color property can be set on classes, ids or directly on the HTML element.

This example shows how text in the color #FF867B looks like.

```
.text, #text, p{  
    color:#FF867B  
}
```

If you want to add a text shadow in that color use the text-shadow property, you can generate a text shadow directly with our [CSS Text Shadow Generator](#).

Here you see how black text with a 4 pixel #FF867B colored shadow looks like.

```
.shadow{ text-shadow: 4px 4px 2px #FF867B
}
```

## Border

The CSS property to change the border of an element to Hex FF867B is called "border". The border property can be set on classes, ids or directly on the HTML element.

This example shows the color as border, it can be applied via the CSS property "border" or "border-color".

```
.border, #border, table{ border:4px solid
#FF867B }
```

If only the border color should be changed use the property `border-color`.

```
.border{ border-color:#FF867B }
```

If you want to add a box shadow in that color use:

Here you see how a box with a 4 pixel #FF867B colored shadow looks like.

```
.boxshadow{ -moz-box-shadow:4px 4px 4px  
4px #FF867B; -webkit-box-shadow:4px 4px  
4px 4px #FF867B; box-shadow:4px 4px 4px  
4px #FF867B }
```

# Background

The CSS property to change the background color of an element to Hex FF867B is called "background". The background property can be set on classes, ids or directly on the HTML element.

```
.background, #background, body{  
background:#FF867B }
```

If only the background color should be changed can be used:

```
.background{ background-color:#FF867B }
```

This example shows the color as background, it is applied via the CSS property "background".

To optimize and compress your CSS code, you can use our [online CSS compressor and optimizer](#) based on csstidy. If you want to create a linear or radial gradient as background or border, check our [CSS Gradient Generator](#).



Hey! You found this booklet interesting? Support Converting Colors with the new Membership Option!

The pro membership hides all ads, plus gives you double the colors in the color bucket, and more awesome pro features!

**[Learn more, Memberships starting at \\$2.50/m!](#)**

**Follow me  
on Twitter!**

@ConvertingColor