

Converting Colors

Hex(FF8A7A)

Have a look what the booklet for
Hex(FF8A7A) contains.

Hex(FF8A7A)	3
<i>Conversions</i>	4
<i>Details</i>	6
<i>Harmonies</i>	11
<i>Previews</i>	23
<i>Color Blindness Simulation</i>	26
<i>CSS Examples</i>	29

Color

Hex(F F 8 A 7 A)

Conversions

Conversions Part 1

Format	Color
Hex	FF8A7A
RGB	255, 138, 122
RGB Percent	100%, 54%, 48%
CMY	0.0000, 0.4588, 0.5216
CMYK	0.00, 0.46, 0.52, 0.00
HSL	7°, 100%, 74%
HSV	7°, 52%, 100%
XYZ	53.8413, 40.8421, 23.4579
YIQ	171.1590, 74.8680, 19.8280

Conversions

Conversions Part 2

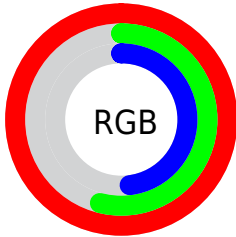
Format	Color
R _Y B	255, 140, 122
Decimal	16747130
CIE Lab	70.07, 42.74, 28.49
CIE LCh	70, 51.366, 33.689
Yxy	40.8421, 0.4557, 0.3457
Android (android.graphics.Color)	4294937210 (0xFFFF8A7A)
YUV	171.1590, -24.2354, 73.5286
Hunter-Lab	63.9078, 38.5447, 22.9726

Details

The Hex color **FF8A7A** is a light color, and the websafe version is hex **FF9999**. A complement of this color would be **7AEFFF**, and the grayscale version is **ABABAB**.

A 20% lighter version of the original color is **FFC1AF**, and **C25549** is the 20% darker color. If you saturate the color by 10%, you get **FF7461**, and if you desaturate by 10%, it is **FFA094**.

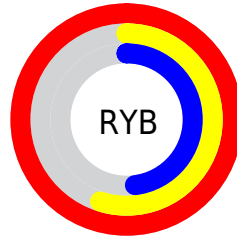
Distribution



Red (100%)

Green (54%)

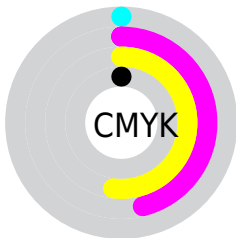
Blue (48%)



Red (100%)

Yellow (55%)

Blue (48%)

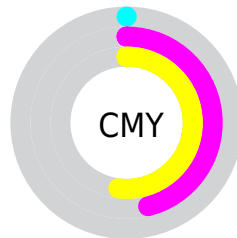


Cyan (0%)

Magenta (46%)

Yellow (52%)

Black (0%)



Cyan (0%)

Magenta (46%)

Yellow (52%)

Brightness & Saturation Gradients

These gradients show how the Hex color FF8A7A changes by changing the brightness by 10 percent. The first figure shows a shift by +10% for each color and the second figure -10%.

Similar to the brightness gradients but the following saturation gradients show a change of the Hex color FF8A7A by changing the saturation by 10% instead.

 FF8A7A

 FF8A7A

FFFFFF

 E06F61

 FFC1AF

 C25549

 FFDECA

 A43B32

 FFFBE6

 87201D

 6A0006

 4D0000

 340002

 000000

 FF8A7A

 FF8A7A

 FF7461

 FFA094

 FF5D47

 FFB7AD

 FF472E

 FFCDC7

 FF3014

 FFE4E0

 FF1F00

 FFFAFA

FFFFFF

Harmonies

Analogous

The Analogous color harmony consists of three colors that are next to each other on the color wheel.



FF83A7



FF8A7A



E89A58

Triad

The Triadic color harmony groups three colors that are evenly spaced from another and form a triangle on the color wheel.



FF8A7A



51C080



63AEFF

Complementary

The Complementary color scheme is a pair of colors which are on the opposite of each other on the color wheel.



FF8A7A



7AEFFF

Split Complementary

Split-complementary colors differ from the complementary color scheme. The scheme consists of three colors, the original color and two neighbors of the complement color.



00BBFE



FF8A7A



00C3B0

Square

The Square scheme is like the rectangle color scheme, but the four colors are evenly spaced on the color wheel.



FF8A7A



91B85A



00C2DE



B69DF9

Rectangle

The Rectangle color scheme consists of four colors that form a rectangle on the color wheel.



FF8A7A



CFA54C



00C2DE



35B3FF

Sweetspot

The Sweet Spot groups the original color and five complimentary colors.



FF8A7A



FFDBD6



FF7AEF



806A67



000000



808080

Same Dimension

The Same Dimension uses a secret algorithm to generate beautiful new colors.



FF8A7A



FF725E



FFCC7A



807473



BF1700



400800

Inverse Universe

The Inverse Universe completely reimagines the original color for something new.



7AEFFF



5EECFE



7AADFF



737E80



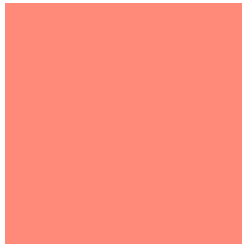
00A8BF



003840

Previews

White Background



This preview shows how the Hex color FF8A7A looks on a white background.

Color Contrast Check

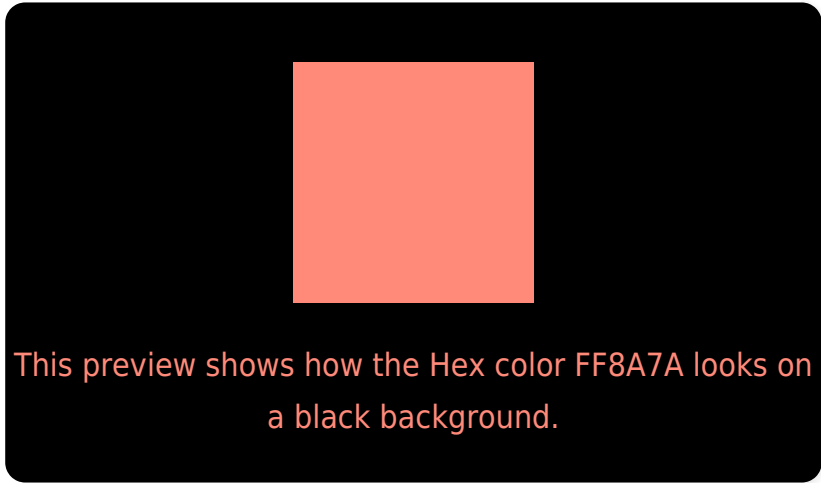
Large Text (above 18pt) WCAG AA × Fail

Any Text WCAG AA × Fail

Large Text (above 18pt) WCAG AAA × Fail

Any Text WCAG AAA × Fail

Black Background



Color Contrast Check

Large Text (above 18pt) WCAG AA ✓ Pass

Any Text WCAG AA ✓ Pass

Large Text (above 18pt) WCAG AAA ✓ Pass

Any Text WCAG AAA ✓ Pass

If you want to check with other color combinations, try the [Color Contrast Checker](#).

Hex FF8A7A Background



This preview shows how black text looks on a background with the Hex color FF8A7A.

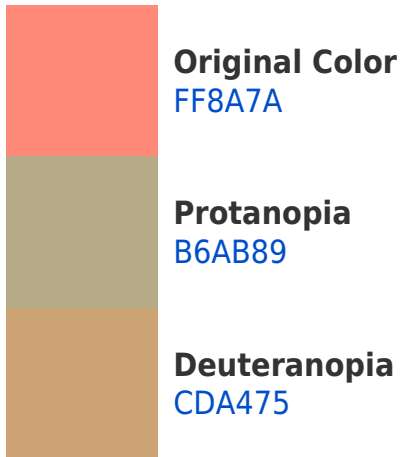


This preview shows how white text looks on a background with the Hex color FF8A7A.

Color Blindness Simulation

Color vision deficiency is a very complex topic, and I could not describe the different causes any better than Wikipedia does, so if you want to learn more, you should check out their [article about color blindness](#).

Dichromacy



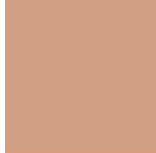


Tritanopia
FF8891

Trichromacy



Original Color
FF8A7A



Protanomaly
D19F84



Deuteranomaly
DF9B77

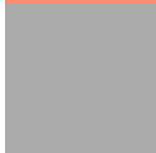


Tritanomaly
FF8989

Monochromacy



Original Color
FF8A7A



Achromatopsia
ABABAB



Achromatomaly
CA9F99

CSS Examples

Text

The CSS property to change the color of the text to Hex FF8A7A is called "color". The color property can be set on classes, ids or directly on the HTML element.

This example shows how text in the color #FF8A7A looks like.

```
.text, #text, p{  
    color:#FF8A7A  
}
```

If you want to add a text shadow in that color use the text-shadow property, you can generate a text shadow directly with our [CSS Text Shadow Generator](#).

Here you see how black text with a 4 pixel #FF8A7A colored shadow looks like.

```
.shadow{ text-shadow: 4px 4px 2px #FF8A7A
}
```

Border

The CSS property to change the border of an element to Hex FF8A7A is called "border". The border property can be set on classes, ids or directly on the HTML element.

This example shows the color as border, it can be applied via the CSS property "border" or "border-color".

```
.border, #border, table{ border:4px solid
#FF8A7A }
```

If only the border color should be changed use the property border-color.

```
.border{ border-color:#FF8A7A }
```

If you want to add a box shadow in that color use:

Here you see how a box with a 4 pixel #FF8A7A colored shadow looks like.

```
.boxshadow{ -moz-box-shadow:4px 4px 4px  
4px #FF8A7A; -webkit-box-shadow:4px 4px  
4px 4px #FF8A7A; box-shadow:4px 4px 4px  
4px #FF8A7A }
```

Background

The CSS property to change the background color of an element to Hex FF8A7A is called "background". The background property can be set on classes, ids or directly on the HTML element.

```
.background, #background, body{  
background:#FF8A7A }
```

If only the background color should be changed can be used:

```
.background{ background-color:#FF8A7A }
```

This example shows the color as background, it is applied via the CSS property "background".

To optimize and compress your CSS code, you can use our [online CSS compressor and optimizer](#) based on csstidy. If you want to create a linear or radial gradient as background or border, check our [CSS Gradient Generator](#).

Hey! You found this booklet interesting? Support Converting Colors with the new Membership Option!

The pro membership hides all ads, plus gives you double the colors in the color bucket, and more awesome pro features!

[Learn more, Memberships starting at \\$2.50/m!](#)

**Follow me
on Twitter!**

@ConvertingColor