

Converting Colors

Hex(FF8EA6)

Have a look what the booklet for
Hex(FF8EA6) contains.

Hex(FF8EA6)	3
<i>Conversions</i>	4
<i>Details</i>	6
<i>Harmonies</i>	11
<i>Previews</i>	23
<i>Color Blindness Simulation</i>	26
<i>CSS Examples</i>	29

Color

Hex(F F 8 E A 6)

Conversions

Conversions Part 1

Format	Color
Hex	FF8EA6
RGB	255, 142, 166
RGB Percent	100%, 56%, 65%
CMY	0.0000, 0.4431, 0.3490
CMYK	0.00, 0.44, 0.35, 0.00
HSL	347°, 100%, 78%
HSV	347°, 44%, 100%
XYZ	57.7959, 43.3592, 41.3994
YIQ	178.5230, 59.6440, 31.4200

Conversions

Conversions Part 2

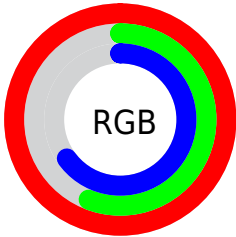
Format	Color
R _Y B	255, 142, 166
Decimal	16748198
CIE Lab	71.80, 45.16, 6.49
CIE LCh	72, 45.624, 8.172
Yxy	43.3592, 0.4054, 0.3042
Android (android.graphics.Color)	4294938278 (0xFFFF8EA6)
YUV	178.5230, -6.1738, 67.0703
Hunter-Lab	65.8477, 41.4399, 8.8169

Details

The Hex color **FF8EA6** is a light color, and the websafe version is hex **FF9999**. A complement of this color would be **8EFFE7**, and the grayscale version is **B3B3B3**.

A 20% lighter version of the original color is **FFC6DD**, and **C35972** is the 20% darker color. If you saturate the color by 10%, you get **FF7592**, and if you desaturate by 10%, it is **FFA8BA**.

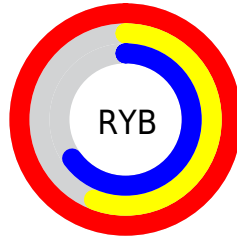
Distribution



Red (100%)

Green (56%)

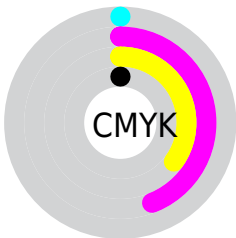
Blue (65%)



Red (100%)

Yellow (56%)

Blue (65%)

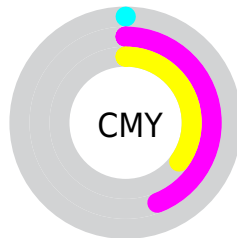


Cyan (0%)

Magenta (44%)

Yellow (35%)

Black (0%)



Cyan (0%)

Magenta (44%)

Yellow (35%)

Brightness & Saturation Gradients


These gradients show how the Hex color FF8EA6 changes by changing the brightness by 10 percent. The first figure shows a shift by +10% for each color and the second figure -10%.

Similar to the brightness gradients but the following saturation gradients show a change of the Hex color FF8EA6 by changing the saturation by 10% instead.

 FF8EA6

 FF8EA6

FFFFFF

 E1738C

 FFC6DD

 C35972

 FFE2F9

 A63E5A

 8A2343

 6E002D

 520018

 390001

 150000

 000000

 FF8EA6

 FF8EA6

 FF7592

 FFA8BA

 FF5B7E

 FFC1CE

 FF426A

 FFDBE2

 FF2856

 FFF4F6

 FF0F42

FFFFFF

 FF0036

Harmonies

Analogous

The Analogous color harmony consists of three colors that are next to each other on the color wheel.



ED93D0



FF8EA6



FA957F

Triad

The Triadic color harmony groups three colors that are evenly spaced from another and form a triangle on the color wheel.



FF8EA6



92BC6D



0DBDFC

Complementary

The Complementary color scheme is a pair of colors which are on the opposite of each other on the color wheel.



FF8EA6



8EFFE7

Split Complementary

Split-complementary colors differ from the complementary color scheme. The scheme consists of three colors, the original color and two neighbors of the complement color.



00C4E2



FF8EA6



5BC390

Square

The Square scheme is like the rectangle color scheme, but the four colors are evenly spaced on the color wheel.



FF8EA6



BFB15B



00C6BA



82B0FF

Rectangle

The Rectangle color scheme consists of four colors that form a rectangle on the color wheel.



FF8EA6



ED9E6A



00C6BA



00C0F6

Sweetspot

The Sweet Spot groups the original color and five complimentary colors.



FF8EA6



FFDEE5



E78EFF



806B6F



000000



808080

Same Dimension

The Same Dimension uses a secret algorithm to generate beautiful new colors.



FF8EA6



FF7895



FFAE8E



807375



BF0029



40000E

Inverse Universe

The Inverse Universe completely reimagines the original color for something new.



FF8EA6



FF7895



8EDFFF



807375



BF0029



40000E

Previews

White Background



This preview shows how the Hex color FF8EA6 looks on a white background.

Color Contrast Check

Large Text (above 18pt) WCAG AA × Fail

Any Text WCAG AA × Fail

Large Text (above 18pt) WCAG AAA × Fail

Any Text WCAG AAA × Fail

Black Background



Color Contrast Check

Large Text (above 18pt) WCAG AA ✓ Pass

Any Text WCAG AA ✓ Pass

Large Text (above 18pt) WCAG AAA ✓ Pass

Any Text WCAG AAA ✓ Pass

If you want to check with other color combinations, try the [Color Contrast Checker](#).

Hex FF8EA6 Background



This preview shows how black text looks on a background with the Hex color FF8EA6.

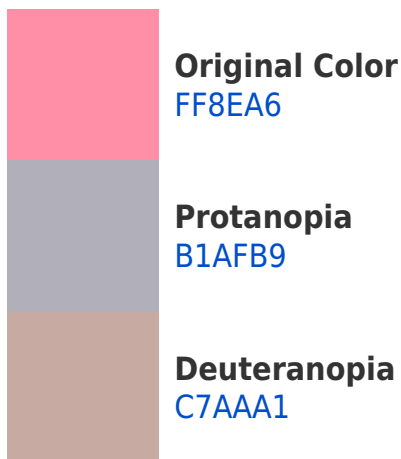


This preview shows how white text looks on a background with the Hex color FF8EA6.

Color Blindness Simulation

Color vision deficiency is a very complex topic, and I could not describe the different causes any better than Wikipedia does, so if you want to learn more, you should check out their [article about color blindness](#).

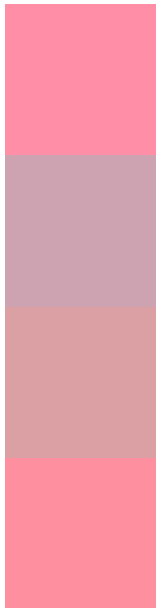
Dichromacy





Tritanopia
FE909B

Trichromacy



Original Color
FF8EA6

Protanomaly
CDA3B2

Deuteranomaly
DBA0A3

Tritanomaly
FE8F9F

Monochromacy



Original Color
FF8EA6

Achromatopsia
B3B3B3

Achromatomaly
CFA6AE

CSS Examples

Text

The CSS property to change the color of the text to Hex FF8EA6 is called "color". The color property can be set on classes, ids or directly on the HTML element.

This example shows how text in the color #FF8EA6 looks like.

```
.text, #text, p{  
    color:#FF8EA6  
}
```

If you want to add a text shadow in that color use the text-shadow property, you can generate a text shadow directly with our [CSS Text Shadow Generator](#).

Here you see how black text with a 4 pixel #FF8EA6 colored shadow looks like.

```
.shadow{ text-shadow: 4px 4px 2px #FF8EA6
}
```

Border

The CSS property to change the border of an element to Hex FF8EA6 is called "border". The border property can be set on classes, ids or directly on the HTML element.

This example shows the color as border, it can be applied via the CSS property "border" or "border-color".

```
.border, #border, table{ border:4px solid
#FF8EA6 }
```

If only the border color should be changed use the property `border-color`.

```
.border{ border-color:#FF8EA6 }
```

If you want to add a box shadow in that color use:

Here you see how a box with a 4 pixel #FF8EA6 colored shadow looks like.

```
.boxshadow{ -moz-box-shadow:4px 4px 4px  
4px #FF8EA6; -webkit-box-shadow:4px 4px  
4px 4px #FF8EA6; box-shadow:4px 4px 4px  
4px #FF8EA6 }
```

Background

The CSS property to change the background color of an element to Hex FF8EA6 is called "background". The background property can be set on classes, ids or directly on the HTML element.

```
.background, #background, body{  
background:#FF8EA6 }
```

If only the background color should be changed can be used:

```
.background{ background-color:#FF8EA6 }
```

This example shows the color as background, it is applied via the CSS property "background".

To optimize and compress your CSS code, you can use our [online CSS compressor and optimizer](#) based on csstidy. If you want to create a linear or radial gradient as background or border, check our [CSS Gradient Generator](#).

Hey! You found this booklet interesting? Support Converting Colors with the new Membership Option!

The pro membership hides all ads, plus gives you double the colors in the color bucket, and more awesome pro features!

[Learn more, Memberships starting at \\$2.50/m!](#)

**Follow me
on Twitter!**

@ConvertingColor