

Converting Colors

Hex(FF9767)

Have a look what the booklet for
Hex(FF9767) contains.

Hex(FF9767)	3
<i>Conversions</i>	4
<i>Details</i>	6
<i>Harmonies</i>	11
<i>Previews</i>	23
<i>Color Blindness Simulation</i>	26
<i>CSS Examples</i>	29

Color

Hex(F9767)

Conversions

Conversions Part 1

Format	Color
Hex	FF9767
RGB	255, 151, 103
RGB Percent	100%, 59%, 40%
CMY	0.0000, 0.4078, 0.5961
CMYK	0.00, 0.41, 0.60, 0.00
HSL	19°, 100%, 70%
HSV	19°, 60%, 100%
XYZ	54.7548, 44.3725, 18.5108
YIQ	176.6240, 77.3920, 7.1200

Conversions

Conversions Part 2

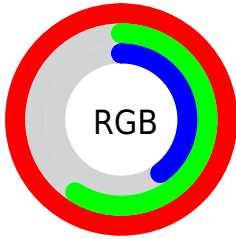
Format	Color
RYB	255, 173, 103
Decimal	16750439
CIELab	72.48, 34.67, 41.75
CIElCh	72, 54.270, 50.293
Yxy	44.3725, 0.4655, 0.3772
Android (android.graphics.Color)	4294940519 (0xFFFF9767)
YUV	176.6240, -36.2966, 68.7358
Hunter-Lab	66.6127, 30.1526, 30.1529

Details

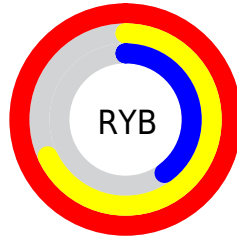
The Hex color **FF9767** is a light color, and the websafe version is hex **FF9966**. A complement of this color would be **67CFFF**, and the grayscale version is **B1B1B1**.

A 20% lighter version of the original color is **FFCE9B**, and **C26336** is the 20% darker color. If you saturate the color by 10%, you get **FF864E**, and if you desaturate by 10%, it is **FFA881**.

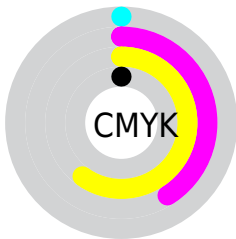
Distribution



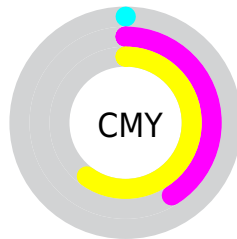
- Red (100%)
- Green (59%)
- Blue (40%)



- Red (100%)
- Yellow (68%)
- Blue (40%)



- Cyan (0%)
- Magenta (41%)
- Yellow (60%)
- Black (0%)



- Cyan (0%)
- Magenta (41%)
- Yellow (60%)

Brightness & Saturation Gradients

These gradients show how the Hex color FF9767 changes by changing the brightness by 10 percent. The first figure shows a shift by +10% for each color and the second figure -10%.

Similar to the brightness gradients but the following saturation gradients show a change of the Hex color FF9767 by changing the saturation by 10% instead.

 FF9767

 FF9767

FFFFFF

 E07D4E

 FFCE9B

 C26336

 FFE6B6

 A44A1F

 FFFFD2

 863106

 FFFFEF

 691800

 4D0000

 330000

 060000

 000000

FF9767

FF9767

FF864E

FFA881

FF7434

FFBA9A

FF631A

FFCBB3

FF5101

FFDDCD

FF5100

FFEEE7

FFFFFF

Harmonies

Analogous

The Analogous color harmony consists of three colors that are next to each other on the color wheel.



FF8992



FF9767



DDA94D

Triad

The Triadic color harmony groups three colors that are evenly spaced from another and form a triangle on the color wheel.



FF9767



00CA9F



9BABFF

Complementary

The Complementary color scheme is a pair of colors which are on the opposite of each other on the color wheel.



FF9767



67CFFF

Split Complementary

Split-complementary colors differ from the complementary color scheme. The scheme consists of three colors, the original color and two neighbors of the complement color.



00BCFF



FF9767



00CBD3

Square

The Square scheme is like the rectangle color scheme, but the four colors are evenly spaced on the color wheel.



FF9767



73C470



00C6FD



DF97F2

Rectangle

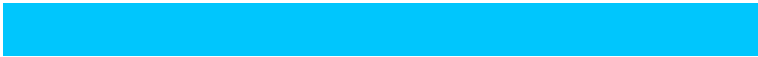
The Rectangle color scheme consists of four colors that form a rectangle on the color wheel.



FF9767



BEB54C



00C6FD



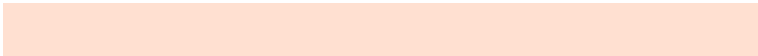
7BB1FF

Sweetspot

The Sweet Spot groups the original color and five complimentary colors.



FF9767



FFE0D1



FF67D1



806C63



000000



808080

Same Dimension

The Same Dimension uses a secret algorithm to generate beautiful new colors.



FF9767



FF8147



FFE167



807773



BF3C00



401400

Inverse Universe

The Inverse Universe completely reimagines the original color for something new.



67CFFF



47C5FF



6785FF



737B80



0083BF



002C40

Previews

White Background



This preview shows how the Hex color FF9767 looks on a white background.

Color Contrast Check

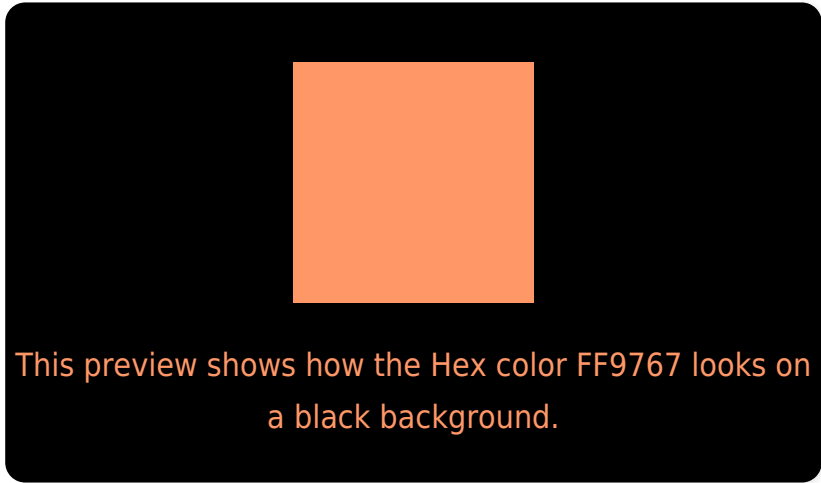
Large Text (above 18pt) WCAG AA × Fail

Any Text WCAG AA × Fail

Large Text (above 18pt) WCAG AAA × Fail

Any Text WCAG AAA × Fail

Black Background



Color Contrast Check

Large Text (above 18pt) WCAG AA ✓ Pass

Any Text WCAG AA ✓ Pass

Large Text (above 18pt) WCAG AAA ✓ Pass

Any Text WCAG AAA ✓ Pass

If you want to check with other color combinations, try the [Color Contrast Checker](#).

Hex FF9767 Background



This preview shows how black text looks on a background with the Hex color FF9767.

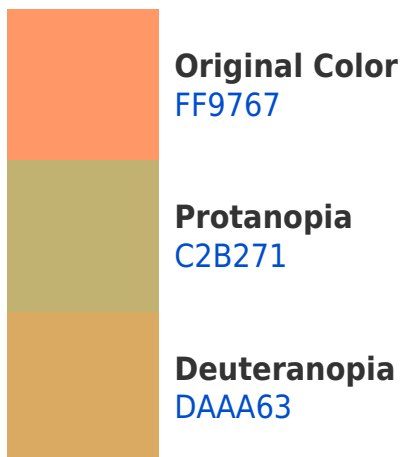


This preview shows how white text looks on a background with the Hex color FF9767.

Color Blindness Simulation

Color vision deficiency is a very complex topic, and I could not describe the different causes any better than Wikipedia does, so if you want to learn more, you should check out their [article about color blindness](#).

Dichromacy



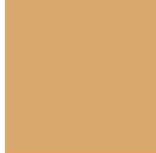


Tritanopia
FF929C

Trichromacy



Original Color
FF9767



Protanomaly
D8A86D



Deuteranomaly
E7A364

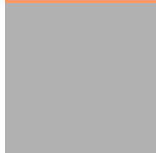


Tritanomaly
FF9489

Monochromacy



Original Color
FF9767



Achromatopsia
B1B1B1



Achromatomaly
CDA896

CSS Examples

Text

The CSS property to change the color of the text to Hex FF9767 is called "color". The color property can be set on classes, ids or directly on the HTML element.

This example shows how text in the color #FF9767 looks like.

```
.text, #text, p{  
    color:#FF9767  
}
```

If you want to add a text shadow in that color use the text-shadow property, you can generate a text shadow directly with our [CSS Text Shadow Generator](#).

Here you see how black text with a 4 pixel #FF9767 colored shadow looks like.

```
.shadow{ text-shadow: 4px 4px 2px #FF9767  
}
```

Border

The CSS property to change the border of an element to Hex FF9767 is called "border". The border property can be set on classes, ids or directly on the HTML element.

This example shows the color as border, it can be applied via the CSS property "border" or "border-color".

```
.border, #border, table{ border:4px solid  
#FF9767 }
```

If only the border color should be changed use the property `border-color`.

```
.border{ border-color:#FF9767 }
```

If you want to add a box shadow in that color use:

Here you see how a box with a 4 pixel #FF9767 colored shadow looks like.

```
.boxshadow{ -moz-box-shadow:4px 4px 4px  
4px #FF9767; -webkit-box-shadow:4px 4px  
4px 4px #FF9767; box-shadow:4px 4px 4px  
4px #FF9767 }
```

Background

The CSS property to change the background color of an element to Hex FF9767 is called "background". The background property can be set on classes, ids or directly on the HTML element.

```
.background, #background, body{  
background:#FF9767 }
```

If only the background color should be changed can be used:

```
.background{ background-color:#FF9767 }
```

This example shows the color as background, it is applied via the CSS property "background".

To optimize and compress your CSS code, you can use our [online CSS compressor and optimizer](#) based on csstidy. If you want to create a linear or radial gradient as background or border, check our [CSS Gradient Generator](#).

Hey! You found this booklet interesting? Support Converting Colors with the new Membership Option!

The pro membership hides all ads, plus gives you double the colors in the color bucket, and more awesome pro features!

[Learn more, Memberships starting at \\$2.50/m!](#)

**Follow me
on Twitter!**

@ConvertingColor