

Converting Colors

Hex(FF9949)

Have a look what the booklet for
Hex(FF9949) contains.

Hex(FF9949)	3
<i>Conversions</i>	4
<i>Details</i>	6
<i>Harmonies</i>	11
<i>Previews</i>	23
<i>Color Blindness Simulation</i>	26
<i>CSS Examples</i>	29

Color

Hex(F9949)

Conversions

Conversions Part 1

Format	Color
Hex	FF9949
RGB	255, 153, 73
RGB Percent	100%, 60%, 29%
CMY	0.0000, 0.4000, 0.7137
CMYK	0.00, 0.40, 0.71, 0.00
HSL	26°, 100%, 64%
HSV	26°, 71%, 100%
XYZ	53.8338, 44.5235, 12.0599
YIQ	174.3780, 86.4720, -3.2560

Conversions

Conversions Part 2

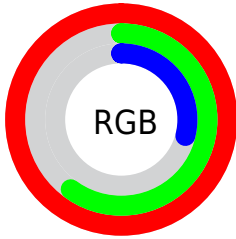
Format	Color
R _Y B	255, 216, 73
Decimal	16750921
CIE Lab	72.58, 31.89, 56.67
CIE LCh	73, 65.029, 60.630
Yxy	44.5235, 0.4875, 0.4032
Android (android.graphics.Color)	4294941001 (0xFFFF9949)
YUV	174.3780, -49.9794, 70.7055
Hunter-Lab	66.7259, 27.2417, 35.9922

Details

The Hex color **FF9949** is a light color, and the websafe version is hex **FF9933**. The color can be described as light washed orange. A complement of this color would be **49AFFF**, and the grayscale version is **AFAFAF**.

A 20% lighter version of the original color is **FFD07D**, and **C16513** is the 20% darker color. If you saturate the color by 10%, you get **FF8B30**, and if you desaturate by 10%, it is **FFA762**.

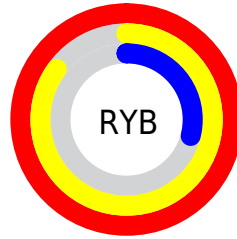
Distribution



Red (100%)

Green (60%)

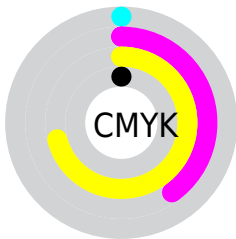
Blue (29%)



Red (100%)

Yellow (85%)

Blue (29%)

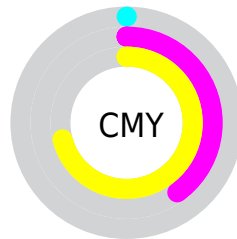


Cyan (0%)

Magenta (40%)

Yellow (71%)

Black (0%)



Cyan (0%)

Magenta (40%)

Yellow (71%)

Brightness & Saturation Gradients

These gradients show how the Hex color FF9949 changes by changing the brightness by 10 percent. The first figure shows a shift by +10% for each color and the second figure -10%.

Similar to the brightness gradients but the following saturation gradients show a change of the Hex color FF9949 by changing the saturation by 10% instead.

 FF9949

 FF9949

FFFFFF

 E07F2F

 FFD07D

 C16513

 FFEC98

 A24C00

 FFFFB4

 853400

 FFFF00

 671C00

 FFFF00

 4A0200

 310000

 000000

 FF9949

 FF9949

 FF8B30

 FFA762

 FF7C16

 FFB67C

 FF7000

 FFC495

 FFD2AF

 FFE0C9

 FFEFE2

 FFFDFB

FFFFFF

Harmonies

Analogous

The Analogous color harmony consists of three colors that are next to each other on the color wheel.



FF8379



FF9949



D0AF30

Triad

The Triadic color harmony groups three colors that are evenly spaced from another and form a triangle on the color wheel.



FF9949



00CFB1



B4A2FF

Complementary

The Complementary color scheme is a pair of colors which are on the opposite of each other on the color wheel.



FF9949



49AFFF

Split Complementary

Split-complementary colors differ from the complementary color scheme. The scheme consists of three colors, the original color and two neighbors of the complement color.



00B8FF



FF9949



00CEED

Square

The Square scheme is like the rectangle color scheme, but the four colors are evenly spaced on the color wheel.



FF9949



3ACA75



00C7FF



FB89ED

Rectangle

The Rectangle color scheme consists of four colors that form a rectangle on the color wheel.



FF9949



AABB39



00C7FF



92AAFF

Sweetspot

The Sweet Spot groups the original color and five complimentary colors.



FF9949



FFE1C9



FF49B0



806E60



000000



808080

Same Dimension

The Same Dimension uses a secret algorithm to generate beautiful new colors.



FF9949



FF8424



FFF349



807873



BF5400



401C00

Inverse Universe

The Inverse Universe completely reimagines the original color for something new.



49AFFF



249FFF



4955FF



737A80



006BBF



002440

Previews

White Background



This preview shows how the Hex color FF9949 looks on a white background.

Color Contrast Check

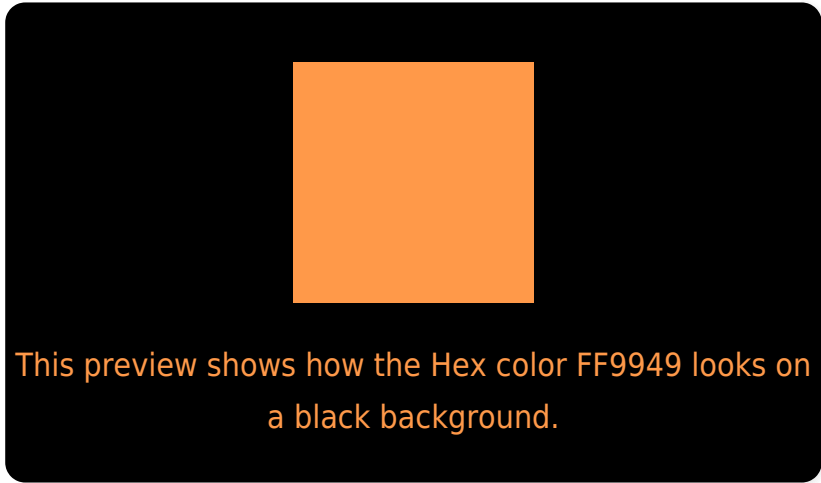
Large Text (above 18pt) WCAG AA × Fail

Any Text WCAG AA × Fail

Large Text (above 18pt) WCAG AAA × Fail

Any Text WCAG AAA × Fail

Black Background



Color Contrast Check

Large Text (above 18pt) WCAG AA ✓ Pass

Any Text WCAG AA ✓ Pass

Large Text (above 18pt) WCAG AAA ✓ Pass

Any Text WCAG AAA ✓ Pass

If you want to check with other color combinations, try the [Color Contrast Checker](#).

Hex FF9949 Background



This preview shows how black text looks on a background with the Hex color FF9949.



This preview shows how white text looks on a background with the Hex color FF9949.

Color Blindness Simulation

Color vision deficiency is a very complex topic, and I could not describe the different causes any better than Wikipedia does, so if you want to learn more, you should check out their [article about color blindness](#).

Dichromacy



Original Color
FF9949

Protanopia
C6B351

Deuteranopia
DEAA44



Tritanopia
FF939C

Trichromacy



Original Color
FF9949



Protanomaly
DBAA4E



Deuteranomaly
EAA446

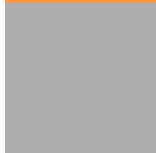


Tritanomaly
FF957E

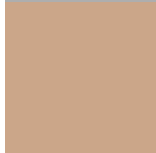
Monochromacy



Original Color
FF9949



Achromatopsia
AEAEAE



Achromatomaly
CBA689

CSS Examples

Text

The CSS property to change the color of the text to Hex FF9949 is called "color". The color property can be set on classes, ids or directly on the HTML element.

This example shows how text in the color #FF9949 looks like.

```
.text, #text, p{  
    color:#FF9949  
}
```

If you want to add a text shadow in that color use the text-shadow property, you can generate a text shadow directly with our [CSS Text Shadow Generator](#).

Here you see how black text with a 4 pixel #FF9949 colored shadow looks like.

```
.shadow{ text-shadow: 4px 4px 2px #FF9949
}
```

Border

The CSS property to change the border of an element to Hex FF9949 is called "border". The border property can be set on classes, ids or directly on the HTML element.

This example shows the color as border, it can be applied via the CSS property "border" or "border-color".

```
.border, #border, table{ border:4px solid
#FF9949 }
```

If only the border color should be changed use the property `border-color`.

```
.border{ border-color:#FF9949 }
```

If you want to add a box shadow in that color use:

Here you see how a box with a 4 pixel #FF9949 colored shadow looks like.

```
.boxshadow{ -moz-box-shadow:4px 4px 4px  
4px #FF9949; -webkit-box-shadow:4px 4px  
4px 4px #FF9949; box-shadow:4px 4px 4px  
4px #FF9949 }
```

Background

The CSS property to change the background color of an element to Hex FF9949 is called "background". The background property can be set on classes, ids or directly on the HTML element.

```
.background, #background, body{  
background:#FF9949 }
```

If only the background color should be changed can be used:

```
.background{ background-color:#FF9949 }
```

This example shows the color as background, it is applied via the CSS property "background".

To optimize and compress your CSS code, you can use our [online CSS compressor and optimizer](#) based on csstidy. If you want to create a linear or radial gradient as background or border, check our [CSS Gradient Generator](#).

Hey! You found this booklet interesting? Support Converting Colors with the new Membership Option!

The pro membership hides all ads, plus gives you double the colors in the color bucket, and more awesome pro features!

[Learn more, Memberships starting at \\$2.50/m!](#)

**Follow me
on Twitter!**

@ConvertingColor