

Converting Colors

Hex(FF9B97)

Have a look what the booklet for
Hex(FF9B97) contains.

Hex(FF9B97)	3
<i>Conversions</i>	4
<i>Details</i>	6
<i>Harmonies</i>	11
<i>Previews</i>	23
<i>Color Blindness Simulation</i>	26
<i>CSS Examples</i>	29

Color

Hex(F99B97)

Conversions

Conversions Part 1

Format	Color
Hex	FF9B97
RGB	255, 155, 151
RGB Percent	100%, 61%, 59%
CMY	0.0000, 0.3922, 0.4078
CMYK	0.00, 0.39, 0.41, 0.00
HSL	2°, 100%, 80%
HSV	2°, 41%, 100%
XYZ	58.5473, 46.9371, 35.2521
YIQ	184.4440, 60.8840, 19.9560

Conversions

Conversions Part 2

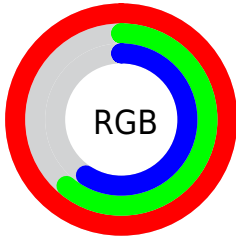
Format	Color
RYB	255, 155, 151
Decimal	16751511
CIELab	74.15, 36.85, 18.10
CIELCh	74, 41.057, 26.155
Yxy	46.9371, 0.4160, 0.3335
Android (android.graphics.Color)	4294941591 (0xFFFF9B97)
YUV	184.4440, -16.4879, 61.8776
Hunter-Lab	68.5106, 32.6475, 17.4498

Details

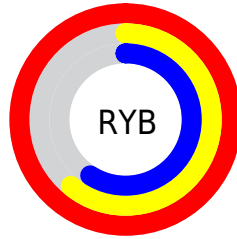
The Hex color **FF9B97** is a light color, and the websafe version is hex **FF9999**. A complement of this color would be **97FBFF**, and the grayscale version is **B9B9B9**.

A 20% lighter version of the original color is **FFD3CD**, and **C36664** is the 20% darker color. If you saturate the color by 10%, you get **FF827E**, and if you desaturate by 10%, it is **FFB4B1**.

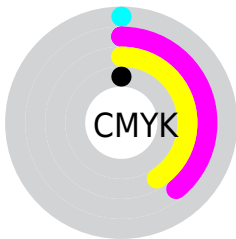
Distribution



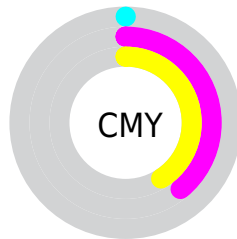
- Red (100%)
- Green (61%)
- Blue (59%)



- Red (100%)
- Yellow (61%)
- Blue (59%)



- Cyan (0%)
- Magenta (39%)
- Yellow (41%)
- Black (0%)



- Cyan (0%)
- Magenta (39%)
- Yellow (41%)

Brightness & Saturation Gradients


These gradients show how the Hex color FF9B97 changes by changing the brightness by 10 percent. The first figure shows a shift by +10% for each color and the second figure -10%.

Similar to the brightness gradients but the following saturation gradients show a change of the Hex color FF9B97 by changing the saturation by 10% instead.

 FF9B97

 FF9B97

FFFFFF

 E1807D

 FFD3CD

 C36664

 FFEFE9

 A64D4C

 8A3436

 6E1A20

 52000A

 380000

 180001

 000000

 FF9B97

 FF9B97

 FF827E

 FFB4B1

 FF6A64

 FFCCCA

 FF514B

 FFE5E4

 FF3931

 FFFDFD

 FF2018

 FFFFFFFF

 FF0A00

Harmonies

Analogous

The Analogous color harmony consists of three colors that are next to each other on the color wheel.



FB99BD



FF9B97



F0A579

Triad

The Triadic color harmony groups three colors that are evenly spaced from another and form a triangle on the color wheel.



FF9B97



81C68B



76BCFF

Complementary

The Complementary color scheme is a pair of colors which are on the opposite of each other on the color wheel.



FF9B97



97FBFF

Split Complementary

Split-complementary colors differ from the complementary color scheme. The scheme consists of three colors, the original color and two neighbors of the complement color.



28C5F4



FF9B97



4CCAB0

Square

The Square scheme is like the rectangle color scheme, but the four colors are evenly spaced on the color wheel.



FF9B97



ADBE71



00CAD6



B3AEFA

Rectangle

The Rectangle color scheme consists of four colors that form a rectangle on the color wheel.



FF9B97



DEAE6D



00CAD6



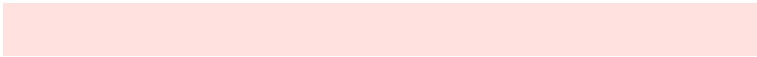
5EBFFF

Sweetspot

The Sweet Spot groups the original color and five complimentary colors.



FF9B97



FFE2E0



FF97FC



806E6E



000000



808080

Same Dimension

The Same Dimension uses a secret algorithm to generate beautiful new colors.



FF9B97



FF8782



FFCE97



807373



BF0700



400200

Inverse Universe

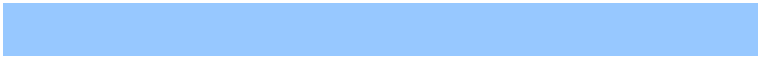
The Inverse Universe completely reimagines the original color for something new.



97FBFF



82FAFF



97C8FF



737F80



00B8BF



003D40

Previews

White Background



This preview shows how the Hex color FF9B97 looks on a white background.

Color Contrast Check

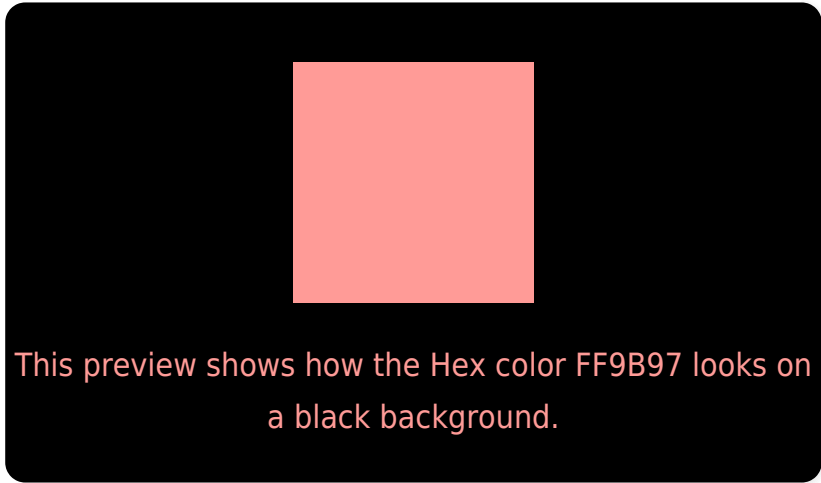
Large Text (above 18pt) WCAG AA × Fail

Any Text WCAG AA × Fail

Large Text (above 18pt) WCAG AAA × Fail

Any Text WCAG AAA × Fail

Black Background



Color Contrast Check

Large Text (above 18pt) WCAG AA ✓ Pass

Any Text WCAG AA ✓ Pass

Large Text (above 18pt) WCAG AAA ✓ Pass

Any Text WCAG AAA ✓ Pass

If you want to check with other color combinations, try the [Color Contrast Checker](#).

Hex FF9B97 Background



This preview shows how black text looks on a background with the Hex color FF9B97.

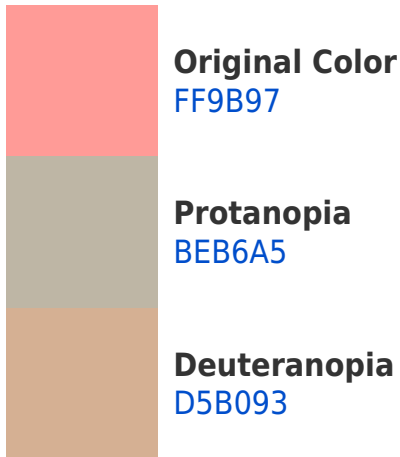


This preview shows how white text looks on a background with the Hex color FF9B97.

Color Blindness Simulation

Color vision deficiency is a very complex topic, and I could not describe the different causes any better than Wikipedia does, so if you want to learn more, you should check out their [article about color blindness](#).

Dichromacy



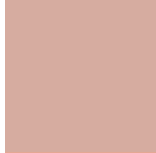


Tritanopia
FF9AA5

Trichromacy



Original Color
FF9B97



Protanomaly
D6ACA0



Deuteranomaly
E4A894



Tritanomaly
FF9AA0

Monochromacy



Original Color
FF9B97



Achromatopsia
B8B8B8



Achromatomaly
D2ADAC

CSS Examples

Text

The CSS property to change the color of the text to Hex FF9B97 is called "color". The color property can be set on classes, ids or directly on the HTML element.

This example shows how text in the color #FF9B97 looks like.

```
.text, #text, p{  
    color:#FF9B97  
}
```

If you want to add a text shadow in that color use the text-shadow property, you can generate a text shadow directly with our [CSS Text Shadow Generator](#).

Here you see how black text with a 4 pixel #FF9B97 colored shadow looks like.

```
.shadow{ text-shadow: 4px 4px 2px #FF9B97  
}
```

Border

The CSS property to change the border of an element to Hex FF9B97 is called "border". The border property can be set on classes, ids or directly on the HTML element.

This example shows the color as border, it can be applied via the CSS property "border" or "border-color".

```
.border, #border, table{ border:4px solid  
#FF9B97 }
```

If only the border color should be changed use the property `border-color`.

```
.border{ border-color:#FF9B97 }
```

If you want to add a box shadow in that color use:

Here you see how a box with a 4 pixel #FF9B97 colored shadow looks like.

```
.boxshadow{ -moz-box-shadow:4px 4px 4px  
4px #FF9B97; -webkit-box-shadow:4px 4px  
4px 4px #FF9B97; box-shadow:4px 4px 4px  
4px #FF9B97 }
```

Background

The CSS property to change the background color of an element to Hex FF9B97 is called "background". The background property can be set on classes, ids or directly on the HTML element.

```
.background, #background, body{  
background:#FF9B97 }
```

If only the background color should be changed can be used:

```
.background{ background-color:#FF9B97 }
```

This example shows the color as background, it is applied via the CSS property "background".

To optimize and compress your CSS code, you can use our [online CSS compressor and optimizer](#) based on csstidy. If you want to create a linear or radial gradient as background or border, check our [CSS Gradient Generator](#).

Hey! You found this booklet interesting? Support Converting Colors with the new Membership Option!

The pro membership hides all ads, plus gives you double the colors in the color bucket, and more awesome pro features!

[Learn more, Memberships starting at \\$2.50/m!](#)

**Follow me
on Twitter!**

@ConvertingColor