

Converting Colors

Hex(FFA0A4)

Have a look what the booklet for
Hex(FFA0A4) contains.

Hex(FFA0A4)	3
<i>Conversions</i>	4
<i>Details</i>	6
<i>Harmonies</i>	11
<i>Previews</i>	23
<i>Color Blindness Simulation</i>	26
<i>CSS Examples</i>	29

Color

Hex(FFA0A4)

Conversions

Conversions Part 1

Format	Color
Hex	FFA0A4
RGB	255, 160, 164
RGB Percent	100%, 63%, 64%
CMY	0.0000, 0.3725, 0.3569
CMYK	0.00, 0.37, 0.36, 0.00
HSL	357°, 100%, 81%
HSV	357°, 37%, 100%
XYZ	60.5116, 49.0819, 41.4064
YIQ	188.8610, 55.3360, 21.3840

Conversions

Conversions Part 2

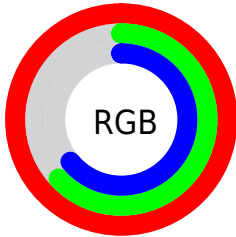
Format	Color
R _Y B	255, 160, 164
Decimal	16752804
CIE Lab	75.50, 35.73, 12.86
CIE LCh	76, 37.973, 19.801
Yxy	49.0819, 0.4007, 0.3250
Android (android.graphics.Color)	4294942884 (0xFFFFA0A4)
YUV	188.8610, -12.2565, 58.0039
Hunter-Lab	70.0585, 31.5734, 13.9990

Details

The Hex color **FFA0A4** is a light color, and the websafe version is hex **FF9999**. A complement of this color would be **A0FFFB**, and the grayscale version is **BDBDBD**.

A 20% lighter version of the original color is **FFD8DB**, and **C46B70** is the 20% darker color. If you saturate the color by 10%, you get **FF868C**, and if you desaturate by 10%, it is **FFBABC**.

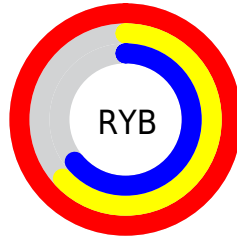
Distribution



Red (100%)

Green (63%)

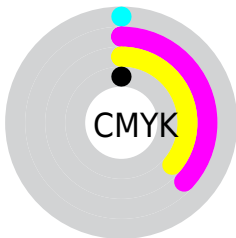
Blue (64%)



Red (100%)

Yellow (63%)

Blue (64%)

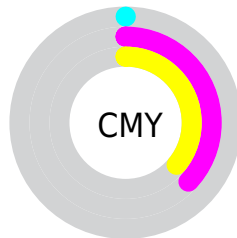


Cyan (0%)

Magenta (37%)

Yellow (36%)

Black (0%)



Cyan (0%)

Magenta (37%)

Yellow (36%)

Brightness & Saturation Gradients


These gradients show how the Hex color FFA0A4 changes by changing the brightness by 10 percent. The first figure shows a shift by +10% for each color and the second figure -10%.

Similar to the brightness gradients but the following saturation gradients show a change of the Hex color FFA0A4 by changing the saturation by 10% instead.

 FFA0A4

 FFA0A4

FFFFFF

 E1858A

 FFD8DB

 C46B70

 FFF4F7

 A75258

 8B3941

 6F202B

 540317

 3A0000

 1E0001

 000000

 FFA0A4

 FFA0A4

 FF868C

 FFBABC

 FF6D73

 FFD3D5

 FF545B

 FFEDED

 FF3A42

FFFFFF

 FF212A

 FF0711

 FF000B

Harmonies

Analogous

The Analogous color harmony consists of three colors that are next to each other on the color wheel.



F7A0C7



FFA0A4



F5A886

Triad

The Triadic color harmony groups three colors that are evenly spaced from another and form a triangle on the color wheel.



FFA0A4



92C88C



75C1FE

Complementary

The Complementary color scheme is a pair of colors which are on the opposite of each other on the color wheel.



FFA0A4



A0FFFB

Split Complementary

Split-complementary colors differ from the complementary color scheme. The scheme consists of three colors, the original color and two neighbors of the complement color.



40C9EE



FFA0A4



66CCAC

Square

The Square scheme is like the rectangle color scheme, but the four colors are evenly spaced on the color wheel.



FFA0A4



BABF77



3CCDD0



ADB5FC

Rectangle

The Rectangle color scheme consists of four colors that form a rectangle on the color wheel.



FFA0A4



E6B079



3CCDD0



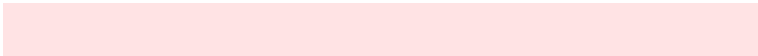
61C4FB

Sweetspot

The Sweet Spot groups the original color and five complimentary colors.



FFA0A4



FFE3E4



FAA0FF



806F70



000000



808080

Same Dimension

The Same Dimension uses a secret algorithm to generate beautiful new colors.



FFA0A4



FF8C91



FFCBA0



807373



BF0008



400003

Inverse Universe

The Inverse Universe completely reimagines the original color for something new.



FFA0A4



FF8C91



A0D4FF



807373



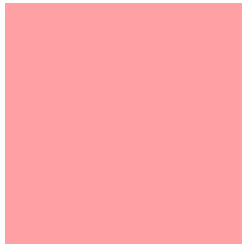
BF0008



400003

Previews

White Background



This preview shows how the Hex color FFA0A4 looks on a white background.

Color Contrast Check

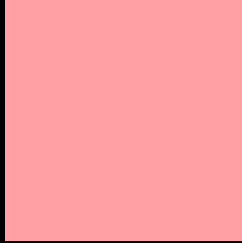
Large Text (above 18pt) WCAG AA × Fail

Any Text WCAG AA × Fail

Large Text (above 18pt) WCAG AAA × Fail

Any Text WCAG AAA × Fail

Black Background



This preview shows how the Hex color FFA0A4 looks on a black background.

Color Contrast Check

Large Text (above 18pt) WCAG AA ✓ Pass

Any Text WCAG AA ✓ Pass

Large Text (above 18pt) WCAG AAA ✓ Pass

Any Text WCAG AAA ✓ Pass

If you want to check with other color combinations, try the [Color Contrast Checker](#).

Hex FFA0A4 Background



This preview shows how black text looks on a background with the Hex color FFA0A4.

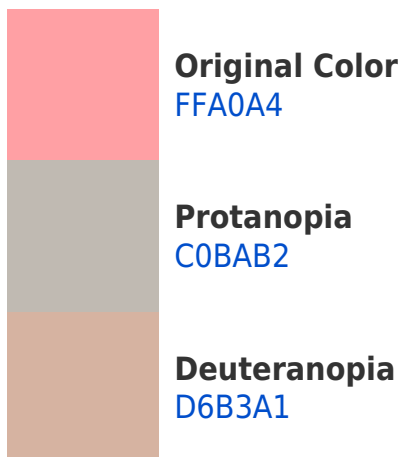


This preview shows how white text looks on a background with the Hex color FFA0A4.

Color Blindness Simulation

Color vision deficiency is a very complex topic, and I could not describe the different causes any better than Wikipedia does, so if you want to learn more, you should check out their [article about color blindness](#).

Dichromacy



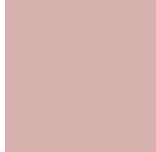


Tritanopia
FF9FAB

Trichromacy



Original Color
FFA0A4



Protanomaly
D7B1AD



Deuteranomaly
E5ACA2



Tritanomaly
FF9FA8

Monochromacy



Original Color
FFA0A4



Achromatopsia
BDBDBD



Achromatomaly
D5B2B4

CSS Examples

Text

The CSS property to change the color of the text to Hex FFA0A4 is called "color". The color property can be set on classes, ids or directly on the HTML element.

This example shows how text in the color #FFA0A4 looks like.

```
.text, #text, p{  
    color:#FFA0A4  
}
```

If you want to add a text shadow in that color use the text-shadow property, you can generate a text shadow directly with our [CSS Text Shadow Generator](#).

Here you see how black text with a 4 pixel #FFA0A4 colored shadow looks like.

```
.shadow{ text-shadow: 4px 4px 2px #FFA0A4
}
```

Border

The CSS property to change the border of an element to Hex FFA0A4 is called "border". The border property can be set on classes, ids or directly on the HTML element.

This example shows the color as border, it can be applied via the CSS property "border" or "border-color".

```
.border, #border, table{ border:4px solid
#FFA0A4 }
```

If only the border color should be changed use the property `border-color`.

```
.border{ border-color:#FFA0A4 }
```

If you want to add a box shadow in that color use:

Here you see how a box with a 4 pixel #FFA0A4 colored shadow looks like.

```
.boxshadow{ -moz-box-shadow:4px 4px 4px  
4px #FFA0A4; -webkit-box-shadow:4px 4px  
4px 4px #FFA0A4; box-shadow:4px 4px 4px  
4px #FFA0A4 }
```

Background

The CSS property to change the background color of an element to Hex FFA0A4 is called "background". The background property can be set on classes, ids or directly on the HTML element.

```
.background, #background, body{  
background:#FFA0A4 }
```

If only the background color should be changed can be used:

```
.background{ background-color:#FFA0A4 }
```

This example shows the color as background, it is applied via the CSS property "background".

To optimize and compress your CSS code, you can use our [online CSS compressor and optimizer](#) based on csstidy. If you want to create a linear or radial gradient as background or border, check our [CSS Gradient Generator](#).

Hey! You found this booklet interesting? Support Converting Colors with the new Membership Option!

The pro membership hides all ads, plus gives you double the colors in the color bucket, and more awesome pro features!

[Learn more, Memberships starting at \\$2.50/m!](#)

**Follow me
on Twitter!**

@ConvertingColor