

# Converting Colors

Hex(FFA2A3)

Have a look what the booklet for  
Hex(FFA2A3) contains.

<b>Hex(FFA2A3)</b> .....	3
<i><b>Conversions</b></i> .....	4
<i><b>Details</b></i> .....	6
<i><b>Harmonies</b></i> .....	11
<i><b>Previews</b></i> .....	23
<i><b>Color Blindness Simulation</b></i> .....	26
<i><b>CSS Examples</b></i> .....	29

# **Color**

**Hex(FFA2A3)**

# Conversions

## Conversions Part 1

Format	Color
Hex	FFA2A3
RGB	255, 162, 163
RGB Percent	100%, 64%, 64%
CMY	0.0000, 0.3647, 0.3608
CMYK	0.00, 0.36, 0.36, 0.00
HSL	359°, 100%, 82%
HSV	359°, 36%, 100%
XYZ	60.7712, 49.7450, 41.0491
YIQ	189.9210, 55.1070, 20.0270

# Conversions

## Conversions Part 2

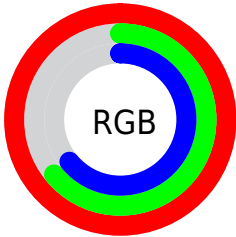
<b>Format</b>	<b>Color</b>
R <sub>Y</sub> B	255, 162, 163
Decimal	16753315
CIE <sub>Lab</sub>	75.91, 34.57, 13.99
CIE <sub>LCh</sub>	76, 37.296, 22.029
Yxy	49.7450, 0.4010, 0.3282
Android (android.graphics.Color)	4294943395 (0xFFFFA2A3)
YUV	189.9210, -13.2721, 57.0743
Hunter-Lab	70.5301, 30.3740, 14.8639

# Details

The Hex color **FFA2A3** is a light color, and the websafe version is hex **FF9999**. A complement of this color would be **A2FFFE**, and the grayscale version is **BEBEBE**.

A 20% lighter version of the original color is **FFDADA**, and **C46D6F** is the 20% darker color. If you saturate the color by 10%, you get **FF888A**, and if you desaturate by 10%, it is **FFBBBC**.

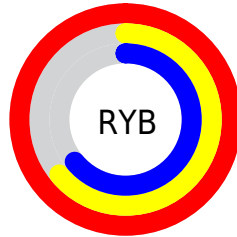
# Distribution



Red (100%)

Green (64%)

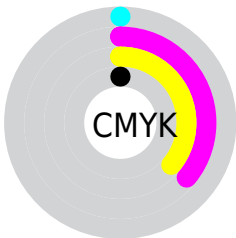
Blue (64%)



Red (100%)

Yellow (64%)

Blue (64%)

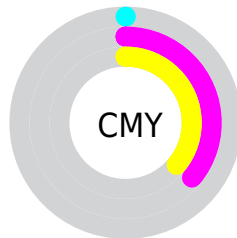


Cyan (0%)

Magenta (36%)

Yellow (36%)

Black (0%)



Cyan (0%)

Magenta (36%)

Yellow (36%)

# Brightness & Saturation Gradients

These gradients show how the Hex color FFA2A3 changes by changing the brightness by 10 percent. The first figure shows a shift by +10% for each color and the second figure -10%.

Similar to the brightness gradients but the following saturation gradients show a change of the Hex color FFA2A3 by changing the saturation by 10% instead.



 FFA2A3

 FFA2A3

FFFFFF

 E18789

 FFDADA

 C46D6F

 FFF7F6

 A75457

 8B3B40

 6F222A

 540616

 3A0000

 1F0001

 000000

 FFA2A3

 FFA2A3

 FF888A

 FFBBBC

 FF6F71

 FFD5D5

 FF5657

 FFEFEF

 FF3C3E

FFFFFF

 FF2225

 FF090C

 FF0003

# Harmonies

## Analogous

The Analogous color harmony consists of three colors that are next to each other on the color wheel.



F8A2C6



FFA2A3



F4AA86

# Triad

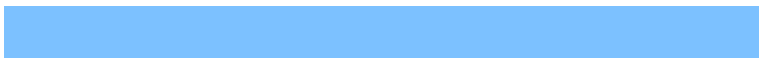
The Triadic color harmony groups three colors that are evenly spaced from another and form a triangle on the color wheel.



FFA2A3



91C990



7CC1FF

# Complementary

The Complementary color scheme is a pair of colors which are on the opposite of each other on the color wheel.



FFA2A3



A2FFFE

# Split Complementary

Split-complementary colors differ from the complementary color scheme. The scheme consists of three colors, the original color and two neighbors of the complement color.



49CAF0



FFA2A3



66CDB0

# Square

The Square scheme is like the rectangle color scheme, but the four colors are evenly spaced on the color wheel.



FFA2A3



B8C17A



41CDD4



B2B6FB

# Rectangle

The Rectangle color scheme consists of four colors that form a rectangle on the color wheel.



FFA2A3



E4B27A



41CDD4



6AC4FC



# Sweetspot

The Sweet Spot groups the original color and five complimentary colors.



FFA2A3



FFE3E3



FDA2FF



806F6F



000000



808080



# Same Dimension

The Same Dimension uses a secret algorithm to generate beautiful new colors.



FFA2A3



FF8F90



FFCFA2



807373



BF0002



400001



# Inverse Universe

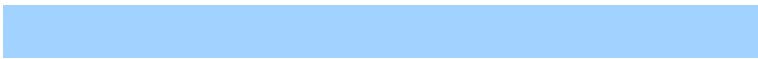
The Inverse Universe completely reimagines the original color for something new.



FFA2A3



FF8F90



A2D2FF



807373



BF0002

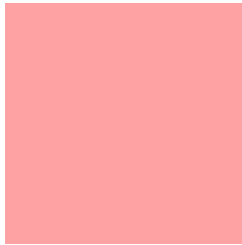


400001



# Previews

## White Background



This preview shows how the Hex color FFA2A3 looks on a white background.

## Color Contrast Check

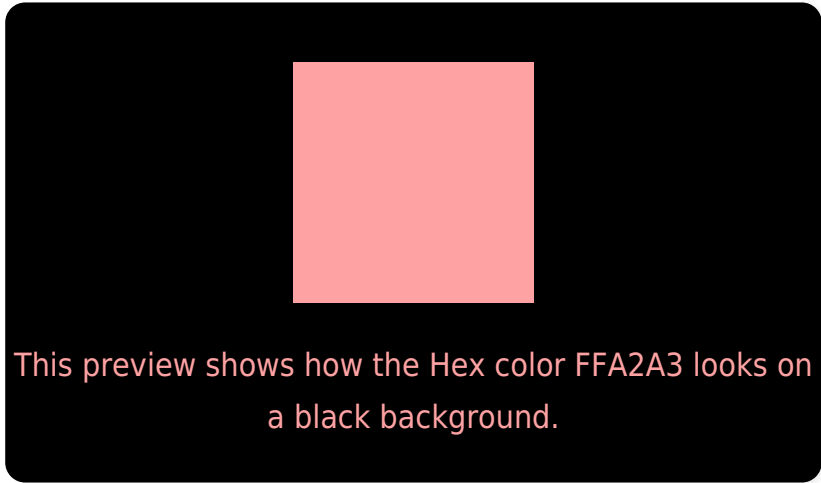
Large Text (above 18pt) WCAG AA × Fail

Any Text WCAG AA × Fail

Large Text (above 18pt) WCAG AAA × Fail

Any Text WCAG AAA × Fail

# Black Background



## Color Contrast Check

Large Text (above 18pt) WCAG AA ✓ Pass

Any Text WCAG AA ✓ Pass

Large Text (above 18pt) WCAG AAA ✓ Pass

Any Text WCAG AAA ✓ Pass

If you want to check with other color combinations, try the [Color Contrast Checker](#).



## Hex FFA2A3 Background



This preview shows how black text looks on a background with the Hex color FFA2A3.

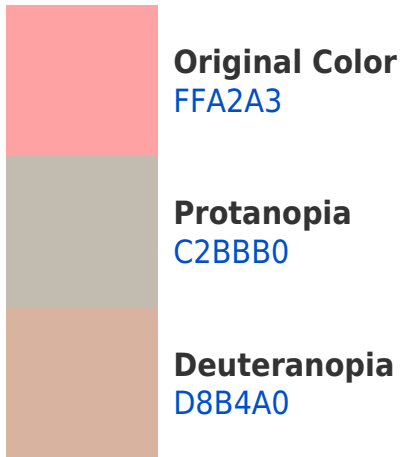


This preview shows how white text looks on a background with the Hex color FFA2A3.

# Color Blindness Simulation

Color vision deficiency is a very complex topic, and I could not describe the different causes any better than Wikipedia does, so if you want to learn more, you should check out their [article about color blindness](#).

## Dichromacy



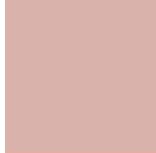


**Tritanopia**  
FFA1AD

# Trichromacy



**Original Color**  
FFA2A3



**Protanomaly**  
D8B2AB



**Deuteranomaly**  
E6ADA1



**Tritanomaly**  
FFA1A9

# Monochromacy



**Original Color**  
FFA2A3



**Achromatopsia**  
BEBEBE



**Achromatomaly**  
D6B4B4

# CSS Examples

## Text

The CSS property to change the color of the text to Hex FFA2A3 is called "color". The color property can be set on classes, ids or directly on the HTML element.

This example shows how text in the color #FFA2A3 looks like.

```
.text, #text, p{  
    color:#FFA2A3  
}
```

If you want to add a text shadow in that color use the text-shadow property, you can generate a text shadow directly with our [CSS Text Shadow Generator](#).

Here you see how black text with a 4 pixel #FFA2A3 colored shadow looks like.

```
.shadow{ text-shadow: 4px 4px 2px #FFA2A3
}
```

## Border

The CSS property to change the border of an element to Hex FFA2A3 is called "border". The border property can be set on classes, ids or directly on the HTML element.

This example shows the color as border, it can be applied via the CSS property "border" or "border-color".

```
.border, #border, table{ border:4px solid
#FFA2A3 }
```

If only the border color should be changed use the property `border-color`.

```
.border{ border-color:#FFA2A3 }
```

If you want to add a box shadow in that color use:

Here you see how a box with a 4 pixel #FFA2A3 colored shadow looks like.

```
.boxshadow{ -moz-box-shadow:4px 4px 4px  
4px #FFA2A3; -webkit-box-shadow:4px 4px  
4px 4px #FFA2A3; box-shadow:4px 4px 4px  
4px #FFA2A3 }
```

# Background

The CSS property to change the background color of an element to Hex FFA2A3 is called "background". The background property can be set on classes, ids or directly on the HTML element.

```
.background, #background, body{  
background:#FFA2A3 }
```

If only the background color should be changed can be used:

```
.background{ background-color:#FFA2A3 }
```

This example shows the color as background, it is applied via the CSS property "background".

To optimize and compress your CSS code, you can use our [online CSS compressor and optimizer](#) based on csstidy. If you want to create a linear or radial gradient as background or border, check our [CSS Gradient Generator](#).



Hey! You found this booklet interesting? Support Converting Colors with the new Membership Option!

The pro membership hides all ads, plus gives you double the colors in the color bucket, and more awesome pro features!

**[Learn more, Memberships starting at \\$2.50/m!](#)**

**Follow me  
on Twitter!**

@ConvertingColor