

Converting Colors

Hex(FFA9A4)

Have a look what the booklet for
Hex(FFA9A4) contains.

Hex(FFA9A4)	3
<i>Conversions</i>	4
<i>Details</i>	6
<i>Harmonies</i>	11
<i>Previews</i>	23
<i>Color Blindness Simulation</i>	26
<i>CSS Examples</i>	29

Color

Hex(FFA9A4)

Conversions

Conversions Part 1

Format	Color
Hex	FFA9A4
RGB	255, 169, 164
RGB Percent	100%, 66%, 64%
CMY	0.0000, 0.3373, 0.3569
CMYK	0.00, 0.34, 0.36, 0.00
HSL	3°, 100%, 82%
HSV	3°, 36%, 100%
XYZ	62.1288, 52.3163, 41.9455
YIQ	194.1440, 52.8610, 16.6770

Conversions

Conversions Part 2

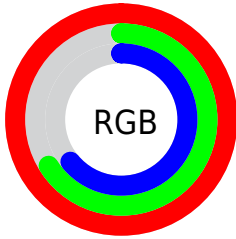
Format	Color
R _Y B	255, 169, 164
Decimal	16755108
CIE Lab	77.47, 31.05, 15.63
CIE LCh	77, 34.758, 26.722
Yxy	52.3163, 0.3973, 0.3345
Android (android.graphics.Color)	4294945188 (0xFFFFA9A4)
YUV	194.1440, -14.8610, 53.3707
Hunter-Lab	72.3300, 26.7475, 16.2477

Details

The Hex color **FFA9A4** is a light color, and the websafe version is hex **FF9999**. A complement of this color would be **A4FAFF**, and the grayscale version is **C2C2C2**.

A 20% lighter version of the original color is **FFE1DB**, and **C47470** is the 20% darker color. If you saturate the color by 10%, you get **FF918B**, and if you desaturate by 10%, it is **FFC1BE**.

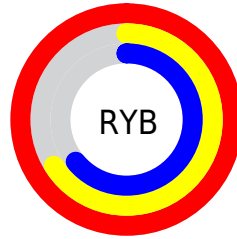
Distribution



Red (100%)

Green (66%)

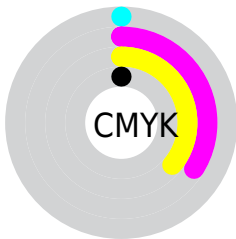
Blue (64%)



Red (100%)

Yellow (66%)

Blue (64%)

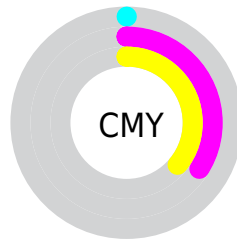


Cyan (0%)

Magenta (34%)

Yellow (36%)

Black (0%)



Cyan (0%)

Magenta (34%)

Yellow (36%)

Brightness & Saturation Gradients

These gradients show how the Hex color FFA9A4 changes by changing the brightness by 10 percent. The first figure shows a shift by +10% for each color and the second figure -10%.

Similar to the brightness gradients but the following saturation gradients show a change of the Hex color FFA9A4 by changing the saturation by 10% instead.

 FFA9A4

 FFA9A4

FFFFFF

 E18E8A

 FFE1DB

 C47470

 FFFE7

 A75B58

 8B4241

 702A2B

 551116

 3B0000

 220001

 000000

 FFA9A4

 FFA9A4

 FF918B

 FFC1BE

 FF7971

 FFD9D7

 FF6158

 FFF1F1

 FF493E

FFFFFF

 FF3124

 FF180B

 FF0E00

Harmonies

Analogous

The Analogous color harmony consists of three colors that are next to each other on the color wheel.



FBA7C4



FFA9A4



F2B18B

Triad

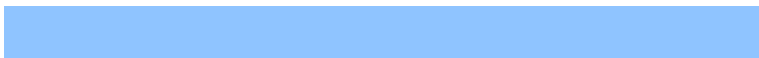
The Triadic color harmony groups three colors that are evenly spaced from another and form a triangle on the color wheel.



FFA9A4



92CD9B



8FC4FF

Complementary

The Complementary color scheme is a pair of colors which are on the opposite of each other on the color wheel.



FFA9A4



A4FAFF

Split Complementary

Split-complementary colors differ from the complementary color scheme. The scheme consists of three colors, the original color and two neighbors of the complement color.



62CCF4



FFA9A4



6DD1BB

Square

The Square scheme is like the rectangle color scheme, but the four colors are evenly spaced on the color wheel.



FFA9A4



B8C685



54D0DB



BFB8F9

Rectangle

The Rectangle color scheme consists of four colors that form a rectangle on the color wheel.



FFA9A4



E3B881



54D0DB



7EC7FD

Sweetspot

The Sweet Spot groups the original color and five complimentary colors.



FFA9A4



FFE4E3



FFA4FA



80706F



000000



808080

Same Dimension

The Same Dimension uses a secret algorithm to generate beautiful new colors.



FFA9A4



FF9791



FFD6A4



807373



BF0B00



400400

Inverse Universe

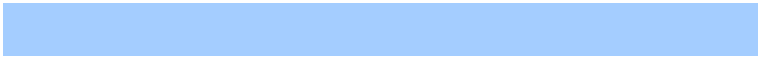
The Inverse Universe completely reimagines the original color for something new.



A4FAFF



91F9FF



A4CDFF



737F80



00B5BF



003C40

Previews

White Background



This preview shows how the Hex color FFA9A4 looks on a white background.

Color Contrast Check

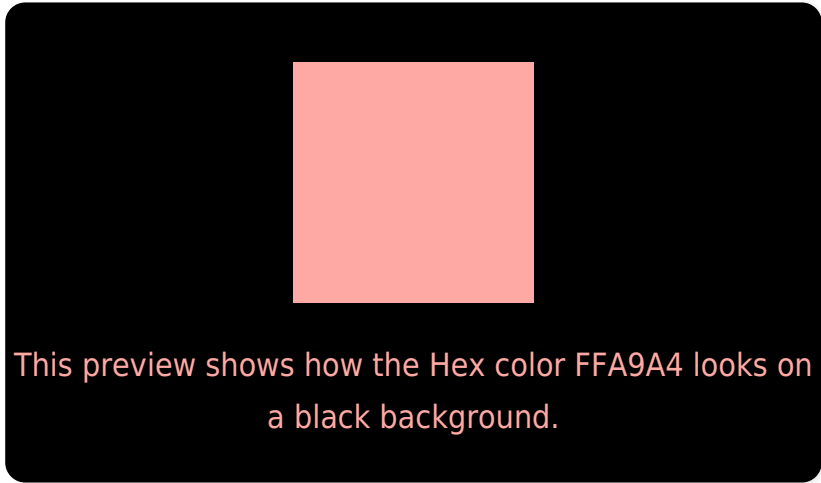
Large Text (above 18pt) WCAG AA × Fail

Any Text WCAG AA × Fail

Large Text (above 18pt) WCAG AAA × Fail

Any Text WCAG AAA × Fail

Black Background



Color Contrast Check

Large Text (above 18pt) WCAG AA ✓ Pass

Any Text WCAG AA ✓ Pass

Large Text (above 18pt) WCAG AAA ✓ Pass

Any Text WCAG AAA ✓ Pass

If you want to check with other color combinations, try the [Color Contrast Checker](#).

Hex FFA9A4 Background



This preview shows how black text looks on a background with the Hex color FFA9A4.

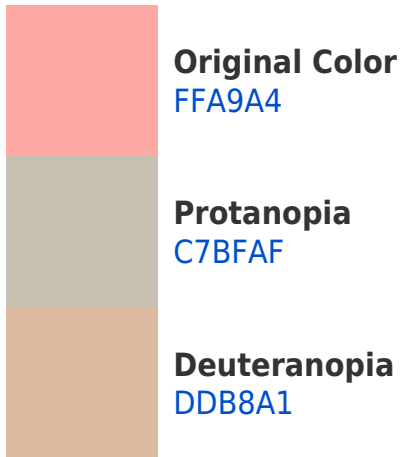


This preview shows how white text looks on a background with the Hex color FFA9A4.

Color Blindness Simulation

Color vision deficiency is a very complex topic, and I could not describe the different causes any better than Wikipedia does, so if you want to learn more, you should check out their [article about color blindness](#).

Dichromacy



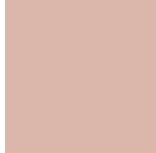


Tritanopia
FFA7B4

Trichromacy



Original Color
FFA9A4



Protanomaly
DBB7AB



Deuteranomaly
E9B3A2

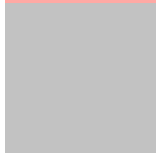


Tritanomaly
FFA8AE

Monochromacy



Original Color
FFA9A4



Achromatopsia
C2C2C2



Achromatomaly
D8B9B7

CSS Examples

Text

The CSS property to change the color of the text to Hex FFA9A4 is called "color". The color property can be set on classes, ids or directly on the HTML element.

This example shows how text in the color #FFA9A4 looks like.

```
.text, #text, p{  
    color:#FFA9A4  
}
```

If you want to add a text shadow in that color use the text-shadow property, you can generate a text shadow directly with our [CSS Text Shadow Generator](#).

Here you see how black text with a 4 pixel #FFA9A4 colored shadow looks like.

```
.shadow{ text-shadow: 4px 4px 2px #FFA9A4
}
```

Border

The CSS property to change the border of an element to Hex FFA9A4 is called "border". The border property can be set on classes, ids or directly on the HTML element.

This example shows the color as border, it can be applied via the CSS property "border" or "border-color".

```
.border, #border, table{ border:4px solid
#FFA9A4 }
```

If only the border color should be changed use the property `border-color`.

```
.border{ border-color:#FFA9A4 }
```

If you want to add a box shadow in that color use:

Here you see how a box with a 4 pixel #FFA9A4 colored shadow looks like.

```
.boxshadow{ -moz-box-shadow:4px 4px 4px  
4px #FFA9A4; -webkit-box-shadow:4px 4px  
4px 4px #FFA9A4; box-shadow:4px 4px 4px  
4px #FFA9A4 }
```

Background

The CSS property to change the background color of an element to Hex FFA9A4 is called "background". The background property can be set on classes, ids or directly on the HTML element.

```
.background, #background, body{  
background:#FFA9A4 }
```

If only the background color should be changed can be used:

```
.background{ background-color:#FFA9A4 }
```

This example shows the color as background, it is applied via the CSS property "background".

To optimize and compress your CSS code, you can use our [online CSS compressor and optimizer](#) based on csstidy. If you want to create a linear or radial gradient as background or border, check our [CSS Gradient Generator](#).

Hey! You found this booklet interesting? Support Converting Colors with the new Membership Option!

The pro membership hides all ads, plus gives you double the colors in the color bucket, and more awesome pro features!

[Learn more, Memberships starting at \\$2.50/m!](#)

**Follow me
on Twitter!**

@ConvertingColor