

Converting Colors

Hex(FFAC98)

Have a look what the booklet for
Hex(FFAC98) contains.

Hex(FFAC98)	3
<i>Conversions</i>	4
<i>Details</i>	6
<i>Harmonies</i>	11
<i>Previews</i>	23
<i>Color Blindness Simulation</i>	26
<i>CSS Examples</i>	29

Color

Hex(FFAC98)

Conversions

Conversions Part 1

Format	Color
Hex	FFAC98
RGB	255, 172, 152
RGB Percent	100%, 67%, 60%
CMY	0.0000, 0.3255, 0.4039
CMYK	0.00, 0.33, 0.40, 0.00
HSL	12°, 100%, 80%
HSV	12°, 40%, 100%
XYZ	61.6600, 53.0320, 36.6921
YIQ	194.5370, 55.8880, 11.3760

Conversions

Conversions Part 2

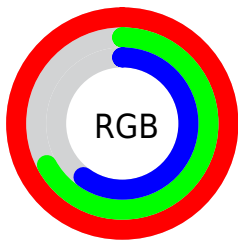
Format	Color
R _Y B	255, 177, 152
Decimal	16755864
CIE Lab	77.89, 28.12, 22.71
CIE LCh	78, 36.147, 38.921
Yxy	53.0320, 0.4073, 0.3503
Android (android.graphics.Color)	4294945944 (0xFFFFAC98)
YUV	194.5370, -20.9707, 53.0261
Hunter-Lab	72.8231, 23.6972, 21.1027

Details

The Hex color **FFAC98** is a light color, and the websafe version is hex **FF9999**. A complement of this color would be **98EBFF**, and the grayscale version is **C3C3C3**.

A 20% lighter version of the original color is **FFE4CE**, and **C47765** is the 20% darker color. If you saturate the color by 10%, you get **FF977F**, and if you desaturate by 10%, it is **FFC1B2**.

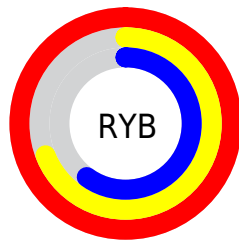
Distribution



Red (100%)

Green (67%)

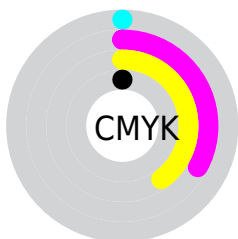
Blue (60%)



Red (100%)

Yellow (69%)

Blue (60%)

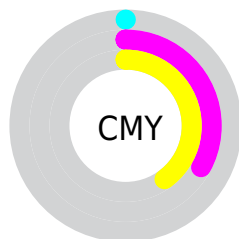


Cyan (0%)

Magenta (33%)

Yellow (40%)

Black (0%)



Cyan (0%)

Magenta (33%)

Yellow (40%)

Brightness & Saturation Gradients

These gradients show how the Hex color FFAC98 changes by changing the brightness by 10 percent. The first figure shows a shift by +10% for each color and the second figure -10%.

Similar to the brightness gradients but the following saturation gradients show a change of the Hex color FFAC98 by changing the saturation by 10% instead.

 FFAC98

 FFAC98

FFFFFF

 E1917E

 FFE4CE

 C47765

 FFFFEB

 A75E4D

 8B4536

 6F2E20

 54160A

 3A0000

 210001

 000000

 FFAC98

 FFAC98

 FF977F

 FFC1B2

 FF8365

 FFD5CB

 FF6E4C

 FFEAE5

 FF5A32

FFFEFE

 FF4518

FFFFFF

 FF3200

Harmonies

Analogous

The Analogous color harmony consists of three colors that are next to each other on the color wheel.



FFA7B8



FFAC98



ECB683

Triad

The Triadic color harmony groups three colors that are evenly spaced from another and form a triangle on the color wheel.



FFAC98



81D1A7



A2C0FF

Complementary

The Complementary color scheme is a pair of colors which are on the opposite of each other on the color wheel.



FFAC98



98EBFF

Split Complementary

Split-complementary colors differ from the complementary color scheme. The scheme consists of three colors, the original color and two neighbors of the complement color.



6FCBFE



FFAC98



5BD3CA

Square

The Square scheme is like the rectangle color scheme, but the four colors are evenly spaced on the color wheel.



FFAC98



A9CB8B



4DD1EA



D2B4F5

Rectangle

The Rectangle color scheme consists of four colors that form a rectangle on the color wheel.



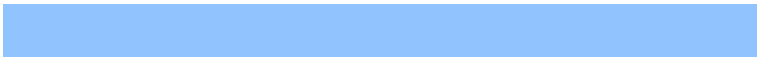
FFAC98



D9BE7D



4DD1EA



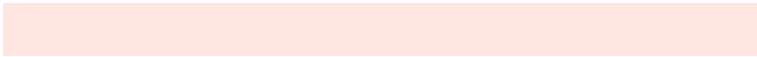
91C4FF

Sweetspot

The Sweet Spot groups the original color and five complimentary colors.



FFAC98



FFE6E0



FF98EC



80716E



000000



808080

Same Dimension

The Same Dimension uses a secret algorithm to generate beautiful new colors.



FFAC98



FF9C85



FFDE98



807573



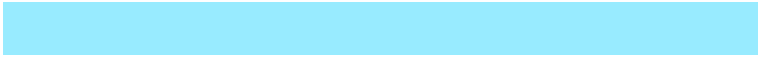
BF2500



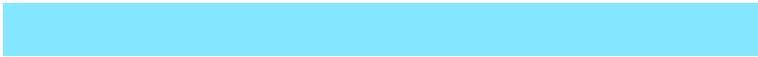
400C00

Inverse Universe

The Inverse Universe completely reimagines the original color for something new.



98EBFF



85E7FF



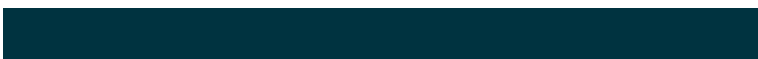
98B9FF



737D80



009ABF



003340

Previews

White Background



This preview shows how the Hex color FFAC98 looks on a white background.

Color Contrast Check

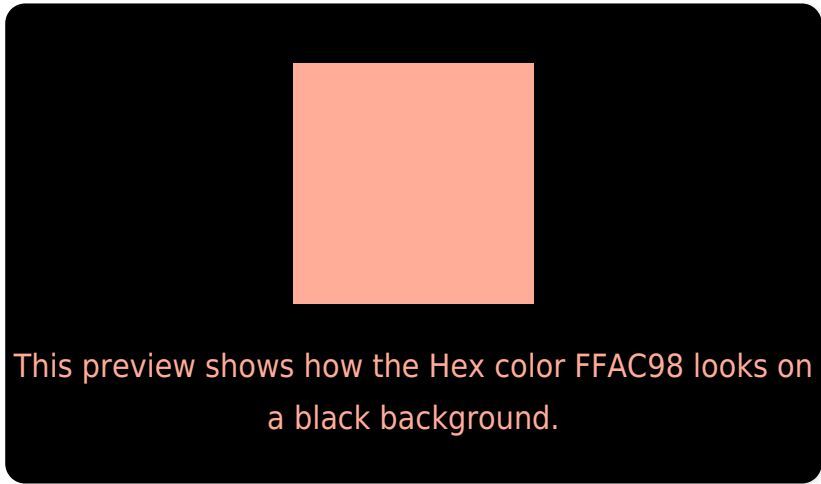
Large Text (above 18pt) WCAG AA × Fail

Any Text WCAG AA × Fail

Large Text (above 18pt) WCAG AAA × Fail

Any Text WCAG AAA × Fail

Black Background



Color Contrast Check

Large Text (above 18pt) WCAG AA ✓ Pass

Any Text WCAG AA ✓ Pass

Large Text (above 18pt) WCAG AAA ✓ Pass

Any Text WCAG AAA ✓ Pass

If you want to check with other color combinations, try the [Color Contrast Checker](#).

Hex FFAC98 Background



This preview shows how black text looks on a background with the Hex color FFAC98.

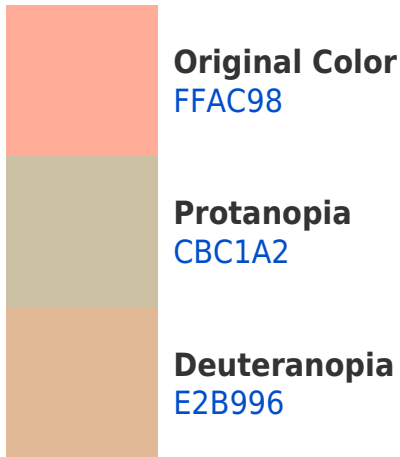


This preview shows how white text looks on a background with the Hex color FFAC98.

Color Blindness Simulation

Color vision deficiency is a very complex topic, and I could not describe the different causes any better than Wikipedia does, so if you want to learn more, you should check out their [article about color blindness](#).

Dichromacy



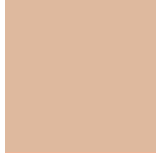


Tritanopia
FFA9B5

Trichromacy



Original Color
FFAC98



Protanomaly
DEB99E



Deuteranomaly
EDB497

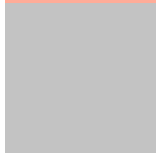


Tritanomaly
FFAAAA

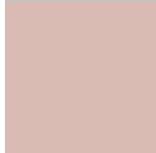
Monochromacy



Original Color
FFAC98



Achromatopsia
C3C3C3



Achromatomaly
D9BBB3

CSS Examples

Text

The CSS property to change the color of the text to Hex FFAC98 is called "color". The color property can be set on classes, ids or directly on the HTML element.

This example shows how text in the color #FFAC98 looks like.

```
.text, #text, p{  
    color:#FFAC98  
}
```

If you want to add a text shadow in that color use the text-shadow property, you can generate a text shadow directly with our [CSS Text Shadow Generator](#).

Here you see how black text with a 4 pixel #FFAC98 colored shadow looks like.

```
.shadow{ text-shadow: 4px 4px 2px #FFAC98
}
```

Border

The CSS property to change the border of an element to Hex FFAC98 is called "border". The border property can be set on classes, ids or directly on the HTML element.

This example shows the color as border, it can be applied via the CSS property "border" or "border-color".

```
.border, #border, table{ border:4px solid
#FFAC98 }
```

If only the border color should be changed use the property `border-color`.

```
.border{ border-color:#FFAC98 }
```

If you want to add a box shadow in that color use:

Here you see how a box with a 4 pixel #FFAC98 colored shadow looks like.

```
.boxshadow{ -moz-box-shadow:4px 4px 4px  
4px #FFAC98; -webkit-box-shadow:4px 4px  
4px 4px #FFAC98; box-shadow:4px 4px 4px  
4px #FFAC98 }
```

Background

The CSS property to change the background color of an element to Hex FFAC98 is called "background". The background property can be set on classes, ids or directly on the HTML element.

```
.background, #background, body{  
background:#FFAC98 }
```

If only the background color should be changed can be used:

```
.background{ background-color:#FFAC98 }
```

This example shows the color as background, it is applied via the CSS property "background".

To optimize and compress your CSS code, you can use our [online CSS compressor and optimizer](#) based on csstidy. If you want to create a linear or radial gradient as background or border, check our [CSS Gradient Generator](#).

Hey! You found this booklet interesting? Support Converting Colors with the new Membership Option!

The pro membership hides all ads, plus gives you double the colors in the color bucket, and more awesome pro features!

[Learn more, Memberships starting at \\$2.50/m!](#)

**Follow me
on Twitter!**

@ConvertingColor