

Converting Colors

Hex(FFAD96)

Have a look what the booklet for
Hex(FFAD96) contains.

Hex(FFAD96)	3
<i>Conversions</i>	4
<i>Details</i>	6
<i>Harmonies</i>	11
<i>Previews</i>	23
<i>Color Blindness Simulation</i>	26
<i>CSS Examples</i>	29

Color

Hex(FFAD96)

Conversions

Conversions Part 1

Format	Color
Hex	FFAD96
RGB	255, 173, 150
RGB Percent	100%, 68%, 59%
CMY	0.0000, 0.3216, 0.4118
CMYK	0.00, 0.32, 0.41, 0.00
HSL	13°, 100%, 79%
HSV	13°, 41%, 100%
XYZ	61.6886, 53.3491, 35.9002
YIQ	194.8960, 56.2550, 10.2310

Conversions

Conversions Part 2

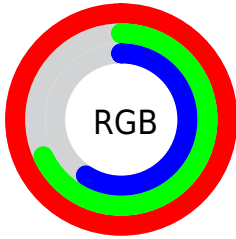
Format	Color
R _Y B	255, 179, 150
Decimal	16756118
CIE Lab	78.08, 27.38, 24.04
CIE LCh	78, 36.439, 41.279
Yxy	53.3491, 0.4087, 0.3535
Android (android.graphics.Color)	4294946198 (0xFFFFAD96)
YUV	194.8960, -22.1337, 52.7112
Hunter-Lab	73.0405, 22.9368, 21.9866

Details

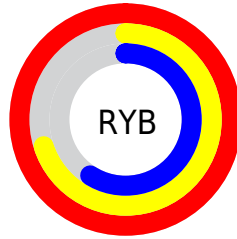
The Hex color **FFAD96** is a light color, and the websafe version is hex **FF9999**. A complement of this color would be **96E8FF**, and the grayscale version is **C3C3C3**.

A 20% lighter version of the original color is **FFE5CC**, and **C47863** is the 20% darker color. If you saturate the color by 10%, you get **FF997D**, and if you desaturate by 10%, it is **FFC1B0**.

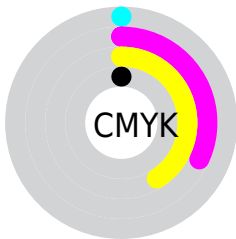
Distribution



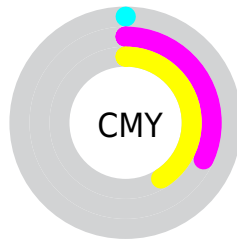
- Red (100%)
- Green (68%)
- Blue (59%)



- Red (100%)
- Yellow (70%)
- Blue (59%)



- Cyan (0%)
- Magenta (32%)
- Yellow (41%)
- Black (0%)



- Cyan (0%)
- Magenta (32%)
- Yellow (41%)

Brightness & Saturation Gradients


These gradients show how the Hex color FFAD96 changes by changing the brightness by 10 percent. The first figure shows a shift by +10% for each color and the second figure -10%.

Similar to the brightness gradients but the following saturation gradients show a change of the Hex color FFAD96 by changing the saturation by 10% instead.

 FFAD96

 FFAD96

FFFFFF

 E1927C

 FFE5CC

 C47863

 FFFFEE

 A75F4B

 8B4634

 6F2F1F

 541708

 3A0000

 210001

 000000

 FFAD96

 FFAD96

 FF997D

 FFC1B0

 FF8563

 FFD5C9

 FF714A

 FFE9E3

 FF5D30

 FFFDFC

 FF4917

FFFFFF

 FF3800

Harmonies

Analogous

The Analogous color harmony consists of three colors that are next to each other on the color wheel.



FFA7B5



FFAD96



EBB882

Triad

The Triadic color harmony groups three colors that are evenly spaced from another and form a triangle on the color wheel.



FFAD96



7ED2AA



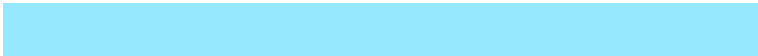
A7C0FF

Complementary

The Complementary color scheme is a pair of colors which are on the opposite of each other on the color wheel.



FFAD96



96E8FF

Split Complementary

Split-complementary colors differ from the complementary color scheme. The scheme consists of three colors, the original color and two neighbors of the complement color.



72CAFF



FFAD96



57D4CD

Square

The Square scheme is like the rectangle color scheme, but the four colors are evenly spaced on the color wheel.



FFAD96



A6CC8D



4DD1ED



D6B4F4

Rectangle

The Rectangle color scheme consists of four colors that form a rectangle on the color wheel.



FFAD96



D7BF7D



4DD1ED



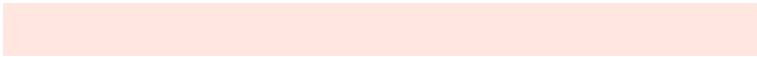
95C4FF

Sweetspot

The Sweet Spot groups the original color and five complimentary colors.



FFAD96



FFE7E0



FF96E8



80726E



000000



808080

Same Dimension

The Same Dimension uses a secret algorithm to generate beautiful new colors.



FFAD96



FF9D82



FFE196



807673



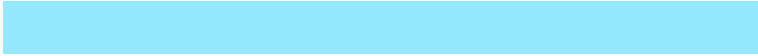
BF2A00



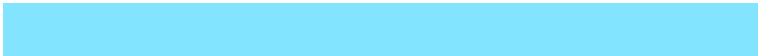
400E00

Inverse Universe

The Inverse Universe completely reimagines the original color for something new.



96E8FF



82E4FF



96B4FF



737D80



0095BF



003240

Previews

White Background



This preview shows how the Hex color FFAD96 looks on a white background.

Color Contrast Check

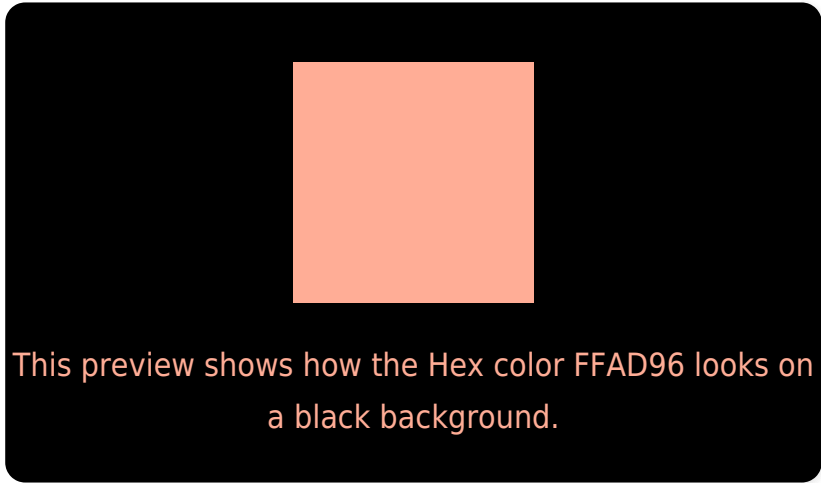
Large Text (above 18pt) WCAG AA × Fail

Any Text WCAG AA × Fail

Large Text (above 18pt) WCAG AAA × Fail

Any Text WCAG AAA × Fail

Black Background



Color Contrast Check

Large Text (above 18pt) WCAG AA ✓ Pass

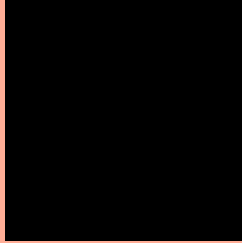
Any Text WCAG AA ✓ Pass

Large Text (above 18pt) WCAG AAA ✓ Pass

Any Text WCAG AAA ✓ Pass

If you want to check with other color combinations, try the [Color Contrast Checker](#).

Hex FFAD96 Background



This preview shows how black text looks on a background with the Hex color FFAD96.

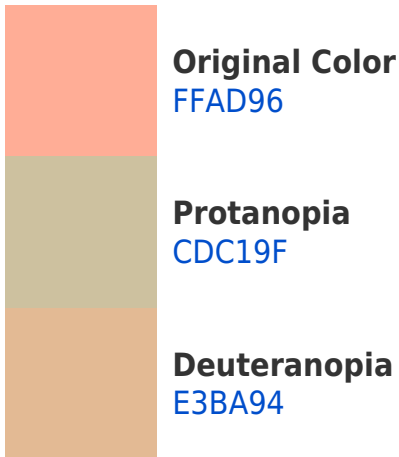


This preview shows how white text looks on a background with the Hex color FFAD96.

Color Blindness Simulation

Color vision deficiency is a very complex topic, and I could not describe the different causes any better than Wikipedia does, so if you want to learn more, you should check out their [article about color blindness](#).

Dichromacy



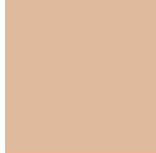


Tritanopia
FFAAB6

Trichromacy



Original Color
FFAD96



Protanomaly
DFBA9C



Deuteranomaly
EDB595

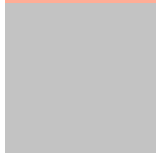


Tritanomaly
FFABAA

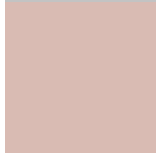
Monochromacy



Original Color
FFAD96



Achromatopsia
C3C3C3



Achromatomaly
D9BBB3

CSS Examples

Text

The CSS property to change the color of the text to Hex FFAD96 is called "color". The color property can be set on classes, ids or directly on the HTML element.

This example shows how text in the color #FFAD96 looks like.

```
.text, #text, p{  
    color:#FFAD96  
}
```

If you want to add a text shadow in that color use the text-shadow property, you can generate a text shadow directly with our [CSS Text Shadow Generator](#).

Here you see how black text with a 4 pixel #FFAD96 colored shadow looks like.

```
.shadow{ text-shadow: 4px 4px 2px #FFAD96  
}
```

Border

The CSS property to change the border of an element to Hex FFAD96 is called "border". The border property can be set on classes, ids or directly on the HTML element.

This example shows the color as border, it can be applied via the CSS property "border" or "border-color".

```
.border, #border, table{ border:4px solid  
#FFAD96 }
```

If only the border color should be changed use the property `border-color`.

```
.border{ border-color:#FFAD96 }
```

If you want to add a box shadow in that color use:

Here you see how a box with a 4 pixel #FFAD96 colored shadow looks like.

```
.boxshadow{ -moz-box-shadow:4px 4px 4px  
4px #FFAD96; -webkit-box-shadow:4px 4px  
4px 4px #FFAD96; box-shadow:4px 4px 4px  
4px #FFAD96 }
```

Background

The CSS property to change the background color of an element to Hex FFAD96 is called "background". The background property can be set on classes, ids or directly on the HTML element.

```
.background, #background, body{  
background:#FFAD96 }
```

If only the background color should be changed can be used:

```
.background{ background-color:#FFAD96 }
```

This example shows the color as background, it is applied via the CSS property "background".

To optimize and compress your CSS code, you can use our [online CSS compressor and optimizer](#) based on csstidy. If you want to create a linear or radial gradient as background or border, check our [CSS Gradient Generator](#).

Hey! You found this booklet interesting? Support Converting Colors with the new Membership Option!

The pro membership hides all ads, plus gives you double the colors in the color bucket, and more awesome pro features!

[Learn more, Memberships starting at \\$2.50/m!](#)

**Follow me
on Twitter!**

@ConvertingColor