

Converting Colors

Hex(FFAD9F)

Have a look what the booklet for
Hex(FFAD9F) contains.

Hex(FFAD9F)	3
<i>Conversions</i>	4
<i>Details</i>	6
<i>Harmonies</i>	11
<i>Previews</i>	23
<i>Color Blindness Simulation</i>	26
<i>CSS Examples</i>	29

Color

Hex(FFAD9F)

Conversions

Conversions Part 1

Format	Color
Hex	FFAD9F
RGB	255, 173, 159
RGB Percent	100%, 68%, 62%
CMY	0.0000, 0.3216, 0.3765
CMYK	0.00, 0.32, 0.38, 0.00
HSL	9°, 100%, 81%
HSV	9°, 38%, 100%
XYZ	62.4416, 53.6503, 39.8654
YIQ	195.9220, 53.3660, 13.0300

Conversions

Conversions Part 2

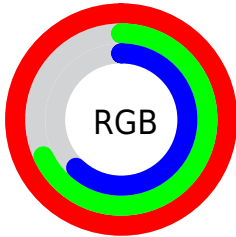
Format	Color
R _Y B	255, 175, 159
Decimal	16756127
CIE Lab	78.26, 28.38, 19.43
CIE LCh	78, 34.394, 34.405
Yxy	53.6503, 0.4004, 0.3440
Android (android.graphics.Color)	4294946207 (0xFFFFAD9F)
YUV	195.9220, -18.2025, 51.8114
Hunter-Lab	73.2464, 23.9877, 19.0030

Details

The Hex color **FFAD9F** is a light color, and the websafe version is hex **FF9999**. A complement of this color would be **9FF1FF**, and the grayscale version is **C4C4C4**.

A 20% lighter version of the original color is **FFE5D6**, and **C4786C** is the 20% darker color. If you saturate the color by 10%, you get **FF9785**, and if you desaturate by 10%, it is **FFC3B9**.

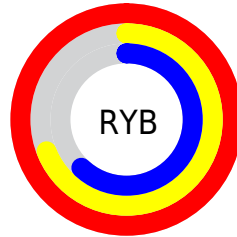
Distribution



Red (100%)

Green (68%)

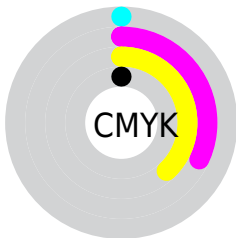
Blue (62%)



Red (100%)

Yellow (69%)

Blue (62%)

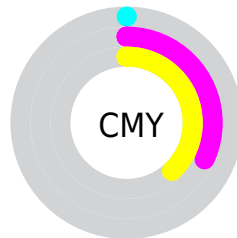


Cyan (0%)

Magenta (32%)

Yellow (38%)

Black (0%)



Cyan (0%)

Magenta (32%)

Yellow (38%)

Brightness & Saturation Gradients

These gradients show how the Hex color FFAD9F changes by changing the brightness by 10 percent. The first figure shows a shift by +10% for each color and the second figure -10%.

Similar to the brightness gradients but the following saturation gradients show a change of the Hex color FFAD9F by changing the saturation by 10% instead.

 FFAD9F

 FFAD9F

FFFFFF

 E19285

 FFE5D6

 C4786C

 FFFFF2

 A75F53

 8B463C

 702E26

 551712

 3B0000

 230001

 000000

 FFAD9F

 FFAD9F

 FF9785

 FFC3B9

 FF816C

 FFD9D2

 FF6C52

 FFEEEC

 FF5639

FFFFFF

 FF401F

 FF2A06

 FF2500

Harmonies

Analogous

The Analogous color harmony consists of three colors that are next to each other on the color wheel.



FFAABE



FFAD9F



EFB689

Triad

The Triadic color harmony groups three colors that are evenly spaced from another and form a triangle on the color wheel.



FFAD9F



8BD1A5



9EC3FF

Complementary

The Complementary color scheme is a pair of colors which are on the opposite of each other on the color wheel.



FFAD9F



9FF1FF

Split Complementary

Split-complementary colors differ from the complementary color scheme. The scheme consists of three colors, the original color and two neighbors of the complement color.



70CCFA



FFAD9F



68D3C5

Square

The Square scheme is like the rectangle color scheme, but the four colors are evenly spaced on the color wheel.



FFAD9F



B1CA8C



57D2E5



CCB8F6

Rectangle

The Rectangle color scheme consists of four colors that form a rectangle on the color wheel.



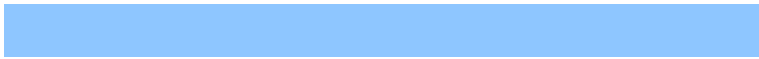
FFAD9F



DDBD82



57D2E5



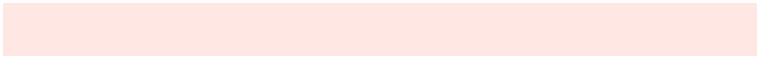
8EC6FF

Sweetspot

The Sweet Spot groups the original color and five complimentary colors.



FFAD9F



FFE7E3



FF9FF2



80716F



000000



808080

Same Dimension

The Same Dimension uses a secret algorithm to generate beautiful new colors.



FFAD9F



FF9D8C



FFDC9F



807573



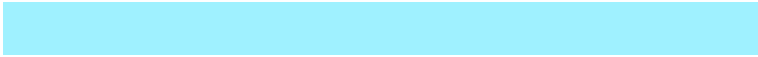
BF1C00



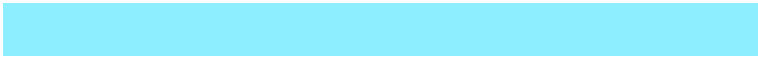
400900

Inverse Universe

The Inverse Universe completely reimagines the original color for something new.



9FF1FF



8CEEFF



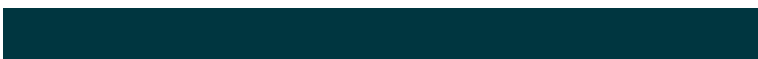
9FC2FF



737E80



00A3BF



003640

Previews

White Background



This preview shows how the Hex color FFAD9F looks on a white background.

Color Contrast Check

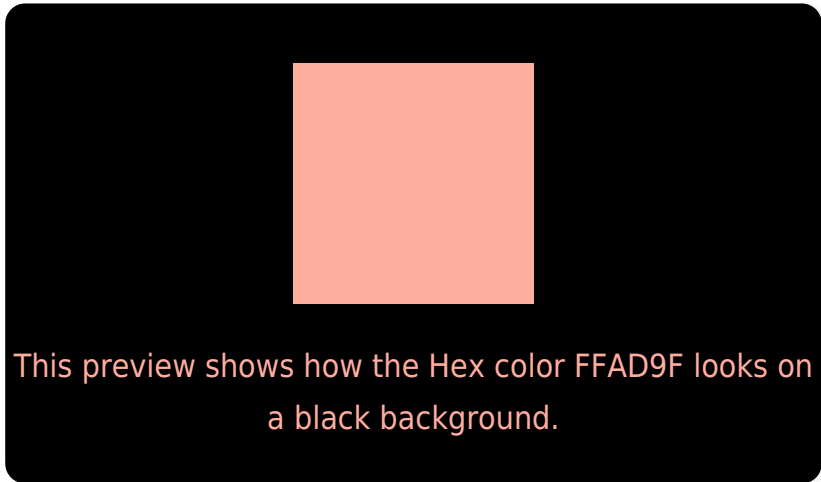
Large Text (above 18pt) WCAG AA × Fail

Any Text WCAG AA × Fail

Large Text (above 18pt) WCAG AAA × Fail

Any Text WCAG AAA × Fail

Black Background



Color Contrast Check

Large Text (above 18pt) WCAG AA ✓ Pass

Any Text WCAG AA ✓ Pass

Large Text (above 18pt) WCAG AAA ✓ Pass

Any Text WCAG AAA ✓ Pass

If you want to check with other color combinations, try the [Color Contrast Checker](#).

Hex FFAD9F Background



This preview shows how black text looks on a background with the Hex color FFAD9F.

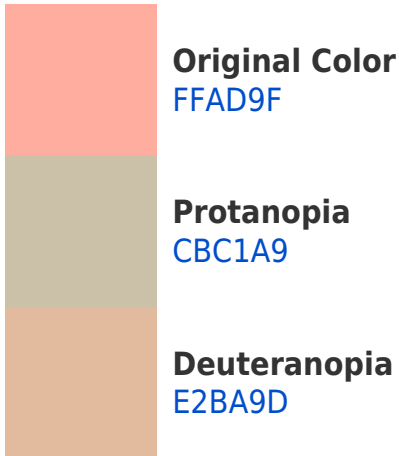


This preview shows how white text looks on a background with the Hex color FFAD9F.

Color Blindness Simulation

Color vision deficiency is a very complex topic, and I could not describe the different causes any better than Wikipedia does, so if you want to learn more, you should check out their [article about color blindness](#).

Dichromacy



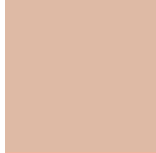


Tritanopia
FFABB7

Trichromacy



Original Color
FFAD9F



Protanomaly
DEBAA5



Deuteranomaly
EDB59E

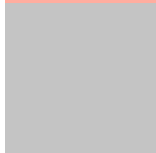


Tritanomaly
FFACAE

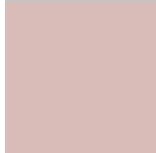
Monochromacy



Original Color
FFAD9F



Achromatopsia
C4C4C4



Achromatomaly
D9BCB7

CSS Examples

Text

The CSS property to change the color of the text to Hex FFAD9F is called "color". The color property can be set on classes, ids or directly on the HTML element.

This example shows how text in the color #FFAD9F looks like.

```
.text, #text, p{  
    color:#FFAD9F  
}
```

If you want to add a text shadow in that color use the text-shadow property, you can generate a text shadow directly with our [CSS Text Shadow Generator](#).

Here you see how black text with a 4 pixel #FFAD9F colored shadow looks like.

```
.shadow{ text-shadow: 4px 4px 2px #FFAD9F
}
```

Border

The CSS property to change the border of an element to Hex FFAD9F is called "border". The border property can be set on classes, ids or directly on the HTML element.

This example shows the color as border, it can be applied via the CSS property "border" or "border-color".

```
.border, #border, table{ border:4px solid
#FFAD9F }
```

If only the border color should be changed use the property `border-color`.

```
.border{ border-color:#FFAD9F }
```

If you want to add a box shadow in that color use:

Here you see how a box with a 4 pixel #FFAD9F colored shadow looks like.

```
.boxshadow{ -moz-box-shadow:4px 4px 4px  
4px #FFAD9F; -webkit-box-shadow:4px 4px  
4px 4px #FFAD9F; box-shadow:4px 4px 4px  
4px #FFAD9F }
```

Background

The CSS property to change the background color of an element to Hex FFAD9F is called "background". The background property can be set on classes, ids or directly on the HTML element.

```
.background, #background, body{  
background:#FFAD9F }
```

If only the background color should be changed can be used:

```
.background{ background-color:#FFAD9F }
```

This example shows the color as background, it is applied via the CSS property "background".

To optimize and compress your CSS code, you can use our [online CSS compressor and optimizer](#) based on csstidy. If you want to create a linear or radial gradient as background or border, check our [CSS Gradient Generator](#).

Hey! You found this booklet interesting? Support Converting Colors with the new Membership Option!

The pro membership hides all ads, plus gives you double the colors in the color bucket, and more awesome pro features!

[Learn more, Memberships starting at \\$2.50/m!](#)

**Follow me
on Twitter!**

@ConvertingColor