

Converting Colors

Hex(FFAEAD)

Have a look what the booklet for
Hex(FFAEAD) contains.

| | |
|--|----|
| Hex(FFAEAD) | 3 |
| <i>Conversions</i> | 4 |
| <i>Details</i> | 6 |
| <i>Harmonies</i> | 11 |
| <i>Previews</i> | 23 |
| <i>Color Blindness Simulation</i> | 26 |
| <i>CSS Examples</i> | 29 |

Color

Hex(FFAEAD)

Conversions

Conversions Part 1

| Format | Color |
|-------------|----------------------------|
| Hex | FFAEAD |
| RGB | 255, 174, 173 |
| RGB Percent | 100%, 68%, 68% |
| CMY | 0.0000, 0.3176, 0.3216 |
| CMYK | 0.00, 0.32, 0.32, 0.00 |
| HSL | 1°, 100%, 84% |
| HSV | 1°, 32%, 100% |
| XYZ | 63.9189, 54.5492, 46.6953 |
| YIQ | 198.1050, 48.5970, 16.8610 |

Conversions

Conversions Part 2

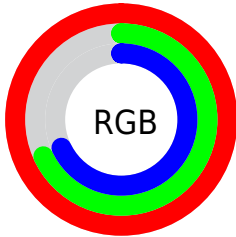
| Format | Color |
|-------------------------------------|--------------------------------|
| R _Y B | 255, 174, 173 |
| Decimal | 16756397 |
| CIE Lab | 78.78, 29.52, 12.59 |
| CIE LCh | 79, 32.095, 23.100 |
| Yxy | 54.5492, 0.3870, 0.3303 |
| Android (android.graphics.Color) | 4294946477 (0xFFFFAEAD) |
| YUV | 198.1050, -12.3768, 49.8969 |
| Hunter-Lab | 73.8575, 25.2297, 14.2150 |

Details

The Hex color **FFAEAD** is a light color, and the websafe version is hex **FF9999**. A complement of this color would be **ADFEFF**, and the grayscale version is **C6C6C6**.

A 20% lighter version of the original color is **FFE6E4**, and **C47979** is the 20% darker color. If you saturate the color by 10%, you get **FF9593**, and if you desaturate by 10%, it is **FFC7C7**.

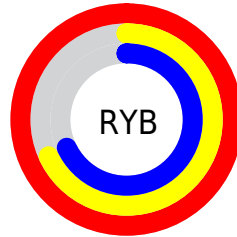
Distribution



Red (100%)

Green (68%)

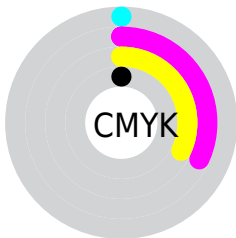
Blue (68%)



Red (100%)

Yellow (68%)

Blue (68%)

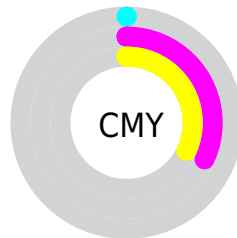


Cyan (0%)

Magenta (32%)

Yellow (32%)

Black (0%)



Cyan (0%)

Magenta (32%)

Yellow (32%)

Brightness & Saturation Gradients

These gradients show how the Hex color FFAEAD changes by changing the brightness by 10 percent. The first figure shows a shift by +10% for each color and the second figure -10%.

Similar to the brightness gradients but the following saturation gradients show a change of the Hex color FFAEAD by changing the saturation by 10% instead.

 FFAEAD

 FFAEAD

FFFFFF

 E19392

 FFE6E4

 C47979

 A85F60

 8C4748

 712F32

 56171D

 3D0003

 260001

 000000

 FFAEAD

 FFAEAD

 FF9593

 FFC7C7

 FF7C7A

 FFE0E0

 FF6261

 FFFAFA

 FF4947

FFFFFF

 FF302E

 FF1714

 FF0300

Harmonies

Analogous

The Analogous color harmony consists of three colors that are next to each other on the color wheel.



F9ADCB



FFAEAD



F5B594

Triad

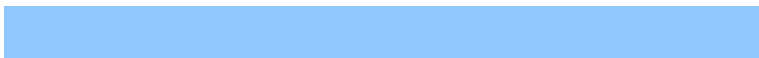
The Triadic color harmony groups three colors that are evenly spaced from another and form a triangle on the color wheel.



FFAEAD



9ECF9E



92C8FE

Complementary

The Complementary color scheme is a pair of colors which are on the opposite of each other on the color wheel.



FFAEAD



ADFEFF

Split Complementary

Split-complementary colors differ from the complementary color scheme. The scheme consists of three colors, the original color and two neighbors of the complement color.



6ECFF2



FFAEAD



7CD3BB

Square

The Square scheme is like the rectangle color scheme, but the four colors are evenly spaced on the color wheel.



FFAEAD



C0C88C



66D3D9



BEBEFA

Rectangle

The Rectangle color scheme consists of four colors that form a rectangle on the color wheel.



FFAEAD



E7BB8A



66D3D9



85CBFB

Sweetspot

The Sweet Spot groups the original color and five complimentary colors.



FFAEAD



FFE6E6



FFADFF



807070



000000



808080

Same Dimension

The Same Dimension uses a secret algorithm to generate beautiful new colors.



FFAEAD



FF9D9C



FFD6AD



807373



BF0200



400100

Inverse Universe

The Inverse Universe completely reimagines the original color for something new.



ADFEFF



9CFEFF



ADD6FF



737F80



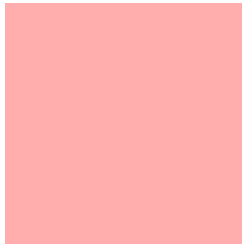
00BDBF



003F40

Previews

White Background



This preview shows how the Hex color FFAEAD looks on a white background.

Color Contrast Check

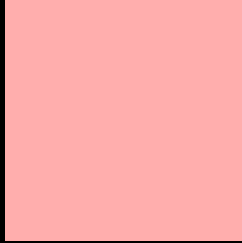
Large Text (above 18pt) WCAG AA × Fail

Any Text WCAG AA × Fail

Large Text (above 18pt) WCAG AAA × Fail

Any Text WCAG AAA × Fail

Black Background



This preview shows how the Hex color FFAEAD looks on a black background.

Color Contrast Check

Large Text (above 18pt) WCAG AA ✓ Pass

Any Text WCAG AA ✓ Pass

Large Text (above 18pt) WCAG AAA ✓ Pass

Any Text WCAG AAA ✓ Pass

If you want to check with other color combinations, try the [Color Contrast Checker](#).

Hex FFAEAD Background



This preview shows how black text looks on a background with the Hex color FFAEAD.

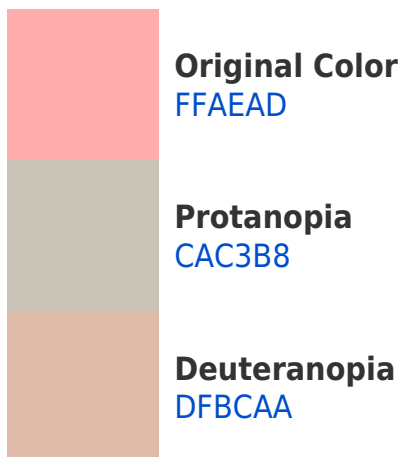


This preview shows how white text looks on a background with the Hex color FFAEAD.

Color Blindness Simulation

Color vision deficiency is a very complex topic, and I could not describe the different causes any better than Wikipedia does, so if you want to learn more, you should check out their [article about color blindness](#).

Dichromacy



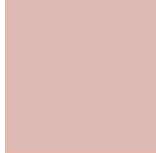


Tritanopia
FFADB9

Trichromacy



Original Color
FFAEAD



Protanomaly
DDBBB4



Deuteranomaly
EBB7AB

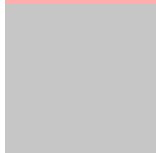


Tritanomaly
FFADB5

Monochromacy



Original Color
FFAEAD



Achromatopsia
C6C6C6



Achromatomaly
DBBDBD

CSS Examples

Text

The CSS property to change the color of the text to Hex FFAEAD is called "color". The color property can be set on classes, ids or directly on the HTML element.

This example shows how text in the color #FFAEAD looks like.

```
.text, #text, p{  
  color:#FFAEAD  
}
```

If you want to add a text shadow in that color use the text-shadow property, you can generate a text shadow directly with our [CSS Text Shadow Generator](#).

Here you see how black text with a 4 pixel #FFAEAD colored shadow looks like.

```
.shadow{ text-shadow: 4px 4px 2px #FFAEAD
}
```

Border

The CSS property to change the border of an element to Hex FFAEAD is called "border". The border property can be set on classes, ids or directly on the HTML element.

This example shows the color as border, it can be applied via the CSS property "border" or "border-color".

```
.border, #border, table{ border:4px solid
#FFAEAD }
```

If only the border color should be changed use the property `border-color`.

```
.border{ border-color:#FFAEAD }
```

If you want to add a box shadow in that color use:

Here you see how a box with a 4 pixel #FFAEAD colored shadow looks like.

```
.boxshadow{ -moz-box-shadow:4px 4px 4px  
4px #FFAEAD; -webkit-box-shadow:4px 4px  
4px 4px #FFAEAD; box-shadow:4px 4px 4px  
4px #FFAEAD }
```

Background

The CSS property to change the background color of an element to Hex FFAEAD is called "background". The background property can be set on classes, ids or directly on the HTML element.

```
.background, #background, body{  
background:#FFAEAD }
```

If only the background color should be changed can be used:

```
.background{ background-color:#FFAEAD }
```

This example shows the color as background, it is applied via the CSS property "background".

To optimize and compress your CSS code, you can use our [online CSS compressor and optimizer](#) based on csstidy. If you want to create a linear or radial gradient as background or border, check our [CSS Gradient Generator](#).

Hey! You found this booklet interesting? Support Converting Colors with the new Membership Option!

The pro membership hides all ads, plus gives you double the colors in the color bucket, and more awesome pro features!

[Learn more, Memberships starting at \\$2.50/m!](#)

**Follow me
on Twitter!**

@ConvertingColor