

Converting Colors

Hex(FFB2A8)

Have a look what the booklet for
Hex(FFB2A8) contains.

Hex(FFB2A8)	3
<i>Conversions</i>	4
<i>Details</i>	6
<i>Harmonies</i>	11
<i>Previews</i>	23
<i>Color Blindness Simulation</i>	26
<i>CSS Examples</i>	29

Color

Hex(FFB2A8)

Conversions

Conversions Part 1

Format	Color
Hex	FFB2A8
RGB	255, 178, 168
RGB Percent	100%, 70%, 66%
CMY	0.0000, 0.3020, 0.3412
CMYK	0.00, 0.30, 0.34, 0.00
HSL	7°, 100%, 83%
HSV	7°, 34%, 100%
XYZ	64.2283, 55.9279, 44.4558
YIQ	199.8830, 49.1020, 13.2140

Conversions

Conversions Part 2

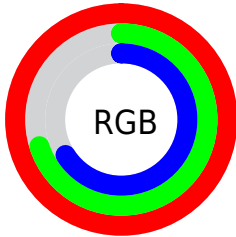
Format	Color
R _{YB}	255, 179, 168
Decimal	16757416
CIE _{Lab}	79.57, 26.81, 16.41
CIE _{LCh}	80, 31.436, 31.464
Yxy	55.9279, 0.3902, 0.3398
Android (android.graphics.Color)	4294947496 (0xFFFFB2A8)
YUV	199.8830, -15.7183, 48.3376
Hunter-Lab	74.7850, 22.4291, 17.1047

Details

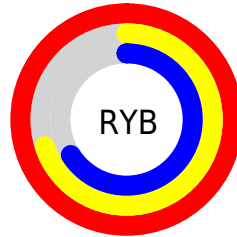
The Hex color **FFB2A8** is a light color, and the websafe version is hex **FF9999**. A complement of this color would be **A8F5FF**, and the grayscale version is **C8C8C8**.

A 20% lighter version of the original color is **FFEADF**, and **C47D74** is the 20% darker color. If you saturate the color by 10%, you get **FF9B8F**, and if you desaturate by 10%, it is **FFC9C2**.

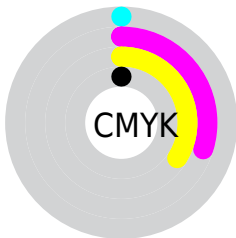
Distribution



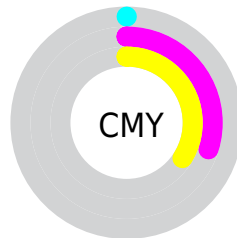
- Red (100%)
- Green (70%)
- Blue (66%)



- Red (100%)
- Yellow (70%)
- Blue (66%)



- Cyan (0%)
- Magenta (30%)
- Yellow (34%)
- Black (0%)



- Cyan (0%)
- Magenta (30%)
- Yellow (34%)

Brightness & Saturation Gradients

These gradients show how the Hex color FFB2A8 changes by changing the brightness by 10 percent. The first figure shows a shift by +10% for each color and the second figure -10%.

Similar to the brightness gradients but the following saturation gradients show a change of the Hex color FFB2A8 by changing the saturation by 10% instead.

 FFB2A8

 FFB2A8

FFFFFF

 E1978E

 FFEADF

 C47D74

FFFFFFC

 A8635B

 8C4B44

 71332E

 561C19

 3D0400

 260001

 000000

 #FFB2A8

 #FFB2A8

 #FF9B8F

 #FFC9C2

 #FF8575

 #FFDFDB

 #FF6E5B

 #FFF6F5

 #FF5842

FFFFFF

 #FF4128

 #FF2B0F

 #FF1D00

Harmonies

Analogous

The Analogous color harmony consists of three colors that are next to each other on the color wheel.



FEB0C5



FFB2A8



F1BA93

Triad

The Triadic color harmony groups three colors that are evenly spaced from another and form a triangle on the color wheel.



FFB2A8



97D3A8



A2C7FF

Complementary

The Complementary color scheme is a pair of colors which are on the opposite of each other on the color wheel.



FFB2A8



A8F5FF

Split Complementary

Split-complementary colors differ from the complementary color scheme. The scheme consists of three colors, the original color and two neighbors of the complement color.



7BD0F8



FFB2A8



79D5C6

Square

The Square scheme is like the rectangle color scheme, but the four colors are evenly spaced on the color wheel.



FFB2A8



B9CD93



6AD4E3



CBBDF7

Rectangle

The Rectangle color scheme consists of four colors that form a rectangle on the color wheel.



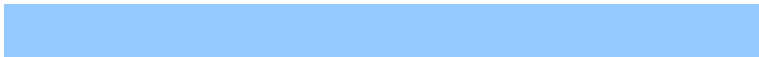
FFB2A8



E2C08C



6AD4E3



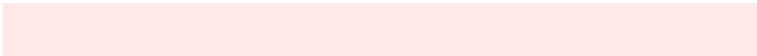
94CAFF

Sweetspot

The Sweet Spot groups the original color and five complimentary colors.



FFB2A8



FFE8E6



FFA8F6



807270



000000



808080

Same Dimension

The Same Dimension uses a secret algorithm to generate beautiful new colors.



FFB2A8



FFA296



FFDCA8



807473



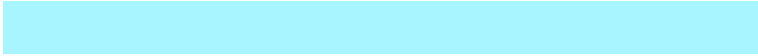
BF1600



400700

Inverse Universe

The Inverse Universe completely reimagines the original color for something new.



A8F5FF



96F3FF



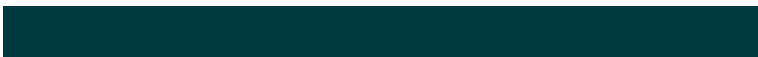
A8CBFF



737E80



00A9BF



003840

Previews

White Background



This preview shows how the Hex color FFB2A8 looks on a white background.

Color Contrast Check

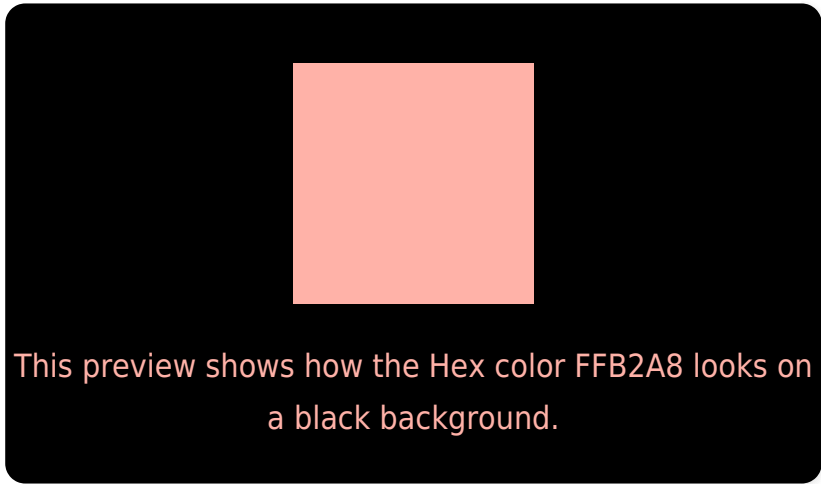
Large Text (above 18pt) WCAG AA × Fail

Any Text WCAG AA × Fail

Large Text (above 18pt) WCAG AAA × Fail

Any Text WCAG AAA × Fail

Black Background



Color Contrast Check

Large Text (above 18pt) WCAG AA ✓ Pass

Any Text WCAG AA ✓ Pass

Large Text (above 18pt) WCAG AAA ✓ Pass

Any Text WCAG AAA ✓ Pass

If you want to check with other color combinations, try the [Color Contrast Checker](#).

Hex FFB2A8 Background



This preview shows how black text looks on a background with the Hex color FFB2A8.

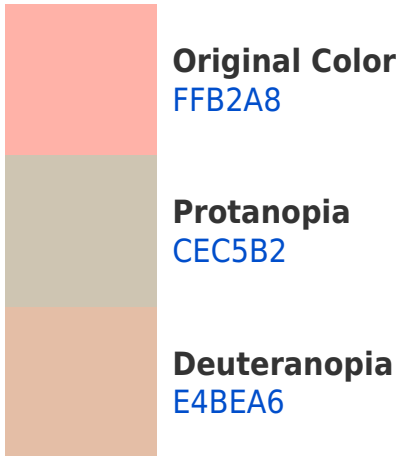



This preview shows how white text looks on a background with the Hex color FFB2A8.

Color Blindness Simulation

Color vision deficiency is a very complex topic, and I could not describe the different causes any better than Wikipedia does, so if you want to learn more, you should check out their [article about color blindness](#).

Dichromacy



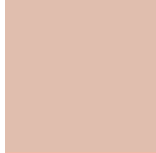


Tritanopia
FFB0BD

Trichromacy



Original Color
FFB2A8



Protanomaly
E0BEAE



Deuteranomaly
EEBA07

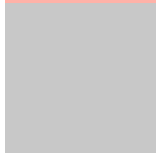


Tritanomaly
FFB1B5

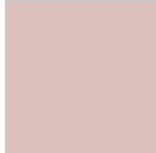
Monochromacy



Original Color
FFB2A8



Achromatopsia
C8C8C8



Achromatomaly
DCC0BC

CSS Examples

Text

The CSS property to change the color of the text to Hex FFB2A8 is called "color". The color property can be set on classes, ids or directly on the HTML element.

This example shows how text in the color #FFB2A8 looks like.

```
.text, #text, p{  
    color:#FFB2A8  
}
```

If you want to add a text shadow in that color use the text-shadow property, you can generate a text shadow directly with our [CSS Text Shadow Generator](#).

Here you see how black text with a 4 pixel #FFB2A8 colored shadow looks like.

```
.shadow{ text-shadow: 4px 4px 2px #FFB2A8
}
```

Border

The CSS property to change the border of an element to Hex FFB2A8 is called "border". The border property can be set on classes, ids or directly on the HTML element.

This example shows the color as border, it can be applied via the CSS property "border" or "border-color".

```
.border, #border, table{ border:4px solid
#FFB2A8 }
```

If only the border color should be changed use the property `border-color`.

```
.border{ border-color:#FFB2A8 }
```

If you want to add a box shadow in that color use:

Here you see how a box with a 4 pixel #FFB2A8 colored shadow looks like.

```
.boxshadow{ -moz-box-shadow:4px 4px 4px  
4px #FFB2A8; -webkit-box-shadow:4px 4px  
4px 4px #FFB2A8; box-shadow:4px 4px 4px  
4px #FFB2A8 }
```

Background

The CSS property to change the background color of an element to Hex FFB2A8 is called "background". The background property can be set on classes, ids or directly on the HTML element.

```
.background, #background, body{  
background:#FFB2A8 }
```

If only the background color should be changed can be used:

```
.background{ background-color:#FFB2A8 }
```

This example shows the color as background, it is applied via the CSS property "background".

To optimize and compress your CSS code, you can use our [online CSS compressor and optimizer](#) based on csstidy. If you want to create a linear or radial gradient as background or border, check our [CSS Gradient Generator](#).

Hey! You found this booklet interesting? Support Converting Colors with the new Membership Option!

The pro membership hides all ads, plus gives you double the colors in the color bucket, and more awesome pro features!

[Learn more, Memberships starting at \\$2.50/m!](#)

**Follow me
on Twitter!**

@ConvertingColor